

# The Valley and East Coast Voice

Vol. 25 No. 6 FRIDAY 10th JULY 1992

Established 1968

Price 50 cents

## Regional offices



Regional offices are located in a large number of urban and rural centres.

It is here that the majority of Social Security programs are administered and the daily contact with the public occurs.

The local regional office is the key area to contact regarding inquiries about the range of Social Security payments and services.

For locations of regional offices or for the location of regional offices where Aboriginal and Torres Strait liaison officers or interpreting services are available see Appendices (i) to (vi).

Social Security offices are open Monday to Friday.

### Contact with the regional office :

- **Telephone** - A person who lives in an area remote from the local office can reverse the charges on telephone calls to that office or they can make an STD call to the office and ask an officer to return the call.  
008 numbers are available at most regional offices. These calls are free.
- **Letter** - Reply paid envelopes are usually included with Social Security's correspondence when a written reply is required.  
They are also available at regional offices.
- **Personal contact** - It is not necessary to make an appointment before visiting an office, but if an appointment is made it ensures the appropriate officer will be available. Initial contact is with a counter assessor who can answer general inquiries and refer more specific ones to the appropriate officer or social worker.
- **Home visits** - A Social Security officer may visit a person at home if:
  - the person has difficulty in getting to a regional office because of illness, transport problems or physical difficulties;
  - the person prefers to see a social worker or welfare officer in the privacy and comfort of their home; or
  - a review of the person's claim is required.

All Social Security officers who visit people in their homes have a personal Social Security identity card with a photograph.

The officer should produce the card and introduce themselves.

If a person doubts the identity of a visitor, they should check with the local regional office before answering any questions or allowing access to their home.

- **Advisory services** - Many regional offices provide a regular visiting service to major outlying country centres in the region.

On these visits Social Security officers provide payment information, conduct interviews, receive claims and review forms.

Location and times of country visits are advertised in the local press and can be obtained by telephoning the regional office.

# CLASSIFIEDS

REDLINE COACHES....Deliver this paper quickly and efficiently. Statewide passenger and parcel service. Phone 722143.

FOR SALE....800 Chimney Bricks, 1 150 Everhot Combustion Stove. Phone 722479

PEAKES BUS SERVICE.....ST.MARYS..... BICHENO....SWANSEA....PASSENGERS..... PARCELS AND PAPERS. Phone 722390.

WOODHEATERS, OPEN FIREPLACES, CHIMNEY CLEANING. We specialise in ALL types of wood heaters....open fireplaces, chimney and flue cleaning. Ring for quotes 725531.

WORK WANTED BY EXPERIENCED HOME GARDENER OR MINOR JOBS. FREE QUOTES. PHONE 722629 after 5pm.

BABYSITTING AVAILABLE. Reliable and reasonable rates. Phone Theresa 722534.

## ST. MARYS NEWSAGENCY

open 7 days a week.

Come in and select a video from the wide range including:

COMEDY, ROMANCE,  
ADVENTURE, WESTERN  
AND  
CHILDRENS VIDEOS.

Also a great selection of stationery, toys and all the latest magazines.

FREIGHT DEPOT FOR T.R.C.  
PEAKES, HALEYS  
AND SUNCOAST.

## RICHARDS HOME FURNISHERS

FOR ALL YOUR HOME FURNISHINGS

67 CECILICA STREET, ST. HELENS  
PHONE 76 1147

IF YOU ARE LOOKING FOR SOMETHING BEAUTIFUL YOU WILL ENJOY BROWSING THROUGH OUR SHOWROOM.



- \* Vinyl
- \* Curtains
- \* Carpets
- \* Furniture
- \* Blinds
- \* Manchester
- \* Nursery
- \* Electrical

Quality and personal service assured

SUNSHINE LAUNDRETTE NEXT DOOR  
Open 7 days a week with service attendant.

### IAN HOLLINGSWORTH

REGISTERED DENTAL MECHANIC

WILL NEXT BE VISITING ST. MARYS ON:

FRIDAY 17th JULY

10.00 a.m. - 12 noon

for 7 day a week appointments

phone (003) 76 8253

36 Trelloggen Drive, Binalong Bay.

### FOR HIRE

EXERCISE BIKES, home gyms, treadmills, weights, rebounders  
Belt massager, rowers, climbers  
Free delivery coast to coast!  
FITNESS HIRE (003)281511

## RANSLEY'S APPLIANCES

SERVICING ST. HELENS TO BICHENO, INCLUDING ST. MARYS, FINGAL & SCAMANDER



FOR SALES & SERVICE OF NEW & RECONDITIONED DOMESTIC & COMMERCIAL APPLIANCES & ASSOCIATED EQUIPMENT.

(AUTHORISED SERVICE AGENTS)

FOR SIMPSON, KELVINATOR, WESTINGHOUSE, FRIGIDAIRE & CHIEF.

SHOWROOM & SERVICE CENTRE  
41 QUAIL STREET, ST. HELENS.  
PHONE: 76 1011.

# WHAT'S ON

FAMILY DAY CARE is home based care for small groups of young children. Care can be full-time, part-time or out of school hours.

Family Day Care workers are mature people who are experienced and enjoy working with children. They have been assessed and approved to provide child care in their own homes and are supported by Family Day Care staff.

Family Day Care is funded by the Commonwealth Government and meets the requirements of the State Department of Community Services. There are Family Day Carers in your area. For further information please phone (003) 271004.

The Red Cross Branch of St. Marys wishes to acknowledge the following donations to the Heart Start 3000 Appeal.

St. Marys Senior Citizens Silver Threads Club	\$100.00
Cornwall Golden Years Bowls Club	\$246.70
H.E.C. St. Marys	\$100.00
Mr Bill Connors	\$50.00
Malahide Golf Club	\$155.00
G.K. & K.J. Saunders	\$100.00
Mr W. (Bill) Nailor	\$10.00
Mr & Mrs Graeme Hayes	\$10.00
Mr Peter Hayes	\$10.00
Mrs Joan Gillies	\$10.00

## VAN DIEMAN PAVING



LEE ST. ROSSARDEN  
MANUFACTURERS & SUPPLIERS  
OF INTERLOCKING PAVING  
STONES.

NEW DESIGNS & COLOURS TO  
SELECT FROM, AVAILABLE IN  
60mm to 100mm THICKNESS  
VERY COMPETATIVELY PRICED  
DELIVERY AVAILABLE-  
STATEWIDE

## B. & J.A. SPILSBURY

### BROWNS GARAGE

37 Main Street, St. Marys 7215

BP Products and Mechanical Repairs  
Plumbing and Sewerage Supplies

Petrol, oils, lubes, tyres and plumbing filling,  
poly-pipe, brass filling, copper pipe,  
cleaners and glues.

Call in and see Bruce today.

B.H. (003) 72 2233

A.H. (003) 722155

Graeme & Betty Woodham	\$50.00
David & Melissa Quinn	\$5.00
Mrs Jean Faulkner	\$10.00

Geoff Carr  
Treasurer.

A CENT EVENING ..... In aid of the "St. Marys Community Swimming Pool Fund Raising Committee", will be held on Thursday 23rd July. At the St. Marys Fire Station. Commencing at 7.30pm.  
\$1.00 Entry Fee  
Lucky Door Prize. Please wrap your gift. EVERYBODY WELCOME.

### 2ND TERM PLAY GROUP

July 16th	Paper Mache Animals
23rd	Fun on a Stick
30th	Paint N Paper Mache & Humpty Dumpty
August 6th	Play Group Association Visit
13th	Body Tracing
20th	Sheep & Hand Puppets
27th	St. Helens?

### SCHOOL HOLIDAYS

EXTRA'S EACH WEEK INCLUDE, PLAY DOUGH, PAINT, DRAWINGS, TOYS.

St. Marys Play Group 10 to 11.30  
R.S.L. Hall Every Thursday.  
All Welcome.

### MEETING R.S.L. WOMENS AUXILIARY

Date of next meeting will be

FRIDAY 24th JULY

TIME 1.30pm

NOT JULY 27TH as stated before.

Trade table and raffle.

Reminder Groceries for hamper.

Polly McGee  
Hon Sec.

# CHURCH NEWS

◆ FINGAL-PORTLAND UNITING CHURCH

Parish Services:

Week	1	2	3	4	5
St Marys		11am	11am	11am	
Scamander	11am	9am	9am	9am	
		Kuca Club Monday 4.00pm			
Fingal	9am	9.30	9.30	9.30	
		Sunday School 9.30am			
St Helens	7pm	7pm	7pm	7pm	7pm

Parish Youth Group ring 725 139 or  
761 141  
All Welcome 725 139

◆ ANGLICAN PARISH OF FINGAL VALLEY

First Sunday of Month		
Fingal	8.45am	FS
St Marys	10.45am	MP
Avoca	6.00pm	HC
Second Sunday of Month		
Fingal	8.45am	HC
Avoca	10.45am	FS
St Marys	10.45am	FS
Cornwall	3.00pm	HC
Third Sunday of Month		
Fingal	8.45am	FS
St Marys	10.45am	HC
Mangana	3.00pm	HC
Avoca	6.00pm	HC
Fourth Sunday of Month		
Fingal	8.45am	HC
St Marys	10.45am	MP
Mathina	3.00pm	HC
Avoca	6.00pm	EP
Fifth Sunday of Month		
Fingal	8.45am	HC
St Marys	10.45am	HC
Avoca	6.00pm	HC
Rev'd David Le Roseignol Fingal		742113

◆ SEVENTH DAY ADVENTIST

Hodgman Street, Scamander  
Sabbath School 10 am. Divine Service 11 am.

FOR  
SINCERE DIGNIFIED PERSONAL  
SERVICE  
**DARAL BAILEY & SON**  
A F D A  
ANYWHERE ANYTIME  
ST HELENS 76 1153  
FUNERAL DIRECTORS

◆ SALVATION ARMY

Main Street St Marys (RSL Hall)

SERVICES:

<u>Sunday</u>	9.30 a m	Sunday School
	11.00 a m	Family Worship
	6.00 p m	Songs of Praise
<u>Tuesday</u>	10.30 a m	Ladies Fellowship
<u>Wednesday</u>	7.30 p m	Bible Study

EVERYBODY WELCOME!  
Aux-Captain & Mrs R Tolpult  
Phone (003) 722352  
THRIFT SHOP: Wed-Fri 10 a m - 2 p m.  
Pickups phone (003) 722 352

◆ CATHOLIC PARISH OF ST MARYS

FIRST SUNDAY OF THE MONTH		
St Helens	Sal. Vigil Mass	8.00pm
St Marys	Sunday Mass	9.00am
Fingal	Sunday Mass	10.30am
Bicheno	Sunday Mass	4.00pm
SECOND SUNDAY OF THE MONTH		
St Helens	Sal. Vigil Mass	8.00pm
St Marys	Sunday Mass	9.00am
Mangana	Eucharistic Serv	11.00am
Bicheno	Sunday Mass	4.00pm
THIRD SUNDAY OF THE MONTH		
St Helens	Sal. Vigil Mass	8.00pm
St Marys	Sunday Mass	9.00am
Fingal	Sunday Mass	10.30am
Bicheno	Sunday Mass	4.00pm
FOURTH SUNDAY OF THE MONTH		
St Helens	Sal. Vigil Mass	8.00pm
St Marys	Sunday Mass	9.00am
Bicheno	Sunday Mass	4.00pm
Swansea	Sunday Mass	6.00pm
FIFTH SUNDAY OF THE MONTH		
St Helens	Sal. Vigil Mass	8.00pm
St Marys	Sunday Mass	9.00am
Bicheno	Sunday Mass	4.00pm
PRIEST: PAUL CONNOLLY		
ST MARYS PHONE (003) 722 252		

◆ THE ANGLICAN PARISH OF ST HELENS

St Pauls Church

8.00am)	Every Sunday	
9.30pm)	Every Sunday	
7.00pm	1st, 3rd, & 5th Sundays	
Sunday School		Please see notice
3.30pm	Mondays	on page 6 for times
Pyengana		of The Anglican
11.15am	2nd Sunday	Parish of St. Helens
7.30pm	4th Wednesday	Home for Tea and
Falmouth		Falmouth Servie.
9.45am	1st & 3rd Sundays	
Scamander (Home for Tea)		
10.30am	4th Tuesday	

# SPORT

P. 5

## FOOTBALL

**JULY 4TH** Swansea travelled to St. Marys to play in very wet ground conditions.

The Under 16's resulted in a very easy victory for St. Marys, as indeed did the other two games. To their credit, all Swansea sides although outclassed, battled their respective games right to the finish.

**Under 16's Goalkickers:**

St. Marys: Radford 8, Lehner 6, Faulkner 3, Donald 3, Johnson, Morris, Brown 1.

A good team effort.

Final Scores: 25. 21 - 0.0.

**RESERVES:** St. Marys handled the conditions better than their opponents, to score easily 12.15 - 2.3.

Goals: St. Marys: D. Berwick 5, T. Mason 2, S. Aulich, Yeowart, Morton, Wines, Williams 1.

In a good team effort, S. Aulich, D. Berwick, D. Faulkner and M. Duniam were best.

Other details not available.

**SENIORS:** The home team, getting away to a good start and handling the ball extremely well, were far superior to their opponents.

Leading at half-time by 95 pts, 14.12 - 0.1, St. Marys kept up the pressure, to run out victors by 161 pts.

final Scores 25 19 - 1.2.

Swansea's only goal came at the 23 minute mark of the last quarter. St. Marys were best served by winning rucks S. Miller and J. Miles, wingers B. Leedham and S. Dakin. A great effort by Paul Mason. Superior forwards overall, winning in most positions. Six goals by Ray Squires and excellent effort.

**SWANSEA: BEST:** P. Cusick tried hard all day. T. Stone, A. Wallace, W. Kean, M. Randall, S. Graham.

**GOALS: ST. MARYS:** R. Squires 6, A. Viney 4, J. Miles 3, R. Salter, M. Viney, S. Grant 2, B. Leedham, S. Gray, A. House, J. Viney, M. Williams 1.

**SWANSEA:** S. Graham 1.

## ST. MARYS HEALTH & BEAUTY CENTRE

42 Main Road, St. Marys, Tasmania  
Phone (003) 722172 A.H. (003) 722210

*John and Kathryn Brown*

COME AND SEE OUR NEW RANGE OF DECORATED BEARS. Eg. GRANDMA & GRANDPA BEAR, MARKET DAY BEAR, SCARLET O'HARA BEAR & MANY MORE.

PROTEC SHAMPOO & CONDITIONER: EXTENDED RANGE INCLUDING EXTRA BODY, PERMED & COLOURED AND DRY AND DAMAGED . \$2.00 ea.

PROTEC TWIN PACK @ \$5.95 NOW BACK IN STOCK.

8 PENTAX CAMERAS NOW ON DISPLAY

LIPSTICK SPECIAL @ \$3.50ea.

GIVENCHY SHEER PANTYHOSE \$6.00pr

## ST. MARYS HOTEL

Phone 722 181

Cold Beer - Counter Meals

and all your  
Bottle Supplies

DINING ROOM available  
for special parties

### PUB 8 BALL

After a couple of defeats we are looking for a win against the VETS at home on 10th July. All spectators welcome. Commences at 8pm.

### FORTHCOMING ENTERTAINMENT

Saturday 25th July

"DENIM and LACE"

Continued.....

### CAMP QUALITY

THANK YOU TO THE MANY HELPERS

The children, companions and staff of Camp Quality are once again, very grateful to the many helpers who assisted at our recent camp.

The work done by many members of this community in helping prepare meals and in cleaning afterwards and those that supplied those yummy home made cakes and biscuits add that little touch to any camp and ensure that the time spent with the children is maximised.

"Fawltly Towers" is a wonderful campsite and the contribution from this community ensures these special children have a great time.

Sincerely,  
Peter Crosswell  
Camp Director.

### St.Marys R.S.L. Sub-Branch

Veterans Affairs representative will be at St.Marys R.S.L. Institute July 15th.

Time 11.45am - 1.00pm

If you require advise on Veterans Affairs.

Contact Jack McGee for appointment.  
Phone 722129.

J. McGee  
Hon. Sec.

ST.MARYS TENNIS CLUB.....NEXT MEETING, WEDNESDAY 22nd JULY 7.30pm

### THE ANGLICAN PARISH OF ST HELENS

#### ST PAULS CHURCH

8.00 am)

9.30 am)

7.00 pm

Every Sunday

Every Sunday

1st, 3rd & 5th Sundays

#### SUNDAY SCHOOL

3.30 pm

Mondays

#### PYENGANA

11.15 am

2nd Sunday

7.30 pm

4th Wednesday

#### FALMOUTH

11.15 am

3rd Sundays

#### SCAMANDER (Home for Tea)

9.30 am

2nd Sunday

10.30 am

4th Tuesday

## ST MARYS BUTCHERY

MAIN ROAD ST MARYS

TOP QUALITY

HOME MADE SMALLGOODS

PORK - BEEF AND CHICKEN  
SCHNITZELS

FREE HOME DELIVERY ON FRIDAY

PHONE 722 274

GARAGE SALE.....Sunday 12th July at 10.30am till 5.30pm Newman's - 10 Cameron St St.Marys.

Street Stall.....In aid of Catholic Church at 10am on 28th August.

## EAST COAST GLASS

FOR PROMPT RELIABLE SERVICE CALL 725361  
DAVID CANNON

FOR: GLAZING- GLASS REPAIRS  
MIRRORS  
FLY SCREENS - DOORS  
SHOWER SCREENS  
BLINDS & AWNINGS

COMPETITIVE RATES PH 725361

WE SERVE THE WHOLE EAST COAST AND THE FINGAL VALLEY



### RETENTION RATES IN COUNTRY AREAS:

Recent comments to the media ("The Examiner" 3/7/92) mentioned that more country students will leave after Grade 10 than their urban counterparts because the students have less access to experienced teachers.

It was claimed that fewer Advanced Skills Teachers in country schools is a major cause of lower retention rates and examples were given of country high schools with percentages of staff at AST1 level ranging from 17% to 28%.

While it could be a contributing factor in some schools, to ignore the significant influence of a number of other factors such as cost and the distance from urban centres is quite unfair.

Sweeping statements contribute to an undermining in community confidence in schools and can adversely affect staff morale.

It should be recognised that this school has a very experienced staff with well in excess of 50% of teachers being classified at AST1 status and above. This is a percentage comparable with city schools. These skilled teachers are supported by numerous young enthusiastic teachers and experienced part-time teachers who are dedicated to providing a high quality of education for our students.

### "ABC of Breastfeeding"

A discussion will be held next Wednesday, the 15th of July at Debbie Searle's home, Gray Road, St Marys at 1.30pm. All expected mothers and mothers welcome.

For more information ph. 722573

These heart-warming stories were written by students from 8 B

### MY LIFE AS A RED BLOOD CELL

First, I slip my way out of your big, long bones and start my race around your body. My average lap is about 15 seconds from your love symbol through all parts of your body and back. My race-course is the Plasma Race Way. I fuel up at the lungs with uncontaminated oxygen and by the time I get to the capillaries I am low in oxygen. I go slowly up the vein, come back to your love symbol and refuel at your lungs ready for the trip around your body. Sometimes an artery straight might break and I come squirting out of your body because the racers are bumper to bumper. If I don't die during one of those crashes, I will die anyway 120 days after I started racing. I retire because I get dizzy going around your twisted body 5,760 times each day.

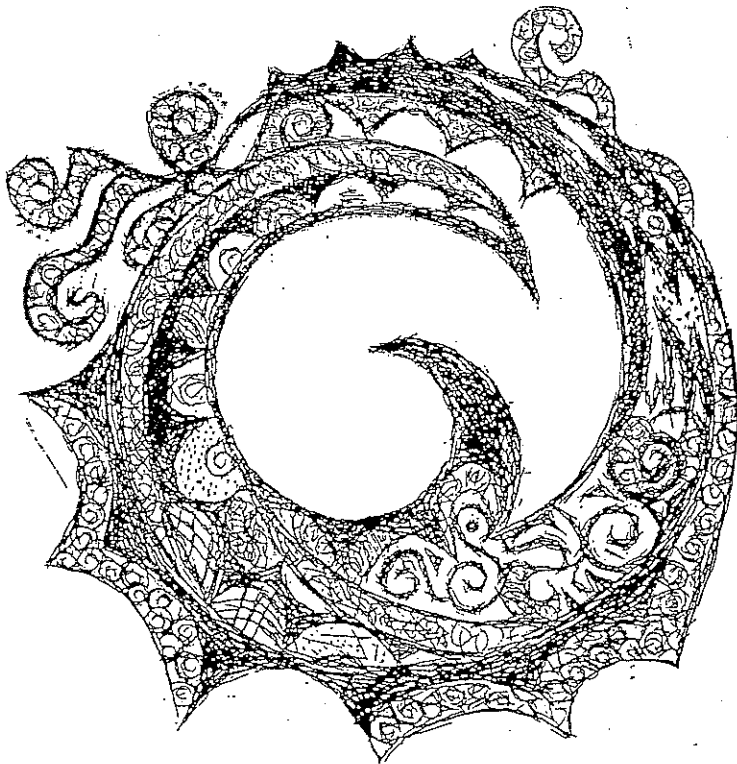
Timothy Youd  
Grade 8

MY LIFE AS A RED BLOOD CELL.

ETCHING BY ANNA SANTOS GRADE 9

The etching symbolises surfing; the waves, sun and the beach.

Anna first scratched the design onto clean plastic. Ink was then applied to the design before printing through an etching press.



I've been a red blood cell all my life, and I have a life span of about 120 days. I am carried around the plasma with five million others per cubic millimetre of blood. My shape is just like a doughnut and I travel all around. I contain a red protein called haemoglobin. I have no name but I call myself a red blood cell. I am manufactured in the bone marrow and the most important thing that I do is to transport oxygen. I'm usually red but when I carry carbon-dioxide I turn blue. I'm not the only red blood cell. There are millions of tiny others that do exactly the same thing as I do. We are all part of the same thing which is blood and we carry the oxygen to every part of the body.

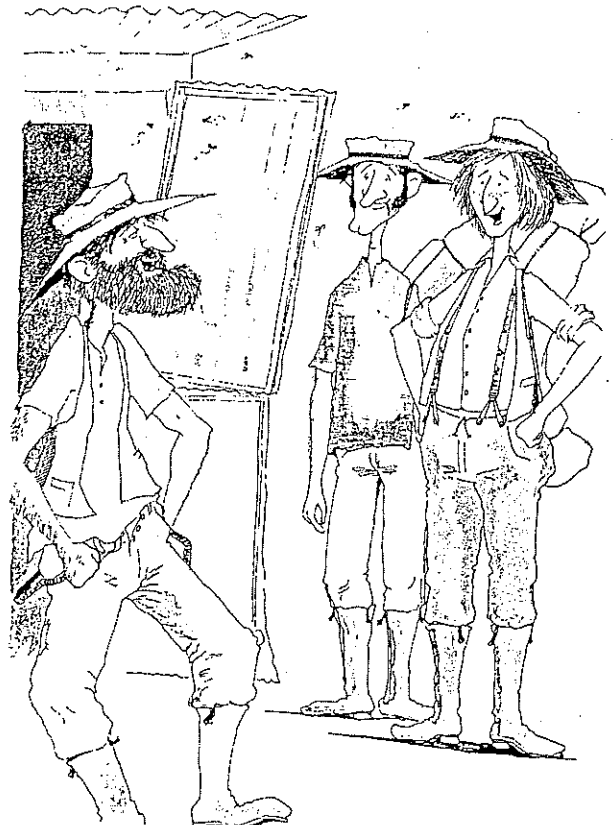
Kelly Blackberry  
Grade 8

THE COCKY OF BUNGAREE:

Rehearsals have commenced for our Term 111 drama production, "The Cocky of Bungaree".

The play is set in the early years of this century and tells the story of Flash Jacqui, a female sheep shearer, and the smartest sheep you could ever hope to be introduced to.

It is a light hearted comedy-melodrama of confused calamities, dastardly deeds and devious behaviour topped off with lively Australian country music.



AUSTRALIAN RED CROSS SOCIETY  
ST. MARYS BRANCH  
ANNUAL REPORT 1991-92

The past financial year 91-92 has been another successful year. With the support of everyone concerned, in particular the volunteer officers of the ambulances and H.A.C.C. vehicles these services are operating smoothly and effectively.

This past year, a more active roll has been pursued by the ambulance volunteers both as drivers and attendants. Those officers who work as attendants have done a Volunteer Ambulance Officers Course which allows them to treat and care for patients in a professional manner. A very special thank you to Sister Di Field, for her help and support, her contribution and advice to the ambulance service is greatly appreciated and I hope that this help and advice will continue.

To the Director of Nursing, Alison Smith, St. Marys Hospital, the Sisters and Nursing Staff, our thanks for their assistance and support as well.

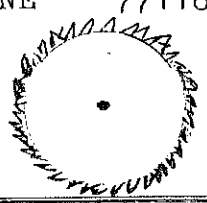
The Ambulance Service has attended 149 cases this year, some of these cases involved both vehicles at the same time, and at other times one ambulance has gone out on a call, and the second vehicle has been called out to attend a separate case 10-15 minutes later.

In early March an Appeal for Donations was launched to raise at least \$5,000 or more for a "HEART START 3000" machine to maximise the response ability of the ambulance service, as at this evening \$4,865 has been raised by individuals, organisations, and businesses of the Municipality, and we are aware that other donations will be forthcoming shortly, all of which will enable this vehicle piece of equipment to be purchased at a cost of approximately \$10,000.

**MATHINNA      SAWMILL**

SCANTLING, RAILS, PALING.  
TIMBER CUT TO ORDER  
CALL US, WE ARRANGE FREE  
DELIVERY AND PROMPT SERVICE

NO ORDER TO SMALL  
PHONE      771189.



Not to be outdone, to all those collectors in all areas of the District who went round for the "Doorknock Appeal", the St. Marys Red Cross Branch extends very special thank you for a marvellous effort which resulted in an amount of \$4,012 being raised as well, this is excellent support from the Community for the Ambulance Service in the Fingal Municipality. A pleasing item to note was the participation in this Doorknock of a number of the younger members of the community.

The other valuable though quiet service in the district - is the H.A.C.C. vehicle, also manned by volunteers, a tremendous vote of thanks to these people, in particular, Mr Jack Bullock for his hard work in keeping the volunteers advised of what they have to do, and the operation running smoothly.

My thanks to the Branch Members for their support in keeping the Red Cross Branch alive in the community, and to Mrs Doris Bullock as Acting President this year for a job well done.

Meetings of the Branch are held bi-monthly on the first Monday night of the month. We hope that new members will join the Branch and keep this valuable community service ticking over.

Neville Peake,  
Secretary.

Gold was found in this vein, but only such a small extent was operated on before the experiment was discontinued, that no judgement can be consistently pronounced as to the auriferous quality of the quartz, which is decidedly gold bearing.

About fifteen months back, an effort was made to revive the work; but not withstanding the extraction of gold at a nearly remunerative rate, it was again abandoned. The value of the gold produced from this locality is by the assay at the Sydney mint determined to be two or three shillings per ounce more than that of the Mangana gold field.

The ascent of Ben Lomond is not difficult; the approach can be made from Kingston on the Ben Lomond Rivulet, the property of Mr. John Bomford, some few miles from Avoca. The road throughout the whole distance forming a very picturesque ride, crossing the "saddle" at the back of Bona Vista, and passing through Bowary's Plains, whence you command a fine view of the mountain frowning in front. The traveller should then make for Mr. Rigney's cattle station, where he will find the hut of the man in charge situated immediately under the abrupt termination of the "Butts".

Sydney and his wife will accord to the visitor (who cannot place himself under a more able and judicious guide and conductor) a very agreeable welcome. The ascent is made from this point by bearing to the left somewhat at first, to pass to the west of the Butts when you rise along a ridge, not of very steep character, running parallel to the western slope of the mountain which, as you ascend opens out in fine, bold and abrupt rocks to the right, and hanging almost, as it were, overhead.

In this way, you proceed until you reach to within 500 feet of the summit, and you pass the region of trees, when the ascent becomes steep and sharp for about 300 feet or more; from this the course bears away to the right, and you soon find yourself at the summit, which you reach at the back of what is called the Stacks.

To be cont'd.

# CHEAP PETROL

# AVOCA

## FOUR SQUARE STORE

48 KM WEST ON THE ESK HIGHWAY  
FROM ST MARYS OR 24 KM EAST FROM  
THE CONARA TURN OFF - FOR ALL  
YOUR FOUR SQUARE WEEKLY SPECIALS.

ICECREAM CORDIALS SWEETS  
SALAD ROLLS TEA & COFFEE  
ALWAYS AVAILABLE

WE ALSO STOCK CAMPBELLTOWN PIES &  
PASTIES. CALL IN AND FILL UP  
WITH CHEAP PETROL AND GET MORE  
KILOMETRES FOR YOUR DOLLAR. WE  
HAVE A LARGE STOCK OF NEWSPAPERS  
AND PERIODICALS.

- \* HOT BREAD KITCHEN
- \* DELI WITH A DIFFERENCE
- \* TAKEAWAYS (NOT THE USUAL)

### DINE IN OR OUT

OPEN SEVEN DAYS A WEEK FROM

7.30 AM TILL LATE WEEKDAYS

AND

9.00 AM TILL LATE SUNDAYS

FOR YOUR CONVENIENCE

WHY NOT CALL IN AND SEE STEVE OR  
ANNE AT THE AVOCA FOUR SQUARE

PHONE 842123

# SPORT

## ST. MARYS GOLF NOTES

by Tee Up's Mate

As reported in the last Valley Voice, St. Marys pennant team has gone on to win the NEDGA A Grade pennant for 1992. The sixth flag in the past seven years. The last game saw an exciting  $4\frac{1}{2}$ - $4\frac{1}{2}$  draw with Bicheno at Bicheno, as nothing could be gained to either side the deciding match did not need to be played out. Congratulations to "Gracie" Dale on the job he did this season as captain and it is hoped that this team can prosper further in the next two months. Even possibly to a State Div 3 title.

Congratulations to Chris Davern in going through the season undefeated, a rare thing these days, especially playing well up the order like he did, keep it going Chris. Other A Grade players during the year were, Steven Dawson, Graham Dale, Kim Howe, Drew Berwick, Craig

Mitchell, John Newman, Shan Wilmot, Kerry Davern, Derek Summers, Barry LeFevre and Rod McGiveron. Some having more wins than others, but all contributing to the final result. Well done team. In Reserve Grade, although the team wasn't successful, there was still a great contribution made by all the participants, and never ever gave up trying, week in and week out.

Look out for them next season because they are a determined bunch. Reserve grade players were, if not named above: Jim Haas, Tony Blake, Tom Hardy, Leo Cook, Todd Summers, Geoff King and Tyrone Oliver who incidentally won his first game in fine style at Bicheno.

A very big congratulations to the Malahide Reserve team in taking out this years flag in grand style. This team is a credit to their club and quite a few of their players are young and will definitely form the nucleus of a very strong A Grade team within the next few

seasons. It's been a long time between flags for Malahide but to all the club, you are on the right track and keep it going. There have been expressions from all around the district this season to keep expanding our association over the future and if each club can continue to improve, it will benefit all and keep the NEDGA as competitive as it has been over the past two or three years. The wind up of the pennant season is this Sunday July 12th with the Memorial Shield and Pennant presentations at Malahide Golf Club, starting at 10.00am. So we hope to see as many St. Marys players as possible available.

Continued on Page 13



## Pensioners, Veterans, Concession and Safety Net Card Holders



From 1 July 1992, to receive your lower-priced or free medicine, you must show the pharmacist your concession or entitlement card before you get a prescription filled.

This requirement will apply to holders of a Pharmaceutical Safety Net card, a Veterans' Affairs Treatment Entitlement card or a card issued by the Department of Social Security.

If you do not show your current entitlement card, you may have to pay a higher price for your medicine.

If you are asked to pay a higher price for your medicine, ask your pharmacist for a receipt and a claim form, attach the receipt to the claim form and lodge your claim for a refund from your Medicare Office or mail your claim to the Health Insurance Commission at the address on the form.

If you have any general questions about your entitlement, ring the Pharmaceutical Benefits Scheme Information Line on 008 020 613.

PRS

## INDOOR HOCKEY

### Round 14

If you thought that the No 1 seed being bundled out of Wimbledon was the upset of the week, then you weren't at the indoor hockey on Tuesday! In what must surely rate as the biggest shock since I last tried to get a crumpet out of the toaster with a piece of fencing wire, Reef Raiders were given a hockey lesson by none other than the Golden Oldies, to the tune of 7 goals to nil. Goldies have been threatening a performance like this for several weeks. They are certainly playing well at the right end of the season although they have left their run too late as far as the top five is concerned. For the Bicheno Beachcombers, the loss could not have come at a worse time as the scramble for the top three spots and the double chance intensifies. The game was a 'spirited' encounter but it was good to see handshakes all round at the end!

Alternatives stamped their authority on the top spot by defeating Coasters 4-0. The Alternators are certainly winning the hard games at the moment.

Adders accounted for Panthers 9-3 and with Mary-Ann Mitchell being picked up in the mid-season draft, they have a better balanced side. In other results, Meanies cleaned up Avoca 15-2 and Phantoms defeated Fingal 5-1

### Round 15

Goldies were brought back down to earth this week by Coasters, 6-2. Raiders returned to the winning list by defeating Meanies 4-1. Relief all round for Raiders goalie Nic Wardlaw who must have thought he was wearing sieves instead of pads after the previous few weeks. Fingal beat Panthers 6-3. Alternatives continued their recent good form with an 8-4 win over Adders. Phantoms won on forfeit to Avoca, half of the Avoca team being confined to barracks due to flooding.

### Ladder after round 15

	Pt	%
Alternatives	24	251
Phantoms	22	243
Coasters	22	212
Raiders	21	179
Adders	20	130
Goldies	11	79
Fingal	9	63
Meanies	8	69
Avoca	7	34
Panthers	6	37

### Short Corner

FOR SALE

### ELECTROLUX FLOOR POLISHER

Good condition

\$20.00

Phone 722 281

### PROFESSIONAL PAINTER AND DECORATOR.

ANDREW G. JOHNS

Talbot St.  
Fingal

Phone  
742253  
B/H & A/H

INTERIOR AND EXTERIOR  
PAINTING

PAPER HANGING

OBLIGATION FREE QUOTE

### Eddy, Haworth Chartered Accountants

For fast, friendly preparation  
and assessment of 1992  
Income Tax Returns, contact:

Visiting  
St. Marys  
EVERY  
Friday

### St. Marys Health and Beauty,

Main Street, St. Marys

for appointments, or

Phone: **72 2172**

## SPORTS CONTINUED....

A final note to Mary and Geoff King for all their help with the team during the year, and to all our afternoon tea ladies, you have done the team proud. THANKS one and all.

Club golf has seen the Red Cross Fundraising Day, the first round of the Spilsbury Trophy, Associates Brooch, Associates Captain v Secretary's Matchplay just to name some events.

On Red Cross Day \$250 was raised toward the new Heart Machine and it proved to be a most successful day. A big thanks to Di Field for helping to organise the day and to all those who helped out, especially for supplying food and doing bar duty. Being a Mixed Canadian and Mens Canadian Foursomes event made it very popular.

Associates Brooch was won by Carole Furlow and we believe it is her first Wednesday win, Well Done to you Carol.

In the Spilsbury Trophy the first round honours went to Derek Summers with a very solid nett 63 and 73 off the stick including five birdies with one round to go, there will be a full field to contest this great event. The Red Cross winners included: Robin & Jason Costain, Damon Viney, Lee-anne King, Tyrone Oliver, Bobby Harwood, Geoff & Mary King and Derek Summers- M. Duniam, Larry & Buffy Stingle and smoke alarm raffle to Betty & Steven Dawson.

Continued on Page 14

## Recipe

### GINGER CHOCOLATE

375g of Chocolate (melting chocolate only)  
250g Crystallised Ginger (cut into small pieces)

Melt chocolate in double boiler.  
Mix in ginger and spread in flat tin.

Cut into small squares when cool.  
Not suitable to do in microwave.

## Sam's cut price



THIS SECTION OF OUR PAPER  
IS SPONSORED BY  
GRAEME AND BETTY WOODHAM

\*\*\*\*\*

BLACK AND GOLD PRODUCTS  
ARE AVAILABLE AS WELL AS  
OUR NORMAL STOCK

\*\*\*\*\*

FULL RANGE OF STOCK FEED  
WE NOW HAVE IN STOCK, A  
RANGE OF FENCING PRODUCTS,  
INCLUDING PLAIN WIRE, BARB,  
STEEL POSTS, ETC. IF WE  
DO NOT HAVE IT, WE CAN GET  
IT! SO PLEASE ASK.

\*\*\*\*\*

THANKYOU TO EVERYONE FOR  
ATTENDING THE ST MARYS  
NETBALL CLUB FUN DAY.

AMOUNT RAISED: \$311.00

FINAL GAME WAS WON BY

ST MARYS FOOTBALL CLUB  
TEAM NO. 1, DEFEATING  
SCAMANDER, 12 - 3.

### RAFFLE WINNERS:

1ST PRIZE: GROCERIES, PAULA COOK

2ND PRIZE: CLOWN, NARELLE BETTS

THANKS TO ALL DONORS, IT  
WAS A VERY ENJOYABLE DAY.

\*\*\*\*\*

ST MARYS FOOTBALL CLUB  
CABARET  
SCAMANDER SPORTING COMPLEX  
SATURDAY, JULY 18, 1992  
WITH SINGING STAR

TRUDY FRANKLIN

MAKING HER DEBUT  
WITH THE BAND

"CACTUS"

\$5.00 COVER CHARGE

\*\*\*\*\*

SPORTS CONT....

GOLF NOTES

RESULTS

MEMBERS

Pennant v Bicheno at Bicheno  
St. Marys 4½ dw Bicheno 4½

1. S. Dawson 2/1 d S. Huddlestone
2. K. Howe 1+ A. Longden 1up
3. C. Mitchell 1 up d M. Shepherd
4. C. Davern 2 up d L. Giffard
5. D. Berwick 1+ J. McDonald 1 up
6. S. Wilmot sq with R. Tarr
7. J. Newman 1+ C. Lyne 2/1
8. K. Davern 1+ S. Lockhart 2/1
9. G. Dale 4/3 d N. Tildesley

RESERVE GRADE

ST. MARYS 1 lost to BICHENO 4

1. B. LeFevre 1+ P. Singline 4/3
2. L. Cook 1+ J. Colrain 7/5
3. T. Hardy 1+ L. Wallace 7/5
4. J. Haas 1+ D. Williams 3/1
5. T. Oliver 5/3 d S. Fahey

ASSOCIATES BROOCH

C. Furlow 66 nett  
 M. Nolan 70 nett  
 K. Blair 73 nett  
 Nearest Pin 7th N. Mallinson

ASSOCIATES CAPT V SECRETARY

Captains Team def Secretary's  
 Team 4½ to 2½

RED CROSS FUNDRAISING DAY

CANADIAN FOURSOMES

R. Costain - J. Costain (15½) 60½  
 L. King - D. Viney (15) 62  
 B. Harwood - T. Oliver (28) 62  
 N. Mallinson - K. Howe (17) 63  
 C & J Furlow (28½) 65½

Nearest Pins 5th - D. Summers  
 M. Duniam  
 7th - B & L Stingle

Raffle Winners Petrol - G & M King  
 Smoke Alarm - B & S Dawson

1ST ROUND MEMBERS SPILSBURY

TROPHY

D. Summers (10) 63  
 R. McGiveron (10) 65  
 N. Cumming (11) 66  
 T. Hardy (20) 66  
 R. Costain (16) 67

GROSS

D. Summers 73  
 R. McGiveron 75  
 N. Cumming 77

ST MARYS

SECOND HAND

STORY STREET

MONDAY TO FRIDAY 8.30am - 6pm

BRIC. - A - BRAC

SECOND HAND GOODS

BOOK EXCHANGE

VIDEO HIRE

CLOTHING

BUY GOOD CLEAN SECOND HAND  
 ITEMS SUITABLE FOR RESALE  
 OR WILL SELL ON COMMISSION.

GRAEME S. SMYLLIE  
 LICENCED SECOND HAND DEALER

Nearest Pin 4th- D. Summers  
 7th- L. Rattray  
 R. Costain  
 (joint winners)

MEMBERS STROKE

C. Davern (8) 65  
 c/b T. Oliver (21) 65  
 N. Cumming (11) 66  
 L. Cook (15) 67

GROSS

C. Davern 73  
 D. Berwick 76  
 N. Cumming 77  
 Nearest Pin 7th - D. Berwick

**THANKYOU**

We would like to say thank you to our family, relatives and friends for their phone calls, cards, flowers, personal greetings and attendance at the celebration on Saturday and Mass on Sunday for the occasion of our Golden Wedding Anniversary. Thank you Stephen and Father Paul for your inspiring words and Roslyn and Chester for reliving some of our past. To our loyal helpers a big thank you. It was a night we will long remember.

Keith & Doris

Jesus told many Parables, to His followers, in His teaching. A parable is an earthly story of every day happenings, with a spiritual or heavenly meaning attached to it.

In this story of the prodigal son He wants us to see the Fatherly love and the difference between His two children.

There were two young men reared on a farm. One day the younger man said, "Dad I'm not happy here. I don't like farm work. Give me my portion of inheritance and let me go and find work for myself." I don't know how the father felt deep down about this, but in his deep love for his son, he consented to give him his share.

Not many days later the young man left home for a far country. There he spent his money in rash, riotous living. He found many friends. An old proverb says, "Friends are plenty when the purse is full." And another corresponding proverb says, "A wrinkled purse, a wrinkled face."

The Bible says not many days passed when there was a mighty famine in the land. The young man found he needed help—his money was gone, and so were his friends! No-one gave anything to him.

At last a man sent him into his field to feed pigs. We don't know how long the young man was doing this work, but he was so hungry he munched up old acorns that the pigs were eating.

Then one day he sat down and looked back on his life. He could see where he had drifted to and where he had come from.

Jesus said the young man came to himself. He thought about the servants back home with plenty of food. "Here I am perishing with hunger. I will go back home and ask my father if I can be one of his hired servants."

It was a long journey home. On the way he was thinking about what he would say to his father, fully conscious of the sinful life he had led. "I will say to him, 'Father, I have sinned against you and I am not fit to be called your son anymore. Will you make me one of your hired servants?'"

But what had been happening back home during his absence? His father had been looking down the road where the young man had gone—longing and praying for him to come home again. I feel he looked many times each day.

Cont. next issue

## W LOCKETT & SONS

FUNERAL DIRECTORS  
CAMPBELL TOWN

Enquiries may be directed through:

Mr D Casboul  
St Marys 722 383

or

Mr T Pears  
Campbell Town 811 167

SOUP & SANDWICH LUNCHEON and MORNING TEA will be held at Holy Trinity Church on July 21 at 11.30am. Orders for the soup & sandwich may be given to Mrs Pam Lynch or Mrs Una Camplin.

ANNUAL MEETING for St Marys Anglican Church to be held after a shortened service on July 26.

THE ST MARYS PLAY GROUP wishes to thank the Lions Club of St Marys Inc for the donation enabling us to purchase a slide for the Play Group Children to use.

PLAYGROUP - THURSDAYS 10.00am - 11.00am - RSL HALL...ALL WELCOME

### LETTERS TO THE EDITOR

Dear Sir,

#### SALES TAX SIMPLIFICATION

I trust that the Australian Taxation Office does a better job of recently announced plans to simplify the present cumbersome income tax laws than it has done with the proposed sales tax simplification.

The new sales tax simplification will widen the tax base, implement draconian anti-avoidance provisions and cast into doubt previous rulings.

The income tax legislation is in urgent need of simplification as it has grown from 126 pages in 1936 to over 5,000 pages of complex, technical law today, but it must be done co-operatively with representatives of industry.

Consultation on the sales tax simplification has not occurred as widely as with some other taxation reforms resulting in the present problems and need for a Senate Select Committee to review many of the proposals.

JOHN WATSON  
Senator for Tasmania

#### URGENT

WANTED: AGISTMENT FOR 7 QUIET HORSES AND TWO JERSEY HOUSECOWS. RING: 722602 ALSO.... GARAGE SALE: SATURDAY 19, 9.00AM MICHAEL ST., CORNWALL.

# STARDUST

**CANCER** June 22 - July 23

This will be a week of achievement and self-esteem. Expect to start a new job or project that eventually brings rewards.  
Lucky numbers; 7,21,31.

**LEO** July 24 - Aug 23

Much energy will be expended around the home. Avoid family disputes in your desire to dominate the domestic scene. You may receive a sudden financial gain. Lucky numbers; 36,39,4

**VIRGO** Aug 24 - Sept 23

Personal and business relationships will benefit you in unexpected ways this week. A close friend may be especially helpful.  
Lucky numbers; 24,25,29.

**LIBRA** Sept 24 - Oct 23

This is a good time for important discussions or any task requiring clear thinking and reason. Travel or long distance communication will please you. Lucky numbers; 12,15,28.

**SCORPIO** Oct 24 - Nov 22

You have a fabulous week ahead, when everything comes together. Sport or recreation will engage most of your spare time.  
Lucky numbers; 8,17,38.

**SAGITTARIUS** Nov 23 - Dec 21

All should go well this week, and luck will be on your side in personal and business matters. A new job or personal project will give you much pleasure. Lucky numbers; 3,4,37.

**CAPRICORN** Dec 22 - Jan 20

Some can expect conflict over legacies, taxes and joint finances. You will encounter someone who will have a powerful effect on you.  
Lucky numbers; 10,27,32.

**AQUARIUS** Jan 21 - Feb 19

All sorts of ideas will come to you this week for improving efficiency at work and at home. Short journeys may be necessary.  
Lucky numbers; 1,6,26.

**PISCES** Feb 20 - Mar 20

Now is a good time for contracts, negotiations and business discussions. Domestic conditions can now be improved.  
Lucky numbers; 9,20,33.

**ARIES** Mar 21 - Apr 20

There could be some conflict between your personal and professional activities this week. You may receive unexpected news.  
Lucky numbers; 11,14,18.

**TAURUS** Apr 21 - May 21

You may feel yourself being pulled in two directions this week, and compromising may be hard. Reach out into new areas; they will be challenging. Lucky numbers; 16,22,23

**GEMINI** May 22 - June 21

This is a good time to be in the spotlight, as your popularity is running high. You will be full of energy; health is good.  
Lucky numbers; 5,30,45.

## MEALS ON WHEELS

### JULY

SUNDAY 12  
MONDAY 13  
TUESDAY 14  
WEDNESDAY 15  
THURSDAY 16

### ST. MARYS

Yvonne Saunders  
P & Y Davern  
Mary Viney  
George Oliver  
Shirley Britton

### FINGAL

Janine Burt  
Carole Woods  
Pat Death  
Vicki Woods  
Jill Miller

### MATHINNA

Kaye Turner  
Tom Baker  
Max Ellis  
Cynthia Webb  
Christine Scott

SUNDAY 19  
MONDAY 20  
TUESDAY 21  
WEDNESDAY 22  
THURSDAY 23

Clive Berwick  
Lorraine Gill  
Wendy Aulich  
Jenny Stewart  
Yvonne Salter

Les Rubenach  
Christine Woods  
Margie Williams  
Vicki Miller  
Julie-Anne Claridge

Kaye Turner  
Tom Baker  
Max Ellis  
Cynthia Webb  
Christine Scott

## ST. MARYS SHOE STORE

Stockists of:

- \* fashion shoes
- \* gumboots
- \* blundstone work boots
- \* all shoe care products

St. Marys.

Phone: 72 2396

UNTILL JULY 31<sup>TH</sup>

ALL STOCK REDUCED BY 20%

"CASH SALES ONLY"