

The Valley & East Coast Voice

 Celebrating St Marys Sesquicentennial Year 

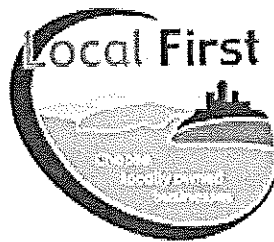
Volume 40 No 12

Thursday October 25, 2007

Est. 1968

50 cents

Keep the Money in St Marys Shop Locally



- * Recirculate more dollars
in our community
- * Support, strengthen and
build more local jobs
- * Preserve and enhance our
unique town

THINK LOCAL FIRST

SESQUICENTENNIAL GREAT BICYCLE RIDE NORTHERN VETERAN'S CYCLE CLUB INVITATION ONLY

SUNDAY OCTOBER 28TH, 2007. 10.30AM
STARTS AT GREY MARES TAIL, CONTINUING ON
TO FINGAL AND RETURN, FINISHING AT THE
ST MARYS RAILWAY STATION.
GRASSY BOTTOM REGIONAL ARTS WILL BE
HOLDING A MARKET AT THE
RAILWAY STATION.
PRESENTATIONS AT
ST MARYS HOTEL AT NOON.
More info 6372 2094

DON'T FORGET! MAYPOLE DAY

SATURDAY NOVEMBER 3RD
10AM—6PM FAULKNER'S GREEN
*LIVE MUSIC * DANCE * BIG PUPPETS
*CLOWNS*KIDS TENT * BABY ANIMALS
* FACE PAINTING *COMPETITIONS* CAKE BAKE
JUNIOR SCULPTURE FOOD & DRINKS
AFTERNOON TEA
* ENTERTAINMENTS AND DEMONSTRATIONS.

MORE INFO? VISIT: www.storystreet.com.au

Please note: Deadline for articles to be included in the next Valley Voice is: 5 pm Tuesday, November 6, 2007.
New email address: judith.spilsbury@bigpond.com

Community news

St Marys Hospital Auxiliary

meets the first Monday of every month at 2pm at the St Marys Community Health Centre.

The Break O'Day Woodcraft Guild Inc. meets the last Saturday of the month at 4pm at the goods shed behind the St Marys Railway Station.

Grassy Bottom Regional Arts are holding General meetings on the first Tuesday of every month at 2 Story St, St Marys at 6pm. Come along to share your creative ideas and help Grassy Bottom maintain an artistic culture in our community.

The **Tasmanian Lymphoedema Centre Inc.**, holds meetings every 3rd Monday of the month at 10 am at the St Marys Community Health Centre.

St Marys Ladies Midweek Tennis 9.30am each wed. Need new players - of any standard-beginners welcome-childminding included - lovely safe place to bring toddlers while you play. **Ring Annette-6372 2224**

St Marys Playgroup meets each Friday 10ish at the kindergarten. All preschool aged kids welcome to bring a carer/parent/granny/pa for a play and morning tea. Very chilled relaxed group of all ages - we love new members. **Contact Jane 6372 5060**

WOMBAT WALK WEEDERS meets every Wednesday 9am to 12 Noon (weather permitting) at St Marys Musical Playground area to plant and maintain the rivulet park and flower bank - anyone interested in joining us - please come along and meet our group.

Contact - Robina 63722022

Break O'Day Wine & Food Appreciation Society meets once a month on the last Sunday. Next meeting, Sunday October 28th at the Paddle Wheeler Restaurant, St Helens. **Ph: Jan 6376 1661 or Leanne Ph: 6372 5291.**

MARKET DAY

FINGAL TAKEAWAY CARPARK

NOVEMBER 5TH

9AM—2PM

STALL HOLDERS WELCOME. \$10 PER STALL

FOR MORE INFO PLEASE CALL FINGAL 6374 2151

PROCEEDS TO GO TOWARDS REPAINTING
THE INSIDE OF THE MANGANA CHURCH.

Contacts for Valley Voice

PH: Judy: 6372 2155 Fax: 6372 2172

email: judith.spilsbury@bigpond.com

Accounts: Mary: 6372 2328

Please leave written material at the
St Marys Health & Beauty Centre,
Main St, St Marys,
or post: C/- Post Office, St Marys Tas 7215

Advertising: 2007

Classifieds: 25 words or less: free

Community notices: free.

Small ads. Garage sales. Greetings.

Thanks etc \$12.

¼ page \$20. ½ page \$30.

Full page \$50.

1 year posted subscription \$28.

Galaxy Exhibition—exhibition open from 8th—30th November 2007 (Tues –Fri, 11-4). For more info, contact Rita Summers at Gone Rustic, 37 Main Street, St Marys. (Tues –Fri, 11-4); phone 6372 2724 or 0409 289 997.

More Small Christmas Gifts—last time we made 2 lovely small gifts: this is your chance to create something unique for that special person in your life! When? Sat., 3rd Nov, 9-12noon: (Break O'Day Sew n Sews) Cost? \$10 (includes materials). For bookings, contact Rita Summers at Gone Rustic, 37 Main Street, St Marys (Tues –Fri 11—4) phone 6372 2724 or 0409 289 997.

CRICKET NETS ARE READY TO GO!

On Sunday 21st October, 2007 work on the cricket nets at the Sports Grounds was completed.

A BIG THANK YOU must be given to Craig Freiboth, Roger Salter, Jeff Woods, Bradley McDonald, Jacob Spilsbury, Kodie Donald and Jonathon McGee, for donating their time and effort and a special thanks to Matt and Margaret Osborne for their help on the day, and supplying the new netting.

The completed renovations look fantastic and will make this year's cricket season a lot more enjoyable for everyone involved, so let's keep our new nets in the pristine condition they are currently found in.

For all our interested Junior Cricketers—keep watching for upcoming details on our cricket season, as it will commence soon.

'PLAY AND LEARN SESSIONS FOR UNDER-5'S,
THEIR PARENTS AND CARERS'



This fortnight come & check out our parent resource library and join us for cubby ideas, vegetable printing, cellophane collage and lots of fun at:

Fingal Neighbourhood House
10.00-12.00 on Thursday November 1
Pyengana Community Hall
10.00-12.00 on Friday November 2
St Marys Anglican Hall
10.00-12.00 on Tuesday November 6
Bicheno 'Beachfront'
10.00-12.00 on Wednesday November 7

Call Karen on 0400 002 116 for further details.

Classifieds

FOR SALE

Single bed - solid pine with slat base and hardly used Sleepmaker Superior Rest mattress - \$125.

Fridge - small GE, goes well \$40.

Stereo speaker stands (2), black metal - \$50. **Phone 6372 2686.**

Yamaha Keyboard. Piano touch. PSR 240.

100 songs. Song, style voice, modes.

Carry cover, remote headphones. Rarely used. Lady owner. \$250. **Ph: 63768200.**

Cottage garden plants for sale. \$2 each.

50 St Patricks Head Road. St Marys.

Ph: 6372 2512.

Tennis Racquets: 1 Dunlop Max 4000 Pro with case \$50. 1 Pro Kennex Diamond Ace with case \$50.

Industrial Overlocker: Brown Hat, safety stitch overlocker with manual and extra needles - on bench with clutch motor. \$400. ono.

Various Wooden Hat blocks for sale, used for felting or hat making: Priced from \$30. **Ph: 6372 2022.**

High Pressure Cleaner. 1600 PSI, stainless steel pistons, brass pump, oil recirculation, spray & angle adjustment nozzle. Brand new, still in carton. Best offer. **Ph: 6372 2337.**

2 x 1000 litre water tanks in steel cage. Ideal for mobile firefighting. Excellent condition. \$90. each. ono. **Ph: 6372 2337.**

Woodworkers, your chance to purchase racks of air dried timber, boards various widths full cut. Squares, various sizes. Minor species — including Blackwood, Cyprus Pine, English Elm, (Oak) and Poplar. Suitable for cabinet makers, joiners and wood turners. For sale as one lot, open for tender, you won't buy better! **Ph: 6372 2337.**

8 tonne Hino ex refrigerator truck.

6 cylinder, just passed inspection, 4.5 x 2.4 x 2mt high pan interior dimensions, manual 53,000 on recon motor \$7000. ono. **Ph Jim 6372 2273.**

Falcon '94 Auto sedan. Good condition. \$1800. ono.

A. Coker, 42 Moriarty Road, St Helens. Young nanny goats. Very quiet. \$35 each. **Ph: 6372 2357.**

Toyota van '84. Not in working order. Body in reasonable condition. \$300. ono.

Subaru station wagon '85. Not reg. In good working order. \$700. ono.

Ph: 0419 179 112.

Tractor slashing available.

Ph: 6372 2762.

FOR SALE

SLEEP OVER BUNK BEDS.

Double on the bottom and single on top. Single mattress will need replacing. Double mattress comes with bunks. Black pipeline. \$150.

Ph: 0408 174 193.

"Moo-Poo". Finely screened. Any amounts. See Norm. **Ph: 6372 2380.**

Single bed mattress. Very good quality. As new. \$120. ono.

Professionally built wooden bird cage on stand. \$40. ono.

IKEA Cocoon child's chair. \$30. ono.

Ph: 6372 2634.

Tabletop sawbench. \$100.

Ph: 6372 2762.

5 tine chisel plough. 3 point linkage.

Ph: 6372 2299. (evening)

Timber four-shaft table loom. (\$350 ono). **Ph: 6372 2724 or 0409 289 997.**

Body Science T300 TREADMILL Heart Rate Monitor etc, 6 programs, large deck and foldable. As New: \$480 neg.

Ph: 6372 2792.

2 yearlings. 1 Angus, 1 Galaway & Angus cross. \$300 each.

Ph: 6372 2234.

Young nanny goat. Very quiet. \$35.

Ph: 6372 235.

Honda XR 600R 1998 Model Road Trail Motorbike

- White and red
In excellent condition
 - Registered until 24/12/07
 - Odometer 6400kms
- Included in price is - bike lift stand, owners manual and some accessories. \$5000 **Phone: 0438 536 067**

1998 Proton Satria. 1 owner. Good condition. Good on fuel. \$5,000. ono.

Ph: 6372 2723.

WANTED TO BUY

Double bed, slat base. **Ph: 6372 2105.**

Trailer load of good soil, delivered. **Ph: 6372 2155.**

Wood heater flue, for freestanding wood heater. In good condition.

Ph: 6372 2813.

Aviaries any con. will pay and pick up. **Ph Sue 6372 2273.**

All 2nd hand building material.

Ph: Gary 6372 2736.

Farm Machinery to suit hobby farmer.

Ph: 6372 2762.

LAND at Avoca or Fingal.

Ph: 6372 2762.

Treadmill. Must be in good condition.

Ph: 6376 1249.

The St Marys Pacing Club require approx 20 sheets of roofing iron (used) at least 1.2 metres long. Call 6372 2136. Mon. onwards. **Eric Bean. Secretary.**

Garage/Moving Sale

8 Belair Crescent,

Beaumaris

Saturday November 3rd

House Hold Furniture

& Items

Wide Span Sheds – available NOW through your new local agents, **Ian & Rita Summers!** For a free catalogue and more information, visit **Gone Rustic, 37 Main Street, St. Marys (Tues – Fri, 11-4).** **Phone: 6372 2724 or 0409 289 997.**

Swap n Go gas cylinders now available from **Gone Rustic, 37 main Street, St Marys** or call 0409 289 997 for opening hours.

Congratulations to Esther Rubenach who was one of three finalists in the **Pride of Australia Medal** in the category of **Young Aussie.** Esther was selected for the voluntary work she does within the **Break O'Day** community.

Congratulations also go to the Carers for Wildlife Tasmania Inc. for being one of the finalists in the category of **Environment Awards,** for their wonderful care for wild life during the **December bush fires.** The **Pride of Australia Awards** were presented by the **Mercury Tasmania** in recognition of everyday Australians who do extraordinary things in our community.

All these wonderful **Break O'Day** people received a framed certificate and a sterling silver pin at a luncheon at the **Morilla Estate** in Hobart, on the **11 of October, 2007.**

A LITTLE BIT OF HERITAGE: Jim Haas Frome River Power Station

When we flick the switch in our homes to turn on a light or some other electrical appliance, how many of us would give a second thought to the history of this wonderful, modern, convenient form of energy.

The knowledge of electricity, however, goes back to around 600 B.C. when Thales of Miletus is credited with the discovery that by rubbing amber it becomes charged. Otto von Guericke invented the first static electric generator in 1675, whilst the first current generator was made by Alosio Galvani in 1780. But except for some medical applications electricity had little use in those days.

The first real use for electricity was in 1840 when Samuel Morse invented the telegraph. Thomas Edison added lighting in 1880 and on the 4th September 1882 commissioned the world's first coal fired power station in New York City. It supplied some 85 customers with enough energy to power 5,000 lights.

In Tasmania, it would appear, some of the first electricity to be generated was at the Alberton tin mine on the Ringarooma River, near Derby in 1899. Early in the Twentieth Century Mt Nicholas and Cornwall coal mines build coal fired electricity plants to power lights, pumps and locos in their mines. It was 1908, however, that saw a power station built that would set the trend in future electricity generation for Tasmania.

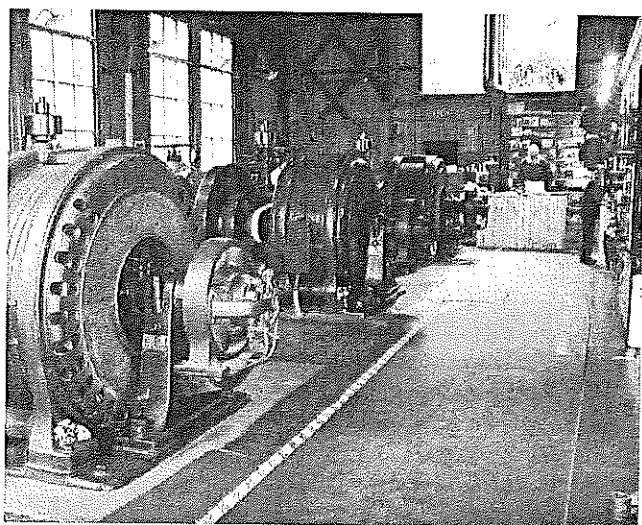
The Frome River hydro power station, which will soon celebrate 100 years of operation, was built by the Ringarooma Tin Mining Company to supply electricity to their mines along the Ringarooma River and the now abandoned township of Garibaldi.

The building of this sophisticated construction, that has remained almost unchanged since it was commissioned in 1909, was a tremendous achievement of its time. The dam that feeds the turbines is built on the Frome River, high above the station and is constructed with hundreds of tonnes of rock, every one of which would have been handled by man and bullock and stacked in place so as not one could ever be moved by the forces of nature.

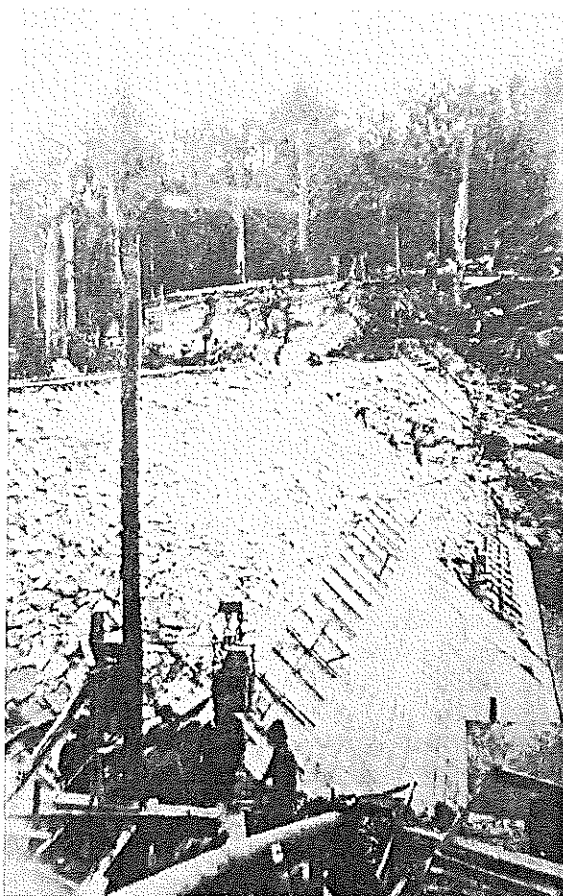
The power station building itself is a simple corrugated iron building, but once inside you are blown away by the sight and roar of the three huge turbines, all clean, shining and working in perfect harmony with each other to reach their capacity of one megawatt of electricity.

But one is immediately left wondering what a chore it would have been in 1908 to lumber these huge machines, weighing several tonnes, all the way from Launceston over unmade roads, through some of the roughest country in Tasmania, with nothing more than a team of bullocks. A job that even with today's machinery would be a task to be reckoned with.

But it was all worth it for the Ringarooma Mining Company; they now had a source of power to run their pumps and lights by simply flicking a switch.



The three huge turbines that were installed at the Frome River Hydro Power Station in 1908 are still working as good as new almost 100 years later.



The building of the Frome River Hydro Power Station Dam in 1908.

But the power station's initial purpose of supplying power to the tin mines was rather short lived. The 1929 floods, together with the 1930's depression and more expensive mining methods, saw most of the tin mines along the Ringarooma River close towards the end of the 1940s and the power station was hooked into the main Tasmanian power grid, with the electricity being sold to Hydro Tasmania.

When you talk to Peter Dickson, co-owner of this tiny power station, you immediately become aware of how proud he is of this unique part of Tasmanian history. Peter came to work at the station 40 years ago and when it was put up for sale 18 years ago he and his partner Michael Cook scraped up enough money to buy the place and have worked it successfully ever since. Between the two of them they maintain and keep the place spick and span with everything working in perfect condition. Indeed, the three huge turbines look as if they were installed only yesterday.

You won't find Frome River on too many tourist maps, but with the Trail of the Tin Dragon project underway in the North East, one can only hope that Peter and Michael will be rewarded with their inimitable, hydro power station becoming a valuable part of Tasmanian history.

ST MARYS HOTEL



Bruce & Julie wish to thank their family, customers, staff and community for their ongoing support. Cheers!

We have just installed a Big Screen DVD in the lounge!
Feel welcome to bring along your favourite flicks to enjoy in a warm relaxed environment amongst friends.

SINCE BRUCE IS BACK, SO IS THE MUSIC !!!!

Sat 3rd Nov 8pm Ray Singline & the Trawldogs (with special guests)
Fri 16th Nov 8pm Kate Meehan & Skip Landy (Multi award winner - Cool Jazz/Blues)
Fri 30th Nov 8pm Bruce, Pete & Simon (Rock out with funky blues & rock 'n' roll)

Get your dancing shoes on!!!!

**Keep watching the outside cnr blackboard for specials and
Wed. night acoustic jams in the bar.**

Mc Nulty Kitchens & Joinery

The 1999 TAS HIA Kitchen of the Year Winner
& National Finalist.
Dale Mc Nulty

If you are in Launceston,
feel free to visit our showroom at:
73a Forster St, Invermay.

Phone: 6334 3353



Fax: 6334 3392

- * On site consultation available after hours.
- * Complimentary computer layout.
- * Designs to suit all budgets.
- * We take care of everything, including plumbing, electrical, building, tiling & plastering.
- * Design through to completion.

With many years experience in the kitchen industry.
Having designed & installed kitchens interstate,
I have some innovative, user friendly ideas.

Specialised areas:

- * St Marys
- * St Helens
- * Fingal
- * Swansea
- * Scottsdale
- * Bridport

Letters to the editor

To the Voice,

Referring to your last edition's front page story "Council wants to move the Scamander Skate Park".

Council are not the only ones who want to move the Skate Park. A large majority of Scamander's residents have signed a 500+ petition to relocate the skate park from our foreshore over next to the old Scamander Bridge. Then the Surf Life Saving Club can build directly behind the Mouth Café and still enjoy direct beach access, convenient parking north off Dune St and most importantly will cut dramatically on the visual impact on this unique and stunning area.

Councillors have made a few bad decisions, firstly approving this 32m X 14m Skate Park on our foreshore, then the time extension, and then supporting a two story Surf Club building at the end of the River Mouth car park, pushing the Skate Park closer towards the residents. I guess this goes to show they are only human, and how people can manipulate them to get what they want right or wrong. Mind you though the use of some common sense would be handy.

This foreshore area is Scamander's best asset with its spectacular views, a place to relax and enjoy your fish and chips, BBQ or picnic. A very popular spot with Tassie locals and tourists, it's the last place you want a Skate Park.

Christina Mackeen (Skate Park project manager) has given no consideration for other sectors of youth activities in this area. To spend \$100,000+ on a Skate Park is a bit extreme, some people have concerns it could turn into a white elephant. Relocated over next to the old bridge which is hardly used now, and they should re-design something more in proportion for Scamander's needs.

Christina Mackeen is concerned about vehicle traffic on the beach access that you can hear and see doing 5 or 10 km/h? If the Skate Park gets built next to the beach access I would be more concerned about a "poo shot" skate board hitting me in the side of the head because you won't hear or see that coming!

Three years ago I was being blamed for holding up the Skate Park, then it was the council's fault, then it was the Surf Club, now it's the council's and after that this will probably be my fault again.

If the Scamander Skate Park Interest Group had been a bit flexible a smaller Skate Park would have been completed two years ago.

I would like to know why the Skate Park needs to remain on its original site? After speaking with Mr Dick Adams, he said the Federal Grant, near \$50,000 would be okay as long as its an approved Skate Park by the Council in Scamander. Councillors have given Christina Mackeen more than a fair go, there has been three 12 month time extensions on \$22,000 of council money for Scamander. Yes Christina Mackeen has worked hard on the Skate Park project but if she had of listened to people and embraced the Surf Club idea 3 years ago when it was first suggested and worked with instead of against everyone, it would have saved a lot of heartache and paperwork.

Speaking of "Natural Justice", Christina Mackeen you would have thought the "**Vote of no confidence**" when you were President of the Scamander Community Development Association should have been sending you a message! In 17 years what have you achieved for Scamander? Apart from stopping other people's ideas and upsetting lots of people.

If the Skate Park goes on the foreshore you will have only achieved ruining this serene area.

As for the Surf Club committee, they think they can just waltz in and dump a two story building right in front of everyone and not even bother to ask the locals, they've got another think coming.

Councillors have an opportunity at their November meeting to use the petition to make a good decision that the community want.

Will common sense and democracy prevail?

Thanks for the Voice.

Greg Chippindale.

Letters to the Editor

Friday 19 October, 2007

Dear Sir,

I have challenged the Labor Member for Lyons Dick Adams to a debate at several venues throughout the electorate so that voters can assess our worthiness, and question either of us at length if they wish.

Mr Adams has refused a debate. This means he is running away from scrutiny and I urge Lyons voters, even Labor voters, to call him to account and demand that he front up to scrutiny.

I have written to the Mayors in several municipalities throughout the Lyons electorate, some considered Labor strongholds, asking the Mayor to referee a debate. I have offered to pay for the venue hire.

The people of Lyons want to know about issues such as health and aged care services, specific road and transport projects, tourism services and what we are doing to assist with their water problems.

They want to know what Mr Adams has done over the past 14 years to highlight these issues, with either the Australian Government or State Government, and what does he have in mind for them into the future.

Mr Adams has been the Member for Lyons for 14 long years. When he was first elected to Federal Parliament in 1993 the young people in Lyons, who are voting for the first time in this year's federal election, were only four years old.

The electorate of Lyons is a vast region, rich in diverse communities and full of compelling issues. There is much to consider and debate and that is why I have proposed community forums across the electorate.

To be the elected representative is a great privilege, and any candidate who is too afraid or too pre-occupied to front up to a debate on issues specific to Lyons, does not deserve to be the elected representative.

Yours sincerely,

Geoff Page

Liberal Candidate for Lyons

315 Oaks Road

Carrick TAS 7291

Ph: 0418 134 595

Letter to the editor

Sir,

In reply to Mr Hersey; he must understand that any person in a position such as a councilor, carries a burden of responsibility to the electorate for a fully and open observable process.

I can well understand the temptation for a long serving member to do what works and to cut corners but that will not do in this day and age. However we are becoming a more knowledgeable people and should demand as the norm, accountability from those elected to represent us, at any level. If we have a representative who won't make their actions open and approachable then that person really must consider their position. I notice that during the recent meet the candidates for council sessions several of the present incumbents knew nothing of the agreement with Hydro signed on 3rd July.

In this particular, cloud seeding, I understand the Tasmanian Farmers and Graziers Association were consulted but what of other people? Doesn't the rain fall on us as well, don't we have any right to a say or indeed anyone living in this council area.

I'll repeat what I said in my previous letter; before any decision is taken a period of discussion among the electorate must take place and if thought necessary a referendum at the end of it.

In the last couple of days I've been informed a few years ago the Break O'Day council was put into administration, I know nothing of this and would appreciate any information: perhaps through this newspaper, who was involved and if any of those involved or their associates are still in council positions.

Yours,
Neil Capill.

What love means to children aged between 4 & 8.

"When my grandmother got arthritis, she couldn't bend over and paint her toenails anymore. So my grandfather does it for her all the time, even when his hands got arthritis too. That's love."

Rebecca - age 8.

"Love is what makes you smile when you're tired."

Terri - age 4.

"Love is when Mommy gives Daddy the best piece of chicken."

Elaine - age 5.

"Love is when your puppy licks your face even after you left him alone all day."

Mary Ann - age 4

"Love is when Mommy sees Daddy smelly and sweaty and still says he is handsomer than Robert Redford."

Chris - age 7.

St Helens Health & Fitness

Shaolin Kung Fu beginners classes now available

Fitness, Self-Defence, Classical Martial Arts

New Pilates packages available

Core strength, spinal flexibility, control

Authentic Pilates Shaolin Kung Fu

Weights Pliability Cardio

Group fitness classes Squash

13 Pendrigh Place St Helens

6376 2994



A reasonably quiet fortnight, with only one report received concerning a mobile phone that local Police are currently investigating. I am also pleased to inform our residents that the Valley officers have recovered stolen property and the offender has been charged and will face court proceedings.

Just to bring to your attention with a report of a shooting of a wedge tailed eagle and a wombat, these animals are a PROTECTED SPECIES and, the penalties are great. The investigations are continuing and hopefully the offender or offenders are caught. With the upcoming Sesquicentenary, just a general reminder that the population of the town will increase and with all such events the consumption of alcohol greatly increase. Bearing in mind, that those who do know me will realise, that I don't have a problem with the consumption of alcohol, there will be extra police resources utilised in this area and, under the Police Offences Act, open containers of alcohol are not permitted in public streets and if caught it will result in a \$100 fine, which in real terms makes that 1 stubby, becomes very, very expensive.

On a personal note, both my wife Melody-Anne and I, have been here only a very short time and our impressions of this area are that it is somewhere we would certainly like to spend the rest of my career at. With that in mind, we would both like to thank everyone we have come in contact with. Your attitude to us has been nothing short of magic. Hopefully we will see you soon, if not we will wave as we drive through St Marys, on the way to St Helens for fishing. Wick Meyers, Sergeant.

St Marys Police Phone Number	63721010
Non Urgent Number	131444
Urgent and Life threatening	000

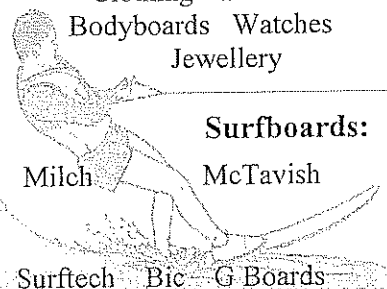
Scamander Beach Surf Shop

6 Lagoon Esplanade
Scamander

Ph: 6372 5529

Scamandersurf.com

Bathers Wetsuits DVDs
Clothing Footwear
Bodyboards Watches
Jewellery



Surfboards:

Milch McTavish

Surftech Bic G Boards

Bay Surf Shop



2 Pendrigh Place
St Helens

Ph: 6376 1755

The Tasmanian Lymphoedema Centre Inc



Gold Coast Holiday Raffle

Tickets \$2 and available at St Marys Post Office
and from TLC Members as per Cup Luncheon notices

1st Prize:

Five nights Accommodation on the Gold Coast
with an Airlines Voucher to the value of \$250

2nd Prize:

A \$50 Meal Voucher from the White Sands Resort

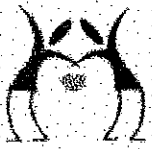
3rd Prize:

Premium Wine Four Bottle Pack from Big Bargain Bottleshop

4th Prize:

Sunday Country \$40 Lunch for two at the Pub in the Paddock

*Drawn at the St Marys Community Hall at 9.00pm
on Saturday December 1st 2007*



IT'S ON AGAIN

Ladies and Gentlemen

This is an open invitation to join in the fun at our

Tasmanian Lymphoedema Centre Inc.

St Marys Sesquicentenary

MELBOURNE CUP

'Chicken & Champagne'

(and the usual scrumptious desserts of course!)

LUNCHEON

Tuesday 6th November 2007

Doors open 11:30 for 12noon luncheon

St Marys Sports Centre

Complimentary drink on arrival

\$15 per person

Sweeps & Raffle

Prizes for: Lucky Door
Cup Lady
Cup Gentleman
Cup hat
Novelty hat



Book early for a group table.

Tickets can be bought from:

Ruth 6372 2231
Cheryl 6372 2450
Audrey 6372 2337
Janet 6372 2162

Door sales on the day.

Giveaway prizes throughout afternoon

Keep the Money In St Marys

A Local First campaign has been organised for St Marys local business.

The economic initiative and program is designed to help consumers recognize that supporting locally owned independent businesses keeps up to 3 times more money recirculating in our town which helps in a big way to maintain the uniqueness of our region and creates and maintains jobs here.

Local First: choose local businesses draws public attention to the benefits of shopping at locally owned businesses rather than heading to Launceston, Hobart or other places.

The initiative will provide an easy way to identify the businesses involved through a public awareness campaign utilizing store window decals and in-store displays with a distinctive logo.

The objectives of the campaign are to:

- * Re-circulate more dollars in our community to promote a strong local economy
- * Support and strengthen locally owned, independent businesses and create and maintain local jobs
- * Preserve and enhance our unique town
- * Get consumers to commit to spending more dollars with our participating locally owned businesses

To find out more contact Kim on 63 722 211

RESCHEDULED Film Making Workshop

Between the ages of 12 and 25? Ever wanted to learn how to make films?

Come along to a three day workshop and learn all about film making, plus take part in making some short films for Tropfest 2008.

@ St Marys Community Hall. Cost \$30.00

FRIDAY 2nd
November
9am—4pm
Scripting
Workshop

SATURDAY 3rd
November
9am—4pm
Filming

SUNDAY 4th
November
9am—4pm
Editing

Phone Cassie on 63765242 or txt 0400052511 by Wed 31st November

You will need to bring with you pen, paper, and an idea for a short film based on the theme "8 and green".

Lunch and snacks provided.

Limit 10 participants. DON'T MISS OUT



MECHANICAL R
ST MARYS

41 St. Marys Tas 7215
 PH: 6372 2335
 Fax: 6372 2822 Mob: 0419 503 109

SAWMILLING
 YOUR TREES - YOUR PLACE
 FOR PORTABLE SAWMILLING

Ph ROSCO:
 6372 2147

Peter Dane Gardening
 St Marys
 Qualified Horticulturist

Over 25 years experience
 in all aspects
 of garden maintenance, restoration
 and organic vegetable growing.
 Call 6372 2686 or 0408 208 658

"When the world wearies and society
 does not satisfy... there is always
 the garden." Anon.

*Working
 for you in
 Lyons!*

Rene Hidding MHA
 Your Liberal Lyons Member

Ph: 6397 7411
Fax: 6391 3103
 17a Marlborough Street, Longford
rene.hidding@parliament.tas.gov.au

FRANK GILES
 ELECTRICIAN
 Authorised Aurora Contractor.

Lic. No. C0950
 Electrical Lic. No. A4860
 Ph: 0419 372 192
 AH: 6372 2341

RATHA B'ZAR

40 Main St St Marys Ph: 6372 2684
 Open 10—4 Mon to Fri. 10 -1 Sat

It's time for SPRING CLEANING,
 SO spring into RATHA B'ZAR
 for our once a year
"GREEN DOT SPECIAL"
 Look for a green dot for
 BIG DISCOUNTS.
 UP TO 50% OFF!!!
 WE HAVE GREEN DOTS ON
 EVERYTHING.....
 CLOTHES, HOMEWARES, JEWELLERY,
 BOOKS, TOYS, ARTWORK.

TWO WEEKS ONLY

LAYBY NOW FOR CHRISTMAS.
 ONLY 2 MONTHS AWAY!

HARRIS FUNERALS
 Lindsay & Diane
 (D. Bailey & son) A.F.D.A
 Ph/Fax: 6376 1153 Mob: 0418 133 420

Office & Residence:
 114 Cecilia St
 St Helens

Chapel:
 46 Tully Street
 St Helens

We are here when you need us
 to arrange Burial or Cremation.
 Pre-paid and pre-arranged funeral plans are available.

Classifieds in the Valley Voice are free of charge. If your articles are not sold after the first entry, we will repeat the ad in the next issue.

Please inform us if your items are sold.

Please note: Letters to be published in the Valley Voice must be signed. Your name need not be published, but we must have a signature.

Articles and letters published in the Valley Voice are not necessarily the opinion of the staff and volunteers of this community paper. Ed.

Nipping bushfires in the bud

Tree cutting near Aurora's powerlines is now underway in fire danger areas across Tasmania. This work will be undertaken by Aurora and its authorised Contractors. This ongoing maintenance program by Aurora aims to:

- protect property by preventing fires caused by vegetation coming into contact with powerlines
- ensure a safe, reliable power supply for all Tasmanians.

Aurora and authorised Contractors will be entering properties, where required, for the clearing of Aurora owned lines. In most cases this work will be at no cost to property owners. Customers are reminded of their responsibilities to keep vegetation clear of privately owned powerlines.

For further information contact Aurora Vegetation Officers responsible for your area:

NORTH

Vegetation Co-ordinator North (greater Launceston area) – (03) 6324 7521

Vegetation Officer North East – (03) 6324 7617

Vegetation Officer North West – (03) 6420 2301

SOUTH

Vegetation Co-ordinator South (greater Hobart area) – (03) 6271 6690

Vegetation Officer South East – (03) 6271 6189

Vegetation Officer South West – (03) 6271 6290



■ The region in which tree cutting may occur.



Aurora
ENERGY

Get ready for the St Mary's
Mystery History Tour !!

Thanks to the
Healthy House Community Project-
it's HERE!

Sunday 28th October -

starting at the Railway History Room.
Meeting at 1.30pm for a 2pm departure
and returning at about 4.30pm.

Do you want to know the history of your house in
St Mary's? What about your street?
Has the streetscape of St Mary's changed over the years?

If you have lived in St Mary's for 2 weeks,
2 years or even two generations,
then this is the tour for you!

Cost will be by donation,
thanks to the Healthy Community Project Team,
and we are looking for residents of any age or mobility
to contribute to the running commentary.

Please feel free to suggest a route/itinerary if there is
anything you want to know about your town's history.

Places are filling up fast - please contact 6372 5060.

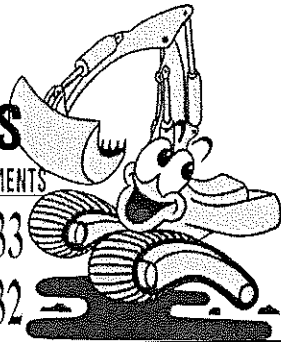
or drop in to the Railway History Room
and we'll add you to the list!

C & D
EXCAVATIONS

FOR ALL YOUR EARTHMOVING REQUIREMENTS

Phone : 03 6372 2033

Mobile : 0439 722 032



LOCAL OWNER - OPERATOR
OVER 20 YEARS EXPERIENCE

Ph : Dana or Craig 6372 2033 /0439 722 032

If the earth doesn't move for you, let us help !

- ◆ 2 x 20 TONNE EXCAVATORS WITH TILT BUCKET & RIPPER, ROCK & LOG GRAB & QUICK HITCH
- ◆ D 65 KOMATSU DOZER, RIPPER & TILT BLADE
- ◆ 10 YARD TIPPER
- ◆ COMPACTION ROLLER
- ◆ 4 WHEEL DRIVE TRACTOR & SLASHER
- ◆ DAMS
- ◆ ROADING
- ◆ SLASHING
- ◆ FIRE BREAKS
- ◆ LAND CLEARING
- ◆ HOUSE SITES
- ◆ BRIDGE CONSTRUCTION
- ◆ ROAD GRAVELS AVAILABLE
- ◆ AND MUCH MORE

ST MARYS HISTORY AND GIFTS.

OPEN 7 DAYS

10-5 PM WEEK DAYS

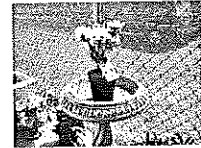
10-2 PM SUNDAY

(Closing at 4pm week days through winter.)

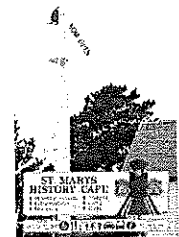
WE NOW HAVE A
NEW RANGE OF
GIFT WARE.



A RANGE OF PLANTS.
CAMELLIAS : \$10
RHODODENDRONS: \$13
GOLDEN ELMS: \$29.50



WELCOME ABOARD!
THE JOURNEY STARTS
AT THE
ST MARYS
RAILWAY STATION.
Telephone: 6372 2007



CALL IN AND CHECK US OUT!

East Coast Phone & Communications

- * Telephone & Data cabling
- * Commander Systems
- * Sound System cabling
- * TV Antenna & Tuning
- * Digital Set Top Boxes, supplied & installed where reception available



PO Box 29,
St Marys 7215
Ph: 6372 2402
Mob: 0409 959 121

John Heron
30 years
experience
ACA Licence

ST MARYS NEWSAGENCY



BANDS & BATTERIES

DEIDRE AND ANNETTE HAVE BEEN PRACTISING!!!!

They now feel confident that they can help you
with your batteries and bands for your watches.

**SO IF YOU FIND YOURSELF
WITH NO TIME ON YOUR
HANDS (ARM) COME ON IN
AND SEE US. TIME WILL NO
LONGER STAND STILL AFTER
YOU HAVE PAID US A VISIT.**

FREE HEALTH CHECKS & A BOYS NIGHT FOR THE LADIES!

The Healthy Community Project held the highly successful men's health night 'Talking Tackle' in May this year and they are again bringing renowned men's health expert Bernard Denner back to the area.

How does a 'blokes' health and wellbeing affect his family? Women are encouraged to find out about the major health issues concerning men, how they can take responsibility for their own health, how to understand blokes, relationships and parenting and how to avoid separation with 'romance' and communication.

Bernard will be delivering a Men's Health Night for the Ladies that is not to be missed by women who care about their partners, sons and friends health. Come along to the Scamander Sports Complex on Tuesday 30th October, 7.00 – 9.00pm to find out more, **FREE OF CHARGE**, RSVP essential phone 6376 5242.

FREE HEALTH SCREENING will also be available again, men and women (particularly those who do not see a GP regularly) are encouraged to have a free health screening to identify health risks and take early preventative action. "When screening was undertaken in May this year we had a large number of individuals who were advised to make some lifestyle changes and come back and have another check, now is their opportunity, the machine will not be available again in the near future" said Fiona Watts Health Promotion Coordinator.

Testing will be available at the St. Helens Veterans Information and Support Centre Tuesday 30th October, 10am – 12noon and 1 – 3pm. On Wednesday 31st October Testing will be available at the St. Marys Memorial Hall from 1 – 4pm. For more information please contact the Healthy Community Project on 63765242.

Rae & Partners
Lawyers Barristers & Solicitors
93 York St Launceston
Ph: 6337 5555

Visiting :

St Marys Community Health Centre

Alternate Tuesdays : 9 am – 10 am

Appointments: 6337 5555

Tasmanian Lymphoedema & Laser Centre Inc.

Operating from the

St Marys Community Health Centre

Do you have a sporting injury,
ulcer, arthritis, gout, tennis elbow?

As well as treatment for the condition of Lymphoedema, the low level laser at the Tasmanian Lymphoedema Centre, can help with the treatment of these common conditions.

Call the enquiries/booking office on 6372 2900

Laser Therapist Kate Williams 6372 2111
Massage Therapist Sue Christianson 6372 2111 or
0418 515 419



Email: tlctstmarys@hotmail.com
www.taslymphoedema.asn.au

For service and reliability

TROTTERS CONTRACTING CORNWALL

- Septic tank cleaning service
- 7.5 ton excavator & tere yard truck hire
- Licensed water cart for bulk supplies of drinking water
- Water cart for roadwork
- Also St Marys Wood yard for all your wood supplies

*Remember it doesn't matter who
Ring Glen or Marcus on
6372 2107 or 0412 275 432
6372 2742 or 0418 322 035*

Excavator fitted with grab • Custom made v drain buckets • Narrow trench bucket for poly pipe & electrical • Ripper and all digging & clean-up buckets • Supplies of bedding sand & gravel • House sites & blocks cleared • Rubbish removed & roadwork

If we can't do your work we will do our best to find you someone who can

HYPNOTHERAPY

IF YOU NEED HELP WITH:

- * SMOKING
- * WEIGHT CENTRAL
- * DEPRESSION
- * STRESS
- * GRIEF
- * PHOBIAS
- * ALL PERSONAL PROBLEMS

HYPNOTHERAPY WILL WORK FOR YOU.
IT'S SAFE, GENTLE AND EFFECTIVE.

SANDY WINSTANLEY
CLINICAL HYPNOTHERAPIST
AND COUNSELLOR.
SERVING THE EAST COAST.
Ph: 6373 6106



DESIGNER

HAIR

STUDIO



So call in and see Kellie and Emma for all your hair and beauty needs.

Opening hours: MON—WED—FRI 9–5 PM
TUES—THURS 9– LATE THUR. BY APPOINTMENT

Main Street,
St Marys.
Telephone:
6372 2108



NEW!

KERASILK

SHAMPOO AND CONDITIONER PACKS AVAILABLE



Appointments
available
NOW

Physiotherm Infrared Therapy available at Designer Hair Studio.

Call in or phone and talk to Kellie today.
Price: \$25 per ½ hour session. \$150 x 10 sessions.
PHONE 6372 2108

Appointments
available
NOW

e.SCAPE

Tasmanian Wilderness Cafe Gallery

In the gallery:

Arts Festival In A Teacup 2007 MAYPOLE ART PRIZE

A selection of local artist works in various mediums.
Opens Saturday October 20th and runs until November 3rd.
Public 'view and vote' closes at noon
Saturday November 3rd.
Winners announced at the Maypole Festival.

In the fully licensed café:

The BIG breakfast, freshly made sandwiches, home-made biscuits, slices, cakes, soup and so much more!

Takeaway available

A selection of Tasmanian beer and wine.

Great Coffee, milkshakes, smoothies and
Tasmania's Hartz drinks.

opening hours:

9 – 3pm Sunday Public Holidays
9 – 5pm Monday – Saturday

21 Main Street St. Marys Tasmania 6372 2444

FREE WASABI INFORMATION

DO YOU HAVE A PERMANENT STREAM, BELOW 10°C,
UNDER TREE COVER, NOT SUBJECT TO FROSTS
BELOW MINUS 3°C?

INFORMATION BOOKLET AND BROCHURE
AVAILABLE FOR ONE INTERESTED PERSON ON THE
GROWING AND HARVESTING OF JAPANESE WASABI.
(HORSERADISH/CRUCIFER/MUSTARD FAMILY)

CALL SIMON ON 6372 2515.

CHAINSAW OPERATION, MAINTENANCE AND LICENCE COURSE.

NATIONALLY ACCREDITED COURSE
Thursday 15th - Friday 16th of November, 2007

To be conducted in the Woodwork Guild premises
located behind the St Marys Railway Station.

Training to be conducted by
Forestry Tasmania Tafe.

Additional Requirements

Steel Capped Boots - Helmet
Safety Glasses - Ear Muffs

Hi Visibility Vest - Cut Resistant Pants or Chaps

If unable to obtain some of these materials, check with
TAFE Forestry who may be able to supply them.

Course cost \$310.00

Licence cost \$ 50.00

Venue hire \$ 5.00 (covers two days)

Total: \$365.00

No Concessions available.

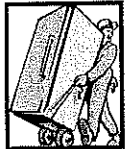
Contact Peter Reid on (PH: 6372 2286) for further details
and place availability, as seats are limited.

Or Tafe Forestry on (PH:6336 4242) re: St Marys course.

Ransley's Appliance Service

P O Box 136
Scamander Tas 7215

- Washing machine NOISY?
- Refrigerator runs too LONG?
- Clothes dryer blows cold AIR?



Then you need the service
of our technicians.

Ring us on: Scamander: 6372 5307

PROPERTY PREPAREDNESS FIELD DAY

CONDUCTED BY TASMANIA FIRE SERVICE

(A Recovery funded project)

SATURDAY 27TH OCTOBER, 2007

SCAMANDER SPORTS COMPLEX @ 10.30 a.m.

Tas Fire Service will demonstrate how to prepare your property against bushfire and the
steps you need to take to make sure you defend your home safely

RSVP's required – contact Chris at Council on 6376 7900 prior to Tuesday 23rd October, 2007 if you
will be attending.





**St Marys Sesquicentenary Reunion Weekend
Organised by the St Marys Lions Club**

Patron

The Hon. David Llewellyn MHA

Member for Lyons

Minister for Primary Industries & Water

Minister for Energy

Minister for Police & Emergency Management

DECEMBER 1 & 2 2007

REUNITE, REMINISCE & REFLECT

WE NEED YOUR HELP

The Great St Marys Bake-Off

Calling all bakers in the valley – we need your skills. We know that there are many wonderful bakers out there and while this has been devised as a genuine competition (with proper awards that will go down in history) the real objective is to obtain a supply of cakes/scones/slices that the Hospital Auxiliary (the Lions Club nominated charity) can access to sell morning and afternoon teas. The Auxiliary is working hard to purchase a new defibrillator for the Hospital and the Reunion day will provide them with a wonderful source of revenue.

So get baking – the categories are:

- Sponge Cake
- Chocolate Cake
- Loaf Cake
- Plate of 6 or more scones
- Fruit Cake
- Plate of 6 or more date scones
- Decorated Birthday Cake
- Decorated Fruit/Christmas Cake
- Plate of 6 or more slices

Entries should be delivered to the Community Hall by 8.30am on Saturday 1 December – hopefully we can complete judging and announce the winners at 10.00am which will also coincide with the actual opening of the Reunion Weekend.

Volunteers

The Hospital Auxiliary are few in number and will struggle to cope with supplying morning and afternoon tea; they will need all the help they can get. If you could help for an hour or so during the day please let Harry or Kerry at the Post Office know.

Photos

We are still looking for photos of people and events relating to St Marys, particularly wedding photos. Please drop them off at the Post Office and we will copy them and return them.

Supper Dance

There will be an old-fashioned Supper Dance in the Community Hall commencing at 7.00pm on Saturday 1 December. There will be a live old-time dance band so dust off your dancing shoes and make sure you are there. The Cornwall Community association will be running the bar on the night and a full range of refreshments will be available. Bring along a plate for supper.

Community Breakfast

We want to try and get **THE WHOLE TOWN** to the Community Breakfast on Sunday 2 December. There will be a variety of entertainment and plenty of food so keep your eyes and ears open for more details. Please make your plans to be there and share in this historic event.

**Its going to be a great weekend with plenty of people coming to St Marys
– get involved, get interested and participate – let's show the whole of
Tasmania how strong a community we are!**

FUNDS FOR HEALTH LOCALLY IN ST HELENS

Senator Guy Barnett has presented an Australian Government cheque for \$197,300 to the Break O'Day Health Resources Association (BODHRA), to run a program to improve the health of local people.

"The grant is part of national initiative to provide community organisations with resources to run local programs offering nutritional education, physical activity programs and weight management plans," Senator Barnett said. The funding is through the Healthy Active Australia Community and School Grants Program, part of the Australian Better Health Initiative.

Senator Barnett visited the BODRA offices with Federal Lyons Liberal candidate Geoff Page. "The program will employ a Lifestyle Coordinator to educate individuals about the benefits of physical activity and good nutrition in the regional and rural municipality of Break O'Day in Tasmania's East Coast," Senator Barnett said.

The community has a population of approximately 6,036. The Lifestyle Coordinator will have the responsibility to design and implement programs for physical activity and healthy eating.

"Community organisations and schools are in a good position to identify local problems and find local solutions and I congratulate BODRA for its role in improving the health of residents," he said.

A wide range of not-for-profit community groups across Australia have been awarded grants and include programs to help people with disabilities, disadvantaged youth and people with, or at risk of developing, chronic diseases such as diabetes, heart disease and cancer.

Under the program, one-off grants of between \$10,000 and \$200,000 for projects of up to 18 months are available. The grants have stimulated an overwhelming response from community and schools groups with the assessment process still underway.

"ABHI is a four year, \$500 million joint Australian, State and Territory Government initiative to strengthen the focus on preventative health, better management of chronic disease and health promotion," Senator Barnett said.

**60 DAYS UNTIL
CHRISTMAS**



Ken's Fishing Lures

For use in fresh or salt water angling

You can email me on gornarston@australiabarnet.com.au
Or phone me after 5pm on 6353 1863

Photo shows:

Top: 75mm long body, but counting bib it is 100mm long and floats 8 colours \$5.00

Bottom: 95mm long floats 11 colours \$3.00

Try them out!

THE SAY. CAGERATTLER

It's all been pretty quiet on the Western Front of late in regard to East Coast Health Services and the review, until last Friday night. A story appeared on Stateline about that very thing, that has begun talk again on this crucially important subject.

We have of course recalled 1997 when the then Liberal Government successfully shut down our facility to a 9-5, 5 day a week set-up, which as we remember caused us a great deal of dissatisfaction.

This in turn prompted an incredible campaign that through the superlative efforts of the Hospital Support group, eventually brought enough pressure for the new Labor Government to re-institute full services. Later on these were upgraded which gave us all hope that they would always be retained.

We constantly hear descriptions of 'bed costs' and ours are on the higher end of the scale. So what? This also happens to be an ageing community and if ever a place needs full 7 day -24 hour service, it's here, seeing we don't have really close by Aged Care like Medea Park or similar. Apparently Medea Park is over stretched at times too.

It seems no firm decision has been reached yet on the fate of our hospital (sorry, Health Centre).

Perhaps it's time we ALL lobbied strongly our local members and the Health Minister, regardless of political persuasion, and remind them that this is no ordinary community who will roll over and accept beaurocracy all that readily if we choose to wish that our full services remain.

Excuse the language but "Bugger the Cost". Health is a primary right and if we do lose 7day/24 hour care without suitable major compromises, at least, there is going to be a lot of very, very angry people.

Something else about all this. ST MARYS PASS— There is no major facility between the top of the pass and Campbell Town. That pass is as we know, suspect in adverse weather, so imagine if the pass was unusable and there was an emergency after 5pm or on the weekend.

You'd be stuffed, wouldn't you?

Let's hope common sense prevails and our hospital (that's what it is!) is retained by this and future governments.

What do you think?

What love means to children aged between 4 & 6.

"My mommy loves me more than anybody
You don't see anyone else kissing me to sleep at night."

Clare - age 6.

"When you love somebody, your eyelashes go up and down and little stars come out of you." (what an image)

Karen - age 7.

"Love is when my mommy makes coffee for my daddy and she takes a sip before giving it to him, to make sure the taste is OK."

Danny - age 7.

MEALS ON WHEELS ROSTER

Oct/Nov	St Marys	Fingal
Mon 29th	Fe Gillies	Sharon Hall
Tues 30th	Pam Gillies	Prev Mills
Wed 31st	Wendy Aulich	Barbara Saunders
Thurs Nov 1st	Kaye Nailer	Lynda Bean
Fri 2nd	Jeff Herrmann	Mim Woods
Mon 5rd	Fe Gillies	Carole Woods
Tues 6th	Ruth Aulich	June Hall
Wed 7th	Liz Rice	Patsy Death
Thurs 8th	Gail Gamble	Jan Marshall
Fri 9th	G & M Derbyshire	Christine Woods (S)

Church Services

Catholic Parish of St Marys

Sr. Lorraine Groves

Parish House. Ph: 6372 2252
Mob: 0409 172 741

1st Week:

St Helens Vigil	6.00pm
Bicheno	9.00am
St Marys	9.00am
Fingal	9.30am
Swansea	9.30am
Campbell Town	5.00pm

2nd Week

St Helens Vigil	5.00pm
St Marys	9.00am
Bicheno	9.00am
Fingal	9.30am
Swansea	9.30am
Campbell Town	5.00pm

3rd Week: MASS

St Helens Vigil	5.00pm
St Marys	9.00am
Bicheno LITURGY	9.00am
Swansea	11.30am
Campbell Town	5.00pm

Week 4

Liturgy of the Word

St Helens Vigil	5.00pm
St Marys	9.00am
Bicheno	9.00am
Fingal	9.30am
Swansea	9.30am
Campbell Town	5.00pm

Anglican Parish of Northern Midlands

Avoca: 11am 2nd/4th Sundays
Fingal: 3 pm 1st/3rd Sundays
Mathinna: 3pm 2nd/ 4th Sundays
Ross: 11am 1st/3rd Sundays
Campbell Town: 9am every Sun.
(3rd Sunday - Family Service)

Anglican Parish of Break O'Day

Ph: 6376 1144

St Helens Every Sunday
8 am and 10.30 am

Kanga Sunday School

10.30 am - 12 noon every
Sunday for children
5 - 12 yrs

St Marys 10 am

(No service 5th Sunday)

Pyeongana 4th Sunday, 2pm.

Salvation Army

Monday JAM

3-5pm every Monday.
except school holidays.

Sunday JOY

2pm - 3pm every Sunday.
Salvation Army Headquarters.

Break O'Day Uniting Church

The Manse St Helens
Ph: 6376 2405

St Helens 9.00 am
Fingal 11.15 am

Seventh Day Adventist

Hodgeman Street Scamander
Sabbath School 10 am
Divine Service 11 am

St Marys Online Access Centre Opening Hours:

Monday 10am-3pm Thursday 10 am - 3 pm
Tuesday 10 am-4pm Friday 10 am - 3 pm
Wednesday 10am-4 pm Saturday 11 am - 2 pm

Ph: 6372 2005

East Coast Motocross



December 2nd: Grass Track Event

Enquiries: 6376 1380 A.H.

On Air Now!

Vision FM 88.0 at both St. Marys and Fingal.

100% positive music & talk all day long;
connecting faith to life.

Have breakfast with Robbo in the morning on the

National Vision Radio Network.

Phone 1800 007 770.

web www.vision.org.au

Friends of St. Helens History Room & Museum
are pleased to present their

Trash or Treasure

Saturday 10th November 2007

10 am — 4 pm

St. Helens Memorial Hall

Entry \$ 2

Valuations: \$ 5 per item

**Come along with your trash or treasure and
have your pieces professionally valued.**

**An array of local collections will be on
display for your viewing pleasure.**

**A range of old local photographs from the
St. Helens History Room collection will be on
show for help with identification.**

**There will be a historical mystery item to test
your knowledge, raffles, so come along and
have some fun!**

Contact Kay on 6376 3029

or

Kym on 6373 6174

G AZZMAN'S

21 Quail Street, St. Helens, TAS 7216 Phone 03 63762555 Fax 03 63762159

Carpet Walk Carpets

Furniture

Lounge, dining, occasional & office furniture

Manchester

Sheet sets, quilts, pillows & towels + much more

Bedding

Sleepmaker ensembles, plus quality bedroom set's

Blinds

Verticals, venetians, roman, sunscreen, hollands

call for a free measure & quote

Electrical

PC, Xbox360, ps2, ps3, psp and pc games & consoles

mp3 players, Lcd tvs, dvd players

Come in and ask how we can heat your house with brands like Fujitsu heat pumps, ixl, Atlantic heaters, Dimplex and sunbeam to name a few

Fridges, ovens, washing machines we have it all

Timber flooring

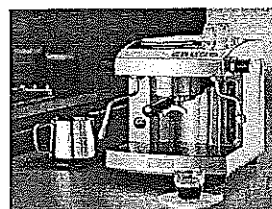
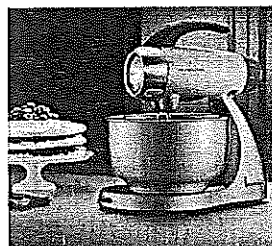
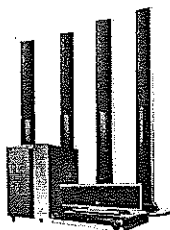
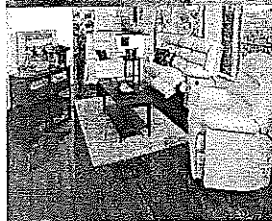
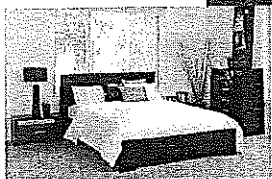
Vinyls

Carpets

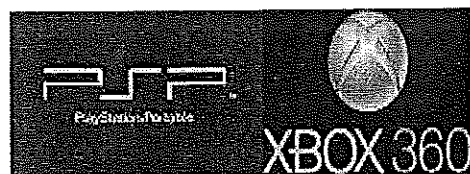
Rugs

All your floor covering needs under one roof

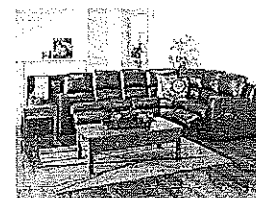
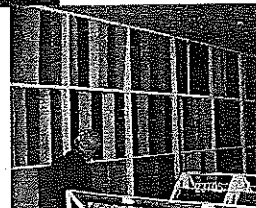
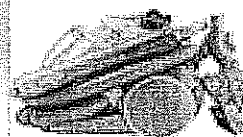
carpetwalk@intas.net.au



FUJITSU



JVC



Sleepmaker



**CONFIRMED: ½ MILLION TONNES OF OLD GROWTH WOODCHIP EXPORTS
TO CONTINUE DESPITE PULP MILL**

Wood Supply Deal Spells Death-Knell for North East Forests

Tim Morris MHA

Greens Opposition Native Forests Spokesperson

The Tasmanian Greens today have slammed as 'unacceptable' confirmation that Gunns will still export half a million tonnes of public old growth forests as woodchips, which will be additional to the 2.8 million tonnes of pulp wood to be sourced from the state's native forests for the proposed pulp mill as disclosed in the release of the draft wood supply agreement between Forestry Tasmania and Gunns Pty Ltd.

Greens Shadow Native Forests spokesperson Tim Morris MHA said that the industry's justification that native forest timber is to be cheaper than plantation wood per tonne, because it yields less pulp actually reveals the lunacy of allowing the State's unique native forest estate to be used to prop up the pulp mill proposal.

Mr Morris also said that the draft wood supply pricing arrangements have confirmed Greens' warnings that it will be the iconic high conservation value forests in the north and north east, including the Great Western Tiers, Blue Tier, and North East Highlands, that will be exploited by Gunns to feed the mill to minimise the transport freight costs associated with bringing in native feedstock from further afield.

"The report in a national paper that Gunns intend to continue exporting at least 500,000 tonnes of old growth forests per annum even should the mill go ahead, is an important fact that was not mentioned in Forestry Tasmania's wood supply media release, and strangely enough, the Premier's media statement also failed to provide this information," Mr Morris said.^[1]

"This exposes the empty rhetoric of both the proponent and the Lennon government that the mill was about down-stream processing and value adding our timber resource," Mr Morris said.

"There we have it, no end to native forest woodchip exports shows once and for all that the so-called down-stream processing purpose of the proposed pulp mill is a sham."

"Vague reported projections by Forestry Tasmania that old growth woodchip exports will continue until 2016, then maybe end by 2026, is not a reflection of a planned phase out and transition, but is more of a reflection of when the accessible old growth runs out."

"It is madness in this era of growing concern over climate change and shrinking fresh water supplies to allow the continued logging of our high conservation value native forests, let alone to then sell those forests for virtually half the price per tonne of plantation timber on the grounds that the native timber provides less pulp – getting the native forest half of the pulp feedstock at a discount price clearly only benefits Gunns, and not the taxpayer to whom the state asset belongs."

"This is going to have horrific ramifications for the iconic north and north east forests of the Blue Tier, the North East Highlands, Reedy Marsh, the Great Western Tiers, and the proposed extensions to the Ben Lomond national park, as not only will it be cheaper for Gunns to buy native forest timber, it is going to be cheaper to buy the closest native forest timber thanks to this deal agreed to by Forestry Tasmania."

"These forests obviously have more value to the community left standing."

"This madness ensures that there is no incentive to get out of the native forests, despite it being the less desirable pulp feedstock option, as the pricing arrangements clearly undercut the current established plantation industry."

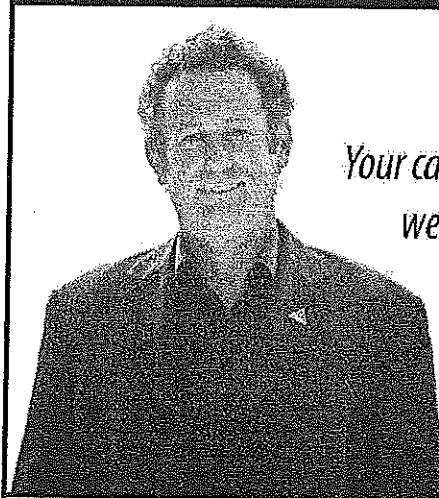
"Any sane economic manager of a unique asset, such as Tasmania's high value conservation forests, would evaluate the fact that the timber produces less usable pulp than plantation resources therefore it won't get the same price, that the proponent will avoid long transport freight costs, and so overall there will be much less return to Forestry Tasmania and the taxpayer; so no, access to native forests is not an option and we will only put the plantation resource on the negotiating table."

"But the draft wood supply agreement shows that Forestry Tasmania has sold out our forests, and sold out the community," Mr Morris said.

Mr Morris also said that while it is a welcome breakthrough for the draft wood supply agreement financial figures to be released, he has called on Forestry Tasmania to guarantee the full and public release of the consolidated Wood Supply agreement with Gunns, which is expected to be finalised over the next month or two.

Tim Morris MHA

Tasmanian Greens Member for Lyons



*Your call is always
welcome.*

Address: 33 Burnett St, New Norfolk 7140

Phone: (03) 6261 8048

Fax: (03) 6261 8047

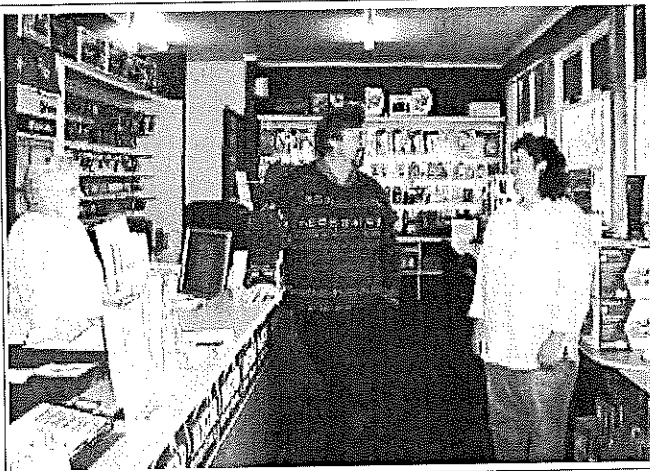
E-mail: greens@parliament.tas.gov.au

www.tas.greens.org.au

Authorised by Tim Morris MHA, Parliament House, Hobart 7000.



NORTH EAST COMPUTERS Pty Ltd
 Established 1995 ABN 44 074 123 425
3/34 Quail St Ph: 6376 2445
St Helens Fax: 6376 2447
 Email: sales@necomputers.com.au
 www.necomputers.com.au



Disaster Recovery & Service Contracts
-We make it work properly -
 Come and see our extensive range of computers,
 printers, scanners and office equipment.
 Get on the internet or buy a mobile phone.

Ph: Peter, Shan, Daryl: free quotes, friendly advice.
 Bus. Hrs:

Mon, Tue & Fri 9am to 5pm (2 Techs available)
Wed & Thurs 9am to 3pm Sat 9am to 12pm

Janeil's
PROPERTY
MAINTENANCE
HANDY
MAAN
AFFORDABLE!
 *EXPERIENCED *POLICE CLEARED * RELIABLE
0429 340 214
 SENIOR DISCOUNTS **FREE QUOTES**

Fax: 03 63811490 Email: jpm@eon.net.au



GIFT VOUCHERS
AVAILABLE!

**FUNDS FOR ST HELENS ATHLETIC CLUB
 CYCLE TRACK**

Senator Guy Barnett has announced approval for \$23,454 to assist the St Helens Athletic Club to resurface its cycle track.

The money has been made available under the Australian Government's Regional Partnerships Program. "Cycle racing is considered a valued component of Tasmanian sporting culture and St Helens has a cycling track which hosts cycling events, including a stage of the state wide carnival circuit," Senator Barnett said.

"The carnival event attracts at least \$40,000 for the St Helens economy, while the surface of the track is currently in poor condition," he said.

The Sports Carnival Association of Tasmania had indicated that it needs the track to be upgraded so that St Helens can continue to participate in the State wide circuit. The event is a great boost to the St Helens economy.

"This project will resurface the deteriorating cycling track to provide an improved and safe surface for racing," Senator Barnett said.

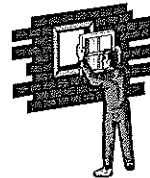
"Regional Partnerships funding will be used towards materials and labour to resurface the track," he said. The total cost to resurface the track is estimated to cost \$38,666.

Happy Birthday to our Mother, Grandmother, and Great Grandmother, Maisie Finney, (Royle) who turns 93 on November 3, 2007. May you stay well and enjoy much more happiness. Love from Judy and family.

EAST COAST GLASS

Falmouth Ph: 6372 5361

- ▶ Glass repairs
- ▶ Shower screens
- ▶ Wardrobe doors
- ▶ Double glazing
- ▶ Aluminium windows
- ▶ Security doors



Locally owned and servicing
 the East Coast.

Call David and Anne Cannon
 for prompt and reliable service.

Dick Adams MP

Federal Member for Lyons



DICK ADAMS

YOUR VOICE FOR A STRONG FUTURE

Member and Authorized by the Electoral Commission, 219/219a Ave, Exmouth, Tas 7209



Children's Week 2007

As part of our celebrations for children's week
we would like to invite you to

St Marys Child Care Centre
for a morning of free fun activities

Date: Friday 26th October (tomorrow)

From 9.30 - 12pm

morning tea provided at 10.30 am

children of all ages welcome

more information tel:
Tanya 6372 2187

The Green Man and The Lady of the Flowers

Request the pleasure of your company

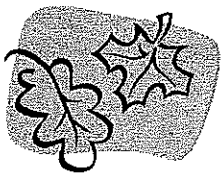
SUNDAY NOVEMBER 4, 2007 FOR 'PANCAKES ON THE GREEN' 10AM TIL NOON

Followed by

GARDEN AND GALLERY TOUR OR GUIDED BUSH WALK FROM 1PM

Departing from Faulkners Green, St Marys

For more info please phone 0438 571 291



St Marys Community Garden

There will be a working bee on Saturday 27 October
10.30-12pm

Where: St Marys District High School
(usual working bee last Saturday of every month)

Is your garden too small to have a vegie bed or fruit trees, don't have the skills or the possums get in? Then think about coming along to the community garden. No joining fees or time commitments and you get great produce.
Children very welcome to come along

any interested people wishing to attend are very welcome at the working bees-
we are hoping to plant spring seeds, and mulch.
(Donations of old newspapers welcome - drop them in on Saturday morning)

The community garden is an organic space open to all members of the
Break O'Day Area.

More information tel: Tanya 6327 2534

October/November 2007

Mon	Tue	Wed	Thu	Fri
		24th October ☉ School Newsletter ☉ Australian Business Week ☉ A.M.C. Boat Challenge	25th October ☉ 2/3 Sleepover	26th October ☉ Inter-high Golf
29th October ☉ School Athletics Carnival	30th October ☉ School Athletics Carnival	31st October ☉ Grade 10 Mock Interviews	1st November ☉ Dramaday	2nd November STUDENT FREE DAY
5th November LONG WEEKEND	6th November	7th November ☉ School Association Meeting 7pm in school Staff Room	8th November	9th November ☉ Grade 11/12 finish
12th November ☉ 11/12 Exams ☉ ENE Athletics	13th November ☉ Country Gold Cricket	14th November ☉ Fingal/Bicheno Transition to St Marys day. ☉ Country Gold Cricket ☉ Next Newsletter	15th November ☉ Inter-High Athletics	16th November

2007 End of Year Magazine

If you haven't already,
Now is the time to order your
End of year Magazine for 2007.

@ \$22.00 each

You can place your order at the school office
or phone 6372 3900.

SCHOOL DENTAL SERVICE

Next at St Marys:

- ☉ Wednesday 31st October
- ☉ Thursday 1st November
- ☉ Friday 2nd November
- ☉ Wednesday 14th November
- ☉ Thursday 15th November
- ☉ Friday 16th November

Please feel free to contact them regarding your child's dental health on the numbers below:

St Marys Dental Unit 6372 2488
 St Helens Dental Unit 6376 5208
 Kelham Street Dental Unit 6336 4100

Australian Business Week



bike track



A group of very enthusiastic Year 9/10 students signed up for a Term 3 short course aimed at constructing a Kindergarten bike track in the area adjoining the main Kindergarten building.

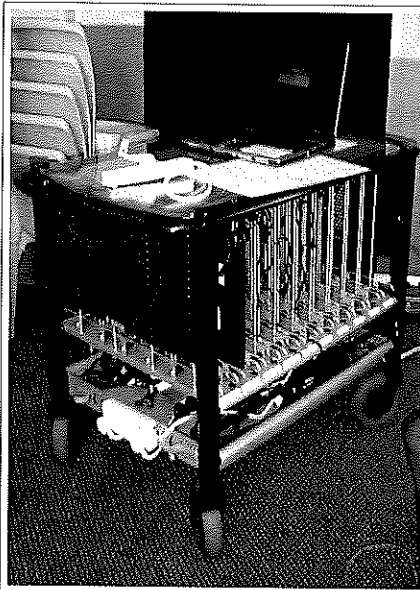
The focus of the project is to construct a bike track that supports both recreation and an understanding of basic road rules and sign recognition for our younger students.

After much careful planning and lively debate a final plan was arrived at. The area will incorporate a bike pathway, soft fall with trees being added for shade. So far the group has realised the joys of:

- Driving stakes into rock hard ground
- Working with pine that hasn't been raked properly
- Having more supervisors than workers.

It's early days but so far we've had lots of fun, developed a few skills and all things being equal we should have the official opening before the end of the term.

Bike track team



New Laptops in 9/10 area

As you may well be aware, we have recently purchased a bank of laptops for the upper secondary area of the school. This is a trial program which utilises our upgraded wireless network. Should the trial be successful, we would hope to roll out to all sectors. The laptops are for use as either whole class groups or for students to use on an individual basis.

Prior to their first use, students were reminded of their obligations when using the new technology. These included:

- The laptops are for use in room 12,13 and the art room only
- They are to be used under direct teacher supervision

That it is a trial program which will be reviewed at the end of the year.

It is worth noting, that as with all property of the school, parents will be invoiced for damage which results from misuse or carelessness. Please feel free to come on in and have a look at the laptops in action.

Matt Bennell

Sports Grant

Mrs Heather Butler presented a cheque for \$1050.00 to our school, on behalf of the Government, to help subsidise our secondary students who play football and netball in the Northern High Schools Sports roster.

Our students travel to Launceston fortnightly and play against Launceston and surrounding schools.

Our participation in the roster has been highly successful with all teams performing well. Students love the competition and their self esteem, skills and comradeship have developed significantly.

We thank the Government for their support and in helping rural schools to participate in quality programs.



Heather Butler (MHA Centre) with Reece Maher, Ned Hyland, Jemma Davern and Elise Wright

ST MARYS COMMUNITY HEALTH CENTRE

DOCTORS on ROSTER

Dr. OTTOSEN 25/10/07– 8/11/07
Dr. REECKMAN 29/10/07– 1/11/07

AFTER HOURS SERVICE

PLEASE PHONE GP ASSIST ON 1300 780 011
 AMBULANCE 1800 008 008 or
 EMERGENCY 000

COMMUNITY HEALTH CENTRE 6372 2111
BEFORE PRESENTING AFTER HOURS.

St Marys Community Health Centre

GP Surgery Hours:

8:50am-12:30pm

12:30pm-1:30pm LUNCH

Please do not phone during lunchtime as appointments
 can not be taken by the nursing staff
 1:30pm-5:00pm

SCRIPTS AND DOCTORS APPOINTMENTS

Please ensure doctors appointments are booked **prior** to
 your medication/s running out or **in advance** if you are
 attending this practise regularly. Patients can not request
 scripts over the phone.

PLEASE BE PATIENT

Please be aware that **waiting periods can apply.**
Phoning in advance may save you a wait. Please
be patient, we are doing our very best and your
 cooperation is appreciated. Everyone's health is
 important to us. — K. O'Shea DON

MENZIES CENTRE & ARTHRITIS TASMANIA PRESENT

BONE DENSITY TESTING

Do you have arthritis or a family history of arthritis?
 Have you ever had your bone density tested?

Why not come along and try this no invasive procedure and
 have your bone density tested.

Heather Donaldson from Arthritis Tasmania will be in St
 Marys from 2pm-4pm on Thursday 1st November conducted
 these tests. All that is required is 7 minutes of your time
 \$15.00 and a bare foot!

If you are interested in having your bone density tested then
 please phone Hayley on 6372 2111 to book an appointment
 as they are filling very fast and places are limited.

Time: Appointment are being taken between

2-4pm And the test takes 7 minutes

When: Thursday 1st November 2007

Where: St Marys CHC– Day Room

Cost: \$15/ scan

Take the opportunity to take this test HERE IN ST MARYS.

Tasmanian Regional Arts Present:

22 Oct– 12 Nov 'CLOSE KNIT'

Beaconsfield Community Scarf Project
 Open 9am-5pm daily at the Health Centre

WHAT'S ON AT THE CENTRE

- 25 Oct **Centacare**, Ann in Day Room. 11am-2pm
- 26 Oct **Diabetic Educator & Dietician Clinic**
 with Pat and Jacqui phone 6372 2111 for
 bookings
- 30 Oct **Jobfind**, Ambulance Training Room
 9:30am-4:00pm
- 1 Nov **Centacare**, Ann in Day Room
- 1 Nov **Bone Density Scans**, Heather Donaldson
 2pm-4pm in Day Room. Please phone
 Hayley on 6372 2111 for appointments as
 places are limited.
- 5 Nov **Relationships Australia**, 10:00am-4pm.
 Lyn Marie phone 1300 364 277 for
 appointments.
- 5 Nov **Hospital Auxiliary** meeting in the Day
 Room. 2pm-4pm
- 8 Nov **Centacare**, Ann in Day Room
- 9 Nov **Relationships Australia**, 10am-4pm Lyn
 Marie phone 1300 364 277 for
 appointments

WORLD DIABETES DAY

14th November 2007

World Diabetes Day is just around the corner. If you have
 Diabetes or know some one who does why not come along to
 the St Marys Community Health Centre for a check up.

- Take away information available
- Blood Sugar Level Testing (BSL's) done

If you are concerned that you might have diabetes have your
 BSL's checked or book in for a Glucose Tolerance Test.
 Appointments are made through the reception area of the
 Health Centre.

FREE Health Checks & A Boys Night for the Ladies!

A Men's Health Night for the Ladies is a presentation
 not to be missed. For women who care about their
 partners, sons and friends health.

Where: Scamander Sports Complex

When: Tuesday 30th October 2007

Time: 7:00pm-9:00pm

Cost: FREE

RSVP: Essential on 6376 5242

FREE HEALTH SCREENING will also be available on:

- Tues 30th Nov– St Helens Veterans Info &
 Support Centre. 10am– 12 noon & 1pm- 3pm.
- Wed 31st Oct– St Marys Memorial Hall. 1pm-4pm

More info please call Fiona Watts on 6376 5242

ST MARYS COMMUNITY HEALTH CENTRE

Tasmanian Regional Arts Presents:

Tasmanian Tour 2007

'CLOSE KNIT'



Beaconsfield Community Scarf Project

The St Marys Community Health Centre

22nd Oct- 12th Nov

9am-5pm daily

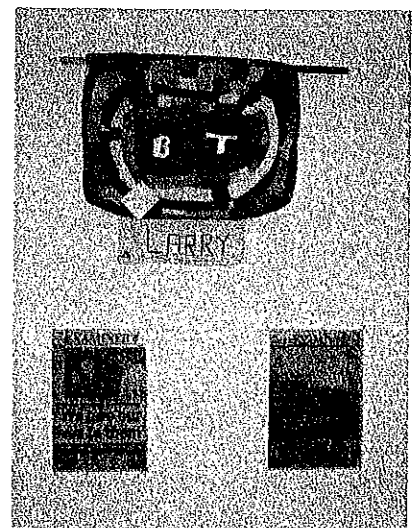
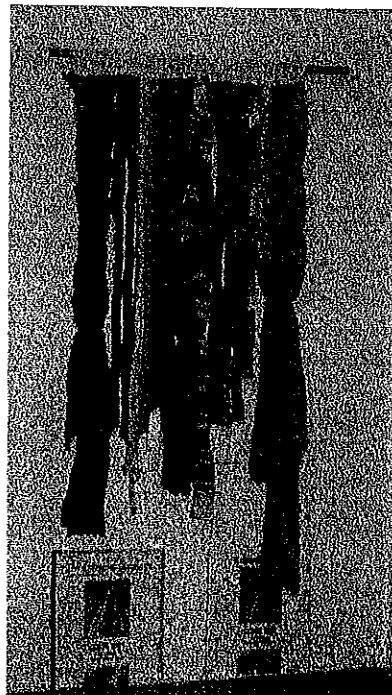
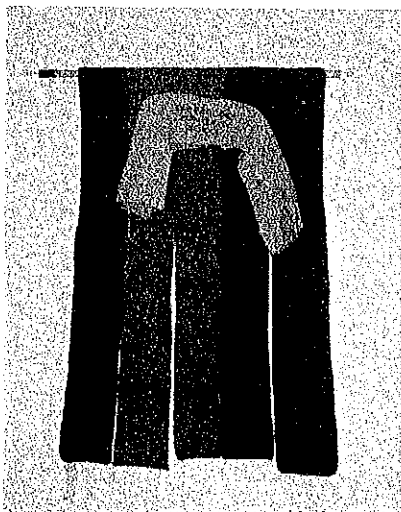
Scamander Beach Resort

14th Nov- 7th Dec

9am-7pm daily

Please take the time to come in and see this wonderful display.

All enquiries please phone:
Shan Williams 6372 2111



Information of this page was supplied by:

St Marys Community Health Centre, Gardiners Creek, Road, St Marys, TASMANIA. 7215

Grassy Bottom Regional Arts Rave

Apart from the fact that it was zero degrees in the kitchen recently, the quince tree has spouted flowers, and spring seems to be well and truly underway. The new Maypole is now in place on the site, thanks to the Aurora crew and the Faulkner's who have so graciously allowed us to use their block for the event. This will be the ninth Maypole, and as this is St Marys Sesquicentennial year, it is a little bit special!

The 'Arts Festival in a Teacup' Workshop Schedule is out now with a very nice line-up of workshops on offer for all ages. Booking for the adult workshops are essential, as we need to cover costs in order to hold the workshops, so please book soon! Watch out for Joanne Wild's 'Hooked Rug Making' workshop on October 27, (this Saturday). Joanne lives at Elizabeth Town, and has a website where you can have a look at her work: www.lasting-impressions.com.au Some of you may have attended a Screen Printing Workshop with Joanne a few years ago, in which case you will know that she is a highly skilled arts worker and very good at teaching what she knows.

Lynn Piscatelli, a local artist, will be holding her workshop TODAY. If you went to see 'Living Artists Week' exhibition at the e.ScApe Café Gallery, you probably noticed Lynn's work, a painting of a child playing in the little waves at the beach, which would have spoken a thousand words easily.

Another local treasure who will be giving a workshop is Robina Balzer, who will be introducing many and varied techniques of fabric painting in the 'Paint a Sarong for Summer' workshop on Thursday Nov. 1st. Robina's Workshops are always lots of fun, and there isn't much she doesn't know about textiles—plus you end up with a one of a kind sarong that will see you through many summers. Have a look at the schedule and book now—have a go and have some fun.

Kid's 'After School Playshops' will be held 'on the green' from 3 til 5.30 Monday through Thursday. Afternoon tea provided, courtesy of the Healthy House Project at St Helens, plus activities of all sorts. Make a clay sculpture and enter it in the Junior Sculpture Award to win cool prizes. Learn to juggle or make felt, try painting, Shadow Puppets, Drumming, Flag Making, Music and Games. Only \$3!!!

As Friday the 2nd Nov is a student free day at St Marys School, we are offering a 'Puppet Making Workshop' in the Town Hall from 10 til 3pm. We will be making Bush Marionettes, (from sustainable harvested local timber) This is suitable for all ages (even grown-ups) but under 7's should bring a helper along.

The Maypole ArtPrize deadline has arrived—works should have been delivered to the e.ScApe Café Gallery by the 16th October, with the exhibition running from October 20th until November 3rd (Maypole Day) Please call in at the Gallery to 'View and Vote'.

We will be having our last Friday Twilight Market Nov. 2nd from 3—7pm. We will be serving food and drinks from 5pm, with music and a Shadow show. Any market stall holders who would like to have a stall on Saturday the 3rd November at the Maypole site as well, are welcome to do so.

The Cake Bake and Flower Arrangement Competition entry blanks are available now, and at the rate we're going, the Maypole Day will be here before we know it—looking forward to seeing you there!

Grassy Bottom Regional Arts will be doing a door knock in St Marys and Cornwall soon to let everyone know what we are up to, and get your ideas about what you would like to see happening on the local Arts front. As many will know, we are waiting with baited breath to find out if our Grant Application to the Tas Community Fund to buy the garage at 2 Story Street for an Artspace and Youth Annexe is successful. Thank you to everyone who signed a support letter to go with our application. Eo.

Maypole Day Cake Bake Competition

Entry Blank:

Name: _____

Address: _____

Phone: _____

Entry fee: \$4/\$2 junior
Cakes to be delivered
to the Maypole site
between 12 and 2 pm
Saturday November 3, 2007

Best Taste \$50
Best Look \$50
Junior \$20



Judging at 2pm!

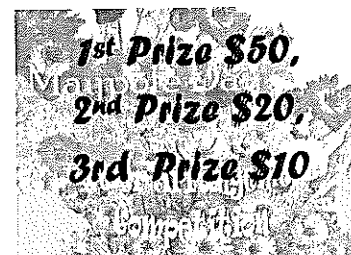
Flower Arranging Competition Entry Form

Name: _____

Address _____

Phone: _____

Entry fee \$3
Entries to be delivered to the Maypole site
Between 12 and 2 pm
Saturday November 3, 2007



Judging at 2 pm!

SPORTS CENTRE NEWS. KACKHANDER.

First to bowls, and what a positive start to the defense of our pennant, with an emphatic win at home to Scamander by 33 shots, and then last week a close but 3 rink win at Swansea.

Only a few years ago a win at Swansea was unthinkable, and many, many times we came home with our tail between our legs. Over the past two years we have found we can actually win down there. At the moment we sit on top of the ladder with two home games against even St Helens teams to take on.

We are still on the lookout for new or prospective bowlers, so if you are at all interested, just contact the club or come along about 5pm on Thursday nights practice. You will be very welcome indeed.

Another great aspect of last weekend was to see a St Marys Ladies team playing a real game, after perhaps 7 – 8 years. It was incredible. Not only did they play, but they also put the wind up the opposition as well, and both rinks were very competitive. We expect that with a bit more experience under their belts that they will very quickly become an excellent team. Congratulations to all of them.

Thanks so much to all our helpers on October 12 and 13th to get our golf greens done. Again this was an incredible effort to get all those cores off and them fully seeded and sanded on the Sunday. Thanks also to Jack and Damo for the construction work, and Jack, Damo, Chris, Trev, and the other helpers who have completed the other clubhouse jobs in the past few days. Sorry to anyone I've forgotten.

To all those who put the finishing sprinkler heads in last week thanks also. Finally it's done and will be great from now on. All going well the new pump will be wired in this weekend. That's amazing.

To all our golfers, thank you for your patience and understanding about our greens. As stated before, better a bit of pain now than having a summer without our greens up to standard.

Good luck to our girls at the Barclay Shield soon. Give it to them, and bring back the trophy.

Subs are still dribbling in but there are still a few to be paid.

The 'acquisition' previously mentioned is our new fairway mower. A real mower this time. Thanks to all our committee who did a lot of work to obtain the necessary funding. Thanks also to the St Marys Pacing Club, (great effort everyone, for your incredible assistance), and Break O'Day Council and our own Sub-committees. The machine is a must for the long term development of the club.

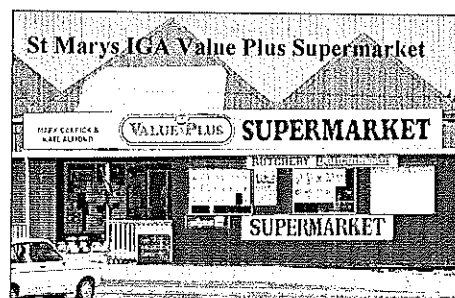
One of our long established members has been considered for Life Membership of the club, for all his amazing contributions to the Sports Centre, for 35 or more years.

This will be officially ratified at the 2008 AGM, if the member concerned allows us to bestow this rare honour on him.

Finally to Malahide Golf Club and most particularly the Street family. Our Club sends our condolences to you all on the recent loss of dear old Harry.

He was a true gentleman, a great friend and a damn fine golfer, amongst other sports. We will all miss him.

Anyway, until next time, good hitting and rolling.



38 Main Street St Marys
Mark Kate
Phone/Fax 6372 2240
Butcher Ph: 6372 2274
Mon – Fri 8am – 6pm
Sat 8am 12 noon

In-store butchery

This week

Rump steak	\$10.99 kg
Topside roast	\$ 7.99 kg
Pandani Silverside	\$ 6.99 kg

Next week

Porterhouse steak	\$15.99 kg
1st Grade mince	\$ 8.99 kg
Lamb BBQ chops	\$ 7.99 kg
Scotch fillet	\$23.99 kg



Call in and see Matthew's new hair cut.

AGM

ST MARYS DISTRICT HOSPITAL
SUPPORT ASSOCIATION INC.

WILL BE HOLDING THEIR
AGM
ON THURSDAY, NOVEMBER 1,
AT 7.30PM
IN THE DAY ROOM
AT THE
STMARYS COMMUNITY
HEALTH CENTRE.
ALL WELCOME.

LEN MILES. PRESIDENT.