

The Valley & East Coast Voice

Volume 41 No 6
Thursday, August 14, 2008

Est. 1968
50 cents

St Marys Fire and Emergency Services Facility.

Photos and story by Michael Aulich.

As can be seen the new building is progressing well and will hopefully be completed and in use by Christmas.

Last Friday, approximately 60 people gathered opposite the new building on the nature strip, for the official building launch and speeches followed by a morning tea in the local church, which was very well catered for by the St Marys Hotel.

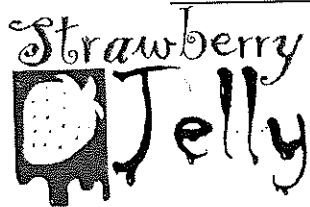
Prior to the morning tea, speeches were delivered by Andrew Comer (Tas Fire Service Northern Regional, Chief Officer), Mike Brown (Tas Fire Service Acting Chief Officer) and MHA David Llewellyn.

Dignitaries from Tas Ambulance, SES, Police, and Break O'Day Council attended the launch along with Michael Polley, the Commissioner of Police, Jack Johnston, and guests from the local emergency services, and general public. It was announced here that Innis building contractors were the successful contractors for the construction of the new building.

The original concept of a new Fire Station was put in place prior to 2002, when the Tas Fire Service District Officer at the time, Rodney Read, along with the local brigade could see the need for a new fire station.

This concept grew to what it is today, a multi agency facility which will house the Tas Fire Service, Tas Ambulance and the SES, with three double length engine bays for response vehicles, office space for each service, accommodation and a meeting/training room.

Funding for the project has come from the Tasmanian Fire Service, with assistance from Tas Ambulance, SES, Break O'Day Council and Affected Area Recovery Committee.



Check out the latest shop
to open in St Marys:

'STRAWBERRY JELLY'

As well as a new name, (formerly Ratha B'zar) it's relocated to the old Health & Beauty.

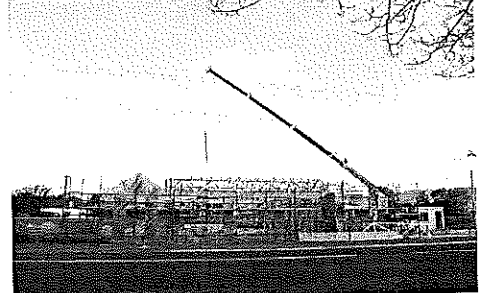
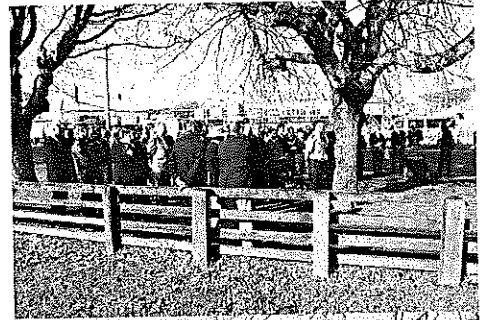
Just take a look through the window and you'll be intrigued. Eye-catching gifts literally dripping from the displays. Kelly said her dream of having her own shop wouldn't have been possible without the fantastic support and encouragement of family and friends.

"It all happened so quickly—from Elaine (Purple Possum) suggesting the move 2 weeks ago, to today, has been a whirlwind".

Kelly would like to also say a 'HUGE' thank you to the following people. Tessa, for her enthusiasm and motivation, the landlords, for their generosity, Guy for his valuable skills and helpfulness, Anthony for his innovative design and sign-writing, Liz for her willingness to supply 'Strawberry Fudge', and last but not least all past, present and future customers.

Kelly explains the meaning behind the new name. "It was a name I was given at school—Kelly, Kelly, Strawberry Jelly. It was either that or 'Smelly Kelly!'" Right choice!

So pop in and visit Kelly, and be amazed at the ever changing range of gifts, craft and clothing available at 'Strawberry Jelly'.



*l/r: David Llewellyn MHA,
Mike Brown TFS Acting Chief Officer,
Andrew Comer TFS Northern Regional Chief Officer.*

Please note: Deadline for articles to be included in the next Valley Voice is: 5 pm Tuesday, August 26, 2008.
New email address: judith.spilsbury@bigpond.com

Community news

St Marys Hospital Auxiliary meets the first Monday of every month at 2pm at the **St Marys Community Health Centre**.

The Break O'Day Woodcraft Guild Inc. meets the last Saturday of the month at 2pm at the goods shed behind the **St Marys Railway Station**.

Grassy Bottom Regional Arts are holding General meetings on the first Tuesday of every month at 2 Story St, St Marys at 7pm. Come along to share your creative ideas and help Grassy Bottom maintain an artistic culture in our community.

The Tasmanian Lymphoedema Centre Inc., holds meetings every 3rd Monday of the month at 10 am at the **St Marys Community Health Centre**.

St Marys Ladies Midweek Tennis 9.30am each wed. Need new players - of any standard-beginners welcome-childminding included - lovely safe place to bring toddlers while you play. **Ring Annette-6372 2224.**

St Marys Playgroup meets each Friday 10ish at the kindergarten. All preschool aged kids welcome to bring a carer/parent/granny/pa for a play and morning tea. Very chilled relaxed group of all ages - we love new members. **Contact Jane 6372 5060.**

WOMBAT WALK WEEDERS meet every Wednesday 9am to 12 Noon (weather permitting) at **St Marys Musical Playground** area to plant and maintain the rivulet park and flower bank - anyone interested in joining us - please come along and meet our group. **Contact - Robina 6372 2022.**

Break O'Day Wine & Food Appreciation Society meets once a month on the last Sunday. **Ph: Jan 6376 1661 or Leanne Ph: 6372 5291.**

The Scamander and Beaumaris Community Development Association meets at 7 pm at the Fire Station Scamander every third Wednesday of the month. New members are most welcome.

St. Patricks Head & Esk Valley Historical Society meets on the third Sunday of every month at **St. Marys History & Gifts** (the old railway station) at 2.30 pm. Meetings are informal and fun and new members are needed. Please contact **Barry Aulich** on **6372 5752** or **Jim Haas** on **6372 2127.**

The Falmouth Community centre would like to advise members and the community that the new contact for bookings of club facilities is **Ben Morgan**. Ben can be contacted on **03 6372 5604.**

Suncoast Singers meet every Friday at 10am in the Catholic Hall - Cecilia Street St Helens. New singers always welcome....If you can yawn - you can sing. Phone **Mary-Anne Wadsworth 6376 2969.**

NEWS FROM GONE RUSTIC:

PLAYTIME! FUSIN' FUN - use an iron to print on fabric - the effect is like screen printing, but much easier! Date: Saturday, 6th September (9-12). *Bookings essential*; please call in to see finished samples and collect your materials list. Cost: \$10 plus materials.

QUILTING BEE - an opportunity to get together once a month and *make quilts for those less fortunate*, locally and further afield. *Trade table of fabrics* at every session, so bring your spare cash (funds are for purchase of wadding). When: Wednesday 20th August (and every 4th Wednesday) at *Rustic Ragamuffins* stitching group, from 7-9 pm. Cost: \$5, plus spending money for fabric; also please bring your sewing supplies.

GUEST EXHIBITORS - St. Helens quilter, *Barbara Mellor*, will be exhibiting her exotic quilts (made from Japanese fabrics), antique kimonos and other items during August / September. *Exhibition launch:* 12 noon, 20th August. Cost: \$5 (includes light lunch and refreshments). *Please book for catering purposes.*

ANNUAL MEMBERSHIP - this fell due on 1st July. Cost is still only \$15, which includes *bi-monthly newsletters, free pattern and recipe, and 10 % off fees for classes.* Ask Rita for an application form!

FABRIC PAINTING WORKSHOP with **Cindy Watkins (Deep Peace Studio)** -includes stencilling, marbling, inclusions, heliography, salt texturing, air exclusion. We need 6-8 people to run a 1-day workshop. *Are you interested? What day would suit you?* Cost: \$50 (dep. \$15; BYO fabric and cut lunch; tea and coffee provided). Let Rita know ASAP

If you are interested in any of the above items, please contact Rita Summers on 6372 2724 (Mon-Fri, 9-5) or AH on 0417027424, or drop in to Gone Rustic, 37 Main Street, St. Marys.

Congratulations to Kelly and Rod.

Your new premises not only looks inviting
but enchanting.

We all wish you every success.
From your friends in St Marys.

Beat the price rise! Find your dream home, garage, shed, stables and more by visiting your local Wide Span Sheds agents for a free catalogue and quote. (Mon - Fri 9 - 5) See Rita and Ian Summers at Gone Rustic, 37 Main Street, St. Marys (03 6372 2724 or 0417 027 424).

GRASSY BOTTOM REGIONAL ARTS

AGM

TO BE HELD

TUESDAY 2ND SEPT 2008 1—3 PM

AT THE SUPPER ROOM

TOWN HALL.

Swap n Go gas cylinders now available from Gone Rustic, 37 Main Street, St Marys or call 0417 027 424 for opening hours.


ST MARYS TENNIS CLUB

AGM

THURSDAY 28TH AUGUST 7.30PM

Classifieds

FOR SALE

Solid pine bunks bed with mattresses. \$70. ono. Ph: 6372 2443.

Single bed base and mattress. Good cond. \$50. ono.

12 various sized window shutters. Best offer.

Heavy duty timber work bench. \$100. Ph: 6372 2248.

2 wardrobes & single bed with foam mattress. Make an offer.

Ph: 6372 2283.

PS2 Games

Call of Duty - Finest Hour (MA 15+) \$15.

007 Everything or Nothing \$15. (James Bond)

World Championship Poker 2 \$15.

MX vs ATV Unleashed \$20

Grand Theft Auto - San Andreas

(MA15+) \$20.

Or buy all for \$75.

All Games are in perfect working order, and come with the instruction manual.

Text/Ring Bryn after hours on
0448787150.

Queen size slatted bed & mattress. \$250. Ph 6372 2722.

18" caravan, sleeps 4, toilet, gas shower and oven, 12 volt pressure pump. \$3000. Ph: 6372 2258 or 0417 344 209.

2 Vertical blinds. 120cm high x 75cm wide. 194cm wide x 123cm high. \$30. Ph: 6372 2426.

Westinghouse fridge-freezer. V.G.C. \$200. ono.

Kelvinator 150lt chest freezer. As new. 6mths old, still under warranty. \$380. ono.

Hoover 5kg top load washing machine. Goes well. \$150.

Double bed & chiro mattress. As new. 6mths old excellent condition. \$700. ono.

Coffee maker hardly used V.G.C. \$100. ono. Ph: 6372 2556

VISCOUNT AERO-LITE
POP TOP CARAVAN
1983 MODEL 13FT PLUS ANNEXE
GOOD CONDITION \$6,500.00 ONO.
PHONE 6372 5485

PACEMAKER
PRO ELECTRIC WALKING MACHINE
AS NEW. HARDLY USED \$700.00
FIRM PHONE 63 25 485.

FOR SALE

Acoustic Guitar. \$120.

Golf clubs & bag (new) \$150. (new alloy driver/Brosnan. Tommy Armour irons & wedge putter)

Wall batts x 2 bags. \$40.

Full Face Bell Moto X helmet & kidney belt. \$40.

20 ltrs indoor/outdoor primer.

20 ltrs satin white indoor. \$90 each.

Clear patio blinds 5 x 2.4 x 2.4 (new) \$100 each.

Landeruiser H/P clutch kit (new) \$500.

(New) **Electric single phase motor,** 4HP with electrics. \$450.

Saw bench -docking saw— (firewood) + 4 x 28" blades & belt PTO. \$200.

4 ltrs paint stripper. \$40.

Ph: 6377 1209.

packing boxes, free, all different sizes - Ph: 6372 2686

Transark easy welder. 140 amps .

Rods, mask hammer \$200.

Phillips 340 Fridge/Freezer.

Top order \$200.

Ph: 6372 2251.

Old style lounge suite. \$80.

George Foreman grill (Lge) \$45.

George Foreman grill (Sml) \$30.

Speed Grill. \$30.

Ronson combination slicer. \$40.

Bookend bed with mattress. \$50.

Ph: 6372 2434.

Fire wood. 1, 2, & 3 tonne loads.

Ph: 0407 944 158.

"Moo-Poo". Finely screened. Any amounts. See Norm. Ph: 6372 2380.

FORD METEOR. 4 cyl. Has some panel damage. Goes well. Suitable for "kids learn to drive" project, or parts. \$150. Ph: 0437 227 123 or 6372 2222.

WANTED

2nd hand bricks or pavers.
Ph: 6372 2684 -Business hours only.

Wood Chipper and 4 tonne truck hire

Turn your
valuable green waste into mulch.
Available St Helens to Coles Bay.
contact Steve:
on 6372 5108 or 0408 301 788



St Marys Association
for Community Development Inc.
ANNUAL GENERAL MEETING
Friday August 29th 2008
at 12.30 pm.
At the Online Centre
23b Main St. St Marys.



St Patricks Head & Esk Valley
Historical Society Inc.
ANNUAL GENERAL MEETING
Sunday August 17th 2008
at 2.30 pm.
At St Marys History & Gifts.
(Railway Station)

HORSES WANTED

Retired pacers, endurance,
stock horses or other quiet,
sensible horses
wanted for trail riding,
lease or view to buy.
Tel 63722059.

WANTED

**Land to graze sheep
in the Break O'Day area.**
Ph: 6372 2762.

WANTED TO BUY

Kennel in good condition, to suit
large dog.
Ph: Amanda 0419 440 946.

WANTED TO BUY

One Lortone Gem Tumbler.
Phone John Mallinson on:
6376 1485.

FOR SALE

**1995 NISSAN PATROL
WAGON.**
2.8 TURBO DIESEL.
**3 MONTHS REGO-
GOODTYRES.** \$12,000. NEG.
PH: 6372 2033 — 0439 722 033

A LITTLE BIT OF HERITAGE: Jim Haas "The Box Brownie"

The art of taking a photo today is as simple as pressing a button on our digital camera. We are blessed in the fact we can take hundreds of photos, take them home, select the ones we like and then we can either have them saved or printed. Indeed, we can even take a photo with our mobile phone.

Our ancestors, too, thought they were made back in the early part of the Twentieth Century when they were introduced to the Box Brownie. It was a revelation in photography that allowed ordinary people to capture in print their special moments with family and friends all by themselves at an affordable price.

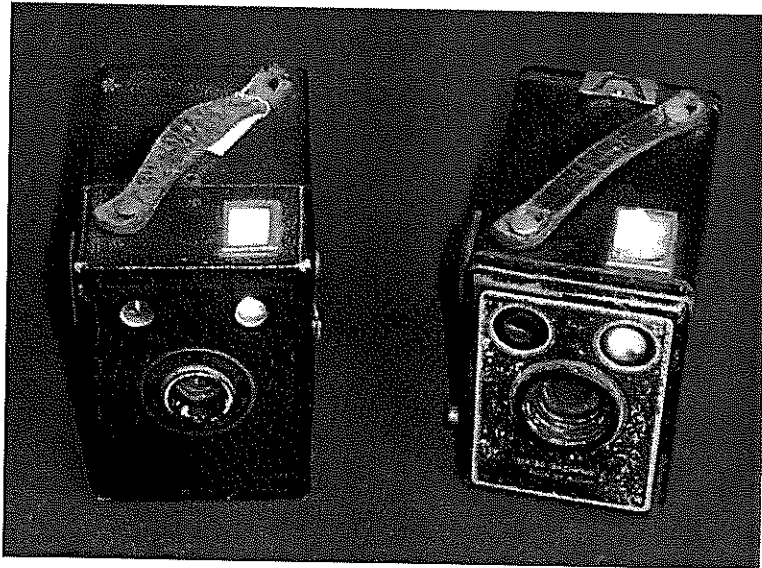
Before the Box Brownie, taking a photo was only possible by using a huge, expensive camera set on a tripod, with the photographer, usually a professional, hiding under a black cover. It was American George Eastman, however, who changed all this when he took an interest in photography in 1874.

Eastman found the process of the times, which required coating a glass plate with a liquid emulsion, extremely awkward. He immediately went about experimenting with British gelatine emulsions and after three years developed a dry photographic plate. He patented it in both the USA and England and in 1880 he formed a photographic business.

By 1888 the Eastman Company was moving ahead in leaps and bounds with the development of a camera that could use roll film, thus allowing the photographer to record multiple images.

On September the 4th 1888 Eastman registered the trademark "Kodak". In choosing the name he said he wanted a name that was short, but strong, and contained his favourite letter "K". It also had to be a name that people were unlikely to mispronounce and not resemble any other company name.

The camera in those days was still rather expensive, however, and Eastman's next move was to bring photography to the masses. In 1900 he introduced a concept designed by Frank Brownell, which soon became known internationally as the "Brownie".



The Brownie soon popularised low cost photography and introduced the idea of the snapshot.

The first Brownie to hit the market in the United States was in February 1900. It was a very basic cardboard box camera with a simple meniscus lens that took a little over two inch square images on 117 roll-film. With its simple controls and initial price of \$1, compared to a minimum \$25 for previous cameras, it was intended to be a camera that everyone could afford as well as operate.

One of the most popular Brownies was the 127, millions of which were sold around the World between 1952 and 1967. The Brownie 127 had a bakelite case and a curved film plane to reduce the impact of deficiencies in the lens.

Thanks to George Eastman and his faith in developing the Box Brownie, most families could now afford their own personal photo albums of their loved ones. Generations later those lasting images on the small black and white photo paper provide us with memories which are priceless.

"You press the button, we do the rest" was the marketing slogan used by the Kodak Company when it first launched the Box Brownie. Today, with Kodak's latest digitals, the slogan would be "You press the button; the camera will do the rest."

SAWMILLING

YOUR TREES -
YOUR PLACE
FOR PORTABLE
SAWMILLING
Ph ROSCO: 6372 2147



ST MARYS NETBALL CLUB

2008 SUPPER AND TROPHY PRESENTATION NIGHT.
DATE: FRI 29TH AUGUST
TIME: 7.00PM
VENUE: ST MARYS SPORTS CENTRE
COULD ALL PLAYERS PLEASE BRING ALONG
A PLATE OF SUPPER. THANK YOU.

Letters to the Editor

Letter to the editor,
Valley Voice,

In this modern world of today, everyone has a right to a choice.

This applies to where you want to live, work, play, dress, drive, ride, walk etc. These choices we make during our life are personal.

It is everyone's right to decide to "go with the flow", or not.

Charles Trollope made his choice on cancer treatment and evidently this choice worked for him.

But, Charles does not have the right to condemn other people's choices that he doesn't agree with, or the wonderful work done by the Cancer Council.

Many have been cured of cancer by "conventional" methods, positive thinking and, maybe? The Rife Machine.

It is everyone's choice to decide what path we will follow if and when cancer rears its ugly head.

Enough is enough Charles, your story has been told over and over and over...It's time to focus on something else please!

Ruth McGiveron,
St Marys.

Dear Editor,

Just after 8am Tuesday morning 12 August, the chain saws started and shortly afterwards one of the giant Macracarpa pine trees fell with a loud crash, near the railway station.

I hope that there was a justification in removing this tree eg: dangerous, and not just a temporary whim of tree carvers, because this tree and its companions are visited by black cockatoos on their way inland.

For decades these trees have provided shade to travelers, and we locals are very fond of them.

Heather Lester,
St Marys.

St Marys Pharmacy

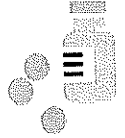
For all your health and wellbeing products

Pharmacist on duty 5 days a week

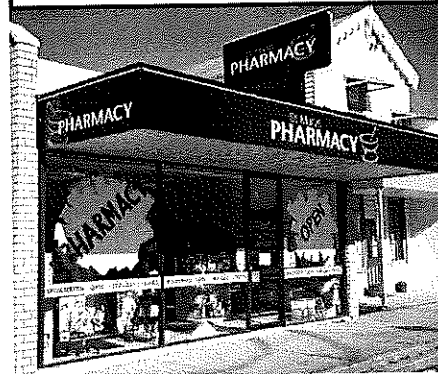
Main Street, St Marys Tas. 7215



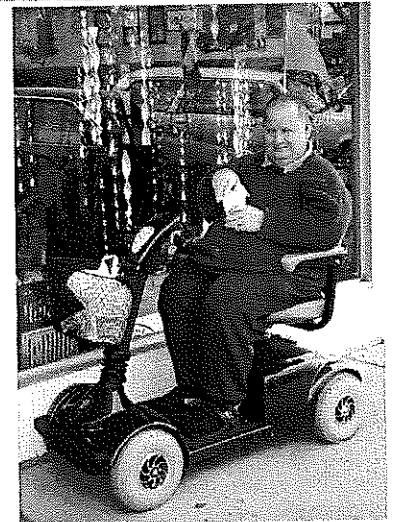
Call in and talk to us about any health problems. Or discuss your medications. Our friendly staff are only too willing to help with any problem.



Phone: 6372 2844 — Fax: 6372 2874



St Marys Pharmacy with its new signage which was completed last week. A nice addition to Main Street.



Seen out and about last week. St Marys resident Trevor Coward, enjoying a coffee and a chat in Main Street.



Neighbourhood watch

CGU Insurance

MEETING DATES NEIGHBOURHOOD WATCH.

AREA 102

SCAMANDER, BEAUMARIS,
UPPER SCAMANDER, FALMOUTH.

WEDNESDAY 8TH OCTOBER. 7.30PM
WEDNESDAY 12 NOVEMBER. 7.30PM

ALL MEETING ARE HELD AT THE HOME OF
MRS SHEILA CHUGG,
2 SCAMANDER AVENUE,
SCAMANDER, 7215.
PHONE: 6372 5406



PROUDLY SPONSORED BY AUSTRALIAN PAPER



East Coast Phone & Communications

- * Telephone & Data cabling
- * Commander Systems
- * Sound System cabling
- * TV Antenna & Tuning
- * Digital Set Top Boxes, supplied & installed where reception available.

PO Box 29,
St Marys 7215
Ph: 6372 2402
Mob: 0409 959 121



John Heron
30 years
experience
ACA Licence

Letter to the Editor

Dear Editor,

I refer to the letter by the President of the East Coast Surf Life saving Club (VV 31 July). I cannot address issues arising from a current Development Application, but I would like to respond to the litany of assertions about myself and to comment on matters on the public record.

Ms Neubecker's very selective attack fails to acknowledge that I am but one of nine Councillors, and that all decisions in matters affecting the ECSLC have been made by a majority of Councillors, after due consideration by them of the facts of the matter.

I am not the Fuehrer. Further, she fails to mention that I moved the initial motion in January 2006 supporting a surf life saving facility in the municipality, and that I seconded the most recent motion in April 2008 consenting to the Club submitting a further application for a development permit—hardly sabotaging the club's efforts. I fully support, and would work hard to achieve, the establishment of a surf life saving facility relevant to the water safety needs of the community and an appropriate and sustainable aquatic emergency response service within the municipality, but I believe the connection made by Ms Neubecker between lives lost at Cosy Corner and Port Sorell and the proposal to establish a storage facility and club house on the foreshore at Scamander was insensitive, inappropriate, and irrelevant.

Ms Neubecker trumpets that *"ECSLC has invested in solutions, not sabotage"*. And yet on 14 March 2008, in response to the decision on 11 March by Council, as owner of the land, as part of the democratic process, giving consent to SSPIG to build the skatepark in accordance with its approved development permit, a Melbourne firm of solicitors wrote to the Scamander Skatepark Interest Group Inc. on instructions from ECSLC, *"should SSPIG take or seek to take any action under Council's decision of 11 March to facilitate or commence any works on the proposed skate park site we are instructed to commence proceedings in the Supreme court of Tasmania seeking injunctive relief to stop such actions... proceedings would be commenced against all members of that organisation personally"*.

Ms Neubecker states *"ECSLC has redesigned the building 3 times to get the balance right"*. Yes it has got bigger, and bigger, and bigger, and every time something else has to be moved out of its way. The first application to Council on 16 January 2006 was for a single storey building with a floor area of 168 m², made on the basis that it may be *"necessary to reposition all or part of the playground"*. It was rejected.

The second application was made on 11 March 2008 for a two storey building with a total area of 280 m², an increase of 67 % over the first design, based on moving the approved skatepark site some 12m to the south. It was approved by Council, but quashed by the Planning Appeals Tribunal. The third application currently before Council, is for a split level building of 362 m², 65% larger than the second design and more than twice the size of the first building, made after the approved skatepark site had been relocated again, this time north of its original site.

Ms Neubecker protests that the adjournment of discussion on the recommendation to lease land to ECSLC at the July meeting of Council was due to "a raft of questions" raised by me. The Mayor postponed the discussion following the questions I raised. Presumably if the questions had been irrelevant, frivolous, or without substance, he would not have postponed the discussion in order to obtain answers. My role as a member of a Planning Authority includes asking questions, not just rubber stamping applications. The questions I asked about the proposed lease are in the minutes of the Council meeting for July 2008 on www.bodc.tas.gov.au, but the first was "where is the map showing the area proposed to be leased", and the second was "what are the terms and conditions of the lease, and how long will the lease be for"? Hardly an "abuse of the democratic process", as characterised by Ms Neubecker.

As the Club has requested Council to *"take on Owner-builder status in relationship to the proposed storage facility and club house on the Scamander foreshore as the Council is the owner of the land of the proposed building site"*, it was relevant to ask why a lease is required if the Club has no interest in building or owning the building. Council would not need a lease to build its own building on its own land.

Ms Neubecker appears confused regarding planning issues such as subdivision and the high water mark in relation to a lease on the foreshore. I refer her to pages 164 and 65-66 of the Planning Scheme, available on Council's website, which relates to whether a lease can be granted on the foreshore, and shows the relevance of subdivision and the high water mark to a lease. The information may cause her to rethink her dismissive and equally unqualified view that my questions are "simply untrue" and "illfounded" or she may be right, but the questions needed to be asked.

The President complains that I have spent hours and hours of work researching legislation and planning scheme standards relevant to this matter. Correct. I have also submitted memos to appropriate staff seeking advice on matters relating to issues arising from various proposals for the Scamander foreshore. That is my responsibility under legislation and under the Councillor Code of Conduct.

Under LUPA (Land use Planning Approvals Act) a Council, in reaching a decision, must conform to the provisions of its own Planning Scheme, and failure to do so renders individual Councillors liable to criminal prosecution.

Under the BOD Councillor Code of Conduct, councillors are required to *"make informed decisions, focusing on the issues, and take all reasonable steps to ensure the information on which decisions are based is factually correct, to ensure that they are fully informed, having adequately researched the issues and policies, strategies and previous decisions of council"*, and to *"act and be seen to act properly and in accordance with the requirements of the law"*.

I have also consulted the websites of Surf Life Saving Australia and various surf clubs to inform myself of the site location requirements of surf lifesaving clubs. These "hours and hours" are an obligation which is part and parcel of being a Councillor, to get it right, not usually a matter for criticism.

Ms Neubecker has asserted that I refer "fondly" to due process. She could also have said that I believe in natural justice, and competence, and due diligence. Without such principles, together with transparency, accountability, communication, the paper trail, and following laid down procedure and process, decisions can be reached on the basis of confusion, influence, bias, prejudice and ultimately chaos and corruption.

The process may not always appear sensible, fair or clear, in which case the process should be changed, as in amending a Planning Scheme, but to ignore existing process can lead to corruption if defined as "the perversion of the integrity of process" be the perversion be ever so small, even as small as an apostrophe.

David Clement.
Councillor.

**ST MARYS
COACH RESTAURANT
WISHES TO ADVISE THAT
THEY WILL BE CLOSED FROM
SUNDAY 17TH AUGUST AT 2PM
MONDAY 18TH AUGUST
ALL DAY
TUESDAY 19TH AUGUST
ALL DAY
OPENING WEDNESDAY 20TH
AT NORMAL HOURS.
SORRY FOR ANY INCONVENIENCE.
ROSS AND TRACY.**

Nominations for Community of the Year.

Do you think St Marys is a great place to live and local community groups run quality events and projects?

Lets nominate St Marys and the district for the Community Achievement Awards !

The Community of the Year Award aims to recognise the achievements and contributions of community groups, organisations, towns and projects.

If you are a community oriented group or run a project that benefits St Marys and the surrounding areas, I would like to hear from you. I am planning to put together a nomination highlighting the many community groups in the St Marys area, and will need details such as number of volunteers/staff in your group, number of hours contributed, sources of funding (optional), how long your project/group has been running, who/how many people benefit from your contributions, your group's community objectives, etc. Also photographs of projects and events will be very helpful.

Also, if any individuals would like to write a short piece outlining why you think St Marys is a great community or about the events you attend, I can incorporate this into the nomination.

I will need this information no later than 22 August, so the nomination can be submitted on time.

Hannah Rubenach
6372 2348
PO Box 14
St Marys 7215
dreambear@dodo.com.au

EAST COAST SURVEYING

Consulting surveyors and land planners.

Mark Anderson 6376 1972

We can help you.

- Buying a property?
- Planning a development?
- Unsure of your property potential
- In dispute with an adjoining



ST MARYS MECHANICAL REPAIRS
41 Main St St Marys Tas 7215
PH: 6372 2335
Fax: 6372 2822 Mob: 0419 503 109

The Healthy Community Project invite you to come along to our 'Show and Tell'

Find out what the Healthy Community Project:

Does in your community?

How can we help your community
to be healthy and vibrant?

*All your questions answered and
an opportunity for feedback.
So don't miss out on this evening.*

7.00pm Thursday 28th August 2008

@ The St. Marys Golf Club

Transport provided

For more information, to RSVP (for catering
purposes) or to book transport, phone the

Healthy House on 63765242

by Friday 22nd August.



Healthy Community Project

ST MARYS OP-SHOP

PLEASE NOTE:

OUR WINTER TRADING HOURS:
10.30AM — 3.30PM MON TO FRI.

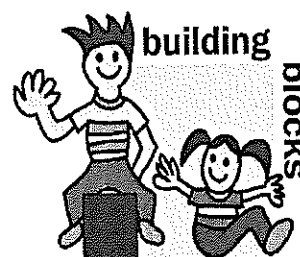
**FOR THE ULTIMATE IN RECYCLING
Finished with leaver's dinners?**

**Why not consider donating unwanted suits
etc to the Op-shop?**

**You may be able to help other students at
this expensive time of year.**

Ph: 6372 2733.

'Play and Learn'
sessions for
under-5s
their parents
and carers



Bicheno Memorial Hall Aug. 20, Sept. 3
Fingal School 1.30-3.00 Thurs. Aug.14
Pyengana Hall 10.00-12.00 Friday, Aug. 29
St Helens Neighbourhood House 10.00-12.00
Wednesday, August 27

Call Karen on 0400002116 for further details

Wombat Walk news and update.

The tree vandal

It is hard to comprehend why a person goes down to the Wombat Walk Park with their secateurs when they think they will not be seen, and selfishly vandalise trees that have been planted for the benefit of all the community.

What type of person chooses to destroy some of this work, pulls out or throws away a Claret Ash, cuts the top out of another as well as vandalising other trees?

The small group of volunteers who work at Wombat Walk each week take into consideration and have advice as to which species are most suitable for planting. This group receive good support from Break O'Day

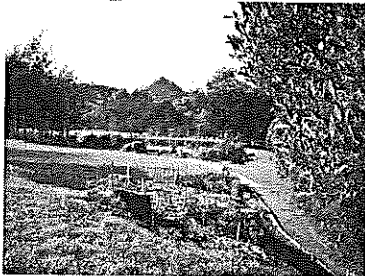
Council and the majority of the community for what they have achieved with the development along the St Marys Rivulet.



National tree planting day

Apsley MLC Tania Rattray-Wagner came as arranged on National Tree Planting Day to plant a Wollemi Pine, but because most people found the day too cold and wet to venture out, it was agreed to meet on another day, 11am on Thursday 14th August and invite some students from our school to join us. (more about this in next issue)

The barbecue lunch provided by Lions Club of St Marys members Len and Peter was much appreciated by those who planted 250 small native trees and grasses along the riverbank and the area on the bank where Council had arranged for the tall wattle trees to be removed for safety reasons.



Forestry Tasmania, Break O'Day Council and Natural Resource Management had generously supplied the trees for planting. Native species seedlings which have been raised from local seed collection and grown by Wombat walk members, were also planted.

Sandbagging at the township bridge

Work on the steep riverbank on the northern side of the bridge, previously overgrown with blackberries, has now been cleared and terraced with sandbags. Wombat Walkers Karl and Michael have worked with the help of Council workers to clear and stabilise the bank. Karl and Michael would like to give special mention to Break O'Day employees Stephen Lynch, Matthew Mitchell and Clinton Woods for their efficiency and the good job done when recently completing this project.



“Fun Walk” to Meadstone Falls

16 August 2008

THIS SATURDAY

Join Wayne Miller & Friends
for a fun day of adventure and exercise.

About a 2 hour round-trip walk
on uneven terrain.

**Meeting at Purple Possum
at 9:15 a.m.**

Will Carpool to
Meadstone Falls from there.

Things to bring:

Good walking shoes, warm clothing
and water. Picnic Lunch for after.

For more information call:
Karen in Bicheno 6375 1607
or Mickie in St Marys 6372 2926.

Rae & Partners

Lawyers Barristers & Solicitors
93 York St Launceston

Visiting :

St Marys Community Health Centre
Alternate Tuesdays : 9 am – 10 am

Ph: 6337 5555
Appointments: 6337 5555

Ransley's Appliance Service

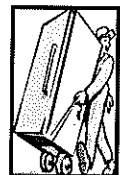
P O Box 136

Scamander Tas 7215

- Washing machine NOISY?
- Refrigerator runs too LONG?
- Clothes dryer blows cold AIR?

Then you need the service
of our technicians.

Ring us on: Scamander: 6372 5307
Mobile: 0428 761 811



Bulbs for the town

Thank you to Jurgen, Tracey, Julia and the Lions Club of St Marys for their donation of plants and bulbs, to be planted in public gardens around the town.

OUT OF THE WOODWORK

Wendy Brennan Treasurer 6372 2094

Thank you to Mr and Mrs Denney of Gray, who kindly donated some timber to the Guild, gestures like this are very much appreciated.

I would also like to thank Drew whose understanding of accounts makes my job as treasurer less intimidating by his kind guidance. (Deciphering figures was never one of my strong points) especially at audit time!

The Guild has been successful with its application for a three thousand dollar grant from the Department of Health and Human Services for our disabled access ramp.

I have received a reply from Clarence House. Unfortunately, His Royal Highness Prince Charles will not be attending our official opening in September due to his busy schedule. (Pictured right, is the copy of the reply I received from Clarence House, printed on beautiful recycled paper.)

Please note that it was decided at our last monthly meeting to change our meeting time to a **2.00pm start**

Please try and keep the **6th September free** as this is when we celebrate **our official opening**.

Please keep an eye out for a raffle which consists of a large wheel barrow filled with goodies. (The barrow is included)

The Guild will be sponsoring the **Northern Veterans Cycle Club** who will grace our town on the **5th October 2008** with their athleticism and hopefully for many years to come.

The Guild meets on the last Saturday of the month at the Old Railway Station Goods Shed at **2.00 pm**.

The Guild is open Monday, Wednesday, Friday and Saturday. Any other times by appointment.

WANTED

NEW STALLHOLDERS
FOR
ST MARYS MARKETS.
HELD 1st and 3rd
SATURDAY
THROUGH WINTER MONTHS.
TIME TO HAVE A
WINTER CLEAROUT OF YOUR
WORKSHOP, HOUSE, ETC.
ANYTHING NO LONGER OF USE
TO YOU MAY BE JUST WHAT
SOMEONE ELSE IS LOOKING
FOR.
COME ALONG AND JOIN US.
PH 6372 2818
to book a stall.
Markets held by
Grassy Bottom Arts.



CLARENCE HOUSE
LONDON SW1A 1BA

From: The Equerry to HRH The Prince of Wales and The Duchesses of Cornwall

22nd July, 2008

Dear Mrs Brennan,

Thank you for your letter of 13th July in which you very kindly invite The Prince of Wales to attend your official opening on Saturday 6th September.

His Royal Highness's diary for September was confirmed several months ago and, very sadly, other long-standing commitments that day mean he is unable to join you. He is so sorry.

However, His Royal Highness was grateful to you for thinking of him and has asked that I pass on his best wishes.

Yours Sincerely
Will Mackinlay

Major Will Mackinlay SCOTS DG

Mrs Wendy Brennan

WINTER MARKETS
held 1st & 3rd week every month
Community Hall, St Marys.

ORGANISED BY
GRASSY BOTTOM REGIONAL ARTS.

Dick Adams MP

Federal Member for Lyons

Please contact one of my offices if I can be of any assistance

53B Main Road
PO Box 50
Perth, Tas 7300
Ph 6398 1115

56A High Street
PO Box 271
New Norfolk Tas 7140
Ph 6261 3366

Toll free 1300 132 689
Email D.Adams.MP@aph.gov.au



**WORKING WITH YOU AND
YOUR COMMUNITY FOR THE
FUTURE**

Written and Authored by Dick Adams, 53B Main Road Perth
Tas. 7300



UPGRADE YOUR PC

IBM Thinkcentre P4

2.8 Ghz 512 Ram 40 Gig H.D.

New DVD Burner, Keyboard and Optical Mouse Licenced XP

Pro Pre Loaded Ex Lease Machines (no monitor)

12 Months Parts and Labour Warranty

\$399.00

Phone Bob 6372 2881



Some of the articles published recently have been too long, as we ask for 500 words or less.

In future, could contributors please keep to this agreement.

Ed.

The Say Cagerattler

Occasionally something outside our area needs a comment I think. As much as many of us will enjoy the current Olympic Games being telecast I am now a bit more ambivalent of it all, after viewing a program on national television about how it's perceived in China by their own people in close proximity to the Beijing sports venues in particular.

The report focused on the demolition of people's homes, to either allow construction of some of those venues, or so that the outside world saw the city as totally modern and vibrant in every way.

The report is an indictment on the Chinese Government. Whilst it is good that this monumental country is opening up to the world, it surely must not be life destroying for many of their residents and especially not for just a 16 day event, as marvelous as it is.

Perhaps the only way this could be allowed if (a) major compensation was made to the legal owners of all those residents and (b) that after the Games the greater public good is to be served by the constructions. It seemed by the nature of the report that neither of these was overwhelmingly likely. Really, really, sad.

Perhaps when the I.O.C. awards the Games to a country, a crucial criteria must be that at all costs no one should be disadvantaged by those Games. Surely not a major problem.

As we sit back in our comfortable armchairs watching gold medals being won, let's hope that the Chinese Government will relook at these issues of displaced people, because of the Olympics, and do something about it without prejudice. That might be a good thing.

What do you think ?

Carers for Wildlife Tasmania Inc.

would like to thank:

Jan Sparks, Rosa Mc Manamey & all the people who contributed their stories, poems, photos, & time to making the book Regener8 possible.

We are very grateful for the generous donation that we received from the Book Regener8, and to be acknowledged within the community as a volunteer group who care for & rehabilitate orphaned & injured native wildlife.

Many native animals, birds & reptiles were greatly affected by the 2006 bushfires, and we would like to thank all the people that helped us, to help the wildlife.

The money that we received will help us to continue to house & feed orphaned & injured native wildlife.

That helps to make our world a better place, its all about the wildlife!

Many thanks,
Sharlene King.



HEART DISEASE NUMBER 1 KILLER OF AUSTRALIANS – DON'T LET IT GET YOU!

The Healthy Community Project will be working with Bernard Denner, renowned men's health expert in the first week of September. They will be working all around the Break O'Day Municipality for the week, providing health screening and information sessions.

FREE HEALTH SCREENING will be available, so if you haven't checked your risk for cardiovascular disease and diabetes, men and women (particularly those who do not see a GP regularly) are encouraged to have a free health screening, to identify health risks and take early preventative action. "Some people have been screened in the past and advised to make changes regarding diet and exercise, so it is a great time for those people to come back and have a follow up test to see if the changes have had an impact." said Fiona Watts Health Promotion Coordinator.

The Healthy Community Project and Bernard Denner will be visiting an area near you so come along for a free five minute check for your wellbeing:

Monday 1st September 2 – 4pm Free Health Screening at St. Marys Pharmacy and Men's Information and BBQ at St. Marys Hotel 6 – 8pm.

Tuesday 2nd September 7 – 8.30pm Parent Information Session about Lifeskills for adolescents at Scamander Sports Complex.

Wednesday 3rd September 9 am – 4pm Free Health Screening at Veterans Information Centre and Men's Information and lunch 12.30 – 1.30pm

Thursday 4th September 11 – 2pm Free Health Screening at the Pub in the Paddock Pyengana.

Thursday 4th September 5-8pm Free Health Screening at St. Helens RSL and men's information session.

Friday 5th September 10am – 12pm Free Health Screening at Fingal Venue to be advised.

Cardiovascular disease was suffered by one in six Australians in 2004, and affected two out of three families. It prevents 1.4 million people from living a full life because of disability caused by the disease (www.heartfoundation.org.au).

So don't miss out. There is an opportunity near you, find out whether your lifestyle is going to keep you alive!

For more information please contact Fiona Watts at the Healthy Community Project on 63765242.

Tasmanian Lymphoedema & Laser Centre Inc.
Operating from the St Marys Community Health Centre

Do you have a sporting injury, ulcer, arthritis,
gout, tennis elbow?

As well as treatment for the condition of Lymphoedema, the low level laser at the Tasmanian Lymphoedema Centre, can help with the treatment of these common conditions.

Call the enquiries/booking office on 6372 2900

Laser Therapist Kate Williams
Massage Therapist Sue Christianson 0418 515 419



Email: tlcstmarys@hotmail.com
www.taslymphoedema.asn.au

Civil Marriage Celebrant



&

Justice of the Peace

*Are you getting married?
I can offer you a wedding service
that is professional and fun!*

*I am a professionally trained
and qualified Celebrant.*

*I have performed several Weddings,
Renewal of Vows,
Commitment and Naming ceremonies
on the East Coast.*

*I will help you plan, prepare and create
a ceremony that you and your families and
friends will cherish and remember forever.*

*I will look after all the legal paperwork
and all you have to do is
relax and enjoy your special day!*

*I am also a Justice of the Peace
appointed by the State Government.
Please phone Peter on 0417 017 105
or check out my website @*

www.peterpowercelebrant.com.au

Funeral Services by arrangement.



Bits and Pieces

The history of the Tasmanian Aborigine dates back over 30,000 years. Evidence has shown that there were nine tribes scattered around the Island, with the Oyster Bay Tribe being the largest.

The Fingal Valley was home to the Ben Lomond Tribe and frequently visited, particularly in winter, by bands from the Oyster Bay Tribe. It is also thought that bands from the North Midlands Tribe and the North East, or Ringarooma Tribe, would have ventured into parts of the Valley at different times.

The East Coast from St Patricks Head, south to Triabunna, was the main territory of the Oyster Bay Tribe. They referred to St Patricks Head as Lumera Genena Wuggelina, which means a great molar tooth. The peaked mountain was a well known land mark to our indigenous people as well as holding significant spiritual values.

George Augustus Roberson, who coordinated the removal of Aborigines from Van Diemens Land to the Bass Strait Islands in the early 1830s, noted that large areas of the Fingal Valley were burnt out. This he assumed was due to the native practice of burning to allow easy travel routes, as well as provide fresh pickings for their food supply. It is believed these burn-offs contributed to the Break O'Day Plain's rich, fertile grazing land found by our settlers when they arrived in the 1820s.

For more from the Historical Society call into the Old St Marys Railway Station History & Gifts, or phone: Darlene 63722007, Barry 63725752, or Jim 63722127

Break O'Day Stitchers

Break O'Day Stitchers are having a
Friendship Day on 3rd October, 2008.

Everyone is welcome at the
Neighbourhood House in the Bungalow,
from 10.30 a.m. to 3.00 p.m.
\$10 entry includes morning tea, lunch,
lucky door prize and much more.

Bring along your Arts and Crafts
for show and tell (optional).

Enquiries:-
Elsie 63761663 or Val 0417 594 322.

R.S.V.P. 29th September, 2008.

HARRIS FUNERALS

Lindsay & Diane

(D. Bailey & son) A.F.D.A

Ph/Fax: 6376 1153 Mob: 0418 133 420

Office & Residence:

114 Cecilia St
St Helens

Chapel:

46 Tully Street
St Helens

We are here when you need us
to arrange Burial or Cremation.

Pre-paid and pre-arranged funeral plans are available.



AURORA AGENT

NEW PRE-PAID TELSTRA PHONES

SAMSUNG SGH-A411	\$149.
L.G TU 500	\$199.
NOKIA 6085	\$ 99.
TELSTRA F156	\$129.

FATHER'S DAY CARDS
NOW AVAILABLE

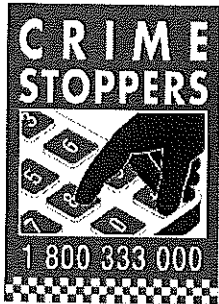


Open 7 days a week for your convenience.
6am - 7pm Mon. to Fri. 7am - 6pm Sat. & Sun.

DVD HIRE CENTRE

CALOWS BUS DEPOT

The Newsagency
wishes to advise that
**EFTPOS
IS NOW
AVAILABLE**



St Marys Police report

It is an unfortunate part of life that occasionally a family group will have some form of argument or disruption to their normal way of doing things, this is to be expected.

It is not however, acceptable when such a dispute leads to physical violence or verbal

harassment.

Tasmania Police takes a pro-active approach toward preventing family violence and will not tolerate it in any form.

We deal with domestic violence on a regular basis and have excellent legal practices in place to help prevent it from occurring or re-occurring.

It is not always the case that a person arrested or dealt with by Police from a family violence issue will be taken from their home, never to return, we have numerous ways to put orders in place to allow normal family life to continue, all be it with some minor constraints.

Police not only enforce the legal aspects of family violence but can arrange for counseling for couples, respite for victims and children and many other support services for victims.

We ask that all family violence incidents be reported so that appropriate measures can be taken, violence can take many forms and may not just include physical altercations. It can extend to constant harassment, insults and restrictions on a persons movements and actions.

If you are the victim of family violence or know someone who is a victim and they are not reporting it, do not hesitate to speak to your local police officer or call **Safe at Home on 1800 633 937.**

Support for victims can also be provided through the **Court Support Service and Lifeline on 1300 300 238.**

Also, a friendly reminder that St Marys police station no longer takes payment for car registrations or transfers. This can be done at the local Post Office. Firearms and Driver licenses can still be done at the station between 9am-12pm and 1pm-4pm Monday to Friday.

StMarys Police Phone Number **63721010**
 Non Urgent Number **131444**
 Urgent and Life threatening **000**

THANK YOU

MANY THANKS TO THE PEOPLE WHO SUPPORTED THE CATHOLIC CHURCH, CHRISTMAS IN WINTER LUNCHEON, BY ATTENDING, DONATING AND COOKING, WORKING ON THE DAY, OR BUYING A RAFFLE TICKET.

THE FUNCTION WAS A HUGE SUCCESS ONCE AGAIN, AND THE FOOD AS GOOD AS EVER, BY ALL REPORTS, AND A FUN DAY WAS HAD BY ALL, WITH THE ROOM ALMOST FILLED TO CAPACITY.

THANK YOU TO THE ST MARYS SPORTS CENTRE FOR THE USE OF THEIR VENUE.

Happy Belly DELI

FOR ALL YOUR
 LOCAL AND IMPORTED
 GOURMET MEATS, CHEESES, AND
 ORGANIC SOURDOUGH BREADS.

WE SERVE ORGANIC
 FAIRTRADE JASPER COFFEE.

NEW WINTER MENU

FOR SNACKS & LUNCHES.
 CATERING AVAILABLE
 PHONE: 6372 2044.

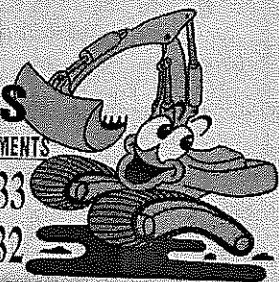
WINTER TRADING HOURS
 OPEN : WED, THURS, FRI, SAT, 10AM—4PM

C & D EXCAVATIONS

FOR ALL YOUR EARTHMOVING REQUIREMENTS

Phone : 03 6372 2033

Mobile : 0439 722 032



LOCAL OWNER - OPERATOR OVER 20 YEARS EXPERIENCE

Ph : Dana or Craig 6372 2033 /0439 722 032

If the earth doesn't move for you, let us help !

- ◆ 2 x 20 TONNE EXCAVATORS WITH TILT BUCKET & RIPPER, ROCK & LOG GRAB & QUICK HITCH
- ◆ D 65 KOMATSU DOZER, RIPPER & TILT BLADE
- ◆ 10 YARD TIPPER
- ◆ COMPACTION ROLLER
- ◆ 4 WHEEL DRIVE TRACTOR & SLASHER
- ◆ DAMS
- ◆ ROADING
- ◆ SLASHING
- ◆ FIRE BREAKS
- ◆ LAND CLEARING
- ◆ HOUSE SITES
- ◆ BRIDGE CONSTRUCTION
- ◆ ROAD GRAVELS AVAILABLE
- ◆ AND MUCH MORE

CATHOLIC CHURCH RAFFLE WINNERS

1ST GLORIA WARD
 2ND ERIC BEAN
 3RD JOAN DAVIS
 4TH MARY POIESZ

St Marys 1903 David Clement
6th Instalment

GermanTown

Above the fog and the rich marshlands of Londavra are mountains to the north west of St Marys; over these mountains is the district of German Town, so called because descendants of the settlers who arrived in the district in 1855 from the German States were the early settlers there. German Town is carved out of the dense heavily-timbered forest by a most industrious, thrifty lot of settlers who are reaping their reward. Adjacent is the settlement of Dublin Town, the location of 'Derry Lodge', home of Mr R. Speers. The flat country of both settlements in its natural state was very heavily timbered, but the soil, being a rich chocolate, was sufficient to entice the settlers to set to work and clear it. There are only a few holdings, ranging from 50 to 200 acres. The principal residents are Messrs T. H. & P. Lohrey, who have resided in the locality for nearly 30 years. There are two public buildings, the Church of England and the State School.

However, it would be misleading to believe that German Town is the focus of settlement in the District for migrants from the German States. While the Lohreys arrived in Tasmania on the America in 1855 with other settlers from Bavaria, Nassau, Wirtemberg and other independent German States, other migrants from Prussia in 1870 took up land and settled predominantly in a crescent from an area below St Patricks Head, now strangely referred to as Irishtown, through Green Valley and Gray and along Thompsons Marsh Road.

The settlers in the district from the German States arrived on various migrant ships between 1855 and 1872. Of greatest significance to the Break O'Day Plains was the "America" in 1855, and the "Victoria" and the "Figaro" in 1870. The migrants on the "America" were leaving behind economic depression in Europe at the time, encouraged by the bounty migrant scheme introduced to overcome the shortage of labour brought about by the cessation of convict transportation in 1853. The migrants on the Victoria and the Figaro were mainly families who had lost menfolk in the Austro-Prussian War of 1866, and who feared to lose more in the obviously upcoming Franco-Prussian War of 1870. These families and their descendants are now an integral part of the local community and economy. Before they arrived, the landowners used their land as sheep and cattle runs; the new settlers brought a different history and culture to the area, and new skills, and have planted and sowed, producing grapes, hops, potatoes and numerous vegetables, smoked and pickled, made cheese, yoghurt, butter and sausages, brewed beer and made wine.

The Railway

St Marys is the terminus of the Fingal Railway line, opened in 1886. This station supplies, on order, all the coal trucks needed by the mines to take away their coal. In addition to the ordinary trains running daily, a special rake of coal truck is run every other day. From each pit a tramway runs to the railway line which enables a train to be loaded without much inconvenience. The mines have telephone communication with the railway station, which greatly facilitates trucking arrangements. There is a running shed affording berthing room for four engines; also a goods shed. Residences, "Railway Cottages", are provided by the Department for the station master, Mr F G Tabart, guard and engineers. The traffic on the line is mostly in the carriage of coal, and it is the return from that source upon which the upkeep of the line chiefly depends. It is no coincidence that both Cornwall and Mt Nicholas Mines and the St Marys Railway Station commenced working in the same year, 1886.

There is, however, a good deal of dissatisfaction existing locally, at the Railway Department not being able to supply enough trucks at all times to meet the demands of the mines. When trucks are not available, no work is done, which means a great loss to the men. The same state of affairs is experienced each year at this season, owing to the large trade on the North West Coast with harvest products calling for trucks. Neither have the passenger train arrangements, either to Hobart or Launceston, been at all satisfactory. For over two years endeavours have been made to induce the Government to run two trains a day each way to Conara Junction. Passengers have been subjected to long delays at the Junction on certain days, which could have been avoided if trains left St Marys daily at 9.00 am and 12.30 pm. Satisfaction has been expressed on all sides at the alteration to the service to meet these complaints, just announced.

Continued next issue if space permits.

Scamander Beach Surf Shop

6 Lagoon Esplanade
Scamander

Ph: 6372 5529

Scamandersurf.com

Bathers Wetsuits DVDs
Clothing Footwear
Bodyboards Watches
Jewellery

Surfboards:

Milch McTavish
Surftech Bic G Boards

Bay Surf Shop

2 Pendrigh Place
St Helens

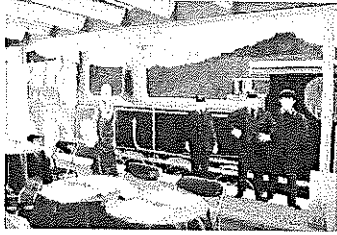
Ph: 6376 1755

ST MARYS HISTORY & GIFTS

WINTER TRADING HOURS.

MON - SAT: 10 - 4PM

SUNDAY: CLOSED



NOW OPEN

Reduced menu
for winter months.

Full menu available
for group bookings

Ph: 6372 2007



NORTH EAST COMPUTERS Pty Ltd

Established 1995 ABN 44 074 123 425

3/34 Quail St Ph: 6376 2445

St Helens Fax: 6376 2447

Email: sales@necomputers.com.au

www.necomputers.com.au



Disaster Recovery & Service Contracts

-We make it work properly -

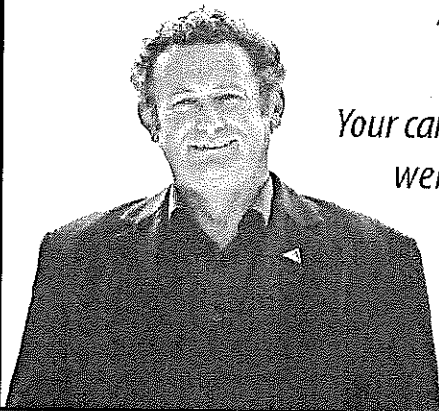
Custom-built Computers sold, repaired and serviced.
Free to Air Satellite Television installed and serviced.
Satellite Broadband internet Sales and Installations.
(free installation if ADSL not available -conditions apply)

Ph: Peter or Daryl for free quotes and friendly advice.

Bus. Hrs: Open 9am to 5pm Monday to Friday
9am to 12pm Saturday.

Tim Morris MHA

Tasmanian Greens Member for Lyons



*Your call is always
welcome.*

Address: 33 Burnett St, New Norfolk 7140

Phone: (03) 6261 8048

Fax: (03) 6261 8047

E-mail: greens@parliament.tas.gov.au

www.tas.greens.org.au

Authorised by Tim Morris MHA, Parliament House, Hobart 7000.

Wendy,

What's happening with your fantastic idea of bud lights
in the trees, outside the hall?

It seems like an easy and very effective solution for part
of the Main Street beautification.

How can St Marys residents help you see your dream
become a reality?

Regards,

Kelly, Strawberry Jelly.

For service and reliability

TROTTERS CONTRACTING CORNWALL

- Septic tank cleaning service
- 7.5 ton excavator & ten-yard truck hire
- Licensed water cart for bulk supplies
of drinking water
- Water cart for roadwork
- Also St Marys Wood Yard for all your wood supplies

Remember it doesn't matter who

Ring Glen or Marcus on

6372 2107 or 0417 279 422

6372 2742 or 0419 322 035

Excavator fitted with grab • Custom made v drain
buckets • Narrow trench bucket for poly pipe &
electrical • Ripper and all digging & clean-up buckets
• Supplies of bedding sand & gravel • House sites &
blocks cleared • Rubbish removed & roadwork

*If we can't do your work we will do our best
to find you someone who can*

PLEASE NOTE: ARTICLES MAY NOW BE LEFT AT
THE ST MARYS PHARMACY, POSTED OR EMAILED.

Strawberry Jelly

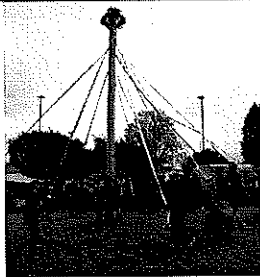
42 Main St. St Marys

Ph: 6372 2684

Soap
Incense/cones
Flags
Crystals
Books
Essential oils
Belts
Toys
Necklaces
Frogs
Candles
Spiritual sky oils
Teddy scares
Witches
Bags
Clothes
Fairies
Hair accessories
Hemp clothing
Elvis

Beanie Kids
Cards
Bells
Scarves
Rings
Perfume oils
Buddhas
Pens
Bangles
Lizards
Gift wrap
Burners
Living Dead dolls
Earrings
Badges
Gnomes
Phantom

Locally made —
Woodwork
Beanies
Jewellery
Gift boxes
Puzzles
Burls
Leatherwork
Tobacco pouches
Crystal hangers
Gloves
Scarves
Goat soap
Leaping frogs
Fudge
Funky hats
Ear warmers



Grassy Bottom Regional Arts

ST MARYS SPRING FAIR

(FORMERLY MAYPOLE)

WANTED

NEW IDEAS AND EXPRESSIONS OF INTEREST.
COMMUNITY GROUPS AND INDIVIDUALS WHO WOULD LIKE TO ASSIST,
HAVE A GREAT IDEA OR JUST WANT TO HAVE YOUR SAY.
HELP MAKE THE SPRING FAIR A WONDERFUL COMMUNITY EVENT THAT
EVERYONE CAN BE PROUD OF.

MEETING AT THE SUPPER ROOM, TOWN HALL
TUESDAY 19TH AUGUST, 7 -8PM.

(Refreshments will be served)

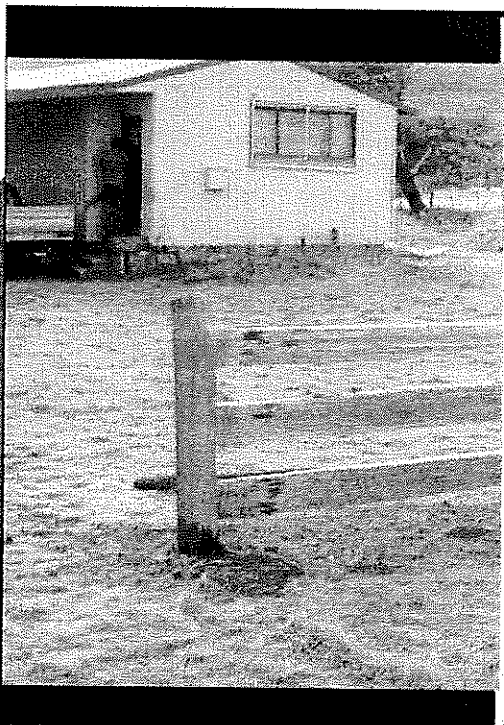
Contacts:

Tracy 0429 190 180

Jan 0421 319 586



BreakO'Day Woodcraft Guild Grand Opening



6 September 2008

Time: Start 8.30am

Location Old Railway Shed
behind St Marys Railway Station

All day markets, BBQ, wood-
turning, barrel making, pet
show, history display and sing-
ing

Contact person: Reon 63722094



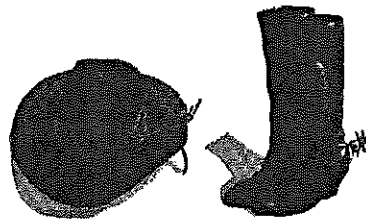
St. Marys Country Music Gospel Service 2008

at Holy Trinity Anglican Church, Main Street, St. Marys

Sunday, 31st August, 2008 @ 11 a. m.

followed by a Bring & Share lunch

Get into that country swing
and dress up in your jeans, hats, and boots,
or any country gear that gets you in the mood!



Singalong to some great country gospel songs
and enjoy listening to -

The Break O'Day Banjo Boys
Suncoast Singers
Grassy Bottom Singers
Valley Coasters (line dancers)
Don Ives
Charlie Koellner
Hetty Binns
Ian and Rita Summers

Entry/offering by donation

**PROCEEDS TO EAST COAST COUNSELLING
SERVICE/ANGLICARE**

ALL WELCOME – BRING YOUR FAMILY & FRIENDS!

Contacts: Ian and Rita Summers, 03 6372 2724 (BH) or 0417 027 424

MEALS ON WHEELS ROSTER

June/July	St Marys	Fingal
Monday 18th	Debbie Barnes	Lynda Bean
Tuesday 19th	Pam Lynch	
Wednesday 20th	Geoff Herrmann	
Thursday 21st	Heather Griffiths	
Friday 22nd	Claire Bean	Shirleen Woods
Monday 25th	Trish Pike	Debbie Speers (N)
Tuesday 26th	Patricia Barr	
Wednesday 27th	D & V Rice	
Thursday 28th	Yvonne Salter	
Friday 29th	Wendy Aulich	Julie-Ann Claridge

Church Services

Catholic Parish of St Marys

Sr. Lorraine Groves

Parish House. Ph: 6372 2252
Mob: 0409 172 741

1st Week: MASS

St Helens Vigil 6.00pm
Bicheno 9.00am
Fingal 11.30am
Campbell Town 5.00pm

2nd Week LITURGY

St Helens Vigil 6.00pm
St Marys 9.00am
Bicheno 9.00am
Fingal 9.30am

3rd Week: MASS

St Helens Vigil 6.00pm
St Marys 9.00am
Swansea 11.30am
Campbell Town 5.00pm
Bicheno Liturgy 9.00am

Week 4 LITURGY

St Helens Vigil 6.00pm
St Marys 9.00am
Bicheno 9.00am
Fingal 9.30am

5th Week MASS

St Helens Vigil 6.00pm
Bicheno 9.00am
St Marys 11.00am
Ross 5.00pm

Anglican Parish of Northern Midlands

Avoca: 11am 2nd/4th Sundays
Fingal: 3 pm 1st/3rd Sundays
Mathinna: 3pm 2nd/ 4th Sundays
Ross: 11am 1st/3rd Sundays
Campbell Town: 9am every Sun.
(3rd Sunday -Family Service)

Anglican Parish of Break O'Day

Ph: 6376 1144

St Helens Every Sunday
8 am and 10.30 am
Kanga Sunday School
10.30 am – 12 noon
every Sunday for children
5 – 12 yrs

St Marys every Sunday 10 am

Pyeongana 4th Sunday, 2pm.

Salvation Army Monday JAM

3-5pm every Monday.
except school holidays.

Sunday JOY

12.30pm—2pm.

For soup & Sandwich
Fellowship lunch.

Melanie Norton Ph: 6372 2099

Break O'Day Uniting Church

The Manse St Helens

Ph: 6376 2405

St Helens 9.00 am

Fingal 11.15 am

Seventh Day Adventist

Hodgeman Street Scamander

Sabbath School 10 am

Divine Service 11 am

St Marys Online Access Centre

Opening Hours:

Monday 10am -3pm

Tuesday 10 am-4pm

Wednesday 10am-4 pm

Thursday 10 am – 3 pm

Friday 10 am – 3 pm

Saturday 11 am – 2 pm

Ph: 6372 2005

On Air Now!

Vision FM 88.0 at both St. Marys and Fingal.

100% positive music & talk all day long;
connecting faith to life.

Have breakfast with Robbo in the morning
on the

National Vision Radio Network.

Phone 1800 007 770.

web www.vision.org.au

Classifieds in the Valley Voice are free of charge. If your articles are not sold after the first entry, we will repeat the ad in the next issue.

Please inform us if your items are sold.

Please note: Letters to be published in the Valley Voice must be signed. Your name need not be published, but we must have a signature. Please keep letters to 500 words or less.

Articles and letters published in the Valley Voice are not necessarily the opinion of the staff and volunteers of this community paper. Ed.

Contacts for Valley Voice

PH: Judy: 6372 2155

email: judith.spilsbury@bigpond.com

Accounts: Mary: 6372 2328

Please leave written material at the
St Marys Pharmacy,
Main St, St Marys,
or post: C/- Post Office, St Marys. Tas 7215

Advertising: 2008

Classifieds: 25 words or less: free

Community notices : free.

Small ads. Garage sales. Greetings.

Thanks etc. \$12.

¼ page \$20. ½ page \$30.

Full page \$50.

1 year posted subscription \$28.

Spring of the Vineyard Church Pentecostal Christian Church

Church Services

Every Sunday at 10:30 am

At Scamander Fire Station



For all enquiries:

Pastor David Brewster

Ph: 6372 2796

ALL WELCOME

Monday	Tuesday	Wednesday	Thursday	Friday
			14th August ♦ Drama Excursion - CATS ♦ RDA ♦ Country Gold Parent meeting 3.30 in Hall	15th August
18th August ♦ Parent/Teacher Interviews ♦ Dental Service	19th August ♦ Parent/Teacher Interviews ♦ Dental Service	20th August SCHOOL ASSOC. Meeting 7pm School Staffroom. ♦ Football/Netball - Launceston	21st August ♦ Master Builders Assoc. Presentation 1.30pm Gr 9-10. ♦ Country Gold	22nd August ♦ Country Gold
25th August ♦ Arts on Tour ♦ Dental Service	26th August ♦ Arts on Tour ♦ Dental Service	27th August ♦ Arts on Tour	28th August ♦ Arts on Tour performance at school ♦ Theatre of the Deaf ♦ Next School Newsletter ♦ RDA	29th August ♦ Theatre of the Deaf

	Dates for St Marys: ♦ Monday 18th August ♦ Tuesday 19th August ♦ Monday 25th August ♦ Tuesday 26th August ♦ Monday 1st September ♦ Tuesday 2nd September		Please feel free to contact them regarding your child's dental health on the numbers below: <table border="0"> <tr> <td>St Marys Dental Unit</td> <td>6372 2488</td> </tr> <tr> <td>St Helens Dental Unit</td> <td>6376 5208</td> </tr> <tr> <td>Kelham Street Dental Unit</td> <td>6336 4100</td> </tr> </table>	St Marys Dental Unit	6372 2488	St Helens Dental Unit	6376 5208	Kelham Street Dental Unit	6336 4100
St Marys Dental Unit	6372 2488								
St Helens Dental Unit	6376 5208								
Kelham Street Dental Unit	6336 4100								

Grade 9/10 Real World Project 2008
St Marys and St Helens District High Schools

In 2007, St Marys and St Helens District High Schools professionally published a book of poetry from young writers on the East Coast. In Term 2 of 2008, we hope to provide an equally rich 'real life' learning experience, this year focusing on journalism, news writing and broadcasting. We believe in engaging students in dynamic and authentic learning, where they are able to get out of the classroom and see literacy in action.

Students will understand:

1. *How 'freedom of press' plays a role within a democracy;*
2. *Why there are ethics and standards applied to journalism;*
3. *How 'newsworthiness' is decided;*
4. *The types and roles of different forms of journalism;*
5. *The structures and features of journalistic texts;*
6. *How a media organisation is structured*

Our aim is to work towards the professional publication of a newspaper and television and radio news programs from across our East Coast cluster. As with our poetry book, students will be responsible for all aspects of our publications. We have just received a grant of \$1500 to help us reach the professional heights we are aiming for. We hope to hold a celebration, as the launch of our finished products, for all families, sponsors, local dignitaries, contributing writers and our 'expert' mentors.

Parents, if you would like a closer look at what we have planned, please feel free to contact me at the school on 63723900 and I will be happy to provide you with a unit plan.

Can you help us?

We would love to involve some community mentors in our project. So, if you have particular skills or experience relating to journalism and would be prepared to donate some time, we would love to hear from you. This might be in the areas of writing, sound recording, photography etc. If you are interested please contact me at the school on 6372 3900.

Thanks,
 Megan Gillard
 9/10 English Teacher

SCHOLASTIC

Book Fairs

www.scholastic.com.au

BOOK FAIR

BASH!

You Are Invited to
Join the Party!



To be held at
St Marys District High School in
Room 41, Home Economics Block on:

Thursday, 21st August - 9:00am - 4:00pm

and

Friday, 22nd August - 9:00am - 3:15pm

Our Book Fair is a lively and fun event that enables children, parents, teachers and community members to purchase quality books and classroom materials at reasonable prices, while raising funds for our school.

13 Gray Road, St Marys, TAS, 7215.
Phone: 6372 3900 Fax: 6372 2543
Email: st.marys.district.high@education.tas.gov.au



ST MARYS COMMUNITY HEALTH CENTRE

CHANGES TO THE DOCTORS ROSTER

Please be aware of ongoing changes to the doctors roster

DOCTORS on ROSTER

Dr. T. Tymms 15/8/08– 24/8/08

Dr. H. Baker 14 & 15th August 2008

PLEASE BE PATIENT

Our Locum Doctors are doing their very best but waiting periods can apply, please be patient. We appreciate your cooperation.

AFTER HOURS SERVICE

PLEASE PHONE GP ASSIST ON 1300 780 011

AMBULANCE 1800 008 008 or

EMERGENCY 000

COMMUNITY HEALTH CENTRE 6372 2111

BEFORE PRESENTING AFTER HOURS.

St Marys Community Health Centre

GP Surgery Hours:

8:50am-12:30pm

12:30pm-1:30pm LUNCH

1:30pm-5:00pm

SCRIPTS AND DOCTORS APPOINTMENTS

Please ensure doctors appointments are booked **prior** to your medication/s running out or **in advance** if you are attending this practise regularly. Patients can not request scripts over the phone.



Tasmanian Lymphoedema Centre Inc.

Please be aware that Kate Williams and Sue Christiansen will be on leave until Monday 18th August 2008.

UPDATE OF PATIENT INFORMATION

Have any of your details changed?

Have you moved, changed your phone number, got a new Medicare card, Health Care Card or DVA Card?

Please ensure your personal details are currently valid.

Details can be updated on your personal medical records by our receptionists on your next visit to the Health Centre.

PHYSIOTHERAPY SERVICES IN BREAK O'DAY

Margaret Van Der Mere will be available at:
(Please note the change of days: effective as of now)

ST MARYS- TUESDAYS & THURSDAY

Phone: 6372 2111

ST HELENS- WEDNESDAYS & FRIDAYS

Phone: 6376 5222

WHAT'S ON AT THE CENTRE

14th August **East Coast Counselling Service**, Thom Ryan 10:30am-11:00am

15th August **National Relay Service**, staff information session, 2:00pm at the CHC.

18th August **TLC (Tasmanian Lymphoedema Centre)** General Meeting 10:00am in the Day Room.

19th August **MOW (Meals on Wheels)** General Meeting 2:00pm in the Day Room.

19th August **Child Health Session** with Sue Gofton Every Tuesday by appointment.
on: 0428136381

19th August **C.H.A.T Session** 1pm in the Day Room phone 6372 2111 for further details. All parents and guardians welcome to attend.

20th August **Psychologist-** Dohotay Teboult appointments by referral from your GP.

21st August **Podiatry** with Erika Fearman 9:00am-2:00pm. For appointments please phone Erika on 0419 333 872

SOCIAL WORK SERVICES IN BREAK O'DAY

Helen Jennings will be on annual leave from 20/8/08–10/10/08.

There will be limited social work cover for the St Marys Community Health Centre during this time.

Social Work Services at St Marys will be:

Shan Williams

9am-5pm 27/08/08

9am-5pm 10/09/08

Shan Williams will be available at St Helens on 6376 5244.

Other social workers available:

Thom Ryan, East Coast Counselling Service

Ph: 6376 1810/ 1800 111 878

Abbie Ford at the Healthy Community House

Wednesday and Thursday 8:30am-4:30pm

Ph: 6376 5242

Stewart Miller, Senior Social Worker will be available for phone consultation and visits if required.

Ph: 6336 5155

PATHOLOGY SERVICES

There will be no Pathology Services between 12:30pm-1:30pm at The St Marys Community Health Centre.



Seniors lets get together
& have a BLAST in 2008!



(Better Living for ALL Senior Tasmanians)

Core Stability Classes

(BAD BACK'S)

The above exercise classes are to be expanded to two days a week. Classes will be conducted by Margaret Van Der Merwe (physiotherapist).

STARTING 5th of AUGUST 2008

TUESDAY's between 9:30 & 10:30 am.

THURSDAY's between 3:30 & 4:30 pm

(Support your CHC with a gold coin donation per class.)

Come along, feel better and have a blast !

ST MARYS Community Health Centre



6372 2111

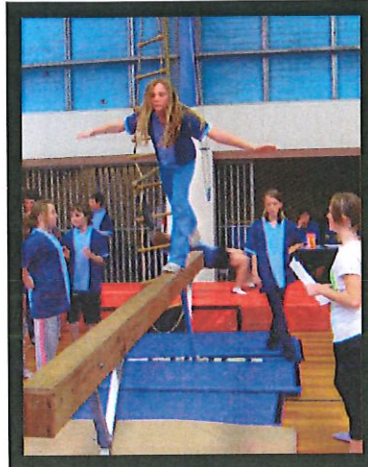




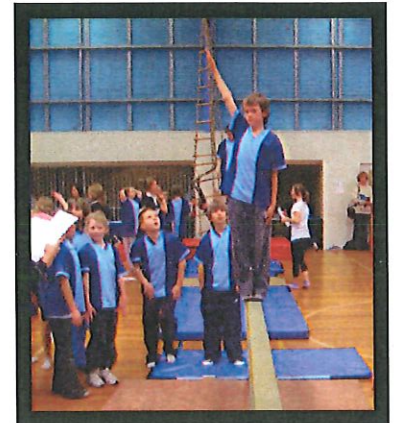
East Coast Gymnastics Carnival at St Helens 31st July 2008



Kurtis Tuck



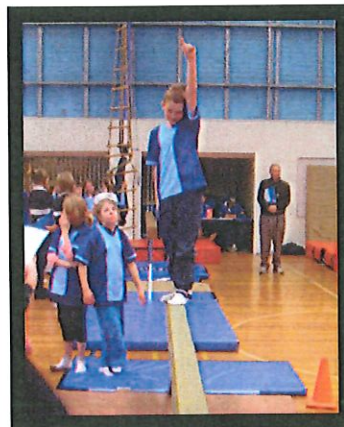
Tayla Stingle



Harvey Flynn



Grace Gee



Sam Herbert



Jorgia Woods

Calendar of Events - August

11th Parent Teacher Interviews 3.15-7.00 p.m.	12th Parent Teacher Interviews 3.15-7.00 p.m.	13th Choir Practice 10.30-1.00 p.m.	14th Big Newsletter Country Gold Uniform Presentation	15th
18th	19th	20th	21st Country Gold Carnival L'ton Soccer, Football & Netball	22nd Country Gold Carnival L'ton Soccer, Football & Netball

St Marys Sports Centre Inc. News Kackhander

First of all some great news. Congratulations to our youngest ever Club Champion Kodie Donald, (pictured right) after playing some truly good golf during the event completed on August 3rd. Kodie shot 312 to win by 6 shots from evergreen John McDonald who also played some wonderful golf in at times, difficult conditions.



Kodie was only a hair away from A Grade at the start of the event but his scores have now entrenched him as our newest A Grader. Next target is single figures which will only be a matter of time it seems. Thanks so much to all who took part or helped out after a shaky start. Another fantastic component of the championship was the incredible finish in C Grade between Craig Freiboth and Kirk Bean. After 72 holes it came down to the last green. Neither could gain ascendancy there so it was off to a 3 hole playoff. On the final putt Craig dropped a beauty with the "magic putter", to take the championship in a true nailbiter. Congratulations Craig and also Kirk. "Beany" took out the C Grade Handicap though, which was good to see. A Grade was won by John McDonald and B Grade Kodie Donald. Once again to all those who played and to anyone whose circumstances prevented them to be able, thanks for your efforts and hopefully next year ALL will be able to play.

Another big thanks goes to the eradication of the rare putterbird which nested in the tree on the 14th hole last Sunday week. It was a determined little b...when it lodged itself there for four days requiring the putterbusters to extricate it so it could rest again in a golf bag nest. The total fee was \$22 to be redistributed at a later date. Thanks from the Putterbird owner to the rescuers and it won't happen again. I promise.

Last Saturday Bruce Cornelius showed us how it was done with a terrific 42 points in stableford followed by 35 from Bob Hersey. Well done Corny.

We have a huge few weeks coming up with such events as the Harwood Plumbing Services Day kindly sponsored by Russell and Bobbie Harwood. Thanks so much. We also have Australian Golf Museum event, a very special Spilsbury Trophy celebrating 50 years and of course the ANNUAL TOURNAMENT, once again kindly sponsored by Brian and Trish at Hobart House of Golf. Don't forget they will have plenty of great new equipment on hand on August 23/24 to check out during the event.

To bowls and the green is really starting to look tops again and in a few short weeks it will be back in operation, so keep a look out for early club events that Jim Turner is currently organising. Any new members will be very, very welcome indeed.

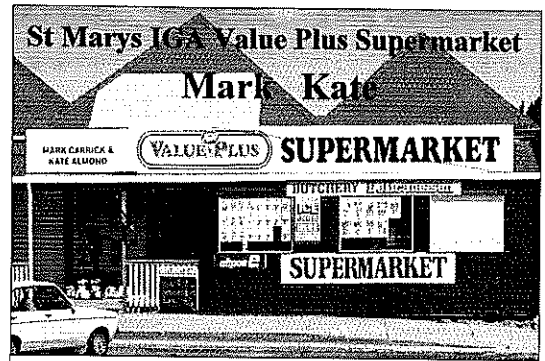
Milo wishes to thank everyone who supported the PUB RULES eight ball. It has been a real success this year. "Mark's Footy Tipping is going down to the wire with only a few weeks to run and a lot of canny tips may be required to get the big stuff.

Veteran Golfers DON'T FORGET—Annual Singles Championship at St Marys in a couple of weeks.

STOP PRESS!!!

Congratulations to Dale Ridgers one of our members, for being part of the Riverside Div 2 winning state pennant team. Fantastic effort dale.

Anyway until next time Good hitting and rolling.



38 Main Street St Marys
Phone/Fax 6372 2240 - Butcher Ph: 6372 2274
Mon - Fri 8am - 6pm
Sat 8am 12 noon

In-store butchery This week

Rump steak	\$10.99kg
Legs of lamb	\$ 8.99kg
Nichols chicken drumsticks	\$ 4.99kg
Island Fresh chickens	\$ 6.59kg

In store

Kleenex Cottonelle toilet tissue 6pk	\$ 3.99
Fine Fare creamy biscuits 250g	\$.99c
Vetta pasta range 500g	\$ 1.79
Arnotts shapes 110/200g	\$ 1.99

Frozen Case panel

Birds Eye sunnycobs/corn kernels 1kg	\$ 4.55
Scotts meat pie 105g	\$.89c
Peters original icecream 2lt	\$ 3.99
Bulla fruit & yoghurt selection 10pk	\$ 5.75

Late week

Lullaby jumbo disposable nappies	\$19.99
Palmolive dishwashing liquid 500ml	\$ 1.99
Purex toilet tissue 9pk	\$ 3.49
Whiskas canned dog food 400g	\$.99c

In-store butchery Next week

Corned silverside	\$ 6.99kg
Nichols chicken rissoles	\$ 9.99kg
Ingham thigh fillets	\$10.99kg
Ham steaks	\$ 8.99kg

Instore

Fab concentrate laundry powder 1kg	\$ 2.99
Devondale long life milk 2lt	\$ 2.99
Just Juice long life juice 2lt	\$ 2.79
Kelloggs corn flakes 310g	\$ 1.99

Frozen food panel

Birds Eye potato gems 1kg	\$ 4.25
McCain peas & corn range 500g	\$ 2.79
McCain frozen peas 1kg	\$ 3.65
McCain pizza base 700g	\$ 5.45

Late week

Sanitarium weetbix 1.2kg	\$ 3.99
Anotts family asst biscuits 500g	\$ 2.99
Heinz tom/variety soup 420/425g	\$.99c
Black & Gold sparkling apple juice	\$ 1.99

**DON'T FORGET THE HOT CHICKENS
AND READY TO EAT SALADS**

**AVAILABLE
IN STORE**

