

The Valley & East Coast Voice

Est. 1968

Volume 43 No. 9. Thursday September 23, 2010.

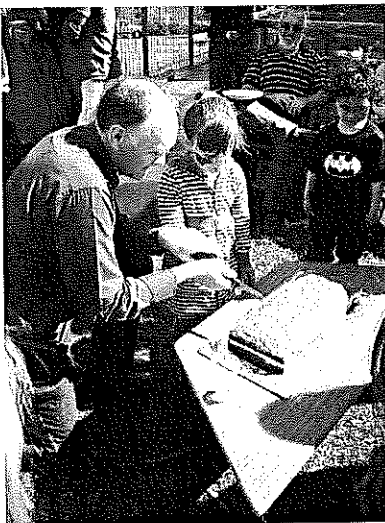
50 cents

St Marys Child Care Centre turns 5 !!!

Saturday the 18th September, saw a beautiful spring day with families, staff and community members gather to celebrate 5 years of continuous operation for St Marys Child Care Centre, supported by the Northern Children's Network. Approximately 60 people attended, with children enjoying outdoor equipment provided by Cathy Parker from Building Blocks, birthday craft, play dough and face painting. There were plenty of balloons and lovely decorations made by the children. A photo display bought back plenty of memories for all, while information on our expansion plans, the new Early Years Learning Framework and healthy drink choices was also available.



Staff members Tanya, Felicity, Rebecca, Deb, Tania. (absent from photo: Judi.)

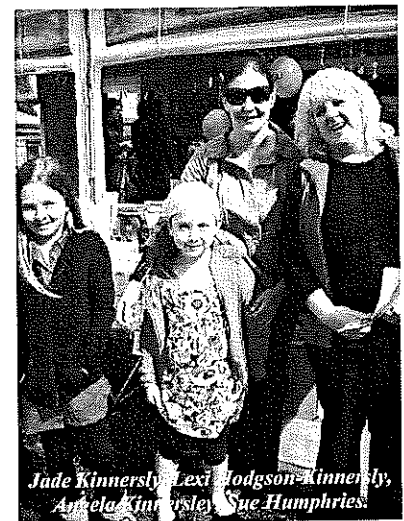


NCN CEO Steve Yates & Mia Gillies Cutting the birthday cake.

Staff attended from our Launceston office, including CEO Steve Yates, as well as the directors of the Scottsdale and Bicheno centres. Staff and families who formerly attended the centre travelled from across the state to catch up with friends and see how the children had grown. Everyone enjoyed a barbeque lunch and a delicious birthday cake in the brilliant sunshine.

Thanks go to all those community members who have supported us over many years. We hope to have at least another 5 fantastic years caring for the young children in our community.

Thanks also to Hayley at the Day Care Centre for the loan of the barbeque, the Community Health Centre for the display boards, St Marys Bakery for the fabulous cake and Tania and Michelle, Family Food Patch Educators for their time and support. *Photos supplied by NCN.*



Jade Kinnerly, Lexi Hodgson-Kinnerly, Angela Kinnerly, Sue Humphries

Please note: Deadline for articles in the next Valley Voice is 5pm Tuesday October 5, 2010

EMAIL ADDRESS: judith.spilsbury@telair.com.au

Community news

St Marys Hospital Auxiliary meets the first Monday of every month at 2pm at the St Marys Community Health Centre.

The Break O'Day Woodcraft Guild Inc. meets for meetings the last Saturday of the month at 2pm at the goods shed behind the St Marys Railway Station.

The Tasmanian Lymphoedema Centre Inc., holds meetings every 3rd Monday of the month at 10 am at the St Marys Community Health Centre, Day Care room.

St Marys Ladies Midweek Tennis 9.30am each wed. Need new players - of any standard-beginners welcome-childminding included - lovely safe place to bring toddlers while you play. **Ring Annette-6372 2224.**

St Marys Playgroup meets each Monday 10.30am - 12 noon at the Falmouth Community Centre, during school terms. \$2 a session per child or \$3 per family. Please bring a piece of fruit to share and your child's personal drink bottle. Bikes plus helmets welcome. **Phone or text: Danyelle: 0427 073 100.**

WOMBAT WALK LANDSCAPING GROUP meet every Wednesday 9am to 12 Noon (weather permitting) at St Marys Musical Playground area to plant and maintain the rivulet park and flower bank - anyone interested in joining us - please come along and meet our group. **Contact - Robina 6372 2022.**

St Patricks Head & Esk Valley Historical Society Inc has a meeting one month and a field trip the next. We invite everyone to come along on the third Sunday of the month and enjoy an informative time with lots of fun. For more information Phone: Barry Aulich (637225752) Darlene Wright (63722416) or Jim Haas (63722127)

Break O'Day Wine & Food Appreciation Society meets once a month on the last Sunday.
Ph: John 6376 3130.

The Scamander and Beaumaris Community Development Association meets at 7 pm at the Scamander Sports Complex every third Wednesday of the month. New members are most welcome.

The Falmouth Community centre would like to advise members and the community that the new contact for bookings of club facilities is Rachel Woods. Rachel can be contacted on: **03 6372 5118.**

Suncoast Singers meet every Friday at 10am in the Catholic Hall - Cecilia Street St Helens. New singers always welcome.....If you can yawn - you can sing. Phone Mary-Anne Wadsworth 6376 2969.

The Friends of the History Room hold General Meetings: 8th February, 10th May, 12th July --AGM, 11th October. Executive Meetings: 9th March, 14th June, 9th August 13th September, and 8th November. All held at Tidal Waters at 5pm.

Break O'Day Regional Arts - General meetings held on the first Wednesday of each month at 5.30pm in the supper room at the back of the St Marys Hall. All welcome. Inquiries to Colin 6372 2707 or Janet 6372 2851.



A.F.L.
GRAND FINAL
AT THE



FALMOUTH
COMMUNITY CENTRE
SATURDAY
SEPTEMBER 25, 2010
FROM 1PM.

LICENCED BAR,
ALL THE FOOTY FOOD, BBQ.
AND WATCH THE GAME
ON THE
BIG 3M X 2M SCREEN.
SEE YOU THERE.



St Helens Alcoholics Anonymous (AA) Wednesday 8pm Weekly. St Pauls Anglican Church Hall, St Helens. Murdoch 6376 3335.

St Marys Alcoholics Anonymous (AA) Thursday 11am Weekly. Day Centre St Marys Hospital Gardiners Creek Road, St Marys. Diane 044 790 3926.

St Marys Alcoholics Anonymous (AA) Friday 8pm Weekly. Holy Trinity Anglican Church Hall. Main St, St Marys. Rod 6372 2851.

St Helens Al-Anon Family Group (Al Anon) To help families and friends of alcoholics recover from the effects of living with the problem drinking of someone close. Sunday 2pm Weekly. St Pauls Anglican Church Hall, St Helens. Ann or John 6376 3270 Rose 6376 333.5

RETURN THANKS **Wayne Morris**

Mary & Trevor Viney wish to sincerely thank all for the cards, phone calls & personal expressions of sympathy, at the loss of a loved brother & brother-in-law.
Thank you all.
Mary & Trevor.

Classifieds in the Valley Voice are free of charge. If your articles are not sold after the first entry, we will repeat the ad in the next issue. Please let us know if items are sold. Every effort will be made to have correct details and phone numbers. However if there is a mistake, it will be corrected in the following issue.

Classifieds

For sale

Tiller/cultivator - Mantis - as new, only done 10 hrs, English design, great for vege garden and garden beds, 21cc, 2-stroke, lightweight, very maneuverable. Comes with instruction video, extra blades. Cost \$870, sell \$670. Call 6372 2686.

Epson printer, CX5500. Includes cord, CD Rom and computer cord. \$30. Ph: 6372 2330. for details.

KTM 300, 00' model, goes well and mech. good - \$3250

Motor X boots Alpinestar as new US9 (cost\$400) -\$175

Motor X helmet Fox (S) black/white - \$70

Motor X helmet Fox (L) silver - \$70

Motor X helmet (M) red, as new - \$30

Holden Rodeo rims + tyres - \$225

Toolbox, Tradesman, for Ute tray, 1800x600x500 \$150

Large metal box (make into gun safe) 1400x57x400-\$30

2 old pedestal basins (one cream, one pink) - \$40ea

Kid's 8 ball table VGC, 1500 x 750 - \$60

Glass shelving, suit shop or bathroom - \$40

Glass display cabinet - \$20

Kid's plastic sandpit - \$5

Caravan water tank - \$40

Dowelling machine 240v - \$50

Phone 0437 227 123 or 6372 2222.

Pine corner TV unit, large. \$125. **Recliner chair,** fabric cover, excel. con. \$75. **2 seater settee,** fabric cover, good cond. \$75. **Brass white and pink single bedhead** with fittings. Suit girl. \$15. Ph: 6372 2446.

2 x 2 seater couches. \$50 each. **Queen size mattress.** \$40. Ph: 0429 411 728.

Pureheat Royal heater. \$200. **2 seater brown fabric couch** \$200. as new. **NEC 50cm.colour TV,** with remote.\$30. Ph: 6372 2107 or 0417 279 422.

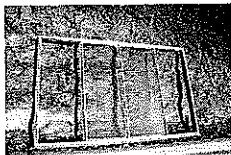
Infiniti—Cheetah ma 200x walking machine. (paid \$1,400 new) will sell for \$800. ono. **Sony 66cm TV.** \$150. **Sony 51cm TV** \$80. All in good condition. Ph: 6374 2178.

Dark blue cord velvet sofa bed. G.con. \$150. **Kenwood 3 disc stereo CD.** \$70. **Upright bar freezer.** G.con. \$70. **Niblick golf shoes,** size 10E. Worn once. \$30. Ph: 6374 2282.

For sale

4 LARGE WINDOWS 2.5M x 1.6M
1 fixed glass centre and 2 side sliders
\$200. ono

Ph:6372 5404



For sale

SECOND HAND KITCHEN
L Shaped with Island
Bench. Includes sink.
\$900. ono

Ph:6372 5404



WANTED Quiet horse or pony suitable for beginner riders. Ph: 6372 2059.

WANTED: Overlocker (in good working condition)
Ph: 6372 2648

WANTED - storage space for Break O'Day Regional Arts items.

Do you have a shed or garage in the St Marys' area that is vacant? Would you be willing to rent it (at a nominal cost) to BO'DRA for an ongoing period of time? Please call Leissa on 6372 2686 to discuss.

For sale

Toyota Camry CSI 1990. Good tyres, body and interior. comes with spare motor and other parts.

not going & no rego. \$500. Ph: 6377 1155.

Rotary hoe, Volka 6HP, electric start, 16" cut. Little use, as new. \$900.ono. Ph: 6372 5101 or 0417 385 787.

2 timber doors, one with new weather strip. \$40 or \$25 each. **cross-country skis.** \$80. Ph:6372 2686.

Jag XJ6, 3/81, Excellent cond. White with red interior, Jag mags, LPG conv, twin fuel tanks, CD player, new battery, many extras. \$6.000. Ph: 6377 1100.

Gym, by 'Body Sculpture'. Different levels of resistance, leg extensions. Pull down etc... Train in a supported sitting position. In very good cond. \$300.

Ph: 6377 1100.

4 rims and tyres, to suit Triton's 4 x 4. Ph: 6372 2164.

Yamaha RT 100 motor bike. Good cond. runs well. \$650. Ph: 6374 2155 or 0409 742 155.

XF sedan, very tidy, one owner. Recon motor, as new tyres. 6 mths rego. \$1,200. Ph: 6377 1209.

Victa ride-on mower. 8HP, 34" cut. \$500. Ph: 6372 2460.

Suzuki JR80 motorbike. Immaculate condition, low klms, original back tyre, bark busters. Blue, white, yellow. \$1,800. Firm. Ph: Janine or Peter on Fingal 6374 2269.

Peugeot 206XR - 2003, 4 door hatch, metallic red, 112,000km, new tyres/brake pads, reg, serviced, CD player, A/C, auto windows, etc. Great condition, reluctant sale. \$8,600 neg. Ph: Leissa 6372 2686.

Garden mulch, in big round bales. (wheat straw, weed free) \$60 a bale, delivered free in St Marys area.

Ph: 0407 944 158.

Tractor slashing available. Ph: 0407 944 158.

Portable milling available. Ph: 0427 715 577.

"Moo-Poo". Finely screened. Any quantity. See Norm. Ph: 6372 2380.

Frozen blueberries - this season's - \$11 kilo. Phone 6372 2341.

Remedial Massage and Naturopathy
now at the Purple Possum
ring Sue Christiansen for an appointment
0418 515 419

A LITTLE BIT OF HERITAGE: Jim Haas "Freycinet"

Easter 1910 saw a group from the Tasmanian Field Naturalists Club conduct a camp at what we now know as The Fisheries. This is a charming little beach on the opposite side of the bay from where the Coles Bay township is now situated. The group of ninety seven, made up of both men and women, travelled up from Hobart on the vessel *Koonookarra* and set up camp in preparation for a weekend of bushwalking, mountain climbing, study of native animals, scientific research and evening social gatherings around a large fire.

The scenic magnificence of the area had been long recognised by early explorers as far back as Abel Tasman in 1642, who had named the island to the south of the Freycinet Peninsula, Schouten Island after a member of the Council of the Dutch East India Company.

Much later well known writer Louisa Meredith, daughter-in-law to George Meredith the famous early settler to the Swansea area, wrote many articles about the beauty of the Peninsula and Wine Glass Bay after her first visit there in 1853.

But it was the Tasmanian Field Naturalists Club, who was perhaps, the first conservation group in Tasmania, which appeared to be the most influential in the right circles because their lobbying was finally rewarded in 1916 when the John Earle Tasmanian Labour Government declared the Freycinet Peninsula, along with Mt Field, the first two National Parks in Tasmania.

As time went by and with more lobbying by conservationists, Schouten Island became part of the National Park in 1977 and the Friendly Beaches in 1992.

The history of this part of our Island goes back long before Tasman, however. Aboriginal middens and artefacts found at Coles Bay and Swanwick are evidence of frequent visits by indigenous people for thousands of years. Indeed, Silas Cole, after whom the town was named and who is thought to be the first permanent settler to Coles Bay, made part of his living from burning the shells from the middens to make lime.

Prior to that, in 1820 American, Captain Richard Hazard, was reported to be whaling in the area and using the Fisheries as a base. Newspaper reports at the time told of several conflicts between his men and Aborigines. In the 1840s Swansea farmer Francis Cotton shipped cattle to Schouten Island for grazing and the Garland Brothers began coal mining. A jetty and tramway was built but the Garland Brothers venture proved unsuccessful. The mine was then taken over by the Government and leased to the Australian Smelting Company in 1848, who appointed Edward Crockett as manager. Sixty convicts were sent to the mine as labourers, and although at one stage they were producing around 130 tonnes of coal per week, the coal seams were only small pockets and soon ran out.

Except for tourism, the Freycinet Peninsula itself has been relatively free of industry over the years. Cooks Beach area was subject to some farming and wattle bark stripping in the latter part of the Nineteenth Century. The stone hut near the beach, last occupied by the Cook family, still stands and provides a good shelter in bad weather for bushwalkers. A small granite mining operation took place further north near the Fisheries from the 1930s through to the 1970s and in the 1920s an attempt was made to build a railway into Coles Bay, along with a coal loading wharf. The plan was to offer large ships a safe port to load coal from the reserves at Seymour, Douglas River and Dalmayne. None of this was ever completed, however, but the railway formation was eventually used to provide a road into Coles Bay after the current township was surveyed around 1930.

Although the holiday and tourist potential of the area had long been realised, it was Harry Parsons who, after retiring in 1920, moved to the Fisheries and built a number of cabins, transporting his clients from Swansea by boat. He was followed in 1934 by Ron Richardson who built the Chateau Holiday Units (now Freycinet Lodge) overlooking what we now know as Richardson's Beach.

The name "Freycinet" has a nice ring to it and gives one the impression of an interesting place to visit. French Captain, Nicholas Baudin, on his exploration of the Southern Ocean in 1802-03, spent a number of months in Great Oyster Bay and wrote many paragraphs in his journals about the picturesque beauty of the area. His two leading officers were the Freycinet brothers, who I'm sure, would have been honoured to have the magnificent Peninsula bear their name.

One can only wonder what the reaction of early visitors and settlers to the area would be today if only they were able to return and spend a few days at the new, luxurious Saffire Resort.



Letter to the Editor

Vol. 43 No 9, 2010

To the Cagerattler

How many times do we have to listen to this stupid argument on the parking in St Marys.

There was a signed petition from the businesses in St Marys against parallel parking, sent to the Break O'Day Council the last time this was on the agenda.

As stated before, you do not hear all the feedback we receive on this issue from our locals and all the travelers that stop here. They love the parking exactly the way it is now.

All of them are willing to sign another petition if the need arises. They are also willing for me to send them the petition to be signed.

If you do not want to park on the angle side because it causes you grief, park on the other side... simple as that. End of story.

We have seen more near misses on the parallel parking side of the road, simply because people do not look before pulling out. Where on the angle side, you have to take care, stop and look before pulling out.

In addition, this crap about not losing parking spaces with parallel parking... all I can say is that you must not have paid much attention in your maths class.

I do not know where you received your information from, that this issue wasn't given the time of day. This was discussed over and over and over at the meetings and the plans were laid out on the tables, for all to view.

Every time, it was voted against parallel parking.

The original plan was drawn years and years ago, by a gentleman that has not lived here for years.

In your letter, you stated how wide the main street is. Then you say it is unsafe because you cannot see. Forgive me if I'm wrong, but if it's wide, doesn't that mean there is heaps of room. So why do you have problems reversing.

Roughly 90% of the shops on the main street are on the southern side. (angle parking side) Angle parking allows you to turn/cross broken lines in the centre of the road & park on the southern side of the street if you are coming from the western/Fingal side, with minimal disruption to traffic. (Confirmed by a previous Police Sergeant to be legal)

If parallel parking were in place, you would have to drive around the block or do a u-turn and do a reverse park, unless you were lucky enough to get two vacant parking places next to each other. An unlikely event because of the lesser number of parking bays provided by parallel parking, creating traffic delays.

The road through main street St Marys is a major link road whether we like it or not.

To do a reverse park for most people is difficult enough, which would be made more daunting by having a B-double or semi truck waiting for you to get it right. How many flustered, nervous wrecks do you want.

In addition, you have been rude to 13 businesses out of approx 22 for displaying their signs etc. out the front.

Plus we do not want any more trees to fill all the shops with their leaves, unless you would like an unpaid job in the cleaning of the street and businesses. More trees will block the line of sight, therefore the street will be full of more wares from each and every business. —————>

Where Is God?

A couple had two little boys, ages 8 and 10, who were excessively mischievous. They were always getting into trouble and their parents knew that, if any mischief occurred in their town, their sons were probably involved.

The boys' mother heard that a clergyman in town had been successful in disciplining children, so she asked if he would speak with her boys.

The clergyman agreed, but asked to see them individually. So the mother sent her 8-year-old first, in the morning, with the older boy to see the clergyman in the afternoon.

The clergyman, a huge man with a booming voice, sat the younger boy down and asked him sternly, "Where is God?". The boy's mouth dropped open, but he made no response, sitting there with his mouth hanging open, wide-eyed. So the clergyman repeated the question in an even sterner tone, "Where is God!?" Again the boy made no attempt to answer.

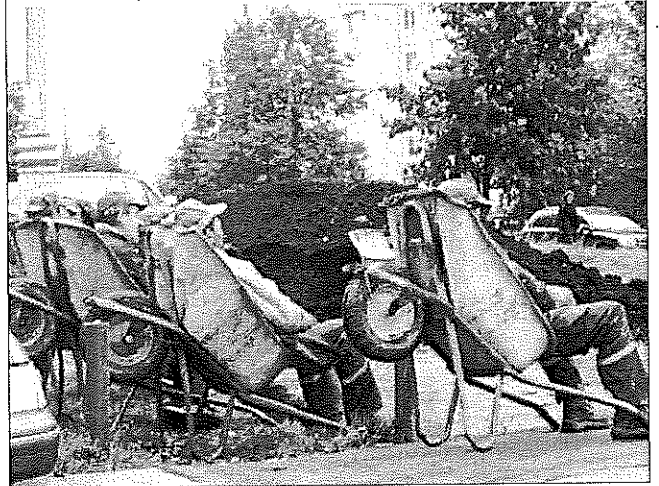
So the clergyman raised his voice even more and shook his finger in the boy's face and bellowed, "WHERE IS GOD!?"

The boy screamed and bolted from the room, ran directly home and dove into his closet, slamming the door behind him. When his older brother found him in the closet, he asked, "What happened?"

The younger brother, gasping for breath, replied, "We are in BIG trouble this time, dude. God is missing - and they think WE did it!"

Just saw a notice for a sale of recliners.

I have just figured out I have been using mine incorrectly...



ATTORNEY: The youngest son, the 20-year-old, how old is he? **WITNESS:** He's 20, much like your IQ.

ATTORNEY: What gear were you in at the moment of the impact? **WITNESS:** Gucci sweats and Reeboks.

ATTORNEY: Were you present when your picture was taken? **WITNESS:** Are you having me on?

There will be an on-going fight on this issue. We will stick up for our rights, and as business owners we will fight to the end.

We had sought advice from previous arguments over this, and they are being informed of this on-going stupidity.

Kim Watkins.

St Marys Rivulet Park Interest Group

A public meeting was held on the night of 13th September at the Holy Trinity Church Hall to discuss the future of the land at the corner of Groom and Story Streets, St Marys. Just over a dozen people attended and apologies and ideas were submitted by another dozen or so residents prior to the meeting taking place. There were great ideas offered, along with practical assistance should it be needed into the future.

There was general support for the idea of a community park combined with some associated art venture, although the detail was not settled upon. The Rivulet Interest group wants as many people from the community to be involved in this project as is possible.

Many ideas were discussed about what the site might be used for, some of the points of discussion included sculptures; the ability to give an arts space to the youth and involve the local schools; a simple picnicking area; building on the green spaces we already have in town and connecting the camping ground by a pleasant walkway to the town.

So many wonderful ideas came from this meeting and there was a strong sense of the community wanting to utilise this space and to build up the artistic side of the town in which we live.

The next stage will be for a smaller group to meet at the Healthy House and look further into ways in which this project could benefit all in the community.

We encourage anyone who is interested in this block of land and the future of it to become involved, even if just to talk through some ideas, or to voice any concerns that you might hold... this is hopefully going to be YOUR park at some time in the future. The small group involved to date include members of the Gorse Group and the Understorey Network. The members of the Rivulet Interest Group would like to thank all those who took part for their ideas and enthusiasm and welcomes new members, who can make contact with the group through Janet Drummond on 6372 2851.

Photo: Peter Troode.



Articles for any edition may be left at the St Marys Pharmacy. This also includes items for sale and wanted. Please ensure that your details are included.

SHOP LOCALLY AND SAVE.



www.fingalvalleyhistory.com

DALMAYNE COAL MINE HISTORICAL WALK

The St Patricks Head & Esk Valley Historical Society Inc is pleased to advise that the Dalmayne Coal Mine walk which had to be postponed in August due to bad weather has been rescheduled.

The walk is now planned for Sunday October 17th meeting at the Purple Possum in Story Street, St Marys at 10:00 am

Please be aware that, although the terrain is relatively flat, it is a 5 kilometre walk and will require participants to be reasonably fit.

Everyone is welcome to come along, enjoy the walk and a BYO picnic lunch, as well as hear the fascinating story of the ill-fated Dalmayne Mine.

For more details log onto our website (www.fingalvalleyhistory.com) or phone: Barry 6372 5752, Darlene 6372 2416, or Jim 6372 2127.

The Break O'Day Woodcraft Guild and Men's Shed

Is

pleased to announce that it will be holding
open air markets

When: Starting the 16th of October, 2010.
at 9:00am. Then every 3rd Saturday.

Where: The Old Railway Goods Shed St Marys.

Cost: \$10.00 per site, this includes your membership to the Guild. (As an ordinary member)
Contact: Reon or Wendy on 6372 2094

A limited number of tables can be supplied. So book early

Dick Adams MP

Federal Member for Lyons

Please contact one of my offices if I can be of any assistance

53B Main Road	58A High Street
PO Box 50	PO Box 271
Perth, Tas 7300	New Norfolk Tas 7140
Ph 6398 1115	Ph 6261 3366

Toll free 1300 132 689
Email D.Adams.MP@aph.gov.au



**WORKING WITH YOU FOR A
STRONG COMMUNITY**

Written and Authorised by Dick Adams, 53B Main Road Perth

Bicycle safety day

On Thursday September 16, the Lions Club of St Marys Inc. held a bicycle safety day at the St Marys Lions Park.

The aim of the exercise was to give away and install flashing bicycle lights to help educate youngsters with bike safety and get the message through that just because you can see cars, doesn't mean that cars can see you.

This is a flow-on from the bicycle helmets given away by St Marys Lions Club during the past 18 months.

This 'light project' was a joint one with the Break O'Day Council, Lions Club of St Marys and the Break O'Day Road Safety Committee.

Sergeant Sharmaine Ward was also in attendance, representing the Police.

Although the day was rough and windy, 16 children turned up with their bikes and the flashing lights were fitted by St Marys Lions Club members.

A free BBQ was provided by Break O'Day Council, with Cassie Male, Jenny Singline and Chris Hughes cooking the sausages. A large crowd gathered when it was time to eat! (the feathered kind).

All in all a good day and a worthwhile exercise. *Another project from your local Lions Club.*



RATES INSTALLMENT REMINDER

This is a reminder that the first rates installment for 2010/2011 is due on the 24 September 2010. If you would like to take advantage of the discount period it is also due by the above date.

Office hours will be extended to assist with the payment of rates on Thursday 23 and Friday 24 September from 8.30am – 5.00pm.

Des Jennings

GENERAL MANAGER



News item: John McGiveron. Photo: Peter Troode.

**Burton
Lawyers**

James Burton LLB(Hons) BSc

Barrister & Solicitor

- **Conveyancing**
- **Family Law**
- **Court attendances**
- **Wills & Estates**

9 Pendrigh Place, St Helens

Open • Monday to Friday • 9am to 5pm

6376-2525



Bugs, Beanies and Busy Hands

There's been a quiet explosion of quilts and knitwear in our local community – all handmade, and all to be given away. It says a lot for the skills and generous hearts of the women who have been so willing to donate their time and (often) materials to make beautiful items for children in need.

The 'Snug as a Bug' project, an initiative begun by Rita Summers of Gone Rustic, St. Marys, has been operating for just over 2 years. During this time a total of 27 quilts have been made by Tasmanian and interstate quilters for orphan children in the former Soviet Union. These (and a boxful of donated teddy bears) have just arrived in Melbourne from Tasmania, ready to be shipped off overseas. (Robyn and Peter Miller, of Sewknit in Launceston, kindly offered to deliver them on one of their regular trips to Victoria.)

Each quilt measures 1 metre by 1 metre, and features at least one 'bug'. The quilts are colourful and cheerful, and will be a tangible keepsake of love and compassion from the other side of the world for orphans who have already known too much of neglect and abuse in their short lives.

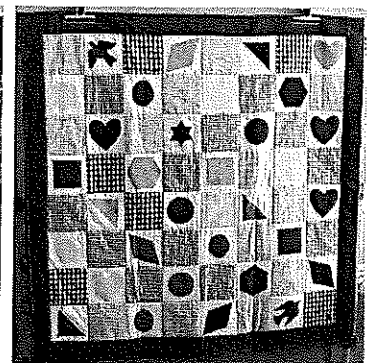
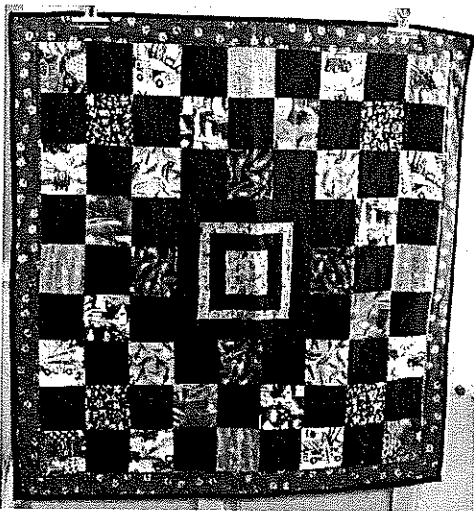
In addition, the Rustic Ragamuffins stitching group (which meets weekly at Gone Rustic) makes from 4 to 6 quilts annually for distribution in the local community. This is done through Thom Ryan of the East Coast Counselling Service, based in St. Helens. Some of these quilts went to bushfire victims in Break O'Day in late 2006, others have been given to families and individuals experiencing trauma or financial difficulties.

During 2010, many children's knitted vests, and beanies have also been made, as well as dolls and teddy bears. So far, scores of these have been donated to Operation Christmas Box, as well as to Africa and Mongolia. The members of Rustic Ragamuffins have not only been busy themselves, but have encouraged others to knit as well. This means that even some people who are housebound have been able to contribute.

Fabric and wool have been donated by generous community members also. These are used to make the quilts for distribution through Thom Ryan, and for the knitted vests, beanies and toys. (Snug as a Bug quilts are made using your own materials.)

Would you like to participate in any of these activities? You are invited to drop in to pick up information and/or patterns from Rita at Gone Rustic, 37 Main Street, St Marys, or you will soon be able to download them from the website (www.gonerustic.com). Alternatively, you can meet with like-minded people at Rustic Ragamuffins from 7-9 pm each Wednesday night. (\$5, which includes a cuppa and homemade cake).

There is also some wool available which has been donated for anyone who wants to knit items.



*Knitting photos: Lillian McRostie.
Quilt photos: Rita Summers.*

About St Helens Landscapes



Mark Burgess - Mobiles: 0419 756 131

A.S.H. Landscaping

Offering a full Landscape - Consultation -
Construction & Detail Service

BRICK EDGING	PAVING
GARDEN BEDS	STONEMWORK
RETAINING WALLS	MULCHING
ROCK & WATER FEATURES	LAWNS
MAIL BOXES	PLANTING

PRE MARKET YARD / GROUND SERVICE

TREES SHRUBS HEDGE PRUNING

LAWN MOWING GROUNDS MAINTENANCE
(NO JOB TOO SMALL)

FULLY INSURED A.B.N. 56037049163

MARK BURGESS Ph: 0419 756 131 / 6372 5556

Tim Morris MP

Tasmanian Greens Member for Lyons



Tasmania

*I say NO to selling off
our School Farms and
Research Stations*



New Address: Shop 9, Covehill Shopping
Centre, Bridgewater 7030

Phone: (03) 6263 3801

E-mail: greens@parliament.tas.gov.au

www.tas.greens.org.au

Authorised by Tim Morris MP, Parliament House, Hobart 7000.

Strawberry Jelly

EFTPOS — LAYBY

42 Main St. St Marys Ph: 6372

1/2 PRICE

BLENDED ESSENTIAL OILS.

CHOOSE FROM:

ABUNDANT ENERGY
SPACE CLEARING
EASY BREATHING
CLEAR FOCUS
ZEN HARMONY
LIFE'S PASSION
SNUGGLE TO SLEEP
JUNGLE FEVER

OPENING HOURS

MON—FRI 10AM—4PM—SAT 10AM—1PM

When it comes to the crunch our peanut butter's best!

Freshly ground while you watch,
Purple Possum's 100% pure peanut
butter is made from Queensland
Kingaroy peanuts to the texture you
love — smooth, medium or crunchy.
A free taste will convince you it's the
best you've ever had — and just
perfect for toast or
sandwiches! Top value as well —
\$2.40 for 250 grams!

And the Possum's Special Offer —
Ere Perez Natural Cosmetics —
15% off until Thursday 7 October.

Purple Possum

Wholefoods & Café

5 Story Street St Marys. Phone 6372 2655.

DESIGNER HAIR STUDIO

46 Main St St Marys Ph: 6372 2108

SPECIALISING IN KEUNE PRODUCTS

TUESDAY SPECIAL
FREE EYEBROW WAX
WITH EVERY COLOUR SERVICE

FRIDAY FRENZY
\$60 NAIL SETS
&
HALF PRICE TRIM WITH ALL
PERMS & COLOURS
(2 WEEKS ONLY)

For Beautician appointments
phone Sally on: 0400 837 984.
or visit the salon.

Watch this space for our fortnightly specials.

TUESDAY - FRIDAY 9.30AM - 5PM

PHONE 6372 2108 FOR APPS.

BEAUTICIAN AVAILABLE TUESDAYS & FRIDAYS.

ST MARYS NEWSAGENCY

Phone: 6372 2143



Open 7 days a week for your convenience.
6am - 7pm Mon. to Fri. 7am - 6pm Sat. & Sun.

CALOWS BUS DEPOT

AURORA PAYG

PRE-PAID MOBILES

HTC WILDFIRE \$349.

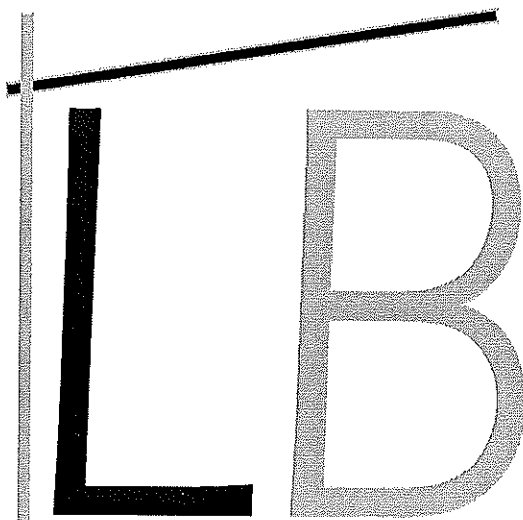
LG VIEWTY SMART \$249.

ALL THE PHONE CARDS
YOU COULD NEED



Collect 'em all !!

PRICED AT JUST \$2.95 EACH



LINFOOT BUILDING

CC: 2157T ABN: 71215873017

FOR ALL YOUR BUILDING NEEDS AND
FREE QUOTES PLEASE PHONE

MORRIS; 0428 722 472

JAMES; 0458 805 929

EMAIL;

LINFOOTBUILDING@BIGPOND.COM

Sharing With Friends

Fingal Valley Neighbourhood House
invite you, your family and friends to our

Beef 'N' Burgundy night

Friday 22nd October at the Centre

6.30pm for 7pm.

\$25 per head.

Come along, dressed in a black and
white theme, and enjoy a scrumptious
three course meal prepared by Jeff
Peacock, in our transformed room.

Please contact Debbie at the house on
6374 2344 for all bookings and
enquiries.

Bookings close 18th October so get in
quickly for this fabulous night out.

Free drink on arrival.

So don't forget...

Friday 22nd October,

See you there.

**'KIDS IN
CARE'
CHILDREN'S
FUND**

are holding a

**'GET IN THE MOOD
FOR CHRISTMAS'
PARTY**

on Saturday, 6th November
at the St. Helens Bayside Inn

Time: 7.30 pm

Cost: \$30 per person which includes
a drink on arrival, supper and great
dance music by Kristy Tucker.



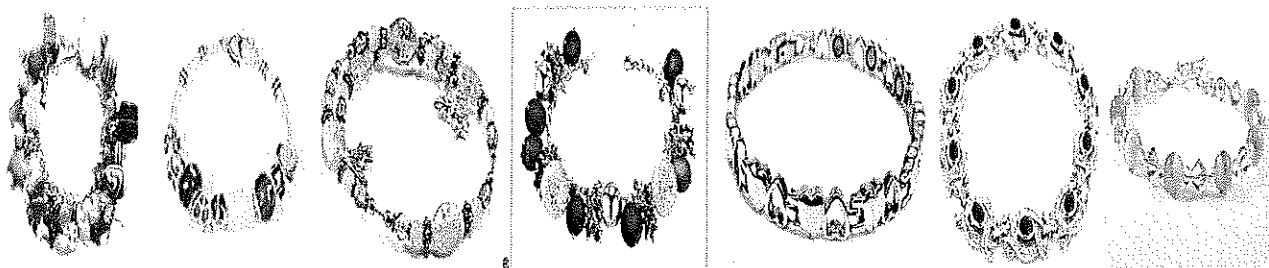
SEPTEMBER SPECIAL



IF YOU BRING THIS ADVERTISEMENT TO THE PHARMACY
DURING SEPTEMBER YOU WILL RECEIVE

20% OFF

ALL BRACELETS IN STORE



ST MARYS PHARMACY - MAIN ST - ST MARYS PH: 6372 2844

The Say Cagerattler

From the outset don't get me wrong. I'm not having a go at the SMACD set up at any time in the recent past. Far from it. All I suggest is that perhaps, given all the possible opportunities that exist these days, that the very original form of SMACD be relooked at again.

Around two decades ago a very community minded person suggested that there was a certain amount of apathy within the community that was holding us back a little. Housing prices were down, there was very little job training or job search chances and the town looked tired and dilapidated. A public meeting was organised and from memory around 200 people turned out. From that meeting a hard working committee formed the first ST MARYS ASSOCIATION for COMMUNITY DEVELOPMENT (SMACD).

As all of us who remember those fantastic times, the pace was frenetic. People would come to the meeting, throw up ideas, offer to provide assistance or equipment and generally aid if they could. All sorts of fundraising ideas came to the fore and with assistance from Local State and Federal government avenues, several projects taken on and completed.

One of the most successful was the Community Access Centre located in what is now the Pharmacy building. Unfortunately it was only a pilot project with a finite run time, but in the year or two it operated under SMACD it helped provide training opportunities to quite a few people as well as allowing for government and private companies to have a shop front in the town. It was great but needed follow up funding that wasn't feasible at the time.

The original SMACD built parks, helped with physical and organisational skills and developed the first Streetscape Design which is still a great document to peruse. IF ONLY...

Whilst I fully respect and support following SMACD's I don't think they can have the same impact as the first few years unless... We consider returning to those very hands-on days for example. With the Recreation Ground development and the constraints of tight budgets at local government level, perhaps the original SMACD concept would work really well to complete and enhance this wonderful and already quite successful service. Maybe we could just think about it and if there's enough interest and response we could really add again to this community. Let's hope so.

What do you think?

Advertisement

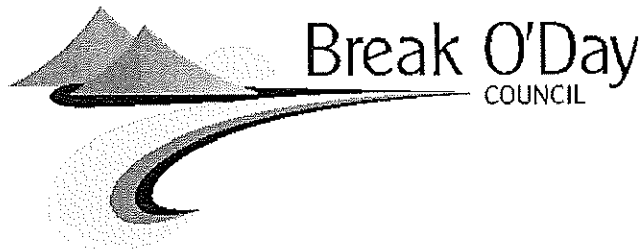
REON JOHNS

Councillor

Like to raise an issue? Feel free to contact me on:
mobile 0429 722 091 or Fax 6372 2098.

On the last Thursday of each month I visit:

Fingal 8.30am-9.30am at the Neighbourhood House
Mathinna 10am-11am at the Post Office
St Marys 12pm-1pm at the Bakery
St Helens 2pm-3pm at the Neighbourhood House
Scamander 3.30pm-4pm at the Mouth Café.



COUNCIL MEETING HELD ON MONDAY 13 SEPTEMBER 2010

The following information is provided as a brief of matters that were discussed and decisions that were made at the Council Meeting held on Monday, 13 September 2010, at 10.00am at the St Helens Council Chamber.

The following Notices of Motions were submitted by Councillors for investigation or full reports to be provided to the October Meeting of Council:

- Rescinding of the motion regarding the land on the corner of Storey and Groom Streets, St Marys – CARRIED
- Mural on the Newsagency Wall – Laneway to ANZ Car Park – CARRIED
- Installation of barricades to stop vehicles entering the grassed area in Thompson Court, St Helens - CARRIED

Other items listed for information and decisions by Council were as follows:

Removal of disused underground fuel tanks – Correspondence will be forwarded to the Mines Department regarding alternative solutions for the removal – CARRIED

- Amendment to the Rating Exemptions Policy – CARRIED
- Development of Schier Reserve, Falmouth – CARRIED
- Amendment of Title CT141433/1 – Right of Way over Park – St Marys – CARRIED
- George River Catchment Management – CARRIED
- Investigations into Parking Signage – CARRIED
- Alterations to Councils Archive Shed – CARRIED
- Amendment to Delegation No 73 to the General Manager for Financial Donations – CARRIED
- Request for Financial Assistance for Tourism Promotion – Council agreed for presentation by the St Helens and Districts Chamber of Commerce for this item – CARRIED
- Break O'Day Health Resource Association – Request for support for grant application - CARRIED
- Information Reports were provided for the following areas:
 - Financial Reports and Budget Variations
 - Business and Corporate Services Department Report
 - Valuation and Rating Workshop
 - Visitor Information Centre
 - Asset Management Plan
 - Works and Infrastructure Report
 - Community Services Report
 - Development Services Report
 - General Manager's Report
 - Update on Municipal Management Plan (MMP)

A full set of Council's minutes are available on the Council Website at www.bodc.tas.gov.au alternatively, hard copies are available at the St Marys and St Helens Libraries and the St Helens History Room. Copies can also be requested free of charge by contacting Council's Executive Officer on 6376 7900.

Rae & Partners
Lawyers Barristers & Solicitors
113 Cimitiere St Launceston

Visiting :

St Marys Community Health Centre

Alternate Tuesdays : 9 am – 10 am

Ph: 6337 5555 For appointments.

EAST COAST SURVEYING
Consulting surveyors and land planners.
Mark Anderson 6376 1972
We can help you.

- Buying a property?
- Planning a development?
- Unsure of your property potential
- In dispute with an adjoining owner?





Presents

Music at St Marys Market

Next Market: Saturday 2nd October
Time: 9.00am to 2.00pm

The increasing popular market at St Marys is proud to have Don Ives and all that Jazz playing from St Helens. Come and enjoy the music while shopping or simply browsing over 20 stalls full of locally grown produce, homemade items, second hand goods, lovingly prepared massage oils and loads more...

Haircuts will be available at a small cost of \$15.00. Enjoy a sausage sandwich prepared by The woodcraft Guild or a curry followed by a Devonshire tea served from Kathy's Kitchen.

This is going to be a great day. Come for a chat, enjoy the music while shopping or having your hair cut and be part of your community.

Don't forget to purchase a raffle ticket. You could be the winner of a wheel barrow loaded with goodies including a ladies spade, potting mix, herb/strawberry planter, rain gauge, quality soaps and more...

Thankyou to the St Marys Supermarket, the Suncoast Garden Centre, NE Landscaping Supplies, Strawberry Jelly and the St Marys Newsagency for their generous contributions to the raffle!

A huge thankyou to Bob and Warren who played at the last market. Everyone enjoyed themselves and loved the music!



Photo: Owen Hughes.

AGM

Fingal District Progress Committee Inc.

Would like to advise that their AGM will be held on Thursday 30th September 2010 at 7pm at the Fingal Valley Neighbourhood House.

Election of Office Bearers (President, Vice President, Treasurer, Secretary and Public Officer) will take place at this meeting. Nomination forms can be collected from Hayshed, Fingal and returned by **20th September 2010** to: The Secretary, PO BOX 43, FINGAL, TAS. 7214. All welcome to attend. Signed: L Rhodes, Secretary.

OUT OF THE WOODWORK

Wendy Brennan, Secretary 0408 656 014 Home:63722094

We have had many enquiries about our ad for the Guild's Markets which will commence on the 16th October. We have been working in conjunction with the **Tasmanian Regional Arts and their market committee. Namely, Sue Nelson and Colin Smith**, who have given us their full support behind an open air market which will be held on the third Saturday of each month and will compliment the indoor markets in the hall.

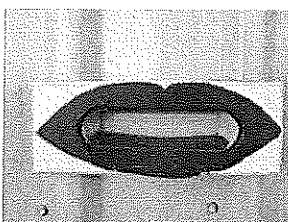
Members would like to express their gratitude to Sue and Colin for being open to our idea and have collaborated with us in planning and advertising. Their assistance has been paramount in what can be achieved when two community groups work along side each other for the good of an outcome.

Thankyou to **Lynne Dawes and Bruce Glatte** who supplied the club with some worthwhile second hand building materials, it was very much appreciated.

Finally, thank you to the **Fingal Valley Neighbourhood House** who, by allowing the Guild to join as a sub-committee has alleviated all obstacles associated with insurance which has provided the Guild the opportunity to run an open market.

The Guild meets on the last Saturday of the month at the Old Railway Goods Shed at **2.00 pm**. The Guild is open Monday, Wednesday, Friday and Saturday. Any other times by appointment.

A supportive environment where traditional woodcraft skills are shared



For all the people who have made enquiries about the red lips. It's our letter box!

Photo: Wendy Brennan.

Reminder

The Guild's Open Air Markets will commence on the 16th October, 2010 at 9am.

Venue: Old Railway Goods Shed

Cost: \$10 per site which includes club membership as an (ordinary Guild member).

Limited tables

Further inquiries Phone Reon or Wendy 637 22094



White Sands Estate
IRONHOUSE POINT • TASMANIA



**White Sands Estate now has so much more to offer:
dining, shopping, recreation and of course our special events!!**

Providore:

Open daily **8.30am – 5.00pm**

Come and explore the variety of goods on offer including a wide selection of Tasmanian produce including our own ironhouse beef, fresh fish, fruit and vegies. We also stock a wide variety of shop items including icecreams, chocolates & chips to keep the kids happy for hours! You can also collect your daily newspapers here (if you require special papers other than our regular supplies, please let our sales staff know the day before and we will order it in for you).

Also call in and see our gift range featuring Tasmanian arts and craft.

Brewhaus Café and Bar

Open Everyday for Lunch and Dinner 11am – late

Open for Breakfast on Saturdays and Sundays from 8.30am

Come and join us for IronHouse Brewery tastings, specialty teas & free trade coffee, cake, and bistro style meals. Relax and soak up the atmosphere while the children enjoy playland!



Le Blanc Fine Dining

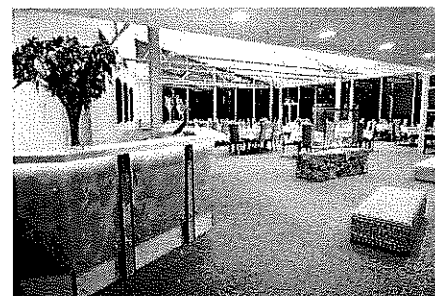
Open for **Lunch Friday to Sunday 12 - 2pm**

and **Dinner Tuesday to Sunday 6pm – late**

A quiet area to have a wine and platter before sitting down to enjoy Tasmania's best fine dining experience.

To ensure that all our guests receive a high standard of service.

Bookings are preferred by phoning 6372 2228.



Cinema

Watch our 3.30 and 6.30pm children's screening or the teenagers and parents can enjoy a flick from 8.30pm onwards- complimentary use when dining or just \$5. Contact reception for movies showing on 6372 2228.

Up and Coming Special Events

AFL Grand Final Day

Get some friends together and join us at white sands estate - watch the game on the big screen in the cinema or brewhaus cafe and bar.

Come for lunch beforehand and then enjoy a few beers and we will provide the free nibbles during the game.

French night Saturday 8th of October 2010

French inspired food and wines presented by Kirk.

5 courses \$110.

Individual bookings set time of 6.30 for 7 pm, so that meals and wines can be presented before each course.

Beefeaters- 5th of November 2010

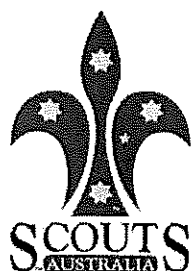
Five sumptuous courses featuring the best of Tasmanian beef for only \$60 per person, True comfort food including a delectable dessert. 6.30 for 7pm start. Children also welcome.- kids club in the brewhaus fully supervised for \$20 per child.

Ironhouse Beer, Bangers and Blues Day-Saturday the 27th of November 2010

Enjoy a banger on the deck at the Brewhaus Cafe and Bar or dine a la carte whilst chilling out to the sounds of Pete Cornelius **LIVE** from 11 am onwards.

Call reception on 6372 2228 for any enquiries or reservations.

St Helens Sea Scouts & Cubs



CUBS

7 ½ - 11 year old girls & boys

Starting Soon!

Limited spaces

All enquiries to Jane on 0412 803 027

Samaritans Purse/Operation Christmas Child

Our appointed representative for the East Coast is Yonah Denman who lives in St Helens and can be contacted on ph. 6373 1820. Anybody wishing to participate in the project Operation Christmas Child or requiring information or resources such as empty shoe boxes, brochures, a promotional DVD etc should contact Yonah Denman on ph. 6376 1820.

That is also the number to phone to make arrangements for delivering filled shoe box gifts this year during our official collection period October 1st - 25th.

Information on how to pack a shoe box for Operation Christmas Child can also be found on the Samaritan's Purse Australia websites

www.samaritanspurse.org.au or

www.operationchristmaschild.org.au.

The Valley & East Coast Voice Guidelines.

- *Opinions in letters published are not necessarily the views held by the editor and voluntary workers.*
- *Our pages will remain open to fair and honest criticism, so that on all questions, both sides may be presented, but any letters containing personal attacks or hinting at libel or slander will not be accepted.*
- *Please do not attack the editor, the paper or the authors of previous letters.*
- *Letter writers will be given the chance to respond over a suitable period of time, but anonymous and/or non-de-plume letters received as from 11-02-10 will not be published. Subjects may be closed at the editor's discretion.*
- *Please make sure of your facts. Do not write letters just to let off steam. Keep letters short and simple. Letters restricted to 300 words or less will be given preference.*
- *All letters arriving by post must be signed, including a printed name and also contain your contact details, such as full name, address and phone number.*
- *All letters sent by email must contain your contact details, such as full name, address and phone number.*
- *All letters left at drop-off points must have a signature, plus a printed name and also contain your contact details, such as full name, address and phone number.*

BREAK O'DAY STITCHERS FRIENDSHIP DAY

Our annual Friendship Day is on the 15th October at St Helens Neighbourhood House in the Bungalow.

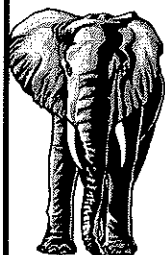
For \$15 you will receive morning tea and lunch, lucky door prize, trade table and much more.

Come along and meet old and new friends and have a good time making one or two small projects to take home.

Bring along your latest stitching project for 'Show and Tell'.

Book your place by phoning Elsie 6376 1663 before the 4th October, 2010.

MT ELEPHANT FUDGE



Mt Elephant Fudge
for all your sweet desires!!!

Trading Hours

Thursday, Friday, Saturday, Sunday & Monday
10am - 5pm

GREAT New Gift Lines arriving:

Puzzling Puzzles, Rangeview Vegetable Seeds & more

I look forward to seeing you all soon!!



"HANDMADE in ST MARYS"



Kids Art Club - "Mosaics" Weds 3-4.10
 Starting August 4th \$12 per week for 5 weeks

"Textiles and Fibre"-Exhibition & Live music
 Sat Sept 4th 6.30pm -9pm

Mosaic group has moved to SAT 2.30
 \$20 Tuition & basic materials supplied
 \$12 Basic materials supplied
 \$5 Byo Project (can be anything arty)

Tues & Weds Afternoons
Guitar, bass or drums with Sim \$15 - 20 mins

Weds 1 - 2.30 - Garden Sculptures (clay
 Modelling, Ferro Cement, heble carving)
 with John McColl \$20

1st **Wed** of every month 5 - 6.30
Life Drawing (Model and materials provided.
 No tuition) \$12 No bookings required

Big Shed has a recording studio & **audio engineer** available Thurs, Fri & Sat for solo/
 band recordings, radio ads, tape & records
 to CD, PA Hire etc.

Big Shed has art space for hire, artists
 available for commissioned artworks,
 graphics and art parties, as well as local art
 & craft for sale.

24837 Tasman Highway, St Helens.
 Phone **0428725228**
Bigshedstudios@yahoo.com

New Opening Hours
Mon 11-3
Tues 11-7
Wed 11-7
BIG SHED STUDIOS



St. Helens Electrical

ROD SHAW
 LIC: C00489

Domestic, Commercial, Industrial:
*Wiring and Repairs, Rewires,
 Underground.*

Home Heating:
*Advisory, Sales & Installation of heat
 pumps and fixed heaters.*

Lighting Specialist :
*Interior and exterior, Advise,
 Sales and Installation.*

Ph: 6372-5522 Mbl: 0407-615-072
 2 Lagoon Esplanade, Scamander 7215



BOBCAT HIRE

- * Site cleaning & leveling
- * Excavations
- * Post hole digging
- * Landscape preparation

SAVE HOURS OF HARD WORK.
GIVE MARK A CALL
Ph: 6372 2145.

HARRIS FUNERALS

Lindsay & Diane
 (D. Bailey & son) A.F.D.A

Ph/Fax: 6376 1153 Mob: 0418 133 420

Office & Residence:

114 Cecilia St
 St Helens

Chapel:

46 Tully Street
 St Helens

**We are here when you need us
 to arrange Burial or Cremation.**

Pre-paid and pre-arranged funeral plans are available.



Ransley's Appliance Service

P O Box 136
 Scamander Tas 7215

- Washing machine NOISY?
- Refrigerator runs too LONG?
- Clothes dryer blows cold AIR?



**Then you need the service
 of our technicians.**

Ring us on: Scamander: 6372 5307
 Mobile: 0428 761 811

Yanni's

Café / Laundromat / Catering



25 Quail St, St Helens, Tasmania. 7216.

Ph: (03) 6376 2629

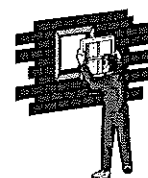
Mob: 0400 054 110

email: marycporter@bigpond.com

EAST COAST GLASS

Falmouth Ph: 6372 5361

- ▶ Glass repairs
- ▶ Shower screens
- ▶ Wardrobe doors
- ▶ Double glazing
- ▶ Aluminium windows
- ▶ Security doors



**Locally owned and servicing
 the East Coast.**

**Call David and Anne Cannon
 for prompt and reliable service.**

EYELINES

looking good seeing clearer

We will be offering a local and friendly service at

	St Marys	St Helens
October	7th 28th	8th 29th
St Marys Community Health Centre & St Helens Hospital		

If you want a professional consultation with one of our qualified optometrists then contact us on
6343 6333
 All consultations are bulk-billed to Medicare.

GREAT TRUTHS THAT LITTLE CHILDREN HAVE LEARNED:

- 1.No matter how hard you try, you can't baptize cats.
- 2.You can't trust dogs to watch your food.
- 3.Don't sneeze when someone is cutting your hair.
- 4.You can't hide a piece of broccoli in a glass of milk.
- 5.The best place to be when you're sad is Grandma's lap.

St Marys Market

Rain hail or shine the markets will be held on the 1st Saturday every month in the community hall 9am till 2pm.
 New stall holders welcome

Phone Colin 03 6372 2707



CA TEX MECHANICAL R
 PH 2 2335
 TIRE LUGS REPAIRS BATTERY'S
 41 Main St. St Marys Tas 7215
 Fax: 6372 2822 Mob: 0419 503 109

East Coast Phone & Communications

- * Telephone & Data cabling
- * Commander Systems
- * Sound System cabling
- * TV Antenna & Tuning
- * Digital Set Top Boxes, supplied & installed where reception available.



PO Box 29,
 St Marys 7215
 Ph: 6372 2402
 Mob: 0409 959 121

John Heron
 30 years
 experience
 ACA Licence

Stallholders Market Inc.

Is a non profit organisation holding markets every Saturday from 8am in St Helens, at the Library car park. There is a variety of stalls and the fees charged to stall holders is donated to various charities.

For stall booking and other inquiries, please phone Marilyn on 6376 1858.

THANK YOU

Thanks to all the Aurora crew last Friday, who got power restored to Mt Elephant.
 Much appreciated.
 Ann.

Scamander Beach Surf Shop

6 Lagoon Esplanade
 Scamander

Ph: 6372 5529

Scamandersurf.com

Bathers Wetsuits DVDs
 Clothing Footwear
 Bodyboards

Surfboards:

Milch McTavish
 Surftech Bic G Boards

Bay Surf Shop

2 Pendrigh Place
 St Helens

Ph: 6376 1755

SPLASH

ST MARYS

*You swill it, we fill it!
You dump it, we pump it!*

Water cartage
Septic pumping

Contact: Mick

0488 777713

MLN

Painting

FREE QUOTES

ENTERPRISES

East Coast & Fingal Valley



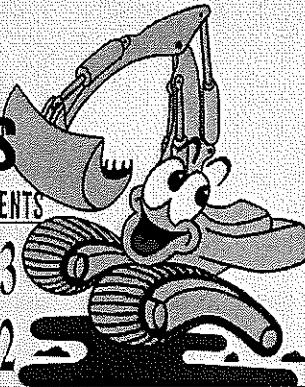
MICK: 0439 722 718

C & D EXCAVATIONS

FOR ALL YOUR EARTHMOVING REQUIREMENTS

Phone : 03 6372 2033

Mobile : 0439 722 032



LOCAL OWNER - OPERATOR
OVER 20 YEARS EXPERIENCE

Ph : Dana or Craig

6372 2033 /0439 722 032

Incorporating all your needs in:

DAMS, ROADING, FIREBREAKS, LAND CLEARING, HOUSE SITES, DRAINAGE, BRIDGE CONSTRUCTION.

- ◆ ROAD GRAVELS
- ◆ TOP SOIL
- ◆ SCREENED TOP SOIL
- ◆ SAND
- ◆ ROCKS
- ◆ ON SITE SCREENER 20mm to 75mm (TURN YOUR RUBBISH INTO TOP SOIL)
- ◆ 20 TONNE EXCAVATORS WITH TILT BUCKET & RIPPER, ROCK & LOG GRAB & QUICK HITCH
- ◆ D 65 KOMATSU DOZER, RIPPER & TILT BLADE
- ◆ 10 YARD TIPPER
- ◆ COMPACTION ROLLER
- ◆ WHEEL LOADER

AND MUCH MORE

MEALS ON WHEELS ROSTER

Sept / October	St Marys	Fingal
Monday 27th	Pam Lynch	June Hall
Tuesday 28th	Yvonne Reed	
Wednesday 29th	Val Spencer	
Thursday 30th	Yvonne Salter	
Friday Oct 1st	Claire Bean	
MOW Contact Phone: 0488 384 344		
Monday 4th	Wendy Dawson	Neighbourhood House
Tuesday 5th	Pam Bretz	
Wednesday 6th	Barbara McAlister	
Thursday 7th	Heather Griffiths	
Friday 8th	Claire Bean	Neighbourhood House

Church Services

Catholic Parish of St Marys

Sr. Lorraine Groves
Parish House. Ph: 6372 2252
Mob: 0409 172 741

1st Sunday: MASS

St Helens Vigil 5.00pm
Bicheno 9.00am
Fingal 11.30am

2nd Sunday: LITURGY

St Helens Vigil 5.00pm
St Marys 9.00am
Bicheno 9.00am
Fingal 9.30am

3rd Sunday: MASS

St Helens Vigil 5.00pm
St Marys 9.00am
Bicheno 9.00am
Fingal 9.30am

4th Sunday LITURGY

St Helens Vigil 5.00pm
St Marys 9.00am
Bicheno 9.00am
Fingal 9.30am

5th Week Liturgy

St Helens 5.00pm
Bicheno 9.00am
St Marys 9.00am
Fingal 9.30am

Enquiries for
Baptisms & Weddings
Ph: 63 31 4377
Church of Apostles
Presbytery
Officer Hours:
10.00am - 3pm.

Anglican Parish of Northern Midlands

Avoca: 11am 2nd/4th Sundays
Fingal: 3 pm 1st/3rd Sundays
Mathinna: 3pm 2nd/ 4th Sundays
Ross: 11am 1st/3rd Sundays
Campbell Town: 9am every Sun.
(3rd Sunday -Family Service)

Anglican Parish of Break O'Day

Ph: 6376 1144
St Helens Every Sunday
8 am and 10.30 am
Kanga Sunday School
10.30 am - 12 noon
every Sunday for children 5/12 yrs
St Marys every Sunday 10 am
Pyengana: Kids Church,
2pm - 4th Sunday every month.

Salvation Army TUESDAY JAM

3-5pm every Tuesday.
excepting school holidays.
Envoy Melanie Norton Ph: 63722099

Break O'Day Uniting Church

The Manse St Helens
Ph: 6376 2405
St Helens 9.00 am
Fingal 11.15 am

Seventh Day Adventist

Hodgeman Street Scamander
Sabbath School 10 am
Divine Service 11 am

Contacts for Valley Voice

PH: Judy: 6372 2155
email: judith.spilsbury@telair.com.au
Accounts: Mary: 6372 2328

Please leave written material at the
St Marys Pharmacy,
Main St, St Marys,
or post: C/- Post Office, St Marys Tas 7215

Advertising: 2010

Classifieds: 25 words or less: free
Community notices: free.
Small boxed ads, Garage sales, Greetings.
Thanks etc. \$12.
¼ page \$20. ½ page \$30.
Full page \$50.
1 year posted subscription \$40.

On Air Now!

Vision FM 88.0 at
St. Marys, St Helens
and Fingal.

Robbo isn't alone at breakfast anymore.
Shelley has joined him and
they are calling the program
'The Journey'

100% positive music & talk all day long;
connecting faith to life.

National Vision Radio Network.
Phone 1800 007 770.
web www.vision.org.au

St Marys Online Access Centre Opening Hours:

Monday 10am -3pm
Tuesday 10 am-4pm
Wednesday 10am-4 pm

Thursday 10 am - 3 pm
Friday 10 am - 3 pm
Saturday 11 am - 2 pm

Ph: 6372 2005

ST MARYS OP-SHOP

TRADING HOURS:
10AM — 3.30PM MON TO FRI.
PH:6372 2733.

MONDAY 27TH \$2 BAG SALE

EXCLUDES = CURTAINS,
TOWELS
AND BEDDING.
COME IN AND GRAB A BAGFUL.
Ph: Tracy 6372 2733

2011 SCHOOL UNIFORM ORDERS

ADVANCE NOTICE!
Students will receive their order forms on Monday 20 September. Remember to ask your child for their form on that day.

Please have orders in to the school office

BEFORE Tuesday, 28 September 2010

Order forms received after this date **WILL NOT** arrive in time for the new school year.

Payment for uniforms can be made in installments or in full & is not required until booksales day.

Please note: As many people in the community would be aware, conversations were had regarding uniform changes. We wish to advise the school community that for the 2011 School year, the St Marys District High School Uniform will remain exactly the same.

Brian Shephard

*Please complete individual order form for each child in your family. Spares available from the display outside the office the office or the school website: <http://www.schools.education.tas.gov.au/stmarys/>

STUDENT NAME _____ **GRADE (in 2011)** _____

RUGBY JUMPERS

SIZE Please Circle	C4 \$50	C6 \$50	C8 \$58.00	C10 \$50	C12 \$50	C14 \$50	XS \$58	S \$58	M \$58	L \$58	XL \$58	2XL \$58
Chest	60	64	68	72	76	80	85	90	95	100	105	110
Waist	56	58	60	62	64	66	70	75	80	85	90	95
Hip	62	66	72	78	84	90	95	100	105	110	115	120
Height	110	120	130	140	150	158	165	170	175	178	180	180
QUANTITY												

POLO SHIRTS

** NOTE: Polo shirts are very generously sized

SIZE Please Circle	4 \$18.15	6 \$18.15	8 \$18.15	10 \$18.15	12 \$18.15	14 \$18.15	S \$20.35	M \$20.35	L \$20.35	XL \$20.35
QUANTITY (BLACK)										
QUANTITY (WHITE)										

SUMMER DRESSES

SIZE Please Circle	CHILD 4 \$43.30	CHILD 6 \$43.30	CHILD 8 \$43.30	CHILD 10 \$43.30	TEEN 12 \$43.30	TEEN 14 \$43.30	TEEN 16 \$43.30	ADULT 8 \$47.40	ADULT 10 \$47.40	ADULT 12 \$47.40	ADULT 14 \$47.40	ADULT 16 \$47.40
QUANTITY												

SKIRTS \$17.00



SK0084
Drop Waist Pleated Skirt

FABRIC: Polyester/Viscose/Spandex
WEIGHT: 265gsm
FEATURES: Drapped waistband
Front box pleat
SIZES: 4-18

GIRLS SIZING	4	6	8	10	12	14	16	18
TO FIT WAIST (CM)	56	58	60	62	64	66	68	80cm
TO FIT HEIGHT (CM)	108	120	130	140	150	160	170	
TO FIT CHEST (CM)	60	64	68	74	80	86	90	
QUANTITY								

For your Polar Fleece, track-pant, skort, shoe & alternate uniform needs, ask at:

**Main Street Clothing,
Main Street, St Marys
Ph: 6372 2211**

OFFICE USE ONLY

Date form recd @ office

POLO TOPS \$

RUGBY TOPS \$

Dress \$

Skirts \$

TOTAL \$

Grade 9 Camp

On Tuesday the 27th of July, the grade 9s set off for Hobart. On the way down we stopped at the Richmond Mazes. They were extremely confusing for us to get through. One strategy was to sit on the top of a way and direct others to the middle.

Once we arrived in Hobart, we stopped in Salamanca for a walk around. Mr Ennis pointed out a few interesting spots, however most of us were more interested in having a conversation with one of the boat owners. We then travelled to where we were staying and had some free time.

The next day we travelled to Port Arthur. The tour guide took us through some of the houses and prisons there. We all got the opportunity to place ourselves in the shoes of a convict when we went through a building that had a court room setup for the public.

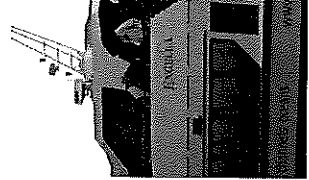
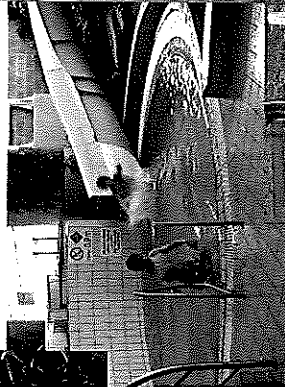
To save some cooking and cleaning we had takeaway for tea.

On Thursday, we drove into the centre of Hobart. We split up to either do an indoor rock climbing activity or laser shooting. We also did some shopping at Eastlands and swimming at the Aquatics Centre. That night we all went to the cinema to watch 'Marmaduke'.

Friday it was time to travel home. It was a much quieter trip than the one on the way down. Maybe we were worn out from all the knowledge we had gained on the trip ?? It certainly couldn't have been from talking all night!

A huge thankyou to Mr Ennis, Mrs Hindley, Miss Ellis and Mr Lynch for putting up with us and for organising an enjoyable camp.

Annalyse Brooks.



The year nines left St Marys to go on an amazing camp to Hobart on the 27th of July. The students went to see things like The Tessellated Pavement, Tasman's Arch and the Devils Kitchen as well as the historical site of Port Arthur including a beautiful cruise around the harbour, which took in all the beauty of the lovely area.

On the first day the students stopped in Richmond for lunch near the Richmond Bridge, the oldest bridge in Tasmania, before heading to the Richmond maze. The large majority of students found their way through the two joined mazes, found the centre of both and got out on time without any lost friends. From Richmond, the crew headed straight for Hobart with lollies in their pockets from the candy shop and Richmond maze cafe. Before they headed to the camp site a detour was taken to go to Salamanca, a nice spot on the harbour. After an over sized game of chess and a walk, everyone piled on to the bus to head for the camp site just outside of Hobart, 7 Mile Beach. When everyone had their gear sorted and cabins arranged people had dinner then mingled in each other's cabins before bed.

The second day came alive early in the morning with teachers and students up and around the camp with excitement over the day's activities. The bus left the camp to start a scenic drive to Port Arthur, the first stop however was at Eagle Hawk Neck. With a quick stop at the look out over Pirates Cove the bus headed down the hill to the Tessellated Pavement, an amazing natural formation in the rocks due to pressure and ever changing salty waves. After everyone was finished exploring they hopped back on the bus once more and headed to Tasman's Arch. A very large rock arch that towered over a deep chasm that most couldn't even see the bottom. From there they moved to the Devils Kitchen a sister rock formation to the Tasman's Arch. The Devils Kitchen was a large crack that travelled about 500 metres inland. Soon the bus was heading for Port Arthur once more. At Port Arthur everyone joined in the guided tour and went around the magical site with apprehension of the stories of old convicts that once were imprisoned in the buildings they now freely walked around. The students now had time to walk around freely. Soon the harbour cruise arrived and every one walked aboard (except Mr Ennis who chose to simply watch). On the way back people chatted excitedly until Sorell, where we had dinner, and then drove back to camp.

The third day was a more tired one, with many students and all the teachers yawning constantly. Everyone got up and prepared to head off to the city centre for a bit of shopping at Eastlands. Students had been given a choice of either rock climbing or laser tag, the numbers in each were quite even and everyone from both activities enjoyed them-selves and told others from the opposite group all about their experiences on the way to the Aquatics centre for a nice swim. Again everyone enjoyed them selves very much; especially so when the diving blocks were opened and the students could watch their friends plummet to the water about 5 metres below. Soon everyone was dressed and back on the bus heading back to Eastlands for a bit more shopping before going to the movies to watch Marmaduke; a good family movie about an inquisitive but sly Great Dane, not-surprisingly named Marmaduke.

On the 4th and final day the tired students and teachers packed their things and cleaned their cabins before jumping on the bus for another bus ride home. When the Bicheno people were dropped off the teachers shouted everyone hot chips before heading back to school. All the students would like to extend a special thanks to all the staff who organised and attended the trip and to Arthur, the bus driver, who put up with all of us for the whole camp and to parents for letting everyone attend.

By Sherelle Bowron



ST MARYS COMMUNITY HEALTH CENTRE

WHAT'S ON AT THE CENTRE	
22nd Sept	<p>Day Centre- For details on the group please contact Hayley Gilbert</p> <p>Podiatry- Perry Daly Lightfoot Podiatry Service for appointments please phone 6331 9568</p> <p>GP North Mental Health Worker for appointments please see your GP for a referral.</p>
23rd Sept	<p>GP Podiatrist- Annabelle. For appointment please see your GP or Health Professional for a referral.</p> <p>Continence Nurse- Sue (Replacing Heather). For appointment please see your GP or Health Professional for a referral.</p> <p>Social Work- Helen Jennings. Please phone 6372 2111 for appointments- Meeting 11am in the Day Room</p> <p>Relationships Australia- Leanne. For appointments please phone 1300 364 277</p>
24th Sept	<p>Diabetes Educator (GP North) - Appointments available by referral from your GP</p> <p>Dietician (GP North) - Appointments available by referral from your GP</p> <p>Exercise Physiologist (GP North) - Appointments available by referral from your GP</p>
27th Sept	<p>Social Work- Helen Jennings. Please phone 6372 2111 for appointments</p>
28th Sept	<p>Social Work- Helen Jennings. Please phone 6372 2111 for appointments</p> <p>Child Health Session with Sue Gofton every Tuesday- Appointments only. Please phone 0428 136 381</p>
29th Sept	<p>Day Centre- For details on the group please contact Hayley Gilbert 6372 2111</p> <p>Social Work- Helen Jennings. Please phone 6372 2111 for appointments- Meeting 11am in the Day Room</p> <p>GP North Mental Health Worker for appointments please see your GP for a referral.</p>
30th Sept	<p>Social Work- Helen Jennings. Please phone 6372 2111 for appointments- Meeting 11am in the Day Room</p>
4th Oct	<p>Social Work- Helen Jennings. Please phone 6372 2111 for appointments</p> <p>Hospital Auxiliary Meeting 2:00pm in the Day Room.</p>
5th Oct	<p>Social Work- Helen Jennings. Please phone 6372 2111 for appointments</p> <p>Child Health Session with Sue Gofton every Tuesday- Appointments only. Please phone 0428 136 381</p> <p>Tom Bain, Rae & Partners Lawyers. At the Community Health Centre Tuesday fortnights. For appointments please phone 6337 5555</p>
6th Oct	<p>GP North Mental Health Worker for appointments please see your GP for a referral.</p>

DOCTORS ROSTER

13th- 8th Oct Dr John-Paul Darby

St Marys Community Health Centre

GP Surgery Hours:

Monday-Friday 8:50am-12:30pm
12:30pm-1:30pm LUNCH
1:30pm-4:30pm

PATHOLOGY SERVICE

No Pathology Service between
12:00-1:30pm or before 8:30am daily.

If you require Pathology **before 8:30am** an appointment **must** be made with the Nurses Station **the day/night before.**

INR TESTS

A doctor's appointment is required if you are having an INR test. Please **let reception staff know when making your appointment that you are having an INR test.** This is a 5 minute doctor consult.

AFTER HOURS SERVICE CONTACT NUMBERS

PLEASE PHONE GP ASSIST ON 1300 780 011

AMBULANCE 1800 008 008 or

EMERGENCY 000

COMMUNITY HEALTH CENTRE 6372 2111

PLEASE RING BEFORE PRESENTING AFTER HOURS

SCRIPTS AND DOCTORS APPOINTMENTS

Please ensure doctors appointments are booked **prior** to your medication/s running out or **in advance** if you are attending this practice regularly.

Scripts **can not be requested by patients over the phone** and are unable to be done over the weekends, ensure you have enough medications in advance. **PLEASE BE PATIENT** waiting periods **can apply.**

IMPORTANT INFORMATION TO PATIENTS

If you are unable to get a doctor's appointment at the time of ringing and you feel you need more urgent medical attention please inform the reception staff who will put you through to the Nurse on duty. Daily Doctor appointments are not always available but if the need arises we can prioritise.

If in doubt- Call an Ambulance 000

AA in ST MARYS



If you are trying to control your drinking or trying to stop and can't- AA CAN HELP!

AA is running a day time support group in St Marys. If you are interested in attending or would like some more information about the group or the AA organisation then please phone:

Helen Jennings on 0407 505 901



East Coast District

*Transporting the Frail Aged and Younger People
with Disabilities & Carers in our Community*

Need Transport ?

Community Transport Services Tasmania Inc.
provides transport for a variety of
purposes including a wheelchair accessible
vehicle.

Servicing St Marys, St Helens, Bicheno, Swansea,
Ross, Campbell Town and surrounding areas.

Contact David on

6372 2137

Office : 2 Story Street
St Marys

Office Hours : Monday to Friday,
9am to 1pm

StMarys & district emergency & business contacts

CRIMESTOPPERS 1 800 333 000
 POLICE 000
 NON URGENT 131 444
 POLICE ST MARYS 6372 1010

AMBULANCE 000
 COMMUNITY HEALTH CENTRE 6372 2111
 DOCTOR 6372 2111
 BEN LOMOND WATER AND SEWERAGE 13 6992

FIRE 000
 SES 132 500
 (FLOOD & STORM ONLY)
 AURORA 13 20 04 EMG.

ACCOMMODATION

ADDLESTONE HOUSE B&B 6372 2783
 19 GRAY RD ST MARYS WWW.ADDLESTONEHOUSE.COM.AU
 FISH-TALES ON THE BAY (BH) 0439 265 363
 (PET FRIENDLY) (AH) 6372 2128
 MARITON HOUSE B&B + HORSE RIDING
 1 IRISHTOWN ROAD ST MARYS 6372 2059
 RAINBOW RETREAT (LOT 1 OFF GILLIES ROAD)
 (info@rainbowretreat.com.au) 6372 2168
 SEAVIEW FARM 6372 2341
 ST MARYS HISTORIC HOTEL 6372 2181
 (48 MAIN ST ST MARYS)

ARTS & CRAFTS

BLUEBERRY COTTAGE (OPEN GARDEN & CRAFTS)
 (ELEPHANT PASS) 6372 2755
 dave@blueberrycottage.com.au
 GONE RUSTIC STUDIO & GALLERY 6372 2724
 (37 MAIN ST ST MARYS)

GRASSY BOTTOM REGIONAL ARTS
 (CONTACT ANY MEMBER)

ART SUPPLIES

BIG SHED STUDIOS 0428 725 228
 (24837 TASMAN HIGHWAY ST HELENS)
 WHATEVER ART 6372 2287
 (LOT 1 GARDINERS CREEK ROAD)

AUSTRALIA POST

ST MARYS POST OFFICE 6372 2124
 (MAIN ST ST MARYS)

BAKERY

ST MARYS BAKERY 6372 2131
 (MAIN ST ST MARYS)

BANKS

COMMONWEALTH BANK 6372 2268
 (MAIN ST ST MARYS)

BERRY FARM

BLUEBERRIES SEA VIEW FARM 6372 2341

BOARDING KENNELS

THE GUMS KENNELS AND CATTERY
 (IRISHTOWN ROAD ST MARYS) 6372 2512
 UPPER SCAMANDER KENNELS AND
 CATTERY (905 UPPER SCAMANDER ROAD) 6372 5157
 WAGABOUTS (0429 170 077) 6376 2131

BREAK O'DAY COUNCIL

ST HELENS 6376 7900

BREAK O'DAY BUSINESS

ENTERPRISE CENTRE
 BEC SHOP 1/34 QUAIL ST ST HELENS
 (ADMIN@SMALLBUSINESS.ORG.AU) 6376 2044

BUS SERVICES

CALOWS BUS SERVICE (ST MARYS) 6372 2476
 (ST HELENS) 6376 2161

BUTCHER

INSTORE SUPERMARKET 6372 2274

CABLE LOCATIONS

TELSTRA COPPER NETWORK & UNDER-
 GROUND POWER CABLES ETC.
 MICHAEL SMITH 0408 059 521
 CARERS FOR WILDLIFE TAS INC.
 6372 2973 / 0417 017 105

CARTAGE CONTRACTORS

C & D EXCAVATIONS 6372 2033
 M HENDLEY 6372 2145
 TROTTERS CONTRACTING 6372 2107 6372 2742
 (EXCAVATION, DRAINAGE, & GENERAL CARTAGE)

CHILD CARE

ST MARYS CHILD CARE CENTRE 6372 2187

CHURCHES

ANGLICAN CHURCH 6376 1144
 CATHOLIC CHURCH 6372 2252
 UNITING CHURCH 6376 2405
 SALVATION ARMY 6372 2099

CLOTHING

MAIN STREET CLOTHING 6372 2211
 STRAWBERRY JELLY (MAIN ST) 6372 2684

COMMUNICATIONS

DAVID MORRIS 0402 969 393 6372 2743
 (david@delafiontera.com.au)
 (INSTALLATION & SERVICE TECHNICIAN)

CONFECTIONARY

MT ELEPHANTY FUDGE (7 STORY ST ST MARYS)
 (PROPRIETOR LIZ DEAN) 6372 2034

COMMUNITY CAR 0428 308 622

DRAFTSMAN

BUILDING DESIGN STUDIO 6372 2000
 (56a MAIN ST ST MARYS)

ELECTRICIANS

ST HELENS ELECTRICAL 6372 5522
 0407 615 072

ELECTRICAL & COMPUTER

GAZZMAN'S BETTA ELECTRICAL (ST HELENS)
 INCL. FURNITURE, BEDS, MANCHESTER FLOOR
 COVERINGS. HOME WARES Fax: 6376 2159
 (gazzmans@bettastores.com.au) 6376 2555

ELECTRICAL REPAIRS

RANSLEYS HOME APPLIANCES 6372 5307
 (SCAMANDER) 0428 761 811
 RICK ENGINEERING (MAIN ST ST MARYS) 6372 2460

FUNERAL DIRECTORS

HARRIS FUNERALS (ST HELENS) 6376 1153

GARAGES

CALTEX ST MARYS (MAIN ST ST MARYS) 6372 2335

GARDEN CENTRE

MANNA FARM 63722707
 (45 MAIN ST ST MARYS OPEN THUR/SUN 10 - 4pm)

GIFTS

AVAILABLE IN MANY BUSINESSES

GLASS REPLACEMENT

EAST COAST GLASS 6372 5361

GOLF CLUB

ST MARYS SPORTS CENTRE INC 6372 2177

INSURANCE BROKERS

MCKILLOP INSURANCE (LYN) 0400 984595

JUSTICES OF THE PEACE

K FAULKNER 6372 2196
 H VELDUMS 6372 2124

HAIR DRESSER

DESIGNER HAIR (MAIN ST ST MARYS) 6372 2108

HEALTH FOODS

PURPLE POSSUM WHOLE FOODS 6372 2655
 (STORY ST ST MARYS)

HEALTHY COMMUNITY PROJECT

(5 PORTLAND COURT ST HELENS) 6376 5242

HORTICULTURIST

PETER DANE (QUALIFIED HORTICULTURIST) 6372 2686

HOTEL

ST MARYS HOTEL (MAIN ST ST MARYS) 6372 2181

JAM (JESUS & ME) M NORTON

6372 2099

LIBRARY

ST MARYS LIBRARY 6372 2114
 (MAIN ST ST MARYS)

LINE DANCING

VALLEY COASTERS 63 72 2266
 (SUE FISHER)

LYMPHOEDEMA CENTRE

ST MARYS LYMPHOEDEMA CENTRE 6272 2900
 (LOCATED AT ST MARYS COMMUNITY HEALTH CENTRE)

MARRIAGE CELEBRANTS

PETER POWER (peterpowercelebrant@gmail.com)
 0417 017 105
 TERESE TANNER 0400 512 845 6372 5745

MEALS ON WHEELS

0488 384 344

MECHANICS

MICHAEL AULICH (MECHANICAL & WELDING REPAIRS
 & GENERAL STEEL & ALUMINIUM FABRICATION,
 209 IRISHTOWN ROAD MOB: 0417 507 239 6372 2991
 GRANT FAULKNER (CALTEX ST MARYS) 6372 2335

MUSEUM

CRANKS & TINKERERS (IAN) 0417 648845
 (MAIN ST ST MARYS)

NEWSAGENCY

ST MARYS NEWSAGENCY 6372 2143
 (STORY ST ST MARYS)

NEET CENTRE (ST MARYS) 6372 2175

ONLINE ACCESS CENTRE

ST MARYS ONLINE CENTRE 6372 2005

OP-SHOP (MAIN ST ST MARYS) 6372 2733

ORGANIC VEGETABLES

JACK FOREMAN (7 STORY ST ST MARYS) 6372 2034

PACING CLUB

ERIC BEAN SEC. 6372 2136

PAINTERS

MLN ENTERPRISE PAINTING 0439 722 718

RAY ROSSKELLY 6372 2218

PHARMACY

ST MARYS PHARMACY 6372 2844
 (MAIN ST ST MARYS)

PLUMBERS

P J & H K CHILD 6372 5378

R G & R I HARWOOD 6372 2445

PROOF READER

LEISSA DANE 6372 2686

PROPERTY CONSULTANT

LYN DAWES PROPERTY CONSULTANT
 (TOWNS SHEARING) 0427 560 565

RESTAURANTS/CAFES

COACH HOUSE RESTAURANT 6372 2529

ESCAPE WILDERNESS CAFE 6372 2444

HAPPY BELLY DELI 0404 725 430

MT ELEPHANT PANCAKE BARN 6372 2263

PURPLE POSSUM WHOLE FOODS 6372 2655

SEASALT 1300 646 001

SECONDHAND DEALERS &

COLLECTABLES

CORNWALL COLLECTABLES 6372 2365
 (CNR LENNOX & ALEXANDER ST CORNWALL)

SECONDHAND ROSE (AH) 6372 2267

SEPTIC TANK CLEANERS

SPLASH ST MARYS 0488 777 713

SCHOOLS

ST MARYS DISTRICT HIGH SCHOOL 6372 3900
 (GRAY ROAD ST MARYS)

SUPERMARKET

ST MARYS SUPER VALUE 6372 2240

(MAIN ST ST MARYS) BUTCHERY 6372 2274

SURFING SUPPLIES

SCAMANDER BEACH SURF SHOP 6372 5529
 (6 LAGOON ESPLANADE SCAMANDER)

BAY SURF SHOP (2 PENDRIGH PLACE ST HELENS) 6376 1755

TELEPHONE, DATA & TV

EAST COAST PHONE & COMMUNICATIONS
 (JOHN HERON) (DIGITAL TV & SET TOP BOXES)
 0409 959 121 6372 2402

DELAFRONTERA (DAVE MORRIS) INSTALLATION &
 SERVICE TECHNICIAN MOB: 0402 969 393 Ph: 6372 2743

SURVEYORS

EAST COAST SURVEYING (ST HELENS) 6376 1972

VALLEY VOICE PUBLICATIONS

ACCOUNTS 6372 2328

ADVERTISING 6372 2155

(judith.spilsbury@telair.com.au)

WATER CARRIERS

SPLASH ST MARYS 0488 777 713

WOODWORK GUILD

OLD RAILWAY GOODS SHED (ST MARYS) 6372 2094

WIDE SPAN SHEDS 6372 2724

YOGA

ST MARYS YOGA ROOM 6372 2034

(7STORY ST ST MARYS)TEACHER JACK FOREMAN

YOUTH HOSTEL

SEAVIEW FARM (GERMANTOWN) 6372 2341

St Marys Sports Centre Inc. news. Kackhander

First to the Men's Club Champions just completed and congratulations to Kodie Donald in winning his third consecutive championship with 163. Well done Kodie. Keep it up and you'll be catching Chris Davern, Don Holmes, Steven Dawson, and Dale Ridger's multiple championships in a few years.

Agrade nett was won by Mark Carrick. John McDonald won both B Grade and the Senior Championship and it's great to report that Dennis 'Deisel' Coleman won the C Grade and handicap.

Deisel is one of our newer players and by all accounts shot a great second round especially.

Well done to all who played. Excellent effort all round.

Club captain Barry Harrison wants to let all know that this coming Saturday, (AFL Grand Final) the club will again be conducting the popular Grand Final Breakfast and competition. It commences at 8am with a sumptuous cooked brekky followed by a three person ambrose over 9 holes. All inclusive cost is \$10 before you watch Collingwood and St Kilda beat the tar out of each other for the premiership. Should be a good day again.

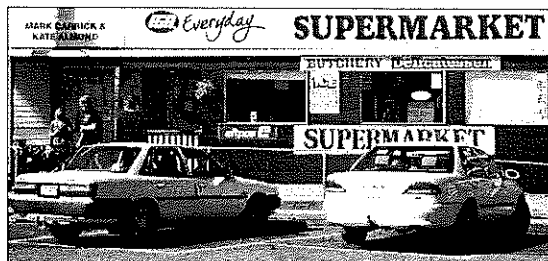
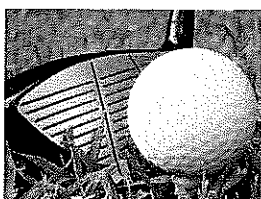
To bowls, and with the new season less than a month away the green is getting close to being ready. Due to weather issues some of the necessary work will need to be done later so please be patient and understanding if the odd rink or two at times is closed down for work. It shouldn't be too much of an issue.

Not quite the same bowls but thanks to Jim T, Trev and Roger and others you will notice that the ratty old carpet has been removed. This provides the chance for minimal maintenance in the future as well as a proper surface to use indoor bowls as an extra way to keep the club ticking over. Thanks fellas.

Finally on bowls, the Committee reminds all that practice starts on Thursday Sept. 23rd, followed by a general bowls meeting after, if you can make it. Opening Day is set for October 3rd.

A great new addition to the club is the fantastic new awnings for the replaced windows. Very good to use, aesthetically terrific, and practical. A big thanks to Council with help in this regard. Very much appreciated.

Anyway, until next time, good hitting and rolling.



38 Main Street St Marys
Phone/Fax 6372 2240 - Butcher Ph: 6372 2274
Mon - Fri 8am - 6pm
Sat 8am 12 noon

This week's specials.

From the butchery

Rump steak	\$11.99kg
Beef mince	\$ 9.99kg
IGA chicken drumsticks	\$ 5.49kg
BBQ meat packs	\$ 8.99kg
Silverside	\$ 6.99kg

Instore

CSR white/raw sugar 1kg	\$1.79
Berri long life juice 2.4lt	\$3.49
Arnotts sweet plain biscuits 250g	\$1.79
Sanitarium weetbix 750g	\$3.79
1 x lt conserve jam 600g	\$3.49

From the freezer

McCains peas 500g	\$1.99
McCains baby beans 500g	\$2.99
Inghans chicken duets 350g	\$5.75
Sargents pies 4pk	\$5.99
Sara Lee apple crumble 475/600g	\$5.75

Next week's specials.

From the butchery

BBQ blade steak/blade roast	\$ 7.99kg
Short loin chops	\$14.99kg
Lethborgs pickled pork	\$11.99kg
BBQ meat packs	\$ 8.99kg

Instore

Kit-e-Kat canned cat food 410g	.99c
Golden Circle sliced beetroot 450g	\$1.49
Zafarelli pasta 500g	\$1.39
Cussons pure soap 4pk	\$2.19
Devondale long life milk 1lt	.99c

All only \$1.99

Allens jelly confectionary range 190/200g
Smiths potato chips 175g
Maggi tender roast chicken flavour mix 34g
Kleenex Extra care facial tissues 95s
Cussons pure liquid hand wash 250ml
Palmolive dishwashing liquid 500ml
Sirena canned tuna 95g
Schweppes/Pepsi soft drink 2lt

* Organic meat will be available from the butchery Tuesday September 28th. Please call in and talk to Aaron & Scott.