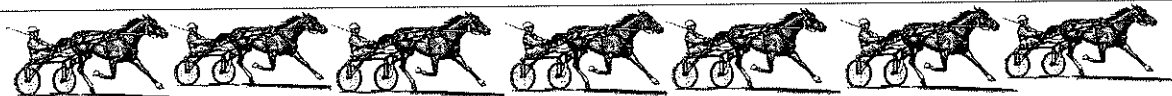


The Valley & East Coast Voice

Est. 1968

Volume 44 No. 16. Thursday December 1, 2011.

50 cents



St Marys Pacing Club Inc.

As happens this time of the year, we are beginning to prepare for our Annual race meeting, usually held on New Year's Day.

Please note that this year the meeting will be held on December 31st, or as we know it, New Year's Eve, and will be a day meeting and not a twilight one. This change is not by choice.

Last year we conducted ten races which was a record number for the club. This year we have formed seven raced and hope to have enough entrees for one or two more.

We are also negotiating with the junior trotting people to conduct a couple of pony races. These are very entertaining. We will also have the sheepdog in a yard, rounding up the ducks among his tricks. It was a great drawcard last year.

There will be a good raffle before and on the day, with lots of great prizes. Also a lucky programme prize of \$100, and a losing tote ticket prize of \$100.

The children will also love the face painting and the jumping castle.

A terrific afternoon tea is available, prepared by our wonderful ladies – the best around.

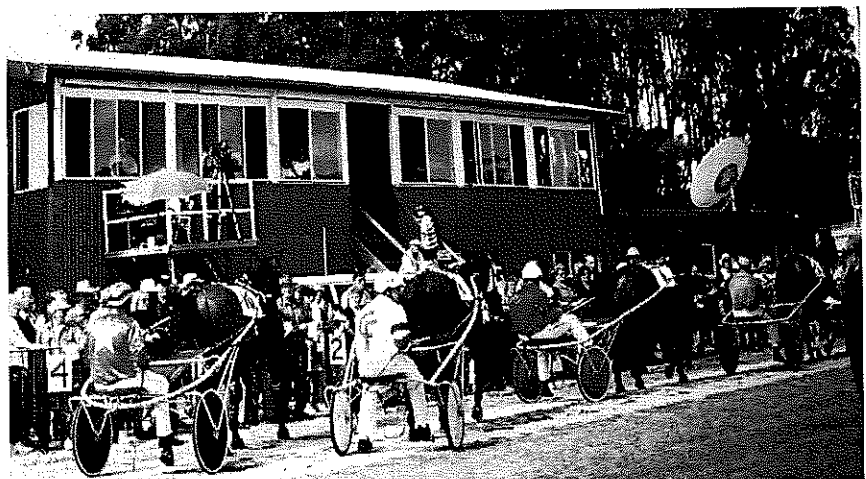
Soft drinks, sweets, hamburgers, saveloys and sausages are also on the menu. Also as usual, a well serviced and conducted liquor booth with lots of varied drinks available.

We have the Tote in operation, plus five bookmakers with betting on all local and mainland races.

The public address system has been improved, for people at the top end of the straight, who previously could not hear the broadcasts.

If any persons wish to help in any way on the day, they will be very welcome, as a lot of us are past our use-by date!

Hoping for a good roll up.
Eric Bean, Secretary.



Please note: Deadline for articles in the next Valley Voice is 5pm Tuesday December 13, 2011

EMAIL ADDRESS: judith.spilsbury@telair.com.au

Community news

St Marys Hospital Auxiliary meets the first Monday of every month at 2pm at the **St Marys Community Health Centre**.

The Break O'Day Woodcraft Guild Inc. meets for meetings the last Saturday of the month at 2pm at the goods shed behind the St Marys Railway Station.

The **Tasmanian Lymphoedema Centre Inc.**, holds meetings every 3rd Monday of the month at 10 am at the St Marys Community Health Centre, Day Care room.

St Marys Ladies Midweek Tennis 9.30am each wed. Need new players - of any standard-beginners welcome-childminding included - lovely safe place to bring toddlers while you play. **Ring Annette- 6372 2224.**

St Marys Playgroup meets each Monday 10.30am - 12 noon at the **Falmouth Community Centre**, during school terms. \$2 a session per child or \$3 per family. Please bring a piece of fruit to share and your child's personal drink bottle. Bikes plus helmets welcome. **Phone or text: Danyelle: 0427 073 100.**

WOMBAT WALK LANDSCAPING GROUP meet every Wednesday 9am to 12 Noon (weather permitting) at St Marys Musical Playground area to plant and maintain the rivulet park and flower bank - anyone interested in joining us - please come along and meet our group. **Contact -Robina 6372 2022.**

St Patricks Head & Esk Valley Historical Society Inc has a meeting one month and a field trip the next. We invite everyone to come along on the third Sunday of the month and enjoy an informative time with lots of fun. For more information **Phone: Barry Aulich (637225752) Darlene Wright (63722416) or Jim Haas (63722127)**

The Scamander and Beaumaris Community Development Association meets at 7 pm at the Scamander Sports Complex every third Wednesday of the month. New members are most welcome.

The **Falmouth Community** centre would like to advise members and the community that the new contact for bookings of club facilities is Rachel Woods. Rachel can be contacted on: **03 6372 5118.**

Suncoast Singers meet every Friday at 10am in the Catholic Hall - Cecilia Street St Helens. New singers always welcome... If you can yawn - you can sing. **Phone Mary-Anne Wadsworth 6376 2969.**

Meeting dates for **Friends of St. Helens History Room & Museum for 2011.**

Contact the Centre at **6376 1744.**

Break O'Day Regional Arts - General meetings held on the first Tuesday of each month at 4.30 p.m. at the e.ScApe Cafe. All welcome. Inquiries to **Rod 6372 2444.**

Cornwall Community Development Group Inc. meets @ 7pm on the first Tuesday of each month in the Cornwall Hall. All interested persons are invited to attend. **Wendy Dawson (secretary) 6372 2722.**

St Helens Alcoholics Anonymous (AA) Wednesday 8pm Weekly. St Pauls Anglican Church Hall, St Helens. **Murdoch 6376 3335.**

St Helens Al-Anon Family Group (Al Anon) To help families and friends of alcoholics recover from the effects of the living with the problem drinking of someone close. Sunday 2pm weekly. St Pauls Anglican Church Hall St Helens
Anne or John 6376 4270 or Rose 6376 3335.

St Marys Alcoholics Anonymous (AA) Friday 8pm Weekly. Holy Trinity. Mick & Shir: **6372 2909.**

MANGANA MISSION MUSICIANS JAM NIGHTS
Monthly musicians jam nights will be held at Mangana Mission, 63 Elizabeth Street, Mangana on the 2nd Friday evening every month.

Last one for 2011 - Dec 9th.

Starting time will be 6.00 pm. BYO meat and drinks for a BBQ. All styles of music, instruments and vocalists are very welcome.

For more information call André or Kate on 6374 2212

The Break O' Day Stitchers meets each Friday in the Bungalow at Neighbourhood House in St Helens from 10 a.m. to 3 p.m. and participants are welcome to stay for as long or short a time as they may choose. The choice of projects to work on is also optional - either to bring your own work or join in and assist on a group project.

THANK YOU

On behalf of the Woodcraft Guild we would like to thank Tracey and John Macdonald for the kind donation of a silver birch tree which was lovingly grown from seed.

Many thanks again.

Wendy Brennan,
Secretary, Break O'Day Woodcraft Guild.

CONGRATULATIONS

It is with great happiness that Peter and Beverley Rubenach congratulate their daughter Esther and Denis Beveridge on their recent engagement. Peter and Beverley Rubenach.



24 days until Christmas

WANT TO GET FIT FOR SUMMER? WELL COME TO THE PIGEON LOFT ON MONDAYS AND THURSDAYS 5.45PM, AND SEE WHAT FRAN CAN DO FOR YOU.

Remedial Massage and Naturopathy
ring Sue Christiansen for an appointment.
0418 515 419

Just ask

Lorraine Gill

She'll tell you how to get

Inside my Skin

www.insidemyskin.com

Classifieds

For sale

Casio Classpad 330 calculator. Suitable for maths applied 3. excellent condition. \$150. **Ph: 6372 2552.**

WOMEN'S SHOES - 'Doc Martens', black leather zip boots, as new cost \$240, sell \$100. ono. **'Hinako'** sandals, leather strappy with zip at heels, purple, NEW, cost \$100, sell \$50. ono. **'Wallaby Tracks'** hand-made suede ballet slipper style, purple, NEW, cost \$95, sell \$50. ono. All fit size 7 1/2 - 8. **Ph 6372 2686** to see/try on.

2 Kayaks, (one with skirt) \$325 for both. **Alpinestars Tech 3 motorcross boots**, size US9, worn 4 times (\$340 new) \$140. **Kids 8 ball table complete**, good condition \$35. **KTM 125sx 2004**, good condition. \$2750. **Ph. 0437 227 123.**

2007 Yamaha WR 450 F, FMF Pipe, Bar Raisers, Ballards Disc Saver, GYTR Bash Plate, GYTR Rad Guards, Gripper Seat, Good Chain and Sprockets, New Fork Seals, Wheel Bearings, Front tyre 80% rear 60%. Full Road Reg. until June 2012. Heaps Of Spares. Only Selling To Update. Very Good Cond. \$6600. Neg. **Ph:0417 320 142.**

8 x Galv tent poles, some adjustable. \$40. **1 x gas light** with extension and gas bottle 2.5kl. \$20. **1 x 2 man tent**, with all pegs and poles. \$20. **1 x 2 burner gas stove**, with cast iron BBQ plate. \$20. **1 x near new Kambrook electric BBQ grill**. \$25. **1 x single metal camp bed with mattress**. \$15. **2 x sleeping bags**. \$10each. **2 x life jackets**. \$10 each. **Various animal skins**, goat, roo etc. Offers? **Ph: Pete: 6372 2398.**

Motorbikes: Atomic 125. 2 whole and 1 pieces (accident) Prob need mechanical attention. Not used for 4 years. As is \$1000 lot. **Ph: 6372 2835 - 0418 271 315.**

Air Hockey Table. approx 2m x 1m x1m high Good Condition Ideal family fun xmas present. \$120. **Ph:6372 2835 - 0418 271 315.**

wooden bunk bed. converts easily 2 single beds with 2 good innerspring mattresses. Good condition. \$400 lot. **Ph:6372 2835 0418 - 271 315.**

Pine wardrobe. 2 door 2 drawer bottom good wide hanging space \$40. **Matching single pine desk** 4 drawer \$40. **Old style wardrobe multi door/drawer** \$50. **Drinks cabinet**. \$30. **Ph:6372 2835 - 0418271315.**

Slate top 8 ball table. Offers over \$1000. For viewing **Ph: 0419 517 630 or 0419 890 859.**

Queen size mattress. Sleepmaker Chiro Classic Dream. RRP\$3399. 10 months old. Pristine condition. \$850. **Ph: 6372 2200 or 0407 833497.**

Giant Cross City road bike. 27 speed gears, hydraulic seat, new tyres and chain, excellent condition. \$420 .ono.

GMC 10 inch Sliding Compound Saw. good condition \$85. ono. **Sky Light**, dome type still in box. Cost \$340. - Sell \$150. **PH: 0417 385 787.**

12" girl's bike. \$40.ono. **12" boy's bike**. \$40.ono. **16" boys bike**. \$60.ono. All in good condition. **Ph: Mark & Louise Williams 6372 2158.**

For sale

Book cases- large \$80/ small \$20. **Wall unit**- large \$150. **Glass Cabinet** (old style) - \$50. **Dressing table** with large mirror- \$50. **Wardrobe**- \$30. **Dining suite** (orange chairs) - \$80. **Large TV Cabinet** (old style) - \$30. **TV/s x 2 small** (old style) - \$10 each. **Lounge and 2 recliners**- \$80. **Washing Machine**- \$80. **Dryer** (near new) \$150. **BBQ with Gas Bottle**- \$80. **Fridge**- \$150 o.n.o. **Computer**- Give away! **Oil Filled Heaters x 4**- \$5 each. **Ph: Joy 0439 101 230.**

2.5 seater sofa. As new. (brown) \$150. **Ph: 6372 2239.**

Valco Runabout 2-3 wheeled pram. Comes with storm cover, sun shade and brand new interior lining as a spare. Original lining in excellent condition. Red & black in colour. \$150. firm. **Black Fisher-Price baby bag**, insulated side pockets and internal change mat. Assorted blankets & box of newborn baby clothes in excellent condition, some new. Some unisex, mostly boys. \$50 the lot. **Firm. Ph: 0408 174 193.**

Mastiff pups. All black—can view parents. Ready early November. Wormed and vaccinated. \$500 each. **Ph: 0427 713 195.**

Kawasaki KX85, big wheel, 2001 model. New chain and sprockets and rear suspension. Good condition, goes well. \$2000. **Firm. Ph: 6372 2665.**

60 metres Lysart Sheerline galvanised guttering. New- \$10.70 per meter. Bargain at \$150 the lot. Good condition. **Ph: 0417 354 001.**

Kawasaki KX60 2000 model. Recent complete re-build. As new condition. Includes all gear—boots, helmet, armour etc. \$900. Great Christmas present. **Ph: 0458 722 455.**

Wanted to Buy

Men's 26" Mountain bike.
Ladies Mountain bike.
Ph 0437 227 123

Treadmill wanted to borrow or buy - please ring 6372 2724 or 0417 027 424

"Moo-Poo". Finely screened. Any quantity. See Norm. **Ph: 6372 2380.**

Frozen blueberries - \$11 kilo **Phone 6372 2341.**

Garden mulch. Large square bales of straw.
Free delivery in St Marys area.
Ph: Mark or Alana: 63722145.

Small square bales of garden mulch \$5.
Small bales of grass & clover hay. \$5. (undercover)
Garden mulch, in big round bales. (wheat straw, weed free) \$60 a bale, delivered free in St Marys area.
Ph: 0407 944 158.
Tractor slashing available. Ph: 0407 944 158.

Classifieds in the Valley Voice are free of charge. If your articles are not sold after the first entry, we will repeat the ad in the next issue. Please let us know if items are sold. Every effort will be made to have correct details and phone numbers. However if there is a mistake, it will be corrected in the following issue.

TASMANIA
Valleys of Adventure

AVOCA • ROYAL GEORGE • ROSSGARDEN • FINGAL • MARGANA • MOTHBURN • SUPPERUSH • CORNWELL • ST HELENS

GREATER ESK TOURISM

GET TOURISM ... meets the second Monday of each month unless otherwise notified.
WHERE: Fingal Valley Neighbourhood House
TIME: 7PM
ALL WELCOME.

Enquiries to the president on 63722783.

Bicheno Indoor Market

When: every last Sunday of the month until end November 2011.

Where: Bicheno War Memorial Hall
9am - 1pm

Hot Foods - come and enjoy breakfast, morning tea or lunch.

Variety of Stalls

More stall space available:



Sunday Market

Happening :

At the Old Tasmanian Hotel

On the third Sunday of the Month

Please ph 6374 2344 or mobile 0488 562 538

to book your table/trestle

Needed: fruit & veggie stall holders



Stallholders Market Inc.

Is a non profit organisation holding markets every Saturday from 8am in St Helens, at the Library car park. There is a variety of stalls and the fees charged to stall holders is donated to various charities.

For stall booking and other inquiries, please phone Marilyn on 6376 1858.



St Marys Market

Rain hail or shine the markets will be held on the 1st Saturday every month in the community hall. 9am start.

New stall holders welcome.

Phone Robina 03 6372 2022 or Sue 03 6372 2512

Articles for any edition may be left at the St Marys Pharmacy. This also includes items for sale and wanted. Please ensure that your details are included.

CALOWS BUS TIMETABLE
AVAILABLE AT NEWSAGENCY

BIG SHED STUDIOS

Big Shed Studios is officially on the market with www.surfcoastrealty.com.au

Simon, Belinda and myself would like to thank all of the people who have supported us over the years.

We are struggling to get numbers to life drawing and private guitar lessons and are therefore having a break for the time being.

We still have a fantastic space if there are any creative beings out there wishing to share their skills with others, or just need a space to get creative and make a mess.

Please continue to support John McColl and his fantastic sculpture class: Ph. (03) 6372 2413.

And Nathan Vincent with his fitness groups: 0417 904 394

Kind regards,
Natasha Lowe.

It is with regret that we must inform all past recipients of our annual Christmas cakes that we can no longer do so.

We realise that our health is deteriorating and our energy being depleted due to old age creeping up much too quickly.

In order to maintain the standard of care and attention we have provided for our son, Tim for the past 25 years, we must let some things go.

We wish all of you Joy, Peace, Love and Hope this Christmas.

Peter and Beverley Rubenach.

EXPRESSIONS OF INTEREST

We have been provided with a 14 hour per week Individual Support Package to help with the care of our son, Tim.

Our service provider is Optia. As part of our contract we are actively engaged in finding suitable support workers.

We want local people if possible.

If you have experience (or want to be trained) in Acquired Brain Injury/Disabilities care and want the challenge of caring for Tim, please contact us on 6372 2348 (between 8am - 8pm). We can talk with you and provide you with an Optia recruitment package.

Peter and Beverley Rubenach.

Tasmania Lymphoedema Centre Inc.

PLEASE NOTE:

That the Spring Raffle will now be drawn on the 19th December, 2011.

Vic Cato, Secretary.

MOBILE HAIRDRESSER AVAILABLE

ALL COLOUR SERVICES

RECEIVE

FREE TRIM AND BLOWDRY.

PH: RACHAEL 0407 474 504

Our Lady Councillors

With women having a prominent part in all forms of Government these days and with the first female Mayor, Sarah Schmerl, elected in the Break O'Day Municipality recently, it is interesting to look back and see when the first woman was elected to the old Fingal Council in 1969.

In the following Editorial featured in the March 1969 edition of the Valley Voice, the then Editor, Geoff Dean makes some interesting comments:

"On Saturday March 22nd (1969) ratepayers in the Fingal Municipality will go to the polls to elect new representatives for four wards: Fingal, St Pauls, Tower Hill and St Marys.

Probably the most interesting of these ward elections will be the St Marys ward where there are three candidates. Also for the first time in the Fingal Municipality elections, one candidate is a woman.

Already this precedent has provoked a considerable amount of speculation from ratepayers. How will a woman perform in Council duties? Will she be out of her depth with Council problems? How will she be able to make decisions which might involve a great amount of practical and engineering know how? These problems it is assumed may need the aptitude of the male mind.

But just how true is this assumption? This can be answered by posing two questions. How many qualified engineers are there on Council already? And does it really matter anyway?

This paper presumes that councillors only directs employees to carry out various jobs. It is, or should be, the employees who are the experts in technical ability, not the councillors themselves.

But even if this wasn't so there still seems to be many facets of Council business that in fact a woman may be vastly more suitable for than a man. For instance: health and social problems. Perhaps we could also point out the number of women already successfully employed in Tasmanian Local Government.

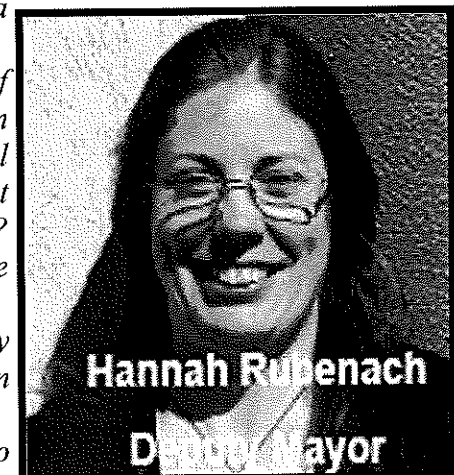
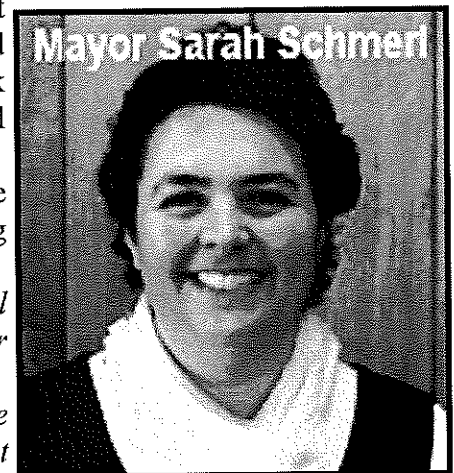
On the 22nd (of March 1969) it will be the ratepayers' decision to vote one for whichever candidate they feel will serve them best. They will make their choice for many reasons, but for goodness' sake let us not put anyone in for the wrong or fallacious reasons."

As we can judge from Geoff's editorial, there were some doubts amongst ratepayers back in 1969 as to whether a woman would have the knowhow to handle the hard decisions a councillor sometimes has to make.

The candidate in question back in 1969 was Fingal's Ruth Saunders, who went on to win a seat on the Fingal Council and in no time proved herself a worthy councillor in what was, up until that time, a male dominated role. Ruth no doubt paved the way for lady councillors in Break O'Day and proved, like those who have come after her, to be more than capable of handling whatever is thrown at them.

In 2011 the popularity of women by the ratepayers in Break O'Day was evident, with long serving Councillor Margaret Osborne and Sarah Schmerl topping the primary votes. To add to this, Hannah Rubenach was able to overtake three male candidates to win the position of Deputy Mayor.

It is also interesting to note that the Mayor and her deputy are the youngest members of the current Council. Is this a sign that the Break O'Day electorate not only wants more women at the helm of Local Government, but young people as well?



The Editor, Valley Voice,

In regard to Letters to the Editor by Cllr Johns and Wendy Brennan regarding Jeanette Peryman 'a series of quotes'.

I would like to draw your attention to another local and famous quote by Paul Keating to John Howard, delivered in similar circumstances. Quote- "You remind me of a 24 carat Pissant". This quote can be accessed in Hansard.

Philip Peryman.

Dear readers,

In reply to articles written by Wendy Brennan and Reon Johns (V.V. Nov 17, 2011) I would like to make it very clear that I don't give a Tinker's cuss about some people's attitudes towards me. They can think what they like.

Now to quote from Rita Summer's article (V.V. Oct 20) "Yes free speech is a wonderful thing. We won't get arrested for expressing our opinions".

White Australian women were given the right to vote (Suffrage) in 1902, and a right to free speech (without being arrested).

In future, both Rita and myself will continue to air our views in "Valley Voice", without being gagged by others.

I am sure we both appreciate the opportunity that the editor gives us for healthy community comment, even though Rita and I may at times have opposing views. Please note that I intend supporting and voting for my preferred candidates in any election (including local Gov't) without being bullied. Jeanette Peryman.

To the Valley Voice,

I have been approached by concerned members of the community regarding the untidy state of the now demolished dwelling next to the St Marys Hall.

As this is private property it would be considered an act of trespass if any person enters this site without lawful process. Although, the grass is unruly and lengthy, because it is still green the council abatement officer cannot issue an abatement order. However, if any concerned resident would like to contact the owner and seek permission to tidy up the block. I can assist with the owners contact details.

Cllr Reon Johns

TO THE EDITOR. The Valley & East Coast Voice,

I am sending this email just to clear a misconception that has occurred in the writing of your local paper. I am a member of the Van Demons Motorhome Chapter. We are all members of the Campervan and Motorhome Club of Australia (C.M.C.A) and recently had a weekend meeting at St. Marys.

We had a terrific time and wish to thank All members of the St. Marys Sports and Social Club. We have these meetings one weekend of every month in different towns in Tasmania. I wish to make clear to your Town that we are nothing to do with WINNEBAGO as such, even though some members may own one.

Anyone that walked around the camping ground while we were there would see we have all sorts and sizes of vehicles. Hope this note will clear up your mistake.

Thank You.

Yours faithfully,

Sue Mackenzie. T22609

Committee Member.

Van Demons Motorhome Chapter.

29 November 2011



Operating Hours – St Marys CBA

Dear Residents,

In light of the recent decision of the CBA to reduce opening hours as from January 2012, it has become increasingly apparent that a reduction of service will have a huge effect on the community.

I have written the below letter to the bank and would ask you to express your concerns to the bank also (via letter to Mr Mulcahy). I am meeting with the executives overseeing this process on the 8th December to seek assurances on the future of the bank here and to put the case forward for retaining the status quo.

Your sincerely,

Mayor Sarah Schmerl

Stephen Mulcahy
Relationship Executive
Commonwealth Bank
Level 3, 81 Elizabeth Street
HOBART TAS 7000

Dear Stephen,

I am writing to you on behalf of concerned members of the community, particularly in St Marys regarding the new operating hours for the St Marys Branch of the Commonwealth Bank. Council holds its accounts with the Commonwealth Bank and has done for a number of years. Some of the concerns which have been raised with me are as follows:

- Difficult for businesses who only have one (1) or two (2) employees to be able to get to the bank in the middle of the day.
- The restricted hours make it impractical for the residents living in outer areas, eg Mathinna, Mangana, Fingal, Falmouth, Four Mile Creek and other surrounding townships.
- Smaller rural communities rely on the face to face interaction with staff for personal service and a feeling of security for their banking requirements, especially when a lot of these customers are elderly.

Concerns that this may be an attempt to close the branch all together which would be detrimental to St Marys and the surrounding towns as a lot of residents either do not have transport to enable them to travel to the closest bank which would be St Helens or their access to transport may be limited.

It is also disappointing to hear the intention of the bank to reduce staff and have them compete for one (1) position in St Helens, if this is true?

I therefore request that the CBA further consider the change in operating hours for this small community for the services that the bank provides.

A reply to this correspondence at your earliest convenience would be very much appreciated. Alternatively, if you would like to discuss this matter further please do not hesitate to contact me on 0428 736 578.

Yours faithfully,

Sarah Schmerl

Mayor

The Say Cagerattler.

I was really disappointed to learn that within a few weeks our local bank is going to go through a fairly dramatic change. At the end of January 2012 there will no longer be full banking hours.

Remember how much we disliked the idea of the bank closing for an hour at lunchtime? Well now the bank will open at 10.30am and close for the day at 2.30pm, a total of four hours transaction time, roughly half of what it is now.

Whilst this is not essentially a problem for some it will be a problem for others because for an ageing community, reported to be the second oldest aged community in the state, more rely on the expert assistance of the staff at our bank branch to do normal bank functions I'd suggest. For people not yet fully conversant with tele-banking or online services, the need to go through necessary banking services may be compromised somewhat, given that they may be out of range during normal working hours, or some of our older community members need transport from friends or neighbours who work normal hours, to bring them in to do their banking.

Some also require direct contact to talk through bank services with a representative in regard to loans, mortgages, insurance, upgrades etc. At least for some on Fridays until now a 5pm closing time allowed an opportunity for this to occur. Now people in that position are likely to have to make arrangements with employers to catch the short bank hours.

That's the private side of things but what about our business folk? The branch will not be available until 10.30am instead of the usual 9am, so too bad if essential making of change is required, exacerbated by 2.30pm closing the day before. If it was to occur, imagine how crabby you'd be trying to change a whole bunch of larger notes as it invariably happens regularly, especially during holiday periods. However a more serious issue is that depositing cash will now be done for many prior to closing time so takings after 2.30pm will perhaps have to be held considerably longer. It would be interesting to get some feedback from local businesses if these issues might be a problem. I'll stand corrected if this isn't really a big problem.

With all that said, I am a long time bank customer as many others are and there are two questions we need to ask. Number one is that as a PR matter, can the bank issue to customers of the several branches (eight I believe) a decent letter explaining the reasons why this decision has been made and number two, can they guarantee that this is not the first step in eliminating our branch altogether. If they can justify the need to reduce hours, that's one thing that we will have to accept but if we were to ever lose the branch completely, meaning that the nearest bank is at least more half an hour away, then that would be **TOTALLY UNACCEPTABLE**, wouldn't it? We need to get some assurances on this very soon. We need to lobby the Commonwealth Bank on this.

On a wider scale, it's great to live in great little communities like ours in most respects, but once again issues like these also show a big disadvantage. Unfortunately when it comes to low populated areas, governments, corporations and the like, can downsize, "rationalize services" or close down services because there are not as many to protest. We Fingal Valleyers know only too well about this don't we? Just sit back and think about how much we've already lost over the years with not much in return. That's a sad and unavoidable fact.

What do you think?

Letters to the Editor

Vol. 44 No 16 December 1, 2011

Editor, Valley Voice,

In a reply to my wife (Mine apparently is still in the mail) from the Break O'Day General Manager, "A public meeting will be held early next year on the subject of the St Marys Main Street works.

Prior to the meeting an opportunity will be provided for formal comment on the proposed works".

Did everyone enjoy their small taste of the parking future, that the works carried out by Ben Lomond Water provided last week?

If you remove a few more parking bays, like being forced to go around the block if you wish to park on the opposite side of the street, and to parallel park, that is this town's parking future; for it is what the General Manager wishes for this town.

If you do not agree, or do not want parallel parking, as I believe the majority does not, you need to make your voice heard and your presence felt.

Council, that is Councillors are? - to approve any works before they commence; are all Councillors going to be at this public meeting to hear what St Marys really wants, or is it going to be left to the General manager who appears to believe that the majority of this town wants parallel parking?

I am still slightly confused re who is the authority behind the proposed works; the General Manager states it has nothing to do with Council, DIER are totally responsible. DIER state they only approve the proposals Council submit; maybe this will be sorted out at the public meeting.

David Watkins.

Brilliant Christmas gift ideas from Purple Possum!

Searching for something just that little bit different in gift ideas? Purple Possum now stocks a wonderful range of soaps with aromas such as lemon balm, lavender, olive, goat's milk and cocoa butter. Perfect gifts – and very affordable!

And for the man in your life, he can even take his beer into the shower – with Tassie-made Real Beer Shampoo!

Or how about making up a gift bag of ingredients to make rum balls, apricot balls, Christmas cake or Christmas puddings?

And for the sweet tooths, you'll also find an amazing range of lollies, nuts and chocolates!

Come in, sip on a cup of herbal tea or enjoy a freshly brewed coffee, while we help to take the stress out of your Christmas shopping!

Purple Possum

Wholefoods & Café

5 Story Street St Marys. Phone 6372 2655.

A Note from St Marys Fire Brigade.

It is that time of year again, when the grass is growing and the weather is warming up.

This means we should be looking at fire hazards around our property, ensuring we have good fire action plans in place and know what we are intend to do if a fire occurs.

It is a good time for fire hazard reduction but remember if you intend to do this by burning there are rules governing what and when you can burn.

The Break O'Day Council have bylaws in place that only allow backyard burning on the First and Third Saturday of the month between 8am and 3pm. There are also limitations on what can be burnt, waste must be dry and stacked lightly to allow air through, you are not allowed to burn green waste. The area must be cleared around and be able to be reached by a garden hose and watched by a responsible person while ever it is alight. Further info is available from the Council or their web site.

The fire permit period is not here yet and there is no date yet for implementing it. The permit period does not stop people from burning, it is there to allow fire service personnel to control the type and number of fires and the condition that fires are lit in.

If you intend doing any burning please phone the fire service on 1800 000 699 and register your fire - this can stop unnecessary call outs for the volunteers.

A Merry Christmas and Happy New Year to all, from the St Marys Volunteers.

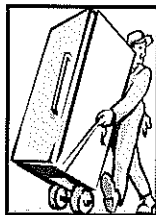


Ransley's Appliance Service

P O Box 136
Scamander Tas 7215

- Washing machine NOISY?
- Refrigerator runs too LONG?
- Clothes dryer blows cold AIR?

Then you need the service
of our technicians.



Ring us on: Scamander: 6372 5307
Mobile: 0428 761 811

Michael and Louise Williams would like to thank the council, especially Wayne Polden, and a massive thank you to Craig Cox and Bung for the work at the River Bank which was damaged from the floods.
Thank you, Michael & Louise.



Calls for Interest in Learning about and taking part in Rabbit Control in St Marys

We have noted a recent explosion in the rabbit population on our land. I rang BODC and they told me to call Lyndon Iles who is the Field Services Officer, Chemical Management Branch at the Department of Primary Industries Parks Water and Environment, Tasmania. They deal with rabbit control as a State based issue.

I mentioned to him that we have recently noted a LOT more rabbits on our property and that a number of others in town had said the same thing to me. He is willing to come out and talk to land owners about control methods, if we can get a small group together, also to discuss using the Rabbit Calicivirus Disease in late February 2012, this is due to the breeding cycle and the immunity of young rabbits up until that time.

If you would be interested in taking part in a rabbit control program locally and hearing more information from Lyndon please ring Janet or Rod on 6372 2851 to register your interest.

ANA'S HAIRDRESSING SALON



**BEHIND PURPLE POSSUM
STORY STREET, ST MARYS.**

**OPEN
EVERY TUESDAY & WEDNESDAY
9AM**

**BRINGING 22 YEARS EXPERIENCE
PROVIDING CUTS, COLOURS, PERMS S/SETS.**

**PHONE: 0448 532 531
ON TUESDAYS & WEDNESDAYS, OR JUST CALL IN.
OR PHONE 6372 5497 TO PRE-BOOK.**

**LOOKING FORWARD TO PROVIDING
A SERVICE TO THE COMMUNITY.**

St Marys Police Phone Number 6372 1010
Non Urgent Number 131 444
Urgent and Life threatening 000
SES (Flood & storm only) 132 500
Fire 000



Mt. Elephant Pancakes would like to wish everyone a Merry Christmas and a Happy and Safe New Year. Thank you to those who continue to support us throughout the year. We look forward to seeing you in 2012.



Thank you,
Michael, Louise & Staff.
(03) 6372 2263.



St Marys Christmas Carols



at the



**Salvation Army
Story Street**

Sunday 18th December, 2011

**Come and sing with
JAM (Jesus And Me)**



7pm start



**Proudly supported by the
Lions Club of St Marys Inc.**



all about Christmas

White Swan Estate
 1000 RIVERVIEW DRIVE
 IRONMOUNTAIN TASMANIA

Corporate Christmas party package

\$138 PER PERSON TWIN SHARE

INCLUDES CHRISTMAS TABLED DRINKS IN BOTTLES
 4 NIGHTS ACCOMMODATION FOR TWO PEOPLE
 CHRISTMAS GROUP VENUES IN EITHER BIRCHVALE
 OR LUNATION ROOMS FROM \$34.50 PER PERSON

Christmas gift ideas from Paradise

\$66.00 IRONHOUSE BREWERY CARTONS
 GIFT VOUCHERS, BEAUTIFUL TASMANIAN HANDMADE GIFTS

New Years Eve ~ LIVE MUSIC ~

SET MENUS FROM \$52 PER HEAD.
 A LA CARTE DINING & TRANSPORT AVAILABLE.
 WE ARE OPEN ALL FESTIVE SEASON!

CHRISTMAS DAY LUNCH MENU

STARTER:

HOT BUFFET:

selection of breads & butter

roast turkey
 glazed leg ham
 sweet & sour chicken
 sticky braised pork belly
 beef stroganoff
 selection of handmade condiments

SEAFOOD SELECTION:

whole tiger prawns
 east coast oysters natural
 whole baked fish
 unadorned mussels
 pickled Tasmanian octopus
 IronHouse roast beef & chicken
 grilled quail
 sliced cold meats; salami, prosciutto

COLD BUFFET:

HOT SIDES:

steamed rice
 Moroccan spiced cous cous
 potato dauphinoise
 steamed veg
 jacket potato

COLD SIDES:

pumpkin, pine nut & green bean salad
 potato & kumera salad
 crisp garden salad
 fennel & red cabbage salad
 beetroot & goats cheese salad

SAUCES & CONDIMENTS:

cranberry
 gravy
 mustard
 ketchup
 zucchini pickle
 house made tomato sauce
 apple sauce
 horseradish creme
 thousand island dressing
 aioli & mayonnaise
 none cream/ham jam

DESSERT BUFFET:

chocolate pots with raspberry condis
 fruit flans
 individual mince pie nests
 christmas pudding with brandy custard & red currant compote
 fruit salad with chantilly cream
 chocolate vanilla torte fingers
 berry tarts
 cheese boards

BUFFET SERVICE:

ADULTS \$85.00,
 CHILDREN 3 - 12 YEARS. \$55.00

PETIT FOURS:

macarons
 biscotti
 fudge
 honeycomb

TEA & COFFEE

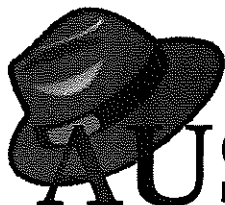


IRONHOUSE POINT - TASMANIA

1000 RIVERVIEW DRIVE IRONMOUNTAIN TASMANIA
 PH: 08 6224 2228 FX: 08 6224 2116
 E: EVENTS@WHITE-SWAN.COM.AU
 WWW.WHITE-SWAN.COM.AU

St Marys Sports Centre Inc

Presents



AUSSIE CHRISTMAS

Saturday 17th December

6pm

Prizes for best "aussie" dressed,
best couple & lucky door prize.

Featuring the now famous
Smokey Roast & Ham

Santa will be visiting

\$25 per person



Bookings:

Club-6372 2177

St Marys IGA-6372 2240

Main Street Clothing

6372 2211



DON'T MISS OUT ON A GREAT NIGHT!!!!



*Merry Christmas
from the
St Marys
Child Care Centre*

Taking enrolments for 2012 NOW !!

We will be closed for Christmas from
4.30pm on Thursday Dec 22nd
re-opening at
8.00am on Friday 20th Jan 2012

Opening Hours for 2012
8.00am - 4.30pm

For all enrolments etc please ring
Tanya on 6372 2187
or Northern Children's Network on
6341 1555
www.ncn.org.au



**Bow Wow
Dog Training**

Group Lessons
Sunday Mornings @ St Marys
Private Lessons – by arrangement
Enquiries / Bookings
call Michael **PH: (03) 6372 2056**

**Would you like to own
a well behaved dog?**

Bow Wow Dog Training offers training and
handling education to persons of any age and to
dogs of any breed
Puppy Training –

from 8 weeks to 5 or 6mths

Basic Training – caters for dogs over 5mths. All
training at this level is done on lead and covers
basic facets of general training

Intermediate & Advanced Training –
designed to further the standard of
previously achieved training and
off lead work

Agility & Flyball work also available

Trainer has 30 years experience – previously from
Victoria and believes that training should be fun for
you and your dog. Advice available for
behavioural problems

**CLEAN CUT
GARDENING**



TREE LOPPING & REMOVAL

INCLUDING DANGEROUS & CONFINED SPACE
OVER 15 YEARS EXPERIENCE



**GARDENING
LANDSCAPING
CONCRETING
SPLIT POSTS**



MINI EXCAVATOR WORKS

* FULLY INSURED * FULLY LICENSED *
* FREE COMPETITIVE QUOTES *
* PROFESSIONAL * RELIABLE & FRIENDLY SERVICE *
* 10% DISCOUNT FOR SENIOR PENSIONERS *
PRUNING & LOPPING COMPLY WITH AUSTRALIAN STANDARDS

SUPPORT YOUR TRULY LOCAL SMALL BUSINESS

**CALL ANDREW DAVENPORT TODAY ON
0419 11 38 36 OR 63 722 366**

*Merry Christmas from
Little Penguins
Child Care Centre Bicheno*



BOOK NOW for 2012 !!

we will be closed from **5.30pm** on
Friday 23rd Dec re-opening at
8.00am on **Tuesday 3rd Jan 2012**

**East Coast School Holiday Care
for 5 to 12 yr olds**

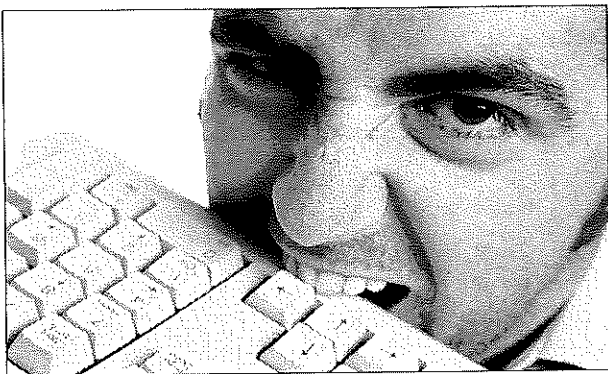
at War Memorial Hall Bicheno
8.00am - 5.30pm
commencing **Tues Jan 3rd** until
Friday Feb 10th 2012

For info & bookings etc please ring
Angela or Michelle on 6375 1800
or Northern Children's Network on
6341 1555



www.ncn.org.au





Computer Trouble?

- 15 years experience
- Home & business
- Hardware & software
- Websites & email
- Windows, Mac, Linux
- ADSL, WiFi, Satellite

Ray Walker

m **0401 497 199**

e **hello@raywalker.it**



DECEMBER

All sessions are held from 10.30-12.30

All Building Blocks sessions are free of charge and for children, parents, grandparents and carers of 0-5 years old year olds.
Come along and see!

Play & Learn sessions
We are participating in end of year celebrations and would love to see you at one that best suits you

7th Fingal Park
9th Scamander Beach beside The Mouth Cafe
13th - CFC St Helens -

Break up with Launching into Learning
9.00 - 12:00

Bring a small healthy plate to share

15th - St Marys District High School
Launching into Learning Break up
10:30 - 12:00

Bring a small healthy plate to share

Don't forget to wear hat as it is getting hot again

Cathy and Robyn would like to wish everyone Merry Christmas and look forward to seeing you again in the 2012

For more information or to share ideas/suggestions
Please call Cathy at Healthy House on
63765242 or 0400 002 116
Email: cathy.parker@healthyhouse.org.au

PING WELCOMES YOU TO HIS SHOP

PING'S PLACE

MAIN STREET

ST MARYS

ASIAN FOOD, VARIOUS NOODLES,
COODLES OF SAUCES,
CHINESE GREEN TEA, AND A WEALTH OF OTHERS;
CLOTHES MADE OF BAMBOO, KIDS TOYS GALORE,
CARDS, INCENSE, SOAP—YOU NAME IT!

PLAYING TABLE TENNIS EVERY DAY

DR LI, Ping's assistant, offers all forms of
Traditional Chinese Medicine

to ease you.

Ring 6372 2712,

for a free consultation & cost of treatment.

OUT OF THE WOODWORK

Wendy Brennan, Secretary 6372 2094

On behalf of the Woodcraft Guild we would like to wish everyone a safe and happy Christmas and New Year. Thank you to the community of St Marys for their unflinching support. To **Judy Spilsbury** (who keeps a keen eye on my grammatical errors) and all the volunteers of the Valley Voice. To **all the staff at the I.G.A** who have always been accommodating with any of the Guilds' needs. A special thank you to the butchers **Scott, Aaron and Danny**, who always made sure the snags met the approval of the discriminating taste of our regulars.

We have now ceased our monthly meetings, until the end of January. However, we are still open on our prescribed days.

As the song goes "A Merry day Christmas and a Happy New Year we all hope this is a Christmas without and tears".



The Guild meets on the last Saturday of every month at 2pm (will resume last Saturday **January 2012**) in the old railway goods shed situated behind the Railway Station complex. New members are always welcome. We are open Monday, Wednesday and Friday. Other times by appointment.

A supportive environment where traditional woodcraft skills are taught.

ST MARYS BAKERY

PH: 6372 2131

OPEN 7 DAYS A WEEK



**FRESH BREAD, ROLLS & BUNS,
PIES, PASTIES, CAKES, HOT FOOD,
COFFEE, COLD DRINKS,
ICE CREAM.**

52 MAIN ST ST MARYS.

'Tis the Season to be Sharing



All are Welcome!



**Come one, come all,
St Marys
Christmas Outreach**

**A bring and Share
Luncheon to be held**

at the

Anglican Church

12 PM

Saturday 10th December



**An afternoon of Fun
for all ages.**

**Games. Jumping Castle,
Christmas Carols and lots
of Good Community Spirit.**



New Council By Laws

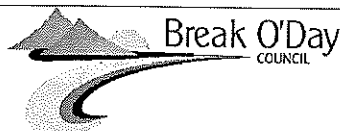
Council is currently consulting with the community on three new By Laws.

The By laws cover caravans on private land, Waste Disposal and the management of councils parks and reserves.

Copies of the proposed by laws are available from council or can be viewed at www.bodc.fas.gov.au

Consultation concludes on Monday 19th December 2011

Enquires can be made to Conor Breen, Tuesday to Thursday on 63767900



REMINDER RATES INSTALMENT DUE!

**The 2nd Instalment of rates is due
on the 2nd December 2011.**

Sick of remembering when each instalment is due?

Getting hit with interest and penalties for late payments?

Thought about signing up for direct debit?

No remembering when to pay – No fees – No interest – No penalties.

This is a free service offered by Council, we will calculate the weekly/fortnightly/monthly amounts for you and deduct that amount on the specified date.

Your rates will be paid in full prior to 30 June each financial year.

Each year this amount will automatically be adjusted for you, you don't have to do a thing.

Interested? Give Councils rates department a call on 6376 7 922.



Help Clean our Beaches

We are seeking volunteers to assist in the clean up of our beaches of driftwood from the recent flooding events.

The first working bee will be held on Sunday 4 December, 2011 – 9.45 am to 1 pm in the St Helens area

– Working bees will work in the following areas:

Stieglitz Beach
O'Connors Beach
Lions Park
Kirwans Beach
Beauty Bay
St Helens Foreshore Area.

If you would like to assist in the clean up – registration will occur at 9.45 am at the Lions Park – Parks & Wildlife Service will cover insurance for all volunteers except if anyone other than PWS staff are using chainsaw eg TFS Volunteers, they will need to be covered by their own agency. Parks and Wildlife will be providing vehicles to remove the debris.

The second working bee will be held on Sunday 11 December, 2011 – 9.45 am to 1 pm in the Scamander area including the River Mouth area – again if you would like to assist in the clean up – registration will occur at 9.45 am at the Scamander Reserve car park – Parks & Wildlife Service will cover insurance for all volunteers except if anyone other than PWS staff are using chainsaw eg TFS Volunteers, they will need to be covered by their own agency. Parks and Wildlife will be providing vehicles to remove the debris.

Chris Hughes
Manager Community Services
Break O'Day Council

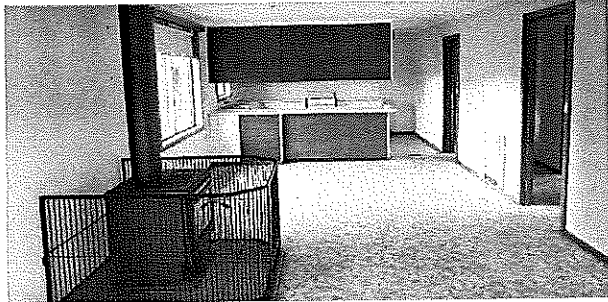
Surf Coast Realty

Binalong Bay to Bicheno and Hinterland

Ph: (03) 6372 5321

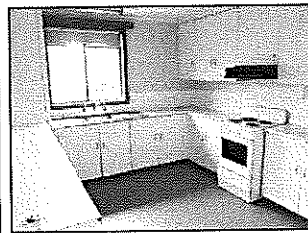
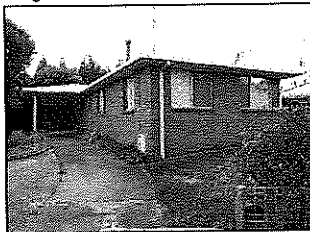
Suite 1, 158 Scamander Ave., Scamander

GREAT FAMILY HOME OR INVESTMENT

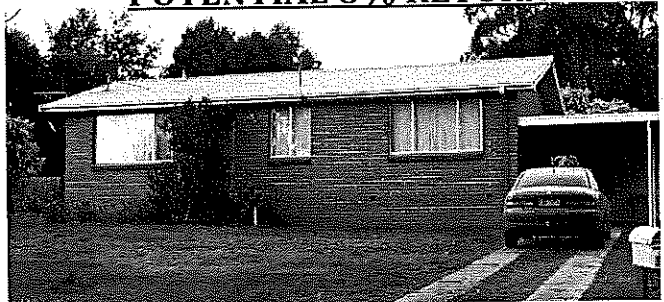


39 Gray Road, St Marys Price: \$150,00

- 4 bedrooms (3 x Built-in wardrobes)
- Potential rent of \$200 - \$220 p/w
- Large open plan kitchen, dining & lounge
- Wood Fire place & Electric Heating
- 3 double bedrooms & one single bedroom
- Walking distance to school, main street and shops
- Low maintenance
- Quiet location



**SUPER INVESTMENT -
POTENTIAL 8% RETURN**



31 Gray Road, St Marys Price: \$115,000

- 3 large bedrooms (All with Built-in wardrobes)

- Low Maintenance
- Large Block (1427m2)
- Potential Rent of \$180 p/w
- Electric Heating

- Ideal Investment opportunity
 - Walking distance to school, main street & shops
- This surplus Crown property is being offered for sale for the first time & offers first home buyers & investors the opportunity to secure a fantastic low maintenance home or investment. This could be an opportunity to get that place you have been looking for without blowing the budget. If you are looking for an affordable home or investment with good returns, this is well worth an inspection.

For further listings please visit
www.surfcoastrealty.com.au



If you are thinking of selling contact our friendly team on (03) 6372 5321 for an obligation free appraisal.

enquiries@surfcoastrealty.com.au

Honest

Reliable

Professional

St Marys
PHARMACY

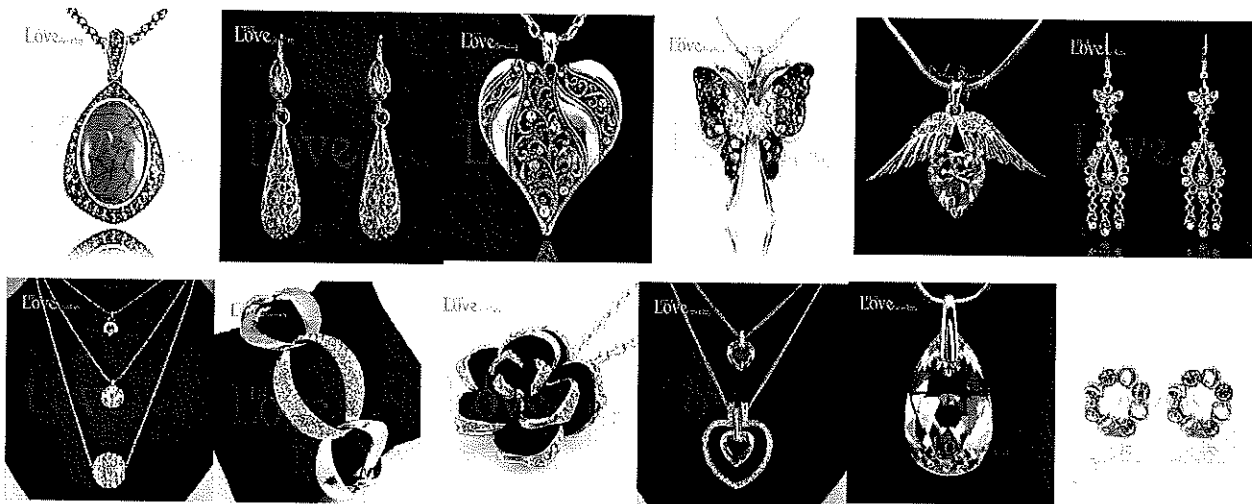
**Kodak quality
prints in seconds**

Pharmacist on duty 5 days a week

Main Street, St Marys Tas. 7215

Phone: 6372 2844 — Fax: 6372 2874

*Call in and view our new jewellery.
Something for everyone!*



**gone rustic
studio & gallery**

*an independent small business
supporting regional arts &
crafts in a renovated historic
industrial building*

**37 main st
st marys tas 7215**

10 dec (saturday) — launch of 'passages' exhibition from stitching & beyond (12 noon); christmas theme with finger food, tea & coffee (\$6 each; \$5 for members); rsvp required please

0363722724
gonerustic@yahoo.com.au

LAST TRADING DAY for 2011 — Thursday 23 December

FIRST TRADING DAY for 2012 — Thursday 5 January

online shopping:
www.gonerustic.com
www.gonerustic.etsy.com
www.pilgrimcottage.etsy.com

contemporary art & craft

agents for wide span kit sheds & homes

quilts, gifts & cards

exhibitions & workshops

AND pilgrim cottage collectibles

rustic ragamuffins
wednesdays 7-9 (\$5)

opening hours
10-4 or by appointment

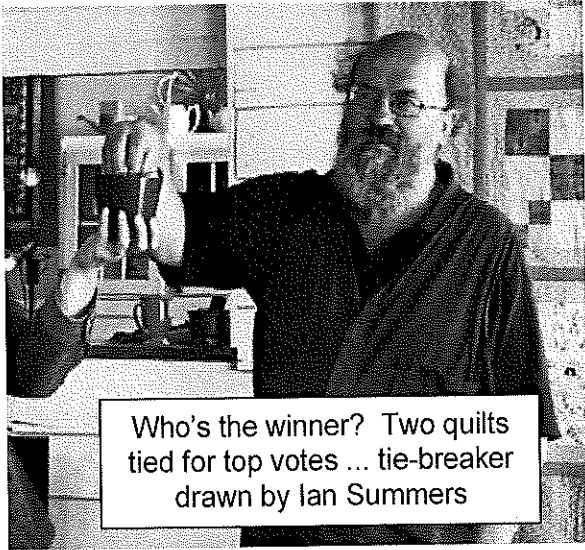
member of greater esk tourism &
tasmanian regional arts



(photo by Janet Drummond)

People's Choice Award – Friendship Quilt a Winner!

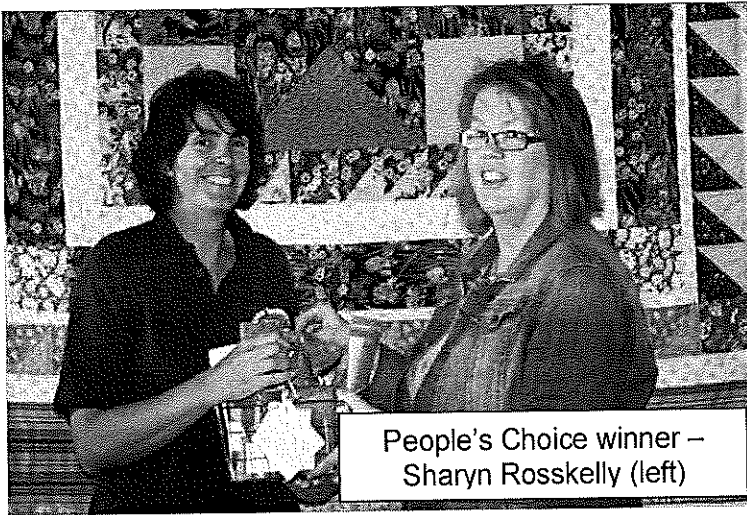
(awarded 25 Nov 2011)



Who's the winner? Two quilts tied for top votes ... tie-breaker drawn by Ian Summers



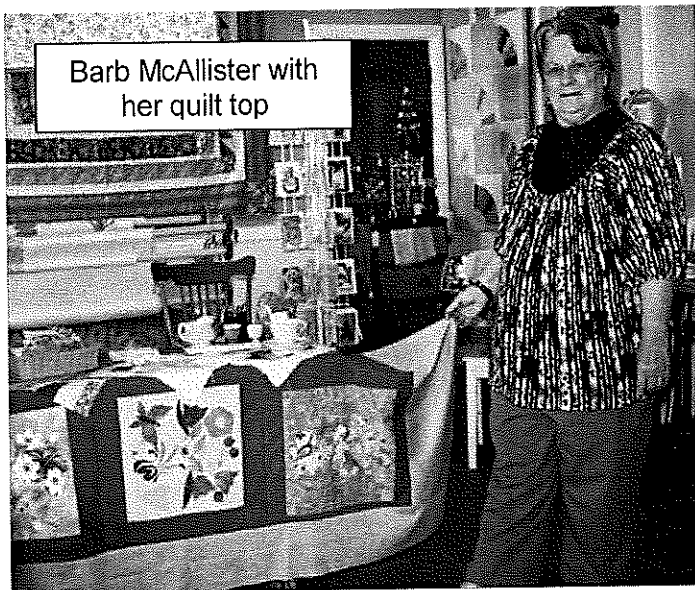
The winning quilt in the spotlight



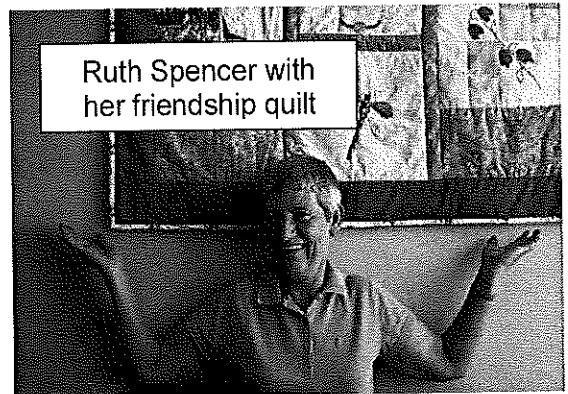
People's Choice winner – Sharyn Rosskelly (left)



Winner of 2nd prize – Maz Statham



Barb McAllister with her quilt top



Ruth Spencer with her friendship quilt



Rita Summers with her family quilt

Photos by Janet Drummond
Next exhibition: Passages (from 10 Dec)
Gone Rustic Studio & Gallery, 37 Main Street, St. Marys



COMMUNITY FUNDING PROGRAM

2011/2012

The Community Funding Program provides grants to communities to improve facilities/programs in their township or to improve the overall amenity of their town. All community groups that represent the ratepayers of their community are eligible to apply for funding.

Projects that will be considered for funding but not necessarily restricted to:

Beautification projects

Projects to improve or construct recreation facilities

Projects that will improve the amenity of the township/community

Projects that will not be considered:

Any projects on privately owned land or which cannot be freely accessed by all community members

Capital Works projects (ie. Footpaths, kerb and guttering etc.)

Eligibility

All community groups that represent the ratepayers of their township/area are eligible to apply for funding.

Only local **NOT-FOR-PROFIT** community groups will be given consideration for funding assistance.

Preference will be given to incorporated organisations with proven capacity to administer grants.

A detailed submission must be developed.

Applications can be made under the Community Funding Program up until
Wednesday 29th February 2012 .

For further information and
application form please contact

Chris Hughes or

Jenny Singline at the council.

Phone 63767900

chris.hughes@bodc.tas.gov.au/jenny.singline@bodc.tas.gov.au

ETHICAL SUPER

Time to make the change?

Speak to the ethical investing specialists



Tas Ethical
6234 6336
www.tasethical.com.au

Tas Ethical Pty Ltd is an Authorised Representative of
Financial Wisdom Ltd ABN 70 006 646 108 AFSL 231138



St Marys Lions Club Inc
Raising funds
for the Community

Support your Town with pride
by displaying your

\$3.00 St Marys Car Sticker



Available from: The Post Office, Newsagent,
The Purple Possum and Mt Elephant Fudge



Rock 'n' Roll dance party

28th January 2012

6:30 - 10:30pm

St Marys Community hall

Rock n' roll music 50's 'til now

Prizes for best dressed, best dancers, etc

Food & drinks available

Fun family night out

More details 0427713195

Councillor's Corner

Cllr Reon JOHNS

Like to raise an issue? Please feel free to contact me on mobile 0429 722 091 or fax 6372 2098

What are Rates?

Council services are financed through the rating of properties. As property owners benefit especially from the availability of local services it is fair that all landowners in the municipality must contribute to the provision of these services.

Rates are a contribution towards the cost of local Council in providing direct and indirect services which contribute to the development of the whole community and this can result in the added value of land. The method of dividing the bill between property owners is by *rating*. The municipal council assesses each by a rate of so many cents in the dollar of the value of their property, currently 6.72 cents in the dollar. Most ratepayer polls around Australia have found a majority favour the 'Land Value' method.

A range of options are available to Councils in setting rates including:

- setting a minimum rate
- having a fixed charge apply to all properties plus a rate
- differential rates for different categories of land use; and
- Two-tiered rating (applying a different rate above certain property values) to ensure that the incidence of rates best matches the capacity and needs of the community.

The principle of local government finance is to split the cost between property owners in proportion to the value given to their property by the services made available.

- They should be expected to meet the cost of providing and maintaining these services.
- This assumption simply seeks payment in accordance with value given.
- The payment into the municipal fund pro rata to the benefit given by all services, to enable similar services to be extended to other sites or to the same site at a later period.

This does not require a precise balancing of the increments of land value given to particular sites by particular services, or their cost for a particular site.

Under Section 90 of the Local Government Act 1993, Tasmanian Councils have the option of using one of three rating systems:

S 90 (3) A general rate is to be based on one of the following categories of values of land:

(a) the land value of the land;

Land value is the value of the property excluding all visible improvements such as buildings, structure, fixtures, roads, etc.

(b) the capital value of the land;

Capital value is the total value of the property and includes the land value.

(c) The assessed annual value (AAV)

AAV is based on the rent which a property might return to the owner.



ATTENTION!!

Christmas Parade & Party on again

The Lions Club of St Marys Inc. will once again be holding a Christmas Party and Parade on Christmas Eve, 24th December, 2011.

Put your thinking caps on, get with your friends and make a float for the parade. There are many simple ideas that can make good entries for the parade.

The jumping castle and ball pit have been ordered and a BBQ will be run by the club.

If anyone is available to assist our club again this year, with the running of the party, we would be most appreciative.

Contacts: President David Young, John and Ruth McGiveron or any other club member.

Rae & Partners

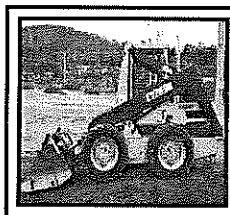
Lawyers Barristers & Solicitors

Visiting :

St Marys Community Health Centre

Alternate Tuesdays : 9 am – 10 am

Ph: 6337 5555 For appointments.



BOBCAT HIRE

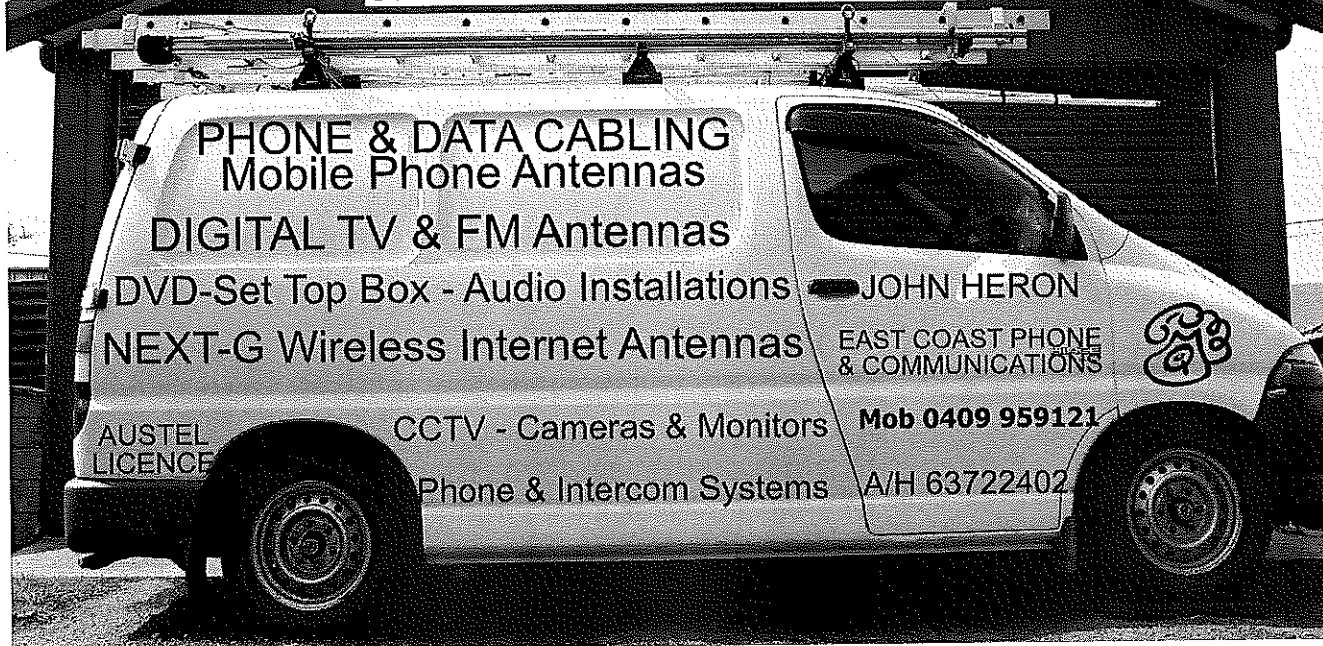
- * Site cleaning & leveling
- * Excavations
- * Post hole digging
- * Landscape preparation

SAVE HOURS OF HARD WORK.

GIVE MARK A CALL

Ph: 6372 2145.

EAST COAST PHONE & COMMUNICATIONS



PHONE & DATA CABLING
Mobile Phone Antennas

DIGITAL TV & FM Antennas

DVD-Set Top Box - Audio Installations

NEXT-G Wireless Internet Antennas

AUSTEL
LICENCE

CCTV - Cameras & Monitors

Phone & Intercom Systems

JOHN HERON

EAST COAST PHONE
& COMMUNICATIONS

Mob 0409 959121

A/H 63722402

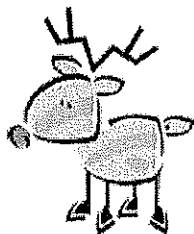


Dick Adams MP

Federal Member for Lyons

*A Merry Christmas To All, And All The Best
For The New Year*

Please contact my office if I can be of any assistance



53B Main Road
PO Box 50
Perth
Tasmania 7300

Phone: 6398 1116

Toll Free: 1300 132 689
Email: D.Adams.MP@aph.gov.au

Written and Authorised by Dick Adams, 53B Main Road, Perth, Tasmania 7300

Strawberry Jelly

**Strawberry Jelly
is back!**
At St Marys Hall Markets

SATURDAY 3RD DECEMBER

*Stock up on your
\$2 incense
\$2 soap
Prayer flags
Body Jewellery
Indian/Tibetan gifts
Wish beads*

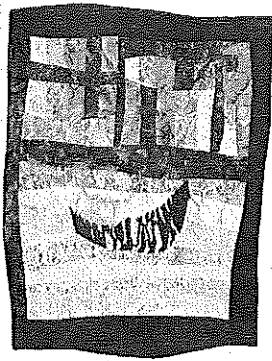
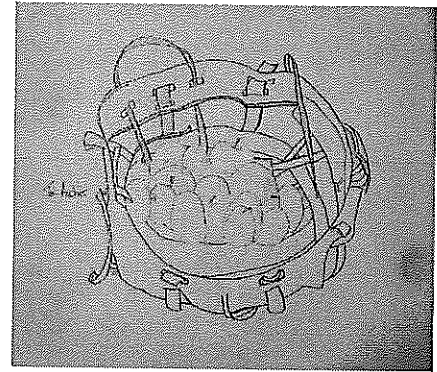
**Can't get there?
Ring Kelly 0427 713 195
I will deliver.**



EVENTS

TABIS COLLECTION

Tasmanian Acquired Brain Injury Syndrome
"The lives and thoughts of the artists , achievements
of a remarkable group"
Now showing 'til Jan 30
At the **e.ScApe Cafe**
Entry to Exhibition is free



"PASSAGES" This exciting touring exhibition of textile works will be on display at **"Gone Rustic Studio and Gallery"** in December, dates to be announced. Stitching and Beyond is a group of over 300 members who have a passion for fabrics, fibre and threads, colour and texture. This exhibition explores ideas such as tunnels, passages, trips, journeys, hallways, roadways, transit, voyage, poems, chapter, to weave, to emerge and more.

EXTRA .. EXTRA .. MARKETS

Sat 3rd December
Sat 17th December
Sat 7th January 2012
Sat 21st January

ROCK 'N' ROLL DANCE Sat 28th January 2012 St. Marys Community Hall

ST. PATRICKS HEAD FESTIVAL Sat 17th March 2012 St. Marys Township

ST. MARYS MARKETS

Rain, Hail or Shine
1st Saturday of every month
Community Hall, St Marys - 9 am start
Fresh Produce, Art, Craft, Trash and Treasure
Mini Raffle drawn every market day
Wood raffle won by K. Balzar
Phone Robina 63722022



St Helens Flowers

Donna of St Helens Flowers takes all the fuss out of ordering flowers.

Arrangements, Bouquets, Gift Baskets, Wedding Flowers, Floral Tributes

Member of the Petals network—we can now send or receive flowers worldwide!

Fantastic Fresh Flowers delivered to your door or statewide

Ph Donna—6376 1211

 Fun Range of Helium Balloons! 

COMMUNITY KITCHEN PROGRAM

Would you like to learn how to save money, eat a more varied diet and improve your health and wellbeing?

Community Kitchen Program is for anyone and everyone. Participants will come together to socialise and cook delicious, affordable and nutritious meals which they then share together.

You do not need to have any previous cooking experience as a trained kitchen facilitator will be there to help.

WHERE: St Marys Community Hall

WHEN: Monday Evenings 6 pm— 8.30 pm

DATES: 7th November to 12th December

COST: \$2 per week

Bookings are essential

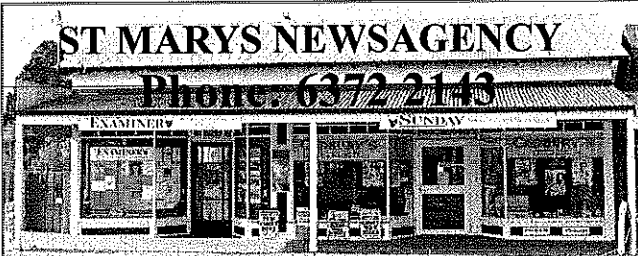
Call Healthy House at 6376 5242

Funded by the Australian Government Department of Health & Ageing under the Rural Primary Health Services Preventative Health Initiative

SHOP LOCALLY AND SAVE



CALTEX ST MARYS
MECHANICAL REPAIRS & SERVICE
PH: 6372 2335
TYRES
LUBES
EXPOS
BATTERIES
41 Main St. St Marys Tas 7215
Fax: 6372 2822 Mob: 0419 503 109



ST MARYS NEWSAGENCY
Phone: 6372 2143
EXAMINER
SUNDAY

Open 7 days a week for your convenience.
6am -7pm Mon. to Fri. 7am -6pm Sat. & Sun.

CALOWS BUS DEPOT

AURORA PAYG



**Christmas
stock now
arriving.**



**Come in and have
a look.**

We sell all phone cards.

**CLEAN CRACK LAUNDROMAT
MAIN ST
ST MARYS
(NEXT TO SECONDHAND ROSE)
IS NOW OPEN
FOR BUSINESS**



St. Helens Electrical

ROD SHAW
LIC: C00489

Domestic, Commercial, Industrial:
*Wiring and Repairs, Rewires,
Underground.*

Home Heating:
*Advisory, Sales & Installation of heat
pumps and fixed heaters.*

Lighting Specialist :
*Interior and exterior, Advise,
Sales and Installation.*

Ph: 6372-5522 Mbl: 0407-615-072
2 Lagoon Esplanade, Scamander 7215

The Valley & East Coast Voice Guidelines.

- Opinions in any letters published are not necessarily the views held by the editor and voluntary workers.
- Our pages will remain open to fair and honest criticism, so that on all questions, both sides may be presented, but any letters containing personal attacks or hinting at libel or slander will not be accepted. Stick to the issue rather than making personal attacks.
- Please do not attack the editor, the paper or the authors of previous letters.
- Letter writers will be given the chance to respond over a suitable period of time, but anonymous and/or non-de-plume letters received as from 11-02-10 will not be published. Subjects may be closed at the editor's discretion.
- Please make sure of your facts. Do not write letters just to let off steam. Letters most commonly published are those that have bearing to current community issues.
- Keep letters short, simple and to the point. Letters are restricted to 300 words or less.
- The Editor reserves the right to edit your letter for grammar, spelling or reduction in size where necessary.
- All letters arriving by post must be signed, including a printed name and also contain your contact details, such as full name, address and phone number.
- All letters sent by email must contain your contact details, such as full name, address and phone number.
- All letters left at drop-off points must have a signature, plus a printed name and also contain your contact details, such as full name, address and phone number.
- Do not be discouraged if your letters don't get published. Whilst each submission is reviewed on its own merits, we generally receive more letters than we have space available.
- The Valley & East Coast Voice reserves the right at all times, without notice, to update, change or amend our guidelines. Whilst we value & welcome community letters, The Valley & East Coast Voice does not provide specific feedback regarding any decision made not to publish a submission.

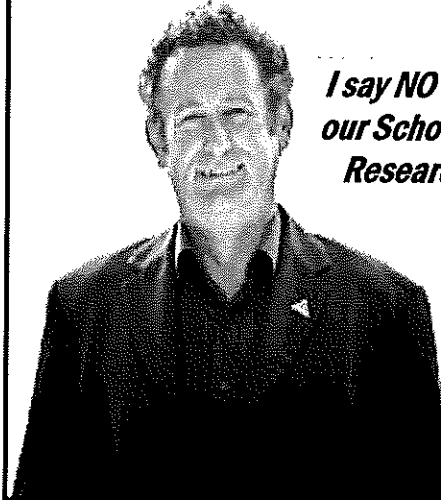
Tim Morris MP

Tasmanian Greens Member for Lyons



Tasmania

***I say NO to selling off
our School Farms and
Research Stations***



New Address: Shop 9, Covehill Shopping
Centre, Bridgewater 7030

Phone: (03) 6263 3801

E-mail: greens@parliament.tas.gov.au

www.tas.greens.org.au

Authorised by Tim Morris MP, Parliament House, Hobart 7000.

HARRIS FUNERALS

Lindsay & Diane

(D. Bailey & son) A.F.D.A

Ph/Fax: 6376 1153 Mob: 0418 133 420

Office & Residence:

114 Cecilia St
St Helens

Chapel:

46 Tully Street
St Helens

**We are here when you need us
to arrange Burial or Cremation.**

Pre-paid and pre-arranged funeral plans are available.



EAST COAST GLASS

Falmouth Ph: 6372 5361

- ▶ Glass repairs
- ▶ Shower screens
- ▶ Wardrobe doors
- ▶ Double glazing
- ▶ Aluminium windows
- ▶ Security doors



Locally owned and servicing the East Coast.

**Call David and Anne Cannon
for prompt and reliable service.**



Break O'Day Council
Australia Day Awards 2012

Citizen of the Year & Young Citizen of the Year

Award Description:

Citizen of the Year:

To be eligible, the person must be 27 years or older on or before the 26th January 2012.

Individuals Eligible for Award:

Persons who have made a noteworthy contribution during the current year and/or given outstanding service to the local community over a number of years shall be eligible

Young Citizen of the Year:

To be eligible, the person must be under 27 years of age on or before the 26th January 2012.

Individuals Eligible for Award:

This award is for a young citizen who has made a noteworthy contribution during the current year and/or given outstanding service to the local community over a number of years.

Nominations for Awards close 5.00pm Friday 16 December, 2011.

Nomination forms available from the Break O'Day Council Office, or email

Chris.hughes@bodc.tas.gov.au

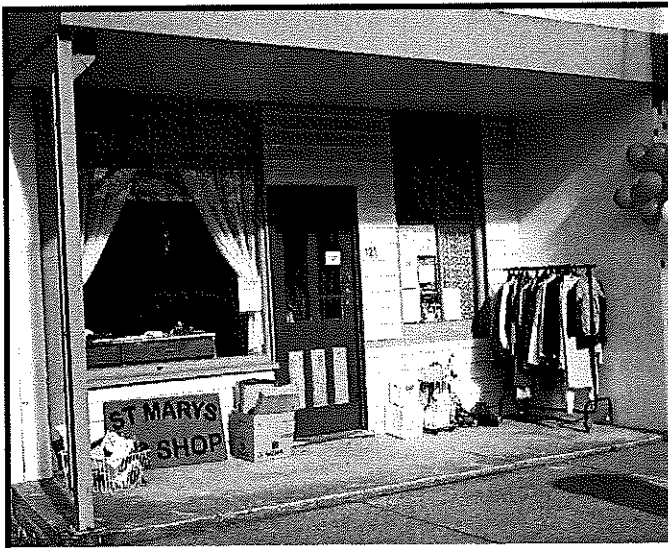
Jenny.singline@bodc.tas.gov.au

Council will not accept any late nominations.

Postal Details:

Australia Day Awards
Break O'Day Council
PO Box 21
ST HELENS TAS 7216

Awards will be presented at the Australia Day Award Ceremony on January 26th 2012



St Marys Op Shop

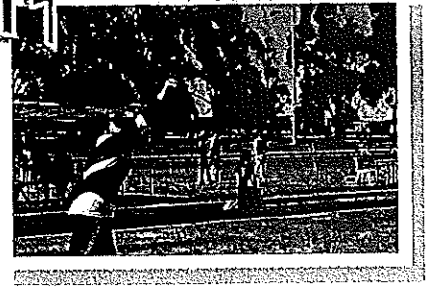
Summer Trading Hours
10am - 4pm, Mon - Fri.

NOW OPENING MARKET DAYS

First Saturday each month
from 10am -2pm.

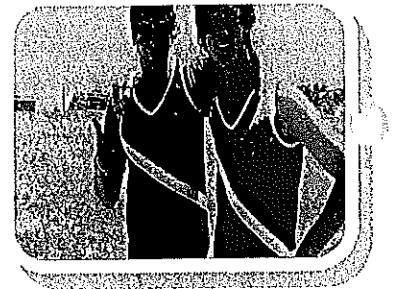
Donations of summer clothing,
gratefully received.

Interhigh Athletics 2011



Thursday 10th November 2011

An enthusiastic and keen team of 41 athletes, 5 amazing staff members (Ms Morgan, Mr Lynch, Ms McHenry & Mr Pickett) and one dedicated recorder (Mrs Death) travelled to Launceston to compete in the Division 3 Interhigh Athletics competition. The weather was perfect, for running, throwing and jumping and our team demonstrated many outstanding performances. We competed against 5 other schools, Campbell Town, Winnaleah, Star of the Sea- Christian Academy and Cressy, in a day filled with fun, enjoyment and great sportsmanship.



Congratulations to our athletes for their excellence in competition and, as usual, demonstrating fantastic support of each other! Well Done!

Results: We came second in the Junior shield, second in the Senior shield and 3rd Overall, but we won the ultimate event..... the Tug Of War! (and we are still awaiting the trophy being held by the previous school!)

Team Members:

Grade 7 Girls: Jacinta Kringle, Lydia Hunt, Molly Quin, Lisa Freeman, Jorgia Woods

Boys: Lochlan McKenzie, Haydon Dawson, Sam Tunks, Zac Symons

Grade 8 Girls: Avalon Chippindale, Ayla Harvey, Ebony Bennett, Maya Ling, Dakota Wise

Boys: Sam Mitchell, Jesse McColl, Gavin Kerr, Nathan Dawson

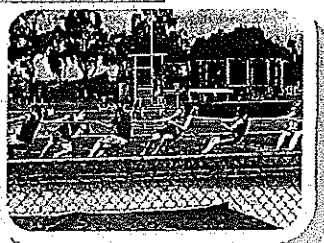
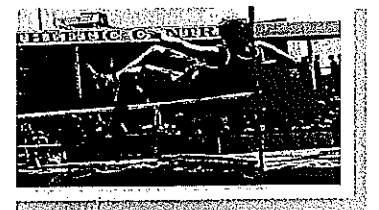
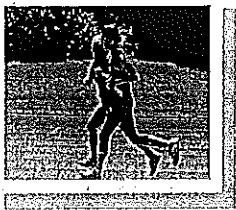
Grade 9 Girls: Kara Nankervis, Lana West, Kerby Bradbury, Carly Brown, Maddie McGill

Boys: Baden Alexander, Jye Baldwin, Jye Pribil, Mitchell Thomas, Zach Gluth, Ben Bishop

Grade 10 Girls: Nina Ling, Elka McColl, Sherelle Bowron, Jessica Reynolds, Jodie Thomson,

Shantelle Arratta, Katie Singline, Evie Samoilov

Boys: Jack Broughan, Corey Thow, Stephen Lea, Mason Pitstock,



ST MARYS COMMUNITY HEALTH CENTRE

WHAT'S ON AT THE CENTRE

- 30 Nov **Day Centre**- For details on the group please contact Hayley Gilbert 6372 2111.
- GP North Mental Health Worker**- Brady Young for appointments please see your GP for a referral.
- Social Worker**- Shan Williams appointments available by phoning 6372 2111
- 1 Dec **Relationships Australia**- Leanne McMurtie for appointments please phone 1300 364 277
- Social Work**- Shan Williams. Please phone 6372 2111 for appointments
- Get The Most Out Of Life**- Chronic Disease Self Management Course 10am-12:30. Gold coin donation. Please phone Shan or Hayley on 6372 2111 for details.
- GP Podiatrist**- Annabel. Please see your GP for a referral.
- 2 Dec **TABIS (Tasmanian Acquired Brain Injury Service)**- Hannah Rubenach phone 0437 076 100
- Social Work**- Shan Williams. Please phone 6372 2111 for appointments.
- 5 Dec **GP North Mental Health Worker**- Brady Young for appointments please see your GP for a referral
- Hospital Auxiliary Meeting** 2:00pm in the Day Room
- 6 Dec **Child Health Session** with Sue Gofton every Tuesday- Appointments only. Please phone 0428 136 381
- GP North Mental Health Worker**- Brady Young for appointments please see your GP for a referral
- Mental Health Clinician/ Case Manager**- Faye Thordardottir. For appointments please phone 1800 332 388 where a referral will be lodged for you.
- Counsellor**- Ellen Naef. Please phone 0409 864 182 for appointments. Ellen is located downstairs at St Marys Health Centre in the Healthy House.
- 7 Dec **Day Centre**- Christmas Luncheon. For details on the group please contact Hayley Gilbert 6372 2111.
- GP North Mental Health Worker**- Brady Young for appointments please see your GP for a referral
- Podiatry North**- For appointments please phone 6336 5155
- Mental Health Clinician/ Case Manager**- Faye Thordardottir. For appointments please phone 1800 332 388 where a referral will be lodged for you.
- 8 Dec **Social Work**- Shan Williams. Please phone 6372 2111 for appointments
- Get The Most Out Of Life**- Chronic Disease Self Management Course 10am-12:30. Gold coin donation. Please phone Shan or Hayley on 6372 2111 for details.
- GP North Mental Health Worker**- Brady Young for appointments please see your GP for a referral

WHAT'S ON AT THE CENTRE Continued...

- 9 Dec **Social Worker**- Shan Williams appointments available by phoning 6372 2111
- TABIS (Tasmanian Acquired Brain Injury Service)**- Hannah Rubenach phone 0437 076 100
- 12 Dec **Mental Health Clinician/ Case Manager**- Faye Thordardottir. For appointments please phone 1800 332 388 where a referral will be lodged for you.
- GP North Mental Health Worker**- Brady Young for appointments please see your GP for a referral
- 13 Dec **Counsellor**- Ellen Naef. Please phone 0409 864 182 for appointments. Ellen is located downstairs at St Marys Health Centre in the Healthy House.
- Child Health Session** with Sue Gofton every Tuesday- Appointments only. Please phone 0428 136 381
- Tom Bain, Rae & Partners Lawyers**. At the Community Health Centre Tuesday fortnights. For appointments please phone 6337 5555
- Mental Health Clinician/ Case Manager**- Faye Thordardottir. For appointments please phone 1800 332 388 where a referral will be lodged for you.
- 14 Dec **Day Centre**- Last week for 2011 For details on the group please contact Hayley Gilbert 6372 2111
- Social Work**- Shan Williams. Please phone 6372 2111 for appointments.
- GP North Mental Health Worker**- Brady Young for appointments please see your GP for a referral
- 15 Dec **Relationships Australia**- Leanne McMurtie for appointments please phone 1300 364 277
- Continence Nurse**. For appointment please see your GP or Health Professional for a referral.
- Get The Most Out Of Life**- Chronic Disease Self Management Course 10am-12:30. Gold coin donation. Please phone Shan or Hayley on 6372 2111 for details.
- Social Worker**- Shan Williams appointments available by phoning 6372 2111
- 16 Dec **Social Work**- Shan Williams. Please phone 6372 2111 for appointments
- TABIS (Tasmanian Acquired Brain Injury Service)**- Hannah Rubenach phone 0437 076 100
- Dietician (GP North)** - Appointments available by referral from your GP
- Diabetes Educator (GP North)**- Appointments available by referral from your GP
- Exercise Physiologist (GP North)**- Appointments available by referral from your GP
- Women's Health Clinic**- Dr Libby Reeckman. For appointments please phone 6372 2111

ST MARYS COMMUNITY HEALTH CENTRE

DOCTORS ROSTER

- Dr Latt 30/11/11-16/12/11
- Dr Libby Reeckman 16 Dec
Women's Health Clinic

St Marys Community Health Centre

GP Surgery Hours:

Monday—Friday 8:50am-12:30pm
12:30pm-1:30pm LUNCH
1:30pm-4:30pm

PATHOLOGY SERVICE

No Pathology Service between
12:00-1:30pm or before 8:30am daily.

If you require Pathology before 8:30am an appointment **must** be made with the Nurses Station the day/night before.

INR TESTS

A doctor's appointment is required if you are having an INR test. Please let reception staff know when making your appointment that you are having an INR test. This is a 5 minute doctor consult.

AFTER HOURS SERVICE

CONTACT NUMBERS

PLEASE PHONE GP ASSIST ON
1300 780 011

AMBULANCE 1800 008 008 or
EMERGENCY 000

COMMUNITY HEALTH CENTRE 6372 2111

**PLEASE RING BEFORE
PRESENTING AFTER HOURS**

Women's Health Clinic

Dr Libby Reeckman will be having a Women's Health Clinic on Friday 16th December 2011. If you require an appointment please phone 6372 2111. Waiting periods do apply.

FREE Pap Smear and Sexual Health Clinic

At the Healthy House St Helens
5 Portland Court, St Helens, TAS. 7215
Thursday 1st Dec and Friday 2nd Dec 2011
For appointments please phone 6376 5242
Don't delay appointments go fast!

SCRIPTS AND DOCTORS APPOINTMENTS

Please ensure doctors appointments are booked **prior** to your medication/s running out or **in advance** if you are attending this practice regularly.

Scripts **can not be requested by patients over the phone** and are unable to be done over the weekends, ensure you have enough medications in advance.

PLEASE BE PATIENT waiting periods can apply



International
Volunteer Day

CERTIFICATE OF APPRECIATION

Awarded to

The Volunteers

In recognition of your contribution to the
community on behalf of
St Marys Community Health Centre

Presented on

International Volunteer Day

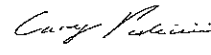
5th December 2011



International
Volunteer Day


Yvonne Webber- DON

St Marys Community Health Centre


Cary Pedicini

Chief Executive Officer
Volunteering Australia

MEALS ON WHEELS ROSTER

December	St Marys	Fingal
Monday 5th	Lorraine Gill	Neighbourhood House
Tuesday 6th	Trish Pike	
Wednesday 7th	Lundy Vosper	
Thursday 8th	Kaye Nailer	
Friday 9th	Val Spencer	
MOW Contact		Phone: 0488 384 344
Monday 12th	Debbie Barnes	Neighbourhood House
Tuesday 13th	Pam Bretz	
Wednesday 14th	Lorraine Gill	
Thursday Dec 15th	Yvonne Salter	
Friday 16th	Hannah Rubenach	Neighbourhood House

Church Services

Catholic Parish of St Marys

Sr. Lorraine Groves
Parish House. Ph: 6372 2252
Mob: 0409 172 741

1st Sunday: MASS

St Helens Vigil L/W 6.00pm
Bicheno L/W 9.00am
Fingal 11.30am

2nd Sunday: LITURGY

St Helens Vigil LWC 6.00pm
St Marys LWC 9.00am
Bicheno LWC 9.00am
Fingal LWC 9.30am

3rd Sunday: MASS

St Helens Vigil 6.00pm
St Marys 9.00am
Fingal 9.30am
Bicheno 9.00am

4th Sunday LITURGY

St Helens Vigil 6.00pm
St Marys 9.00am
Bicheno 9.00am
Fingal 9.30am

5th Sunday LITURGY

St Helens Vigil 6.00pm
St Marys 9.00am
Bicheno 9.00am
Fingal 9.30am

Enq: Baptisms & Weddings
Ph: 63 31 4377
Church of Apostles
Presbytery
Officer Hours: 10.00am - 3pm.
Sr Marjorie Ph: 6381 1122.

Anglican Parish of Northern Midlands

Avoca: 11am 2nd/4th Sundays
Fingal: 3 pm 1st/3rd Sundays
Mathinna: 3pm 2nd/ 4th Sundays
Ross: 11am 1st/3rd Sundays
Campbell Town: 9am every Sun.
(3rd Sunday -Family Service)

Anglican Parish of Break O'Day

Ph: 6376 1144

St Helens Every Sunday
8 am and 10.30 am
St Marys Every Sunday
10am

Pyengana: Kids Church,
2pm - 4th Sunday every month.

Salvation Army TUESDAY JAM

3-5pm every Tuesday.
excepting school holidays.
Envoy Melanie Norton Ph: 63722099

Break O'Day Uniting Church

The Manse St Helens
Ph: 6376 2405

St Helens 9.00 am
Fingal 11.15 am

Seventh Day Adventist

Hodgeman Street Scamander
Sabbath School 10 am
Divine Service 11 am

Contacts for Valley Voice

PH: Judy: 6372 2155
email: judith.spilsbury@telair.com.au
Accounts: Mary: 6372 2328

Please leave written material at the
St Marys Pharmacy,
Main St, St Marys,
or post: C/- Post Office, St Marys Tas 7215

Advertising: 2011

Classifieds: 25 words or less: free
Community notices : free.
Small boxed ads. Garage sales. Greetings.
Thanks etc. \$12.
¼ page \$20. ½ page \$30.
Full page \$50.
1 year posted subscription \$40.

On Air Now!

**Vision FM 88.0 at
St. Marys, St Helens and Fingal.**

The Breakfast program is now hosted by
Matt and Karen on weekdays.
There are now over 500 stations
Australia wide.

100% positive music & talk all day long;
connecting faith to life.

National Vision Radio Network.
Phone 1800 007 770.

St Marys Online Access Centre Opening Hours:

Monday 10am -3pm
Tuesday 10 am-4pm
Wednesday 10am-4 pm

Thursday 10 am - 3 pm
Friday 10 am - 3 pm
Saturday 11 am - 2 pm

Ph: 6372 2005

ST MARYS OP-SHOP

SUPPORTING YOUR LOCAL SCHOOL

**NEW SUMMER OPENING HOURS:
STARTING MONDAY 3RD OCTOBER
MON TO FRI. 10AM — 4PM
(WHERE VOLUNTEERS ARE AVAILABLE)
ST MARYS MARKET SATURDAY
10AM—2PM
PH: Janet Drummond: 6372 2851.**

The summer opening hours have now
started - 10am-4pm.

Shop will only be open as volunteers are
available. So sometimes the shop might
have to open late or close early.

If you're interested in assisting the school
and volunteering at the Op Shop, please
contact Janet Drummond 6372 2851.

St Marys Sports Centre Inc. news Kackhander

Despite the imminent chance of the rain continuing on last Sunday after the solid falls all day Saturday, ten hardy souls ventured out to play the Spilsbury Trophy.

Well done to every single player who took part bar none. Top effort. A special thanks to other individuals especially. To Rod, Betty, Keith and Elma and the whole Spilsbury clan, thank you for once again sponsoring this special event on the club calendar. Also another very special thanks to "Macca" McDonald. It simply wouldn't have happened at all if it wasn't for this dedicated bloke who has forgone other things to do the hard yards in organising this event along with many others, in turn keeping the wheels turning. THANKYOU. Congratulations go to Roger Donald who won this year's trophy with a great 66 nett. That's a seriously good score... and he hates stroke events.

What would he shoot if he liked it? Another great result was Blairy Spilsbury's nett 67. With great pride both are lefties... Scoring well also was Barry Harrison and Mark Carrick with 72 netts. A gross trophy went to Mark Carrick also. Well done. Not sure what's on next week but there WILL be golf if enough wish to play.

To bowls, and well done to both the men's and women's sides who recorded top wins against a very determined Bicheno line-up the week before last. Well done to all. Unfortunately the blasted rain 'dampened' the spirits last week when we had the chance of a very winnable home game to back it up. No joy.

This week the team travels to Swansea to see if we can add some points.

Slow start but Barefoot Bowls is still on at the club for new players on Friday nights. Come along if you wish to try a great new game.

Not too far away is East Coast Fours, Club championship games and the highlight in late December of the fantastic Clive Berwick Memorial Trophy. Plenty happening as they say. Don't forget the Aussie Christmas do also... see what I mean?

Until next time, good hitting and rolling.



Happy Hour!



ST MARYS SPORTS CENTRE INC.
Every Friday – 6.30 - 7.30pm
drinks at discounted prices

Ph: 6372 2177

PRINTED AND
 PUBLISHED BY
 VALLEY VOICE
 PUBLICATIONS,
 ST MARYS TASMANIA
 7215.



38 Main Street St Marys
Phone/Fax 6372 2240 - Butcher Ph: 6372 2274
Mon – Fri 8am – 6pm
Sat 8am - 12 noon Sun - closed

This week's specials.

(available from Thurs 1st Dec - Wed 7th Dec)

from the butchery

Round steak	\$ 7.99kg
Blade roast/steak	\$ 7.99kg
BBQ lamb chops	\$ 9.99kg
IGA chicken breast fillets	\$12.99kg
Ingham marinated chicken wings	\$ 7.25kg

from the freezer

Peters Original icecream 2lt	\$3.99
Baron's table chicken kiev 350g	\$6.99
Peters icy poles 8pk	\$3.49
Nestle drumstick 24pk	\$21.99
Papa Guiseppe family pizza 485g	\$3.99

grocery lines

Nescafe Blend 43 coffee 100g	\$4.99
Golden Circle sliced beetroot 450g	.99c
Sanitarium weetbix value pk 1.3kg	\$3.99
Nestle milo 750g	\$6.99
Arnotts sweet plain biscuits 250g	\$1.69

next week's specials

(available from Thurs 8th Dec - Wed 14th Dec)

from the butchery

Porterhouse steak	\$15.99kg
Beef mince	\$ 9.99kg
Gerello roasts	\$ 9.99kg
Round steak	\$ 9.99kg
Ingham chicken thigh fillets	\$10.99kg

grocery lines

Cottees cordial syrup double concentrate 1lt	\$2.99
SPC exotic fruit tubs 695g	\$1.49
Kleenex cottonelle toilet tissue 8pk	\$3.99
Cadbury medium bars 30/60g	.99c
Radiant micromax laundry powder 1kg	\$5.99
Smiths potato chips 175g	\$1.99
Kelloggs coco pops 375g/ Just Right 460g	\$3.99
Snugglers disposable nappies 24/36s	\$9.99
Nanda pasta range 500g	.99c
Pedigree Adult dry dog food bonus 12kg	\$19.99

Orders now being taken for all your
 Christmas needs.

**HAMS, TURKEYS, DUCKS,
 CHICKENS, ROLLED ROASTS,
 PRAWNS.**

Drop in and ask one of our helpful staff for
 any of your Chrissy requirements