

The Valley & East Coast Voice

Est. 1968

Volume 44 No. 2. Thursday, May 19, 2011.

50 cents

Mt Nicholas Field Day

On Sunday the 15th May the St Patricks Head & Esk Valley Historical Society Inc held another successful walk and information day to the old, now abandoned township of Mt Nicholas.



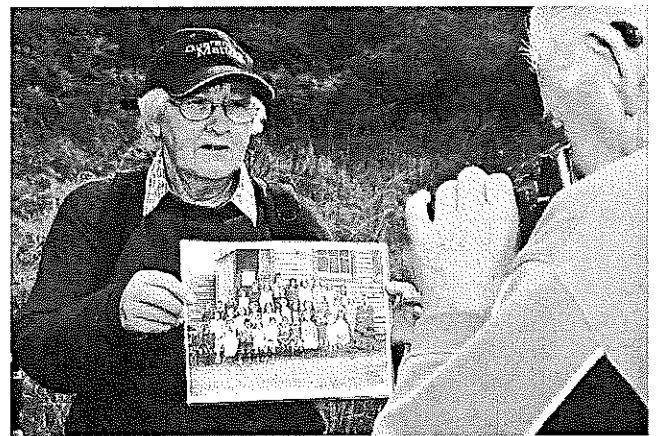
www.fingalvalleyhistory.com

The group of twenty walked into the old rail siding and screens, then followed the ropeway track up the hill to the upper section of the old town. After a photo was passed around of the upper township in its heyday, the group moved on down to the lower section where Ian Bradbury found the old cricket pitch and told the story of playing on it as a young lad.

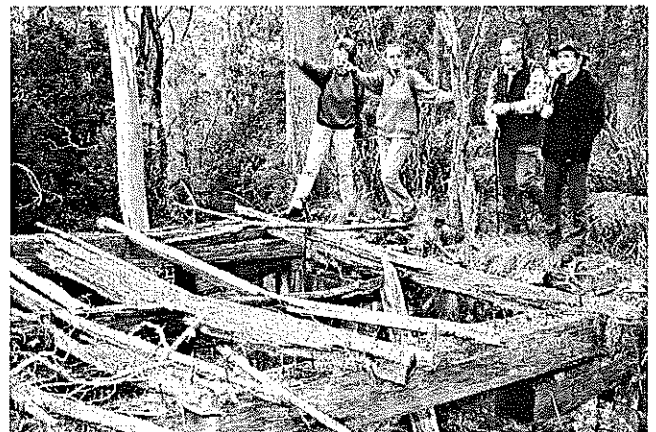
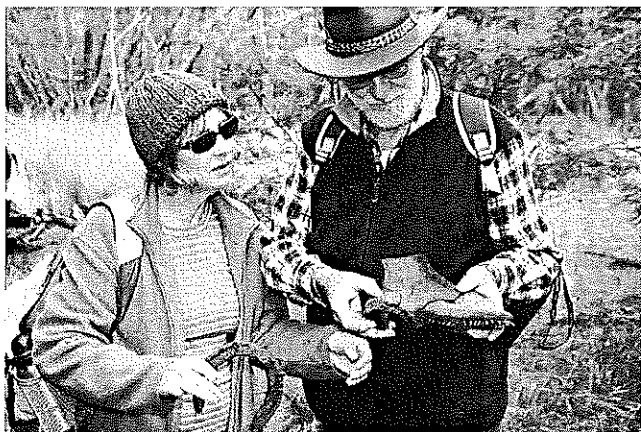
It was then off to the site where the school was situated and everyone enjoyed a good lunch while a photo of the school and the class of 1915 was handed around. After lunch Jim Haas led the group to some of the old house foundations and pointed out where families such as the McGiveron, Birrell, Young, Gleeson, and Greaves once lived.

Everyone agreed that it was sad to see a once thriving community almost completely obscured and forgotten. The worst part is the old town site is now a rubbish dump for some people who care little for their environment or the heritage that lies amongst the crumbling foundations.

Jim Haas.



Photos this page and inside, courtesy Peter Troode.



Please note: Deadline for articles in the next Valley Voice is 5pm Tuesday May 31, 2011

EMAIL ADDRESS: judith.spilsbury@telair.com.au

Community news

St Marys Hospital Auxiliary meets the first Monday of every month at 2pm at the St Marys Community Health Centre.

The Break O'Day Woodcraft Guild Inc. meets for meetings the last Saturday of the month at 2pm at the goods shed behind the St Marys Railway Station.

The Tasmanian Lymphoedema Centre Inc., holds meetings every 3rd Monday of the month at 10 am at the St Marys Community Health Centre, Day Care room.

St Marys Ladies Midweek Tennis 9.30am each wed. Need new players - of any standard-beginners welcome-childminding included - lovely safe place to bring toddlers while you play. **Ring Annette-6372 2224.**

St Marys Playgroup meets each Monday 10.30am - 12 noon at the **Falmouth Community Centre**, during school terms. \$2 a session per child or \$3 per family. Please bring a piece of fruit to share and your child's personal drink bottle. Bikes plus helmets welcome. **Phone or text: Danyelle: 0427 073 100.**

WOMBAT WALK LANDSCAPING GROUP meet every Wednesday 9am to 12 Noon (weather permitting) at St Marys Musical Playground area to plant and maintain the rivulet park and flower bank - anyone interested in joining us - please come along and meet our group. **Contact - Robina 6372 2022.**

St Patricks Head & Esk Valley Historical Society Inc has a meeting one month and a field trip the next. We invite everyone to come along on the third Sunday of the month and enjoy an informative time with lots of fun. For more information Phone: Barry Aulich (637225752) Darlene Wright (63722416) or Jim Haas (63722127)

The Scamander and Beaumaris Community Development Association meets at 7 pm at the Scamander Sports Complex every third Wednesday of the month. New members are most welcome.

The Falmouth Community centre would like to advise members and the community that the new contact for bookings of club facilities is Rachel Woods. Rachel can be contacted on: **03 6372 5118.**

Suncoast Singers meet every Friday at 10am in the Catholic Hall - Cecilia Street St Helens. New singers always welcome.....If you can yawn - you can sing. Phone Mary-Anne Wadsworth 6376 2969.

Break O'Day Regional Arts - General meetings held on the first Wednesday of each month at 5.30pm in the supper room at the back of the St Marys Hall. All welcome. Inquiries to Colin 6372 2707.

Meeting dates for **Friends of St. Helens History Room & Museum for 2011.**

Executive Meeting Dates:

02/05/2011 - 01/08/2011- 07/11/2011

General Meeting Dates:

29/05/2011- 22/08/2011- (AGM) 28/11/2011

Contact the Centre at 6376 1744.

Tasmania Valleys of Adventure

AVOCA • ROYAL GEORGE • FIDDISBURGH • FINGALL • MANGANA • BATHURNA • UPPER ESK • CORNWALL • ST MARYS

GREATER ESK TOURISM

GET TOURISM ... meets the second Monday of each month unless otherwise notified.

WHERE: Fingal Valley Neighbourhood House

TIME: 7PM

All WELCOME.

Enquiries to the president on 63722783.

Ransley's Appliance Service

P O Box 136

Scamander Tas 7215

- Washing machine NOISY?
- Refrigerator runs too LONG?
- Clothes dryer blows cold AIR?



Then you need the service of our technicians.

Ring us on: Scamander: 6372 5307

Mobile: 0428 761 811



BOBCAT HIRE

- * Site cleaning & leveling
- * Excavations
- * Post hole digging
- * Landscape preparation

SAVE HOURS OF HARD WORK.

GIVE MARK A CALL

Ph: 6372 2145.

MANGANA MISSION MUSICIANS JAM NIGHTS

Monthly musicians jam nights will be held at Mangana Mission, 63 Elizabeth Street, Mangana on the 2nd Friday evening every month.

June 10th, Jul. 8th, Aug 12th, Sept. 9th, Oct. 14th, Nov 11th, Dec 9th. Starting time will be 6.00 pm. BYO Meat and drinks for a BBQ. All styles of music, instruments and vocalists are very welcome.

For more information call André or Kate on 6374 2212

St Helens Alcoholics Anonymous (AA) Wednesday 8pm Weekly. St Pauls Anglican Church Hall, St Helens. Murdoch 6376 3335.

St Helens Al-Anon Family Group (Al Anon)

To help families and friends of alcoholics recover from the effects of the living with the problem drinking of someone close. Sunday 2pm weekly.

St Pauls Anglican Church Hall St Helens

Anne or John 6376 4270 or Rose 6376 3335.

St Marys Alcoholics Anonymous (AA) Friday 8pm Weekly. Holy Trinity. Mick & Shir: 6372 2909.

Classifieds in the Valley Voice are free of charge. If your articles are not sold after the first entry, we will repeat the ad in the next issue. Please let us know if items are sold. Every effort will be made to have correct details and phone numbers. However if there is a mistake, it will be corrected in the following issue.

Classifieds

For sale

1984 Nissan 300ZX, targa roof, aircon, new stereo & speakers, sports exhaust, auto V6, 4 wheel discs, mechanically good, goes well, fun car and an eye catcher, just needing tlc. \$3,500. Ph: 0427 404 116.

1100lt petrol tank with pump. In good order. \$300. Ph: 6397 3033.

Wii plus console, hardly used. Wii Fit Plus and board games. Wii sports virtual tennis, world sports party. Extra batteries. \$300 the lot Ph: 0408 039 319.

Budgies, (yellow & green) \$10 each. Pure-bred Barnvelder roosters (well grown) \$20 each. Contact Heather Griffiths Ph: 6372 2421.

Baby seat, 0-4yrs. Good condition. \$50. Ph: 6372 2844.

'99 Hyundai. 180,000kms. New -tyres, brakes, shocks, Island maintenance free battery. \$2,000. ono. Or swap- trade Tandem trailer (10feet) Ph: 0429 676 593.

Custom Sports Spoiler, adjustable. VGC. \$225. ono. Ph: 0429 676 593.

Chef LPG gas stove, 4 burner, grill oven. Excellent condition. \$300. Pot Belly heater with flue. Suit shed. \$50. Ph: 6373 2446.

3 large, blue carpet squares. Very good order. \$30 each. White cane bedside table with drawer. Very good. \$20. Ph: 0437 224 892.

Toyota sedan, manual. 1986. \$1,500. Ph: 6372 2090.

4 tyres and rims, suit 4wd. \$100 the lot. Wooden single bed and mattress as new. \$100 the lot. Must Sell. Ph: 6372 2164 A/H.

1993 Toyota Corolla sedan. No rego. Good cheap car, goes well. \$1,800. Ph: 6372 5045.

Silver pipeline single bunk beds. 12 months old (as new) top bunk never used! Brought for \$400 new, Sell \$200. ono. Mattresses not included. Ph: 0408 174 193.

Sunbeam Cafe series Coffee machine. little use. \$100. Trailer 6 x 4. As new. Reg. to Aug. 2011. \$500. Ph: Elaine: 6372 2201.

Dishwasher. D'Amani Model DAD-6001W unused. Electric Single Oven. D'Amani Model DOFF6.2SS 60cm. 4 Burner Hotplate. D'Amani Price \$1000. will separate. Pureheat Model ROYAL 3450 Series Heatpump heater \$300. Water Cooler Electric Home-maker \$50. All in excellent condition. PH: 6372 5527.

1 x white enamel bath. \$50. ono. 1 x white shower base. \$30. 1 x white vanity unit. \$40. 1 x sofa bed (reasonable) \$30. 1 x washing machine. \$50. 1 x 51cm flat screen TV (analogue) \$45. 1 x Lexmark printer. \$15. 3 x lots grey carpet. \$50. 1 x teak buffet. \$50. ono. Plus other small items. Ph: 6372 2481.

Sofa bed. Near new. \$400. ono. Ph: 63741033.

Infiniti Elliptical cross trainer. Excellent condition (like new) \$550. Ph: 6372 2552.

Cane (oval) glass topped table with two padded chairs \$120.00. 3 rolls 2" Irrigation pipe (black/green stripe) 600 metres total. \$400.00ea. Pine, two drawer student desk \$50.00. Diamond Doves. \$10.00 ea, cheaper if multiple buys. contact Noelene 0363 722 884.

FOR LEASE

IN SCAMANDER
MODERN COMMERCIAL KITCHEN AND
LICENCED 40 + SEAT RESTAURANT.
PH: 0403 155 649

TO LET

STUDIO AND ONE BEDROOM APARTMENTS
IN SCAMANDER.
REASONABLE RENTAL,
INCLUDES ELECTRICITY.
PH: 0403 155 649

FOR RENT

BEAUMARIS
1BR FLAT, SELF CONTAINED, READY NOW.
\$150 PER WEEK, INCLUDING POWER. NO PETS.
Ph: 6372 5045.

Flat mate required to share fully-furnished modern beachside residence in Scamander \$110.00 per week (power included) Semi-professional preferred, non-smoker. No pets. Ph. 0432 313 761.

Wanted to buy

Chooks
Barnevelder, Plymouth Rocks and Black Leghorns.
Ducks, all different varieties
PH: Garry 0417 331 536.

FOR SALE

2 bookcases--1 oak, 1 pine (\$80/\$50)
1 lady's bike 12 speed g.o. \$50
1 piano stool (re-covered) \$90
1 2nd-hand office swivel chair \$30
Don or Susanne Ives
6372 5130 - 0417 543 745

Frozen blueberries - \$11 kilo Phone 6372 2341.

Portable milling available. Ph: 0427 715 577.

"Moo-Poo". Finely screened. Any quantity. See Norm. Ph: 6372 2380.

Garden mulch. Large square bales of straw.
Free delivery in St Marys area.
Ph: Mark or Alana: 63722145.

Small square bales of garden mulch \$5.
Small bales of grass & clover hay. \$5. (undercover)
Garden mulch, in big round bales. (wheat straw, weed free) \$60 a bale, delivered free in St Marys area.
Ph: 0407 944 158.
Tractor slashing available. Ph: 0407 944 158.

THE STATION

The St Patricks Head & Esk Valley Historical Society Inc. applauds the Break O'Day Council for their purchase of the old St Marys Railway Station. We believe it is important to preserve the history of our State and this building is most certainly an important part of the development of not only St Marys, but the northern section of the East Coast.

For almost a hundred years the bulk of the freight coming and going from the Fingal Valley and the coastal region from Bicheno to St Helens was carried by rail.

In the early days, horse drawn drays would labour up the Passes from the

coast to bring or collect goods from the St Marys Station. As time went by, of course, the horse was replaced with the motor lorry. The Station was the hub of the town, particularly in the mornings after the night and early morning trains had arrived with their goods.

The St Marys Station was also the starting or finishing point for the many passengers travelling in those days. As a young lad in the 1950s the highlight of the week was to go to the station on Friday evenings to pick up my brother who was attending High School in Launceston. A special train would bring the school students home on Friday and return them to Launceston on Sunday afternoon.

But that is just one of my favourite memories of the station, I'm sure every person living in St Marys during the train period would have many favourite memories connected to the station. Like the late Noel (Gunner) Bradbury who told me several times of when he was a young lad in the 1920s his father took him to the station to see the circus arrive. You can only imagine the excitement the kids in those days would have felt when they saw the train roll into the station with two huge elephants standing on a carriage and another carriage carrying a cage of lions.

Then there are the stories of dignitaries with their entourage arriving for special events, like the railway opening in 1886, the opening of the first agriculture show in 1893 and the opening of the Dalmyne Coal Mine in 1917. That day people came from as far away as America to witness the then Minister for Mines, Sir Elliot Lewis, open the mine and attend a picnic on Picaninny Beach. The day ended with a banquet at St Marys Hotel that was said to be fit for a King.

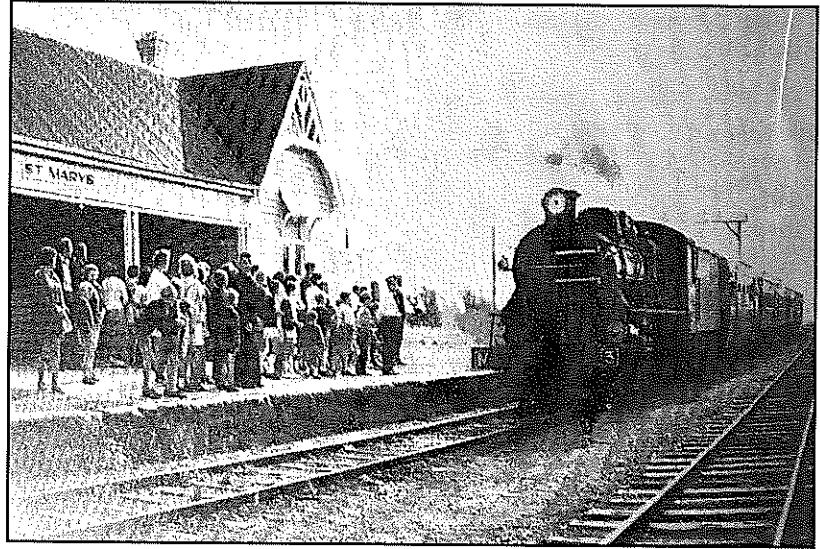
The Station is not a convict built sandstone building, but it is Heritage listed and one of the oldest buildings still remaining in St Marys. Its significance to the district's history is huge, making its preservation, in particular as a community building, a major step forward for the Break O'Day Municipality.

In a letter received by the Society from Mayor Robert Legge he stated that the Council planned to eventually open the building up for community groups, a number of whom have already expressed interest. What a wonderful asset this could be for the town if the entrance had the old station building housing arts and history etc. To add to this if the Cranks and Tinkerers museum could be built near the Woodcraft Guild what an appealing precinct we would have.

The history of the Valley and the automotive industry would complement modern art and some of the latest wood working technology used by the Guild.

One can only hope the community gets behind the Council to ensure continued development and longevity of the rail yard precinct. It has the potential to be a unique attraction that will bring people into the town and give others a reason to stop on the way through, all of which will ultimately have benefits for everyone.

Jim Haas.



The Salvation Army RED SHIELD APPEAL



ning soon.
y collectors
. please.

Ph: Melanie 6372 2099

or Mob: 0409 838 816

Letters to the Editor

Vol. 44 No 2, 2011

Letter to the Editor

St. Marys is a beautiful place. I love the people, the town, the landscape, the vision and hard work of individuals, organisations and businesses. Ian and I have invested much time, energy and cash into coming here and being involved as community members, professionals and business people because *we believe in the potential of St. Marys and the surrounding area.*

However, I am very concerned about the negative information and misconceptions that are currently circulating, specifically about the St. Marys Railway Station, the Cranks and Tinkerers Museum proposal and the Woodcraft Guild.

May I respectfully recommend that we consider the following points:

1. We will achieve much more if we work *together* as a community, rather than being divisive and critical.
2. The more activities and options that are available to visitors, the more they will be encouraged to come; this benefits the locals also, as visitors usually spread their dollars around the community while they are here.
3. Issues are more likely to be resolved if we discuss our concerns in a sensible and mature manner directly with the people involved..
4. It should be a priority for us all to find out the truth of a situation *before* reacting to rumour and/or gossip.
5. Making personal comments about community members causes wounds which can take a long time to heal.
6. Enthusiasm and a positive attitude are infectious, *but so is negativity.*

To conclude - I am more than willing to expand on what I've written above, but I would prefer it to be in the form of an amicable and friendly discussion, *face to face.*

Anyone is welcome to drop in to the gallery and have a cuppa and a chat. I am not interested in negativity - it stresses me out too much! Any takers?

Rita Summers.

HARRIS FUNERALS

Lindsay & Diane

(D. Bailey & son) A.F.D.A

Ph/Fax: 6376 1153 Mob: 0418 133 420

Office & Residence:

114 Cecilia St
St Helens

Chapel:

46 Tully Street
St Helens

**We are here when you need us
to arrange Burial or Cremation.**

Pre-paid and pre-arranged funeral plans are available.



An old Irish farmer's dog goes missing and he's inconsolable. His wife says, "Why don't you put an advert in the paper?" He does, but two weeks later the dog is still missing. "What did you put in the paper?" his wife asks. "Here boy," he replies.

Graham Lynch

Graham or Muscles (Mus) as we all knew him passed away recently in Launceston, where he had lived for the past five or six years.

When I first started work at the Hydro, Mus was already working there. During my thirty two years there I can say that he was one of the most honest, hard working men on the job. Nothing too much for him. He was always willing to stand by for someone else on callout duty if needed.

We were known to have a few frothies at times, especially at the Christmas break-up.

Graham joined the St Marys Pacing Club Committee in 1986. Here too, he was a very conscientious worker, often starting before time at any working bees. He was made a Life Member in 2003. He also received a Meritorious Service Award from Harness Racing Tasmania, for services to Pacing. These awards are not handed out unless well deserved.

R.I.P. old mate.

Eric Bean.

THANK YOU

To everyone who sent cards and messages, plus all who passed on their thoughts and prayers by various mediums while I was in Melbourne having surgery, THANK YOU!!

You all helped pull me through a hard, lonely time - it was a big incentive to get home knowing there are so many people who care!

I am slowly getting better but it is a long process so I wont be doing a great deal, plus its darn cold out there!

Also a big, big thanks to all the volunteers who are keeping the op shop going, your hard work is much appreciated.

Tracy McDonald.

Rae & Partners

Lawyers Barristers & Solicitors

113 Cimitiere St Launceston

Visiting :

St Marys Community Health Centre

Alternate Tuesdays : 9 am – 10 am

Ph: 6337 5555 For appointments.

Walk on the Wild Side

Sunday 5th June

Rare Species Walk & Talk: South Sister

Lead by: Ashley Mason

Start: 10 am – 1 pm

Meet: second right turn off, up the South Sister road.

Bring: your lunch, drinks & walking boots:

Available @ 1pm: BBQ facilities, coffee, tea and cake: – Gold coin donation.

Contact: Save Our sister:

Bung: 0447 151 871 or Ashley: 6372 2334.



Sunday Market

Happening :

At the Old Tasmanian Hotel

On the last Sunday of the Month

Starting on Sunday 29th May, 9am – 1pm

Please ph 63742344 or mobile 0488 562 538

to book your table/trestle

Needed: fruit & veggie stall holders



East Coast Visitor Information Network Winter Opening Hours

The Bicheno and Triabunna Visitor Information Centres have instigated winter hours for business.

This means these two centres are open 10.00am to 4.00pm seven days a week from the first of May until the end of September, and may be closed for lunch between 12.30 to 1.30pm.

At this stage the St Helens Visitor Information Centre is open from 9.00am to 5.00pm seven days a week. Any changes to this will be advertised.

If you have any questions, please don't hesitate to contact Jo-Anne O'Brien, Manager Tourism Services on 0418 523 275.

Beautiful Crystal Healing

Necklaces for sale.

Custom made. \$40

Phone Rose and let her know of your health needs.

Ph: 6374 2265

FREE RANGE CHOOKS???

1 ROOSTER, 1 HEN AND 5 HALF GROWN CHICKENS. This family of poultry are wandering 'FREE RANGE' around Cameron St and Gardiners Creek Road, doing a lot of happy scratching in several proud gardeners flower and vegetable patches.

Does someone own them? If not, does someone want to collect them?

It would make the residents of this area much happier gardeners.

For Your entertainment' - a concert of Singing and Music presented by the St Helens Suncoast Singers on Sunday afternoon May 29th at 1.30pm - Tidal Waters St Helens.

Also appearing are the Chocolate Shop Singers of St Mary's - Joe Porter on Pipes - Ukuleles Unleashed - Simple Harmony - Don Ives and Co. Jazz Band - all this and a few surprises for \$10...with proceeds going to the Riding For the Disabled ...

The afternoon promises to be a varied afternoon for all to enjoy...Lucky Door prize and Raffle...

For more information please contact Mary-Anne Wadsworth 6376 2969.

Jazz Club News.

On Saturday 18th June the St Helens Jazz Club is presenting a Mid Winter Mini Jazz Blow - with musicians from Tasmania and the Mainland appearing... with favourites like Paul Martin, Allan Brown, Neil Heather, Elvin King. Matthew Ives Quartet as well as our very own Jazz Band to name a few - makes this a not to be missed musical event...starting with a Jam session on Saturday morning with all musicians mixing and matching and having a ball at the New Jazz Club rooms, 68b Cecilia Street St Helens, (behind Billie T) from 10-12midday... followed by a concert to be held in the R.S.L. Rooms in Quail Street St Helens...1pm - 4pm...the morning session is free, but the concert has an entry charge of \$10...

After the St Helens Top Pub burnt down a few years ago, the Jazz Club has been trying to find another home - now it has come to fruition with brand new Club Rooms behind Billie T in Cecilia Street.....come and see the new rooms and enjoy the wonderful music that these very talented musicians will be presenting for your pleasure.

SPLASHY

ST MARYS

You swill it, we fill it!

You dump it, we pump it!

Water cartage

Septic pumping

Contact: Mick

0488 777713

Out of the Woodwork

Wendy Brennan, Secretary 0408 065 6014.

Many thanks to **Michael Neighbour** who drove several members to Agfest. It was an enjoyable day. Some members snapped up some real bargains in tools, work wear and clothes. I personally always gravitate towards the glass blowing, jewellery design and animals. The working cattle dogs are testament to the effective loving bond between themselves and their owners. One owner told me that as soon as the collar comes off his furry mate becomes part of the family. The day was made more enjoyable by the company of Mr and Mrs Targett who also shared the bus travel with us. The Old Machinery Club of Tasmania had their engineering marvels doing working displays. Hence the photo of our local lad **Jeff Springer**. (pictured right)

The Guild would like to express it's gratitude to **Wendy French** for her educational and informative outreach program **StandBy**. It is excellent workshops like this that provide small communities with the knowledge and tools to be effective in offering help and comfort to people left in tragic circumstances from the intentional loss of a loved one.

Our member **Wendy Fowler** (yes another Wendy!) designed a clever pamphlet which was distributed to guests at the workshop to inform attendees of what our club has to offer. And hopefully networking and reaching new members, especially isolated members of the community, both men and women, who may be in need of social interaction.

A handy tip from the girls: If you accidentally spill foundation makeup onto cotton fabric. Use a mixture of half and half methylated spirits and dishwashing detergent. (I teaspoon of each is sufficient to do an area of 30cm in diameter) Rub the mixture into the stain until it feels like jelly, then wash and dry as normal. It works!



The Guild meets on the last Saturday of every month at 2pm in the old railway goods shed St Marys. New members always welcome. We are open Monday, Wednesday and Friday. Other times by appointment.

A supportive environment where traditional woodcraft skills are taught

Photo of Geoff Springer with one of his machinery marvels was taken by Wendy Brennan at Agfest Group photo taken at Agfest by George Cresswell.



BREAK O'DAY REGIONAL ARTS

Wishes to announce its newly established Art Competition.

Our 2011 theme is "Winter Dreaming".

All winners will be announced at 8pm on 25th June 2011, at "The Winter Dreaming Bush Dance" in the St Marys Town Hall.

All mediums of art are eligible for entry.

Awards and Divisions –

1. Under 11 yrs: entry fee \$2 - award \$50 plus certificate of achievement
2. 12 yrs to 16yrs: entry fee \$2 - award \$50 plus certificate of achievement
3. Adult: entry fee \$25 - award \$1,000 plus certificate of achievement

All divisions will also have a highly recommended certificate.

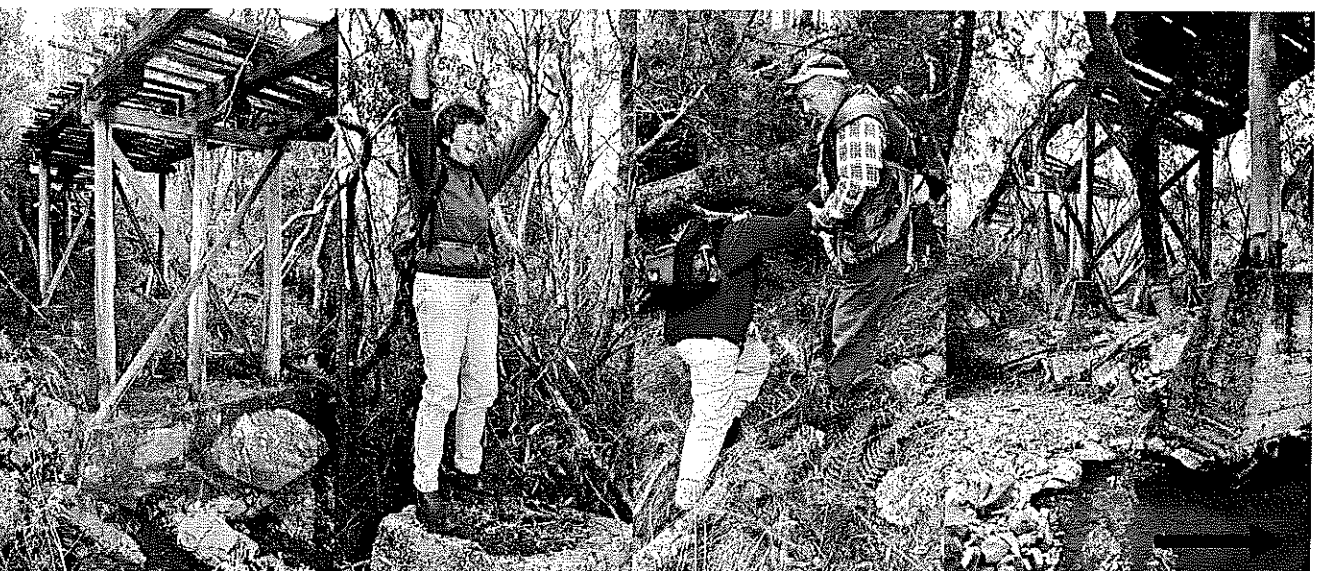
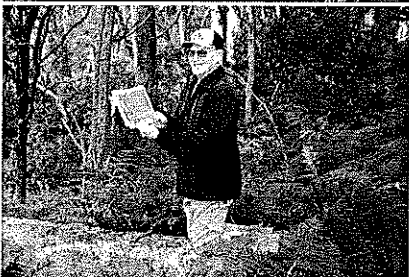
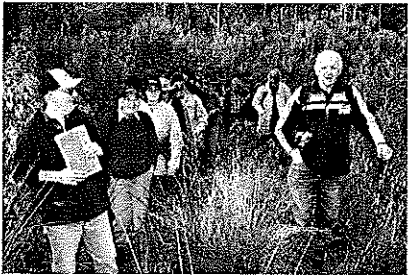
All entries must be accompanied by entry form and entry fees to
Manna Farm, 45 Main Rd, St. Marys. Tasmania 7215

Closing date – Monday 20th June, 2011 @ 5pm.

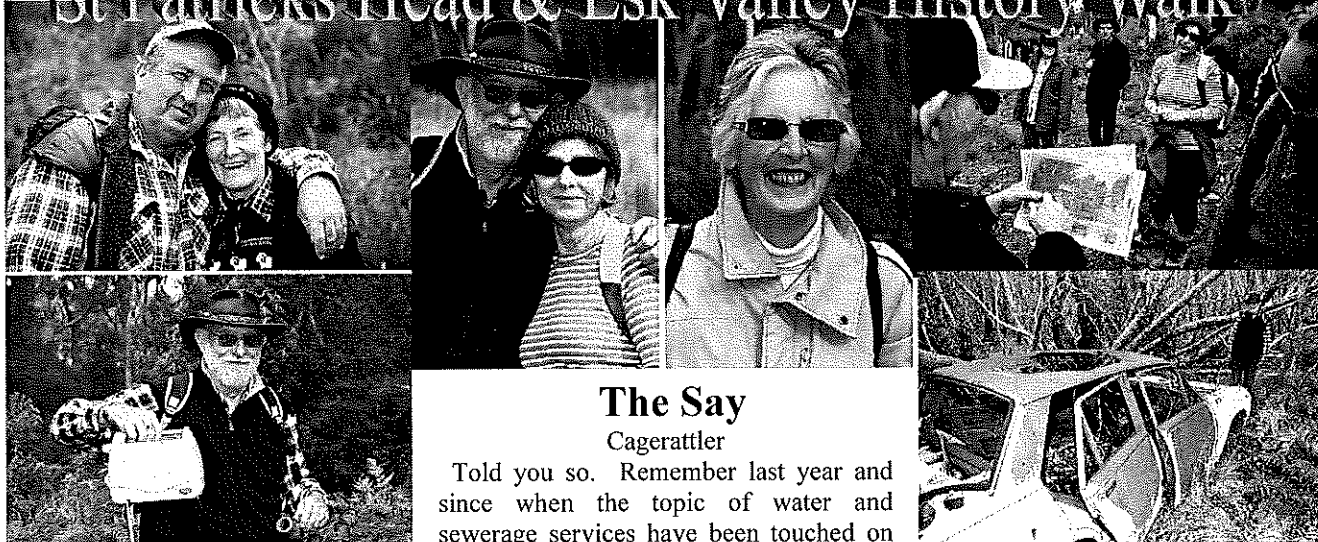
Forms can be collected from Purple Possum and the Post Office, St. Marys or The Suncoast Art and Craft Gallery, St. Helens or download a copy from

www.mannafarm.com.au/arts.pdf

St Patricks Head & Esk Valley History Walk



St Patricks Head & Esk Valley History Walk



The Say

Cagerattler

Told you so. Remember last year and since when the topic of water and sewerage services have been touched on here? I think it was commented that to

many of us the new arrangements were less than ideal, to put it kindly. I personally had grave fears for where we were heading. I was right.

Did you see this past week or so where Councils met in Launceston to meet with water corporation and government officials trying to head off an average \$200 price hike to consumers next year? TWO HUNDRED DOLLAR INCREASE THAT IS...

That is totally and completely ridiculous if it is to occur. In no other body or company would such a rise in charges be permitted. If it was, regulators would be mighty interested you would think. Imagine if that rate of increase resulted in power or telephone charges.

Apparently the State Government set a 5% price cap on the initial agreement with the three water/sewerage corporations, which will now run out. What then does this mean for us as time goes on, particularly when the water corporations are expected to run at a profit? With all this going on at present I expect that most likely a \$200 rise next year won't occur but of course there will still be a substantial rise above the initial five percent. In the news they also talked about holding back or cancelling infrastructure works to offset all this.

I wonder what all the figures showed some years back before water and sewerage was handed over to the new bodies from local councils. It might make interesting reading.

Just one suggestion though to the General Managers of our three bodies around the State. Come clean and tell us what's in the long term forward planning and how it will affect us all. If we had a pretty fair idea, you never know, we might be a bit more accommodating to future rises if we know where our money is going and hopefully earlier reports that it may be impractical for up to 16 communities to see much improvement for quite a while. Hopefully that is wrong.

Just imagine if you were expected to keep contributing increasingly to the revenue of your associated water corporation without really seeing much done for a while. As they say "Not happy Jan". Let's see a bit of honesty as time goes on.

I've come to the conclusion that most of our politicians need to take a long hard look at why they decide to go into the game. With one or two exceptions I am convinced that despite (maybe) having the very best intentions initially, most get sucked into the system and we finish up with what we get. We get so blasé with them and just put up with their fits and fancies way too often, I'm afraid. Sad isn't it?

It's good to see that the back road is holding up pretty well to and from the coast with up to another 4-5 weeks before the Pass re-opens. Just a favour though to the goose in the white Toyota. SLOW DOWN A BIT MATE. It isn't a race track and just because you probably know the road well doesn't mean the rest of us need 'showering with stones' every time we meet you. Thanks. Perhaps a speed limit of 70kph needs to be imposed on this road. That's plenty fast enough...

What do you think ?

Scamander Beach Surf Shop

6 Lagoon Esplanade
Scamander

Ph: 6372 5529

Bathers Wetsuits DVDs
Clothing Footwear
Bodyboards

Surfboards:

Milch McTavish
Surftech Bic G Boards

Bay Surf Shop

2 Pendrigh Place
St Helens

Ph: 6376 1755

ST MARYS SPORTS CENTRE INC

TRIVIA NIGHT

When: Saturday 4th June, 2011

Time: 7.00 for 7.30 start

Where: St Marys Sports Centre

**Entries are to be for tables of 6
at a cost of \$60.00 per team
(which is to be paid when booking)**

So for a great night with a few drinks and a few
laughs shared amongst friends get your team in
now by contacting:

Chris Davern on 6372 2190 or Jim Turner on 6372 2441

GREAT PRIZES TO BE WON



Congratulations
Betty Dawson.
The winner of the 2nd
winter wood raffle.

St. Marys Markets on Saturday June 4th will celebrate the arrival of winter. Enter our best home made winter hat competition—\$25 for winning entry -\$2 entry fee per hat— entries to be in by 10am— the winner announced at 11.30am.

Join in Maggie's Open Corner— Read poetry, share your musical talents or craft skills, no cost involved, just your time.

The St Marys School Band will be on stage at midday. Don't miss hearing these talented musicians.

The perfect venue for community groups to share information or raise funds. New stall holders always welcome. **Phone Colin 6372 2707.**

Vortex Healing Centre

Marguerite McWatters' Healing Tones workshop was a great success, we all learnt a lot and I am sure we are practicing! A special thank you to Marguerite for sharing her wisdom and beautiful voice!

Coming up at the Vortex Healing Centre

On Saturday 21st May we have a special meditation for men. It is called the Diamond Alignment meditation. \$5 donation.

28th & 29th May ~ Qi Gong workshop with Barbara Longue, check website www.vortexhealingcentre.com for details.

3rd, 4th, & 5th June ~ 3 day Silent meditation~ with Barbara Longue, Getting deep and clearing old patterns.

8th June 7.30 pm ~ Discussion night ~ What's up on planet Earth ~ Gold coin donation

Keep checking the website

www.vortexhealingcentre.com/calender of events for all the latest activities

IF ONE SYNCHRONIZED SWIMMER DROWNS, DO THE REST DROWN TOO?

WHERE DO FOREST RANGERS GO TO "GET AWAY FROM IT ALL?"

For super-tasting soups, bowl in to Purple Possum!

With winter on the doorstep we're heating up our menu with tasty soups including Leek & Lima Bean, Adzuki, and Lentil – and some new recipes we've created. All served with a crunchy roll in our warm and welcoming café!

Making soup at home? Then use our Super Soup Mix – or create your own from our wide range of beans, grains and lentils!

Purple Possum

Wholefoods & Café

5 Story Street St Marys. Phone 6372 2655.

ETHICAL SUPER

Time to make the change?

Speak to the ethical investing specialists



Tas Ethical
6234 6336
www.tasethical.com.au

Tas Ethical Pty Ltd is an Authorised Representative of Financial Wisdom Ltd ABN 70 006 646 108 AFSL 231138

Ukuleles Unleashed

Alan & Isobel Telford, ran Sing & Play Ukulele classes in St Marys for the Anglican Parish of Break O'Day earlier this year. (Hope you all knew they were happening?) Just two weeks before Easter, they finally managed to sort out a date with the Launceston Ukulele Club for a Ukulele Jam at St Helens. We had a BBQ lunch using the excellent Lions Club facilities at the picnic area at St Helens Point Road, and then moved on to the Anglican Hall in Cecelia Street. Forty people attended including new young players from St Marys. Zac, Corey, Chloe and Courtney have been coming to play regularly and are great kids who enjoy music. They are inspirational young kids who need lots of local support to nurture their skills and talent. The St Marys group is continuing and anyone interested should contact Barbara McAllister for details.

Background info: **Ukulele Sing & Play Workshops began in August 2010** as a project of the Break O'Day Anglican Parish in St Helens. We now have an active and committed group of 12-14 people – men and women. We have been running the workshops and in February 2011 attended the Inspirational Melbourne Ukulele Festival. Groups around Australia are doing lots of interesting stuff and we want to encourage as many people of all ages to join us at St Helens. We've also run classes at St Marys for the parish and are currently tutors for Sing & Play Ukulele classes for the Launceston School for Seniors. **Contact:** Isabel or Alan at 6354 1021

Check the new exciting evening venue with stage plus amplification for the 'wired' players.

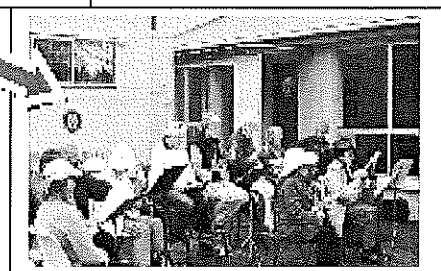
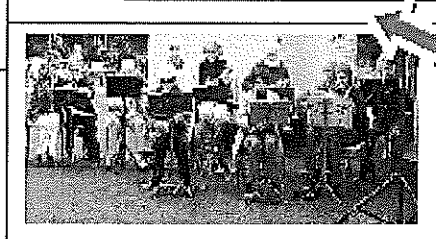
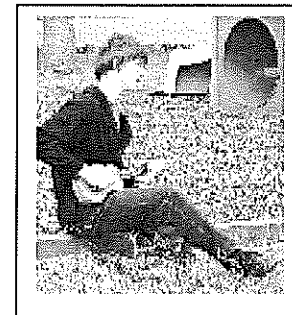
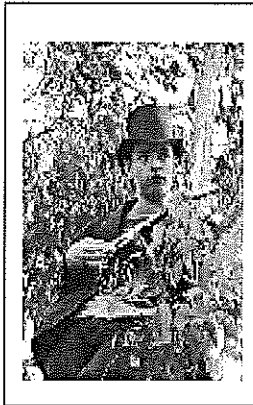
SEE YOU TUESDAY MAY 31 @ CROSSROADS

THEN ... REGULAR 1ST TUESDAY MONTHLY UKE JAM 7PM START TIME

AT CROSSROADS WINE BAR/CAFE SHOP 5 34 QUAIL STREET ST HELENS.

INTERESTING & AFFORDABLE SNACKS AND MEALS PLUS DRINKS AVAILABLE

- § 2010 Seniors week Lunch during October
- § 2010 Blessing of the Fleet on the Jetty
- § 2010 Christmas Shoppers Lunch



Ukes Unleashed from St Helens Jam with ukers from Launceston & St Marys 2011





St. Marys Tigers Football Club Inc.

**AFL MASTERS
DOUBLE HEADER
St Marys Football Ground**

May 29, 2011

ST MARYS

VS

LAUDERDALE

11.30am

LAUNCESTON

VS

TOM MOORE TIGERS

1.00pm

Full range of food/refreshments available
Entry by gold coin donation

Come along and support your local team

*St. Marys Tigers Football Club, P.O. Box 42 St. Marys Tas 7215
Ph. (03) 63 722256
Mob. 0418564710*



Lumina 2011

Lumina, the umbrella campaign promoting events and festivals around Tasmania during winter, starts again on 1 May and runs until the end of August.

Free promotion for your event

Promote your event or festival for free through Tourism Tasmania's online Lumina calendar anytime during the Lumina campaign, by listing in our TigerTOUR database. This also provides your event with instant exposure on our consumer website discovertasmania.com which now has a specific events search category, and upward to the Australian Tourism Data Warehouse, which in turn feeds a number of market-leading travel websites.

How to list or update event details

List your event or update your details on our TigerTOUR database by contacting our event marketing team:

- **Di Byrne:** 03 6230 8145 Diane.Byrne@tourism.tas.gov.au
- **Christie Sweeting:** 03 6230 8225 Christie.Sweeting@tourism.tas.gov.au

Lumina campaign

Following its success within Tasmania last year, Lumina 2011 will focus intrastate to get Tasmanians out and about this winter. Lumina will again have a strong online presence, a social media promotion aspect, television advertisements run in partnership with Southern Cross and radio promotion in partnership with Tasmanian Broadcasters. Australia Post and the Examiner are also partnering the campaign with a direct mailout and newspaper support respectively.

Amazing advertising opportunities

All Tasmanian tourism operators are being offered the opportunity to make the most of Lumina and bookings generated by event-goers. Tourism Tasmania has struck great deals with Tasmanian Broadcasters – allowing participating operators to buy into a schedule of radio advertising – and with Southern Cross for TV advertising.

Hot value TV advertising opportunity

All event organisers are also offered an amazing opportunity to participate in Lumina through a great sponsorship deal provided by Southern Cross. This sponsorship allows you to buy a two week television schedule (90 x 30 second advertisements) throughout the Lumina Campaign period for only \$2,000 and \$500 for production. The schedule is primarily Southern Cross but also includes bonus spots on 7TWO and 7mate.

To be eligible for this offer, advertisements must include reference to Lumina and be broadcast before 31 July 2011. Contact Damon Wise at Southern Cross Television on 6281 7500 for more information.

Radio advertising with Tasmanian Broadcasters To be eligible for this offer your ad should be part of the Lumina campaign and be broadcast before 31 July 2011. Please see the attached advertising proposal for details.

Contact Chris Harry-Jones at Tasmania Broadcasters on 03 6216 1080 or email cjones@tasmanianbroadcasters.com.au

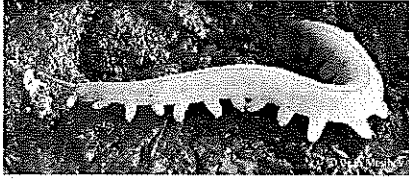
for more information about the radio spots or to book.

Free online promotion features If you are interested in new ways to increase your business profile, such as having a 'Nearby Events and Activities' feature on your website to show what Lumina events are on near your attraction or accommodation venue, or an 'I love Lumina' feature to link with the campaign, contact Rory Mackay on 03 6230 8133.

We will work with you on Facebook content, and a set of twitter hash tags are also available. A QR code (a Quick Response barcode which when photographed by a smart phone with camera application will navigate directly to the Lumina 2011 website) for promotional materials is also available so smart phone users are driven to your Lumina calendar listing. Again, to talk through what might suit you and how to do it, please contact Rory Mackay on 03 6230 8133.

Break O'Day Community Velvet Worm Award 2011

Nominations are now open for the \$1000
2011 Community Velvet Worm Award.



The Award is open to community groups that have made an outstanding contribution toward the protection and enhancement of Municipality's natural environments and resources.

Nominations must be received at the Council office
by 5pm on Friday 8 July 2011.

You can obtain the Award Guidelines and
Nomination Form from Council's website or office.

www.bodc.tas.gov.au admin@bodc.tas.gov.au
Ph.63767900



Official Order PO9368

ST MARYS SPORTS CENTRE INC.

Like to spend some quality leisure time?
Like to try some new sports or come back to them again?
Like to have a go at other activities in a great atmosphere?

Like to enjoy a very social, friendly time with
a great group of people?

If you answered "yes" to any of these questions
well have we got the place for you?

Talk to any of us at the St Marys Sports Centre,
Gray Road St Marys.

WE'D LOVE TO HEAR FROM YOU.

Sad but true.. We have this fantastic golf, bowls, indoor
bowls, cards, social club, right here in St Marys but it
seems not too many people know about us these days.
Thanks to a loyal and reliable band of keen volunteers,
terrific recent support from Council and fellow local clubs
we are really showing how valuable clubs like ours
are to the Community. We really are.

WE HAVE A LOT TO LOOK FORWARD TO AND A LOT TO OFFER TO PROSPECTIVE NEW MEMBERS

The number one thing, and undoubtedly the most im-
portant aspect of the club, is members,
and we'd love you to think about giving us a ring or just
popping in to say "g'day" and have a look around to see
if you like what you see.

We think you will... You won't be disappointed.

If you'd like more information ring the club on 6372 2177,
Jim Turner (President) 6372 2441, Rod McGiveron
6372 2215 or any committee person you might know
or drop us a line at :

PO Box 31 St Marys Tas 7215...

Or email: stmarysgolfclub@bigpond.com

Exhibition Opening

The latest exhibition to be presented by Break O'Day
Regional Arts is now on at e.Scape. About 15 people
attended the opening of *Suspended Animation*, by north
west artist Michael Cannon, on Saturday 7th May.

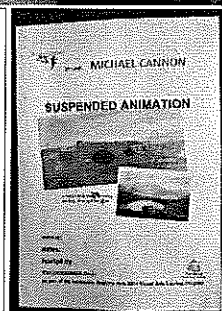
His work is a blend of photography, drawing, painting and
digital art. Drop in for an opportunity to see some truly
inspiring and beautiful art. On show until the end of the
month.

Photos & article - Leissa Dane.



The St Marys Op shop
is looking for
volunteers, able to
commit to one day a
week. Please contact
Janet to discuss further.

6372 2851.





**You can rent
everything in our
store:
Except Emma**

There's nothing like getting your hands on brand new appliances from across our entire entertainment, IT, communication, home and lifestyle range. And when you're on a rental plan from Betta Electrical, you can upgrade all of your appliances to the latest technology after 18 months and pay no penalty. Just ask Glenn.

in Rent

Lets you have it now!

Gazzman's

You're better off with

**Betta
ELECTRICAL**

* Terms and Conditions apply, see in store for details. Based on 12, 24 and 36 month contracts. Rental is provided by 'inRent'. 'inRent' is a registered trademark of Walker Storage Pty Ltd (WSP) ABN 77 371 685 846.

DESIGNER HAIR STUDIO

46 Main St St Marys Ph: 6372 2108

NOW OPEN FIVE DAYS A WEEK

SPECIALS FOR MAY

Ladies restyle -\$35.

6 free foils with all colour services
(excl Wed)

"CHEAP TUESDAY"

All trims at pensioner prices

"WACKY WEDNESDAY"

\$5 OFF ALL COLOUR SERVICES.

ALL HAIR PRODUCTS A LOW \$17.95

Salon hours: Monday: 10.30am -5pm
Tuesday/Wednesday: 9.30 - 5.30
Thursday/ Friday 9.30 till late. (App only)



St Marys Market

Rain hail or shine the markets will be held on the 1st Saturday every month in the community hall 9am till 2pm.

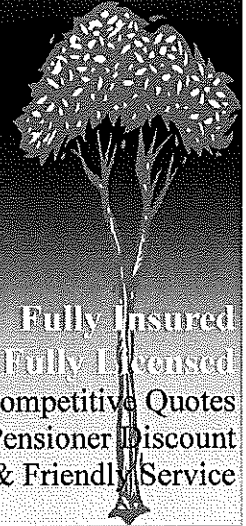
New stall holders welcome

Phone Colin 6372 2707 or Sue 6372 2512

CLEAN CUT GARDENING



- Gardening
- Landscaping
- Tree Lopping
- Tree Removal
- Firewood Supplies
- Plus much more....



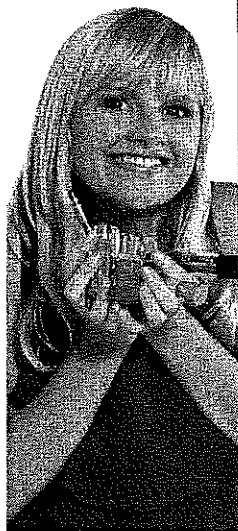
Call
Andrew
today on
0419 11 38 36
or 63 722 366

Fully Insured
Fully Licensed
Free Competitive Quotes
Senior Pensioner Discount
Reliable & Friendly Service

St Marys Police Phone Number 6372 1010
Non Urgent Number 131 444
Urgent and Life threatening 000
SES (Flood & storm only) 132 500
Fire 000



St Marys
PHARMACY
Ph: 6372 2844



"I SAVED
MONEY WITH
DESIGNER
BRANDS!"



Kodak quality
prints in seconds

DB DESIGNER BRANDS
DESIGNER QUALITY - INCREDIBLE PRICES
•VIP CARD•

St Marys Pharmacy is now stocking
Designer Brand
make-up.

Call in and get your **Loyalty Card**, which entitles you to buy 6 products, get your card stamped and get the **7th product FREE.**

Purchase 3 products at the same time and receive a **FREE Pen.**

Purchase 2 products at the same time and receive a **FREE Lipgloss.**

You also get a **FREE Mascara** when you purchase a foundation.

Prices start at a low \$4.99.

Dick Adams MP

Federal Member for Lyons

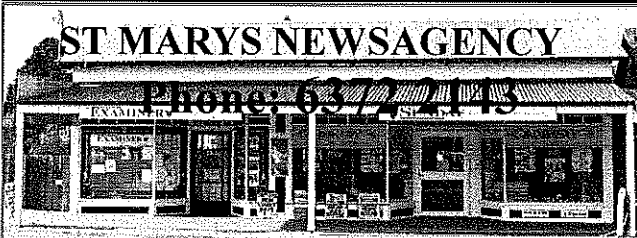
Please contact one of my offices if I can be of any assistance
 53B Main Road 58A High Street
 PO Box 50 PO Box 271
 Perth, Tas 7300 New Norfolk Tas 7140
 Ph 6398 1115 Ph 6261 3366

Toll free 1300 132 689
 Email D.Adams.MP@aph.gov.au



**WORKING WITH YOU FOR A
 STRONG COMMUNITY**

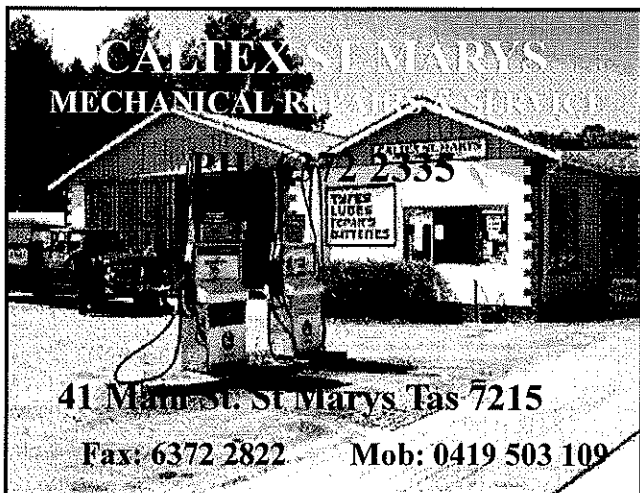
Written and Authorised by Dick Adams, 53B Main Road Perth



Open 7 days a week for your convenience.
 6am - 7pm Mon. to Fri. 7am - 6pm Sat. & Sun.

CALOWS BUS DEPOT	AURORA PAYG
PRE-PAID MOBILES	PHONE CARDS
DVDs	FISHING GEAR - ICE

Lots of
NEW DVDs.
VIDEO SALE
→ 2 for \$5. ←
BARGAIN.



41 Main St. St Marys Tas 7215

Fax: 6372 2822 Mob: 0419 503 109

Big Shed has a new **guitar teacher** with 3 years teaching experience. Book now for your weekly lesson. All abilities welcome.

Weds 4.30-6 New time with John McColl
Garden sculptures - John will assist you with your individual project. High school students welcome. No Experience needed. \$20 Concessions Available.

1st **Wed** of every month 5-6.30
Life Drawing (Model and materials provided. No tuition) \$12 No bookings required

Local artist Zeb Walker is currently on site creating his amazing yurts

Big Shed has a recording studio, PA hire and experienced engineers.

Big Shed has art space for hire, as well as a network of artists available for commissioned artworks.

24B37 Tasman Highway, St Helens.
 Phone **0428725228**
Bigshedstudios@yahoo.com

BIG SHED STUDIOS



St Helens Flowers

Donna of St Helens Flowers takes all the fuss out of ordering flowers.

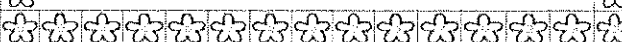
Arrangements, Bouquets, Gift Baskets, Wedding Flowers, Floral Tributes

Member of the Petals network—we can now send or receive flowers worldwide!

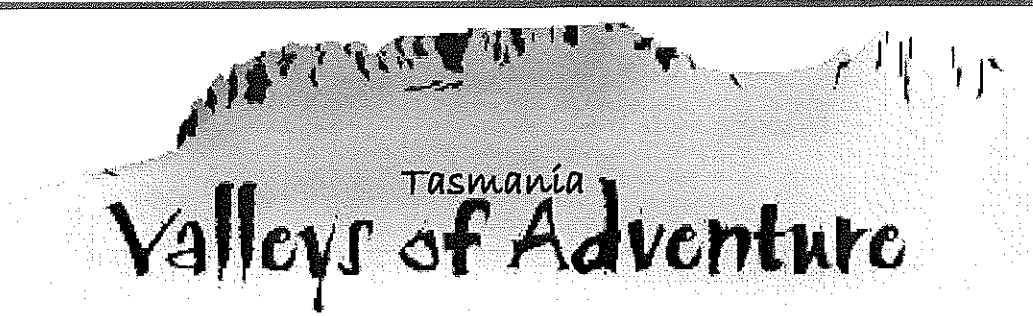
Fantastic Fresh Flowers delivered to your door or statewide

Ph Donna - 6376 1211

Fun Range of Helium Balloons!



Remedial Massage and Naturopathy
 ring Sue Christiansen for an appointment.
 0418 515 419

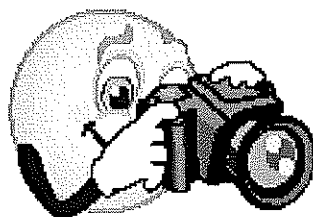


Tasmania
Valleys of Adventure

GREATER ESK TOURISM INC ABN: 86 608 256 076

AVOCA • ROYAL GEORGE • ROSSARDEN • FINGAL • MANGANA • MATHINNA • UPPER ESK • CORNWALL • ST MARYS

**GREATER ESK TOURISM INC IS EXCITED TO BE RUNNING ANOTHER
PHOTO COMPETITION**



You are invited to enter your photographs that showcase

Adventure within the Valley

Finalists in the competition will be notified by phone or e-mail and will have their photos printed for judging and placed at the Purple Passum, St Marys for display.

Entries will be judged by Owen Hughes – Tasmania's award winning Master Photographer and the Fellow of Australian Institute of Professional Photography.

For further information, please visit our website www.valleysofadventure.com.au and click on the 2011 Photo Competition link. You can also download a copy of the entry form as well from the website. Terms and Conditions can be found here too.

CLOSING DATE HAS BEEN EXTENDED

Competition is open from 1st February 2011 to 31st May 2011 at 5pm. No late entries will be accepted.

VALLEYS OF ADVENTURE - PHOTO COMPETITION

Send us your competition entry. Entries must include:

Entries must be posted and include the completed entry form below, a \$5 entry fee, the digital image/s on a CD and a 6"x4" print of each image. The \$5 entry fee is for up to 6 entries (the more photos you enter, the better the value). The digital image/s, which must be named to correspond with the Title/s on your entry form, may be sent by e-mail in lieu of sending a CD. The 6"x4" prints must display the Title on the back of the print and the name of the photographer.

Entry forms are available from our website: www.valleysofadventure.com.au
click on the 2011 Photo Competition Link and download the current entry form.

'Adventure within the Valley' can include: outdoor experiences, gourmet indulgence, art fun, Ten Days on the Island Adventures or any exciting event of activity.

Prizes for 2011

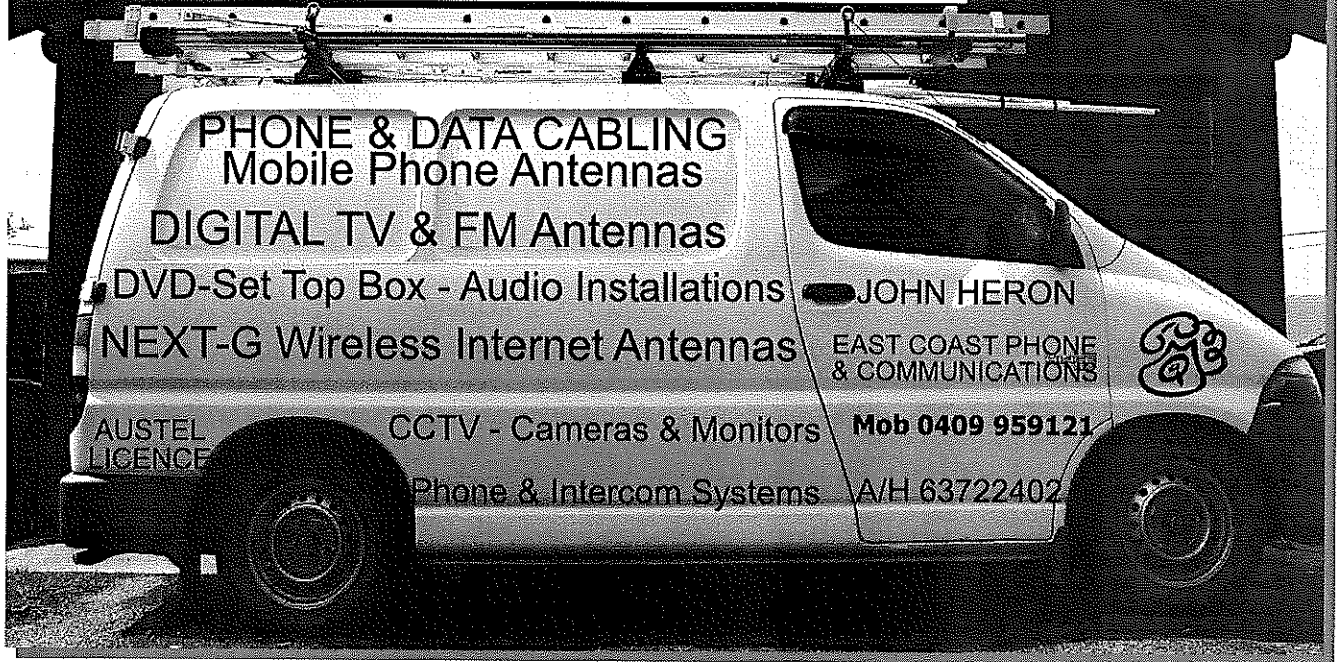
1st Prize: Stretch Canvas Print, donated by Stallards Camera House - Launceston

2nd Prize: \$100 Gift Voucher, donated by Billy Bag Gift Shop - Avoca

People's Choice Award: \$100

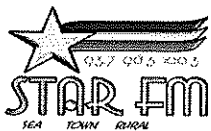
GET YOUR CAMERA OUT AND GET SNAPPING!

EAST COAST PHONE & COMMUNICATIONS



PHONE & DATA CABLING
 Mobile Phone Antennas
 DIGITAL TV & FM Antennas
 DVD-Set Top Box - Audio Installations
 NEXT-G Wireless Internet Antennas
 JOHN HERON
 EAST COAST PHONE & COMMUNICATIONS
 Mob 0409 959121
 AUSTEL LICENCE
 CCTV - Cameras & Monitors
 A/H 63722402
 Phone & Intercom Systems

STAR FM Program Guide



	Mon	Tu	Wed	Th	Fr	Sa	Su
Brekkie	Mad Mondays with "The Mad Hatter"	Brekky with Mary Anne	"Wake up" with Bobster	Bob's Breakie Show	Bobs - Friday Breakfast Show	Evie on Toast And Fishing Show	Sunday's Sunny Side Up with Evie
Morning	RFM On Star FM	Have a Hoot with SKOOT or Marc	Starry Starry Morning The Trace Element	Down under with DJ - BJ	The Silver Fox's Classic 60's Music Mix	Sammy's Sizzling Saturday	
Arvo	In the mood with Mary-Anne	Trace Element's 2 for Tuesday	"Enjoy the Arvo" with Terry Post	Around the world with Tim	Friday round-up with RFM	Brian's Saturday Show	Colin's Mystery Music
Late afternoon	Damo's Drive Show	After School with Neesha and Chloe	Damo's Drive Show	In the back seat with Angela	In the Car with Jackie		Dave's Blues Mix
Eve	Mellow Monday's with Roger Dr Sax with Roger	Neville's Country Corner and more	Mary Anne's Thanks for the Memories	Easy Listening with "Wally"	Marc's Boiler Room Stido's Blast from the Past and Party Mix	Get into the Party Mode with Stido's Party Mix - til late	

The Valley & East Coast Voice Guidelines.

- Opinions in any letters published are not necessarily the views held by the editor and voluntary workers.
- Our pages will remain open to fair and honest criticism, so that on all questions, both sides may be presented, but any letters containing personal attacks or hinting at libel or slander will not be accepted. Stick to the issue rather than making personal attacks.
- Please do not attack the editor, the paper or the authors of previous letters.
- Letter writers will be given the chance to respond over a suitable period of time, but anonymous and/or nom-de-plume letters received as from 11-02-10 will not be published. Subjects may be closed at the editor's discretion.
- Please make sure of your facts. Do not write letters just to let off steam. Letters most commonly published are those that have bearing to current community issues.
- Keep letters short, simple and to the point. Letters are restricted to 300 words or less.
- The Editor reserves the right to edit your letter for grammar, spelling or reduction in size where necessary.
- All letters arriving by post must be signed, including a printed name and also contain your contact details, such as full name, address and phone number.
- All letters sent by email must contain your contact details, such as full name, address and phone number.
- All letters left at drop-off points must have a signature, plus a printed name and also contain your contact details, such as full name, address and phone number.
- Do not be discouraged if your letters don't get published. Whilst each submission is reviewed on its own merits, we generally receive more letters than we have space available.
- The Valley & East Coast Voice reserves the right at all times, without notice, to update, change or amend our guidelines. Whilst we value & welcome community letters, The Valley & East Coast Voice does not provide specific feedback regarding any decision made not to publish a submission.

FRANK GILES

Now agent for N.T.S. (Nutri-Tech solutions)

WORLD LEADER IN SUSTAINABLE AGRICULTURE
"Highlighting the link between the land and our health"

FOR SOIL AND PLANT THERAPY ADVICE

the key to high production fertility
**AND A WIDE RANGE OF
HUMAN HEALTH PRODUCTS-**
high quality mineral supplements.

call Frank on
0419 372 192 or 6372 2341

Stallholders Market Inc.

Is a non profit organisation holding markets every Saturday from 8am in St Helens, at the Library car park. There is a variety of stalls and the fees charged to stall holders is donated to various charities.

For stall booking and other inquiries, please phone Marilyn on 6376 1858.

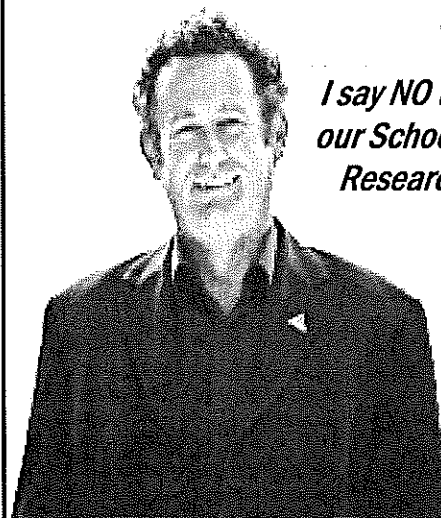
Tim Morris MP

Tasmanian Greens Member for Lyons



Tasmania

*I say NO to selling off
our School Farms and
Research Stations*



New Address: Shop 9, Covehill Shopping
Centre, Bridgewater 7030

Phone: (03) 6263 3801

E-mail: greens@parliament.tas.gov.au

www.tas.greens.org.au

Authorised by Tim Morris MP, Parliament House, Hobart 7000.

Articles for any edition may be left at the St Marys Pharmacy. This also includes items for sale and wanted. Please ensure that your details are included.



St. Helens Electrical

ROD SHAW
LIC: C00489

Domestic, Commercial, Industrial:
*Wiring and Repairs, Rewires,
Underground.*

Home Heating:
*Advisory, Sales & Installation of heat
pumps and fixed heaters.*

Lighting Specialist :
*Interior and exterior, Advise,
Sales and Installation.*

Ph: 6372-5522 Mbl: 0407-615-072

EAST COAST GLASS

Falmouth Ph: 6372 5361

- ▶ Glass repairs
- ▶ Shower screens
- ▶ Wardrobe doors
- ▶ Double glazing
- ▶ Aluminium windows
- ▶ Security doors



Locally owned and servicing
the East Coast.

Call David and Anne Cannon
for prompt and reliable service.

Yanni's

Café / Laundromat / Catering

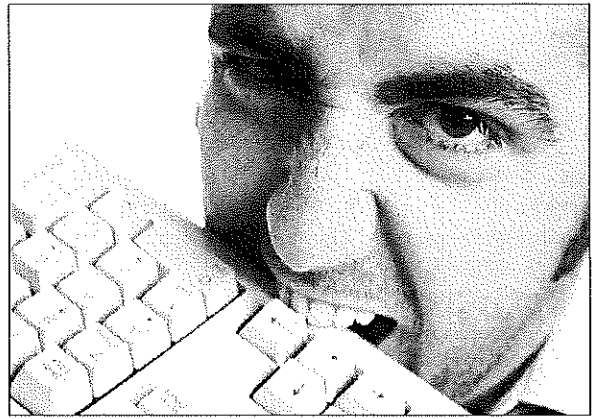


25 Quail St, St Helens, Tasmania. 7216.

Ph: (03) 6376 2629

Mob: 0400 054 110

email: marycporter@bigpond.com



Computer Trouble?

- 15 years experience
- Home & business
- Hardware & software
- Websites & email
- Windows, Mac, Linux
- ADSL, WiFi, Satellite

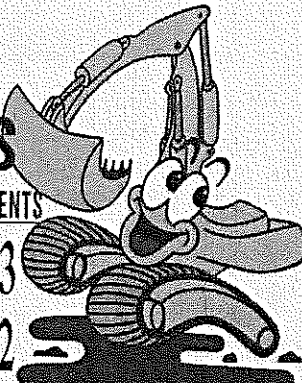
Call Ray on (03) 63 722 722

C & D EXCAVATIONS

FOR ALL YOUR EARTHMOVING REQUIREMENTS

Phone : 03 6372 2033

Mobile : 0439 722 032



LOCAL OWNER - OPERATOR
OVER 20 YEARS EXPERIENCE

Ph : Dana or Craig

6372 2033 /0439 722 032

Incorporating all your needs in:

DAMS, ROADING, FIREBREAKS, LAND CLEARING, HOUSE SITES, DRAINAGE, BRIDGE CONSTRUCTION.

- ◆ ROAD GRAVELS
- ◆ TOP SOIL
- ◆ SCREENED TOP SOIL
- ◆ SAND
- ◆ ROCKS
- ◆ ON SITE SCREENER 20mm to 75mm (TURN YOUR RUBBISH INTO TOP SOIL)
- ◆ 20 TONNE EXCAVATORS WITH TILT BUCKET & RIPPER, ROCK & LOG GRAB & QUICK HITCH
- ◆ D 65 KOMATSU DOZER, RIPPER & TILT BLADE
- ◆ 10 YARD TIPPER
- ◆ COMPACTION ROLLER
- ◆ WHEEL LOADER

AND MUCH MORE

Mon	Tue	Wed	Thu	Fri
		18 May <ul style="list-style-type: none"> ☞ ENE Cross Country ☞ Try-A-Trade Day - Gr 9s 	19 May <ul style="list-style-type: none"> ☞ Launching into Learning St Marys Kinder 10.30am ☞ Stepping Stones - Marys Kinder - 1pm ☞ Secondary X-Country ☞ Global Corporate Challenge commences 	20 May <ul style="list-style-type: none"> ☞ Launching into Learning 0-4yrs program - Fingal Kindergarten - 10am start.
23 May <ul style="list-style-type: none"> ☞ Girls Get Going 	24 May <ul style="list-style-type: none"> ☞ Inter-high Cross Country 	25 May <ul style="list-style-type: none"> ☞ 1st Round Immunisations (Fingal and St Marys Campus) 	26 May <ul style="list-style-type: none"> ☞ Launching into Learning St Marys Kinder 10.30am ☞ Stepping Stones - Marys Kinder - 1pm ☞ ENE Selection ☞ Secondary Social 	27 May <ul style="list-style-type: none"> ☞ Launching into Learning 0-4yrs program - Fingal Kindergarten - 10am start.
30 May <ul style="list-style-type: none"> ☞ Girls Get Going 	31 May	1 June	2 June <ul style="list-style-type: none"> ☞ Launching into Learning St Marys Kinder 10.30am ☞ Stepping Stones - Marys Kinder - 1pm ☞ ENE training and jacket sizing 	3 June <ul style="list-style-type: none"> ☞ Launching into Learning 0-4yrs program - Fingal Kindergarten - 10am start. ☞ Term 1 Ends

Above calendar is correct at time of printing For regular updates and other information please go to the school website:-

www.schools.education.tas.gov.au/stmarys

School Holidays - 4th June - 19th June.

Back to school Monday 20th June.



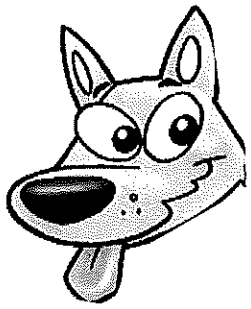
AFS INTERCULTURAL PROGRAM

From 30th July to 27th August St Marys District School will be hosting 8 Japanese high school students who are visiting Tasmania as part an intensive language program. This will be a fantastic opportunity for our school community to share experiences and meet students from a different culture.

We are looking for families who are willing to billet the students during their stay. If you have a spare room and could accommodate one or more of the students please contact me at the school for further details - 6372 3900

Sue Hindley

Celebrating our Super Savers!

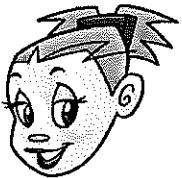


Recently we had Student Banking Support Officer Annette Roberts visit the school to talk to students about the Student Banking Programme and to meet some of our supersavers.

It is great to see lots of students saving regularly and collecting their Dollarmites tokens. School Banking has launched new and exciting reward items this year, which can be redeemed for 10 tokens each. If your child would like to continue saving their tokens from last year to redeem them for the backpack from the 2010 program they are welcome to do so. Your child should continue to collect 30 tokens to redeem for the backpack – this will be available until the end of Term 2, 2011. Please remember that the School Banking Rewards Program is designed to reward individual savings behaviour so no pooling of tokens will be accepted and for our school to receive commission deposits must be made through School Banking.



Annette was thrilled to see how our students continued to be motivated with their savings and token collecting this term. A number of our students have already been able to redeem 10 tokens for their rewards, while others continue to show amazing will-power and effort in aiming for their 30 tokens and the backpack.



To present some of our students with their awards, Annette brought along a special guest from Coinland—home of all the Commonwealth bank characters. Before now Pat the Dog appeared to be the most popular character in the minds of our students, however, after the visit of Spen, some of our students may have changed their minds. Throughout the assembly Spen “High Foured” (he only has four fingers on each hand!!) our prize winners, as well as parading around the front of the room and being just a little naughty!



Some of our Supersavers with excellent savings habits for 2011 are: Jasmine McKimmie, Lochie Aulich, Kate Aulich, Bridie Aulich, Ziggy Woods, Kimberley Latt, Trinity Latt, Kane Johnson (Backpack), Harrison Gee, Jayden Cooper, Breanna Singline, Elvis Russell, Fraser Russell, Taylor Jones, William Burt, Mahalia Baldwin.



For more fun and savings tips visit

Dollarmites Club <http://www.determinedtobedifferent.com.au/dollarmites/>

Coinland: <https://coinland.com.au/>

Resources for youth, students & parents: <http://www.commbank.com.au/personallyouth-students/default.aspx>

HOW STUDENT BANKING WORKS:



Every Tuesday bring your bank book and your money to school.



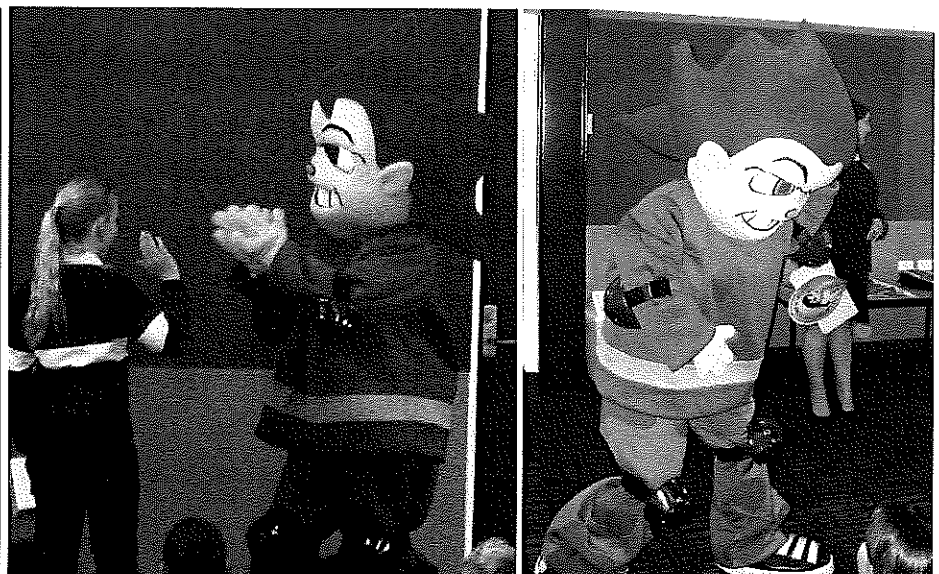
The school banking co-ordinators will process your deposit and give you a token to collect.



Once you have collected enough tokens to meet your prize goal, include them in your deposit wallet along with the coupon for the reward item you would like to redeem.

**reward coupons available from the office.*

Don't have an account? Account opening forms are available from the office.



ST MARYS COMMUNITY HEALTH CENTRE

DOCTORS ROSTER

Dr Cyril Latt- 19/5/11- 2/6/11
 Dr L. Reeckman- RFDS 23rd May
(St Marys Community Health Centre

GP Surgery Hours:

Monday—Friday 8:50am-12:30pm
 12:30pm-1:30pm LUNCH
 1:30pm-4:30pm

PATHOLOGY SERVICE

No Pathology Service between
 12:00-1:30pm or before 8:30am daily.

If you require Pathology **before 8:30am** an appointment **must** be made with the Nurses Station **the day/night before.**

INR TESTS

A doctor's appointment is required if you are having an INR test. Please **let reception staff know when making your appointment that you are having an INR test.** This is a 5 minute doctor consult.

AFTER HOURS SERVICE CONTACT NUMBERS

PLEASE PHONE GP ASSIST ON 1300 780 011
 AMBULANCE 1800 008 008 or
 EMERGENCY 000
 COMMUNITY HEALTH CENTRE 6372 2111
PLEASE RING BEFORE PRESENTING AFTER HOURS

SCRIPTS AND DOCTORS APPOINTMENTS

Please ensure doctors appointments are booked **prior** to your medication/s running out or **in advance** if you are attending this practice regularly.

Scripts **can not be requested by patients over the phone** and are unable to be done over the weekends, ensure you have enough medications in advance. **PLEASE BE PATIENT** waiting periods can apply.

GARAGE SALE

In the old Ambulance Shed at the
 Community Health Centre

A variety of miscellaneous items; windows, doors, freezer, shelves, kitchen equipment, chairs, mirrors, computers and printers, exercise equipment, commercial deep fryer, beds, scales and much more!

*** FRIDAY 27TH May 2011**

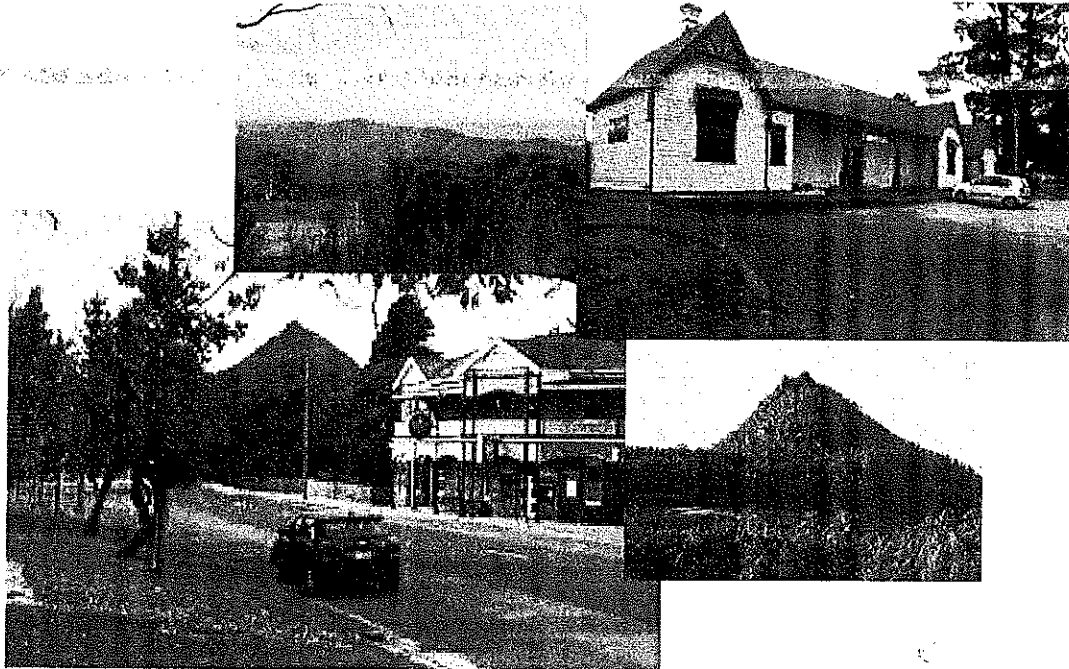
@ the Health Centre *
10am-2pm

Make an offer
as all items *MUST GO!*

WHAT'S ON AT THE CENTRE

- 19th May **Eyelines-** For appointments please phone 1300 139 363. All consultations Bulk Billed to Medicare
Relationships Australia- Leanne McMurtrie for appointments please phone 1300 364 277
Social Worker- Shan Williams appointments available by phoning 6372 2111
- 20th May **Diabetes Educator (GP North) -** Appointments available by referral from your GP
Dietician (GP North) - Appointments available by referral from your GP
Exercise Physiologist (GP North) - Appointments available by referral from your GP
Social Worker- Shan Williams appointments available by phoning 6372 2111
Tasmanian Acquired Brain Injury Service- Margie Williams.
- 24th May **Child Health Session** with Sue Gofton every Tuesday- Appointments only. Please phone 0428 136 381
- 25th May **Day Centre-** For details on the group please contact Hayley Gilbert 6372 2111.
GP North Mental Health Worker- Brady Young for appointments please see your GP for a referral
- 26th May **Social Worker-** Shan Williams appointments available by phoning 6372 2111.
- 27th May **Social Work-** Shan Williams. Please phone 6372 2111 for appointments
Tasmanian Acquired Brain Injury Service- Margie Williams
- 31st May **GP North Mental Health Worker-** Brady Young for appointments please see your GP for a referral
Tom Bain, Rae & Partners Lawyers. At the Community Health Centre Tuesday fortnights. For appointments please phone 6337 5555
Child Health Session with Sue Gofton every Tuesday- Appointments only. Please phone 0428 136 381
- 1st June **Day Centre-** For details on the group please contact Hayley Gilbert 6372 2111.
Social Work- Shan Williams. Please phone 6372 2111 for appointments.
- 2nd June **Relationships Australia-** Leanne McMurtrie for appointments please phone 1300 364 277
Social Worker- Shan Williams appointments available by phoning 6372 2111.
Continance Nurse- Sue Walker. For appointment please see your GP or Health Professional for a referral.
GP Podiatrist- Annabelle. For appointment please see your GP or Health Professional for a referral.
- 3rd June **Social Work-** Helen Jennings. Please phone 6372 2111 for appointments
Tasmanian Acquired Brain Injury Service- Margie Williams
- 6th June **Hospital Auxiliary Meeting** 2:00pm in the Day Room

St Marys Health and Community Forum



When: Thursday 26th May

Time: 2pm-4pm

Where: St Marys Hall

Afternoon tea provided

Win Prizes

FOR MORE INFORMATION
CALL KATHY LEFEVRE ON
63 76 5242

- Find out what services are available.
- Meet Service Providers.
- Find out how to access health and wellbeing services.
- Discover activities in your local community.

Healthy
HOUSE

MEALS ON WHEELS ROSTER

May/June	St Marys	Fingal
Monday 23rd	Val Spencer	Neighbourhood House
Tuesday 24th	Lundy Vosper	
Wednesday 25th	Lorraine Gill	
Thursday 26th	D & V Rice	
Friday 27th	Patricia Barr	
MOW Contact		Phone: 0488 384 344
Monday 30th	Lundy Vosper	Neighbourhood House
Tuesday 31st	Ruth Aulick	
Wednesday June 1st	Val Spencer	
Thursday 2nd	Heather Griffiths	
Friday 3rd	Claire Bean	Neighbourhood House

Church Services

Catholic Parish of St Marys

Sr. Lorraine Groves
Parish House. Ph: 6372 2252
Mob: 0409 172 741

1st Sunday: MASS

St Helens Vigil L/W 6.00pm
Bicheno L/W 9.00am
Fingal 11.30am

2nd Sunday: LITURGY

St Helens Vigil LWC 6.00pm
St Marys LWC 9.00am
Bicheno LWC 9.00am
Fingal LWC 9.30am

3rd Sunday: MASS

St Helens Vigil 6.00pm
St Marys 9.00am
Fingal 9.30am
Bicheno 9.00am

4th Sunday LITURGY

St Helens Vigil 6.00pm
St Marys 9.00am
Bicheno 9.00am
Fingal 9.30am

5th Sunday LITURGY

St Helens Vigil 6.00pm
St Marys 9.00am
Bicheno 9.00am
Fingal 9.30am

Enq: Baptisms & Weddings
Ph: 63 31 4377
Church of Apostles
Presbytery
Officer Hours: 10.00am - 3pm.
Sr Marjorie Ph: 6381 1122.

Anglican Parish of Northern Midlands

Avoca: 11am 2nd/4th Sundays
Fingal: 3 pm 1st/3rd Sundays
Mathinna: 3pm 2nd/ 4th Sundays
Ross: 11am 1st/3rd Sundays
Campbell Town: 9am every Sun.
(3rd Sunday -Family Service)

Anglican Parish of Break O'Day

Ph: 6376 1144
St Helens Every Sunday
8 am and 10.30 am
St Marys Every Sunday
10am
Pyengana: Kids Church,
2pm - 4th Sunday every month.

Salvation Army TUESDAY JAM

3-5pm every Tuesday.
excepting school holidays.
Envoy Melanie Norton Ph: 63722099

Break O'Day Uniting Church

The Manse St Helens
Ph: 6376 2405
St Helens 9.00 am
Fingal 11.15 am

Seventh Day Adventist

Hodgeman Street Scamander
Sabbath School 10 am
Divine Service 11 am

Contacts for Valley Voice

PH Judy: 6372 2155

email: judith.spicerburg@valleyvoice.com.au

Accounts: Mary: 6372 2328

Please leave written material at the
St Marys Pharmacy,
Main St, St Marys,
or post: C/- Post Office, St Marys. Tel 7215

Advertising: 2011

Classified: 25 words or less: free

Community notices: free.

Small boxed ads: Garage sales, Celebrations.

Thanks etc: \$12.

1/4 page \$20. 1/2 page \$30.

Full page \$50.

1 year posted subscription \$40.

On Air Now!

Vision FM 88.0 at

St. Marys, St Helens and Fingal.

Join Greg and Shelley on their program

'The Journey'

100% positive music & talk all day long;
connecting faith to life.

National Vision Radio Network.

Phone 1800 007 770.

web www.vision.org.au

St Marys Online Access Centre

Opening Hours:

Monday 10am - 3pm

Tuesday 10 am - 4pm

Wednesday 10am - 4 pm

Thursday 10 am - 3 pm

Friday 10 am - 3 pm

Saturday 11 am - 2 pm

Ph: 6372 2005

ST MARYS OP-SHOP

TRADING HOURS:

10AM — 3.30PM TUES TO FRI.

PH: Janet Drummond: 6372 2851.

WANTED

**Curtains and blankets, jumpers
& warm winter clothing.**

If your able to help, donations are
gratefully received by the volunteers at the
shop, or you can leave
donations in the Newsagents at times when the
Op Shop is closed.

*Please note change of phone number
whilst Tracy is convalescing.*

St Marys Sports Centre Inc. news Kackhander.

Miserable freezing weather hasn't helped the club in the past week or two for the golfers who have ventured out there to play. The ladies are a still ticking over though on Wednesdays. Well done to all the competitors in either women's or men's events because it ain't easy.

It is envisaged that in the coming weeks some Perpetual Trophy events will be rescheduled to encourage more players. One of these is the Spilsbury Trophy which missed out altogether last year due to circumstances unforeseen. Hopefully this great event will soon have a date to accommodate as many players as possible.

Bowlers please look out for upcoming working bees to carry out work around the green ready for next year as host club. Any help on these days will be gratefully accepted.

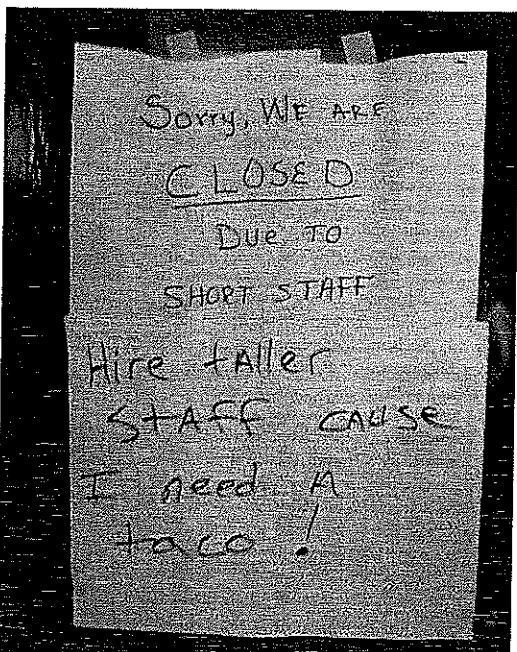
Indoor bowls is currently being organised which might include a game or two with Fingal and Cornwall. This should be fun.

Don't forget the TRIVIA NIGHT on June 4th. Will definitely be worth being part of with some great prizes and plenty of enjoyment all round. Teams comprise of 6 players and cost will be \$10 each. Sounds great.

Just a reminder that the Annual General Meeting will be held toward the end of June as usual with confirmation of the date next issue. It would be great to see plenty of our members interested in helping this great old club by maybe thinking about standing for committee. We need to look at all sorts of important and interesting matters with the club and fresh input can only be good. Please think about it in the next few weeks.

Until next time, good hitting and rolling..

Sign noticed on take - away shop.



38 Main Street St Marys
Phone/Fax 6372 2240 - Butcher Ph: 6372 2274
Mon - Fri 8am - 6pm
Sat 8am - 12 noon Sun - closed

This week's specials.

from the butchery

Legs of lamb	\$12.99kg
Blade steak	\$ 8.99kg
Lamb loin chops	\$14.99kg
Marinated beef	\$11.99kg
Ingham chicken breast fillets	\$12.99kg

cooking week

McKenzie's coconut 250g	\$1.79
Bundaberg white sugar 2kg	\$3.49
Glad Wrap 60m	\$4.99
Devondale butter pat 500g	\$3.99
Sunbeam mixed fruit 375g	\$3.45

deli & produce

Virginian ham	\$10.99
Middle bacon	\$14.99
Brushed potatoes 2.5kg bag	\$ 3.99
Mesclun salad 120g bag	\$ 2.95
Silverbeet bunch	\$ 2.25

Next week's specials

from the butchery

Porterhouse steak	\$15.99kg
Beef mince	\$ 9.99kg
Easy carve lamb roast	\$17.99kg
Ingham chicken breast fillets	\$12.99kg

from the cool room & freezer

Duck River soft butter 500g	\$4.99
Table Cape cheese block 250g	\$3.99
Dairy Farmers thick & creamy yoghurt 170g	\$1.49
Ingham chicken breast nuggets 400g	\$5.99
Birds Eye frozen peas 1kg	\$4.19

grocery lines

Nestle milo 450g	\$6.49
Ardmona canned tomatoes 400/410g	\$1.49
Whiskas vita-bites 1kg	\$4.99
Uncle Toby's oats 1kg	\$4.99
Sanitarium weetbix 1kg	\$3.99

May Calendar for Golf:
21st.....Newman Memorial
28th.....Stableford

