

THE VALLEY AND EAST COAST VOICE INC.

Established 1968

49.21 March 23, 2017

Deadline for 49.22 is 5pm April 3, 2017



Building Blocks news

Coming up at Building Blocks we have a **Play and Learn** visit to the Mathinna Community Centre on March 29

from 10.30 - 12pm, and a **Park Play** session at the St Marys Library on March 30 from 9.30 - 11am (wet weather SMDS Kinder Room).

Come along to our regular **KinderPlay** sessions at the St Marys Active4Life Gym from 1 - 2.30pm every Wednesday during school terms, with active play for busy children of all ages and access to gym facilities for parents / carers - or just share the fun with your children!

All sessions are free, and families / carers / grand-parents with children 0 - 5 years are welcome to attend. There will be stories, songs, craft activities as well as parenting tips and information.

For more information call Tanya on 0400 002 116 or visit <https://www.facebook.com/tanya.buildingblocks>



Hub4Health Walking Group at Skeleton Bay, photo taken by Fran and Stewart Taylor

Expressions of interest for the volunteer position of editor of the Valley and East Coast Voice Inc. are invited. Full details provided in response to genuine enquiries. Contact W Dawson on 0403 430 452 wdawson@valleyvoice.com.au

Catastrophe Averted - Warning!

As most of you may be aware, the Town came close to experiencing a catastrophe during the past week. This was caused by a gas cylinder on fire at the St Marys Community Hall.

Thankfully the resulting damage was only to the BBQ equipment, with some scorched paint on one of the Hall doors (all repairable).

The results could have been much worse with serious burns to the operator or even death, along with more extensive damage to timber work in the hall.

When operating any gas appliance PLEASE ENSURE THAT ALL fittings are tight, not only the cylinder connection.

Gas, when used correctly, is quite safe. When we become a little careless, it can be very dangerous with the risk of a major fire or even an explosion.

Before lighting your gas appliance please, check all fittings. Check for leaks. Make sure that any children are a safe distance away.

Do not have the gas appliance against or near a building or flammable material.

We as fire fighters are trained to handle these situations, however at times we are certainly putting our lives on the line in doing so. Please help us to help you keep safe.

Thank you in anticipation.

Gerald C Aulich (AFSM) Group Officer Volunteer

Editor: WM Dawson
e: w Dawson@valleyvoice.com.au
0403 430 452
web: valleyvoice.com.au
[facebook.com/ValleyEastCoastVoice](https://www.facebook.com/ValleyEastCoastVoice)
POB 230 St Marys Tasmania 7215

Advertising rates

Business card ads \$15	½ page ads \$40
Intermediate ads \$18	Full page ads \$65
¼ page ads \$25	Permanent classified ads \$20 p.a.

Notice to non-profit groups re advertising rates:
Articles submitted by non-profit groups are free up to a page, then they will cost 50% of the advertised fee. Private community announcements / private classifieds are free for two issues.
Annual posted subscriptions are \$69 and annual online subscriptions are \$20.
Articles for publication may be left at the St Marys Pharmacy, posted or emailed. For online advertising, contact the Editor.
We do not accept responsibility for the accuracy of information provided by contributors. Opinions expressed are not necessarily those of the editor or volunteer staff.

The Valley and East Coast Voice Inc.

Opinions in any letters published are not necessarily those of the Editor and committee, or volunteer staff. Our pages remain open to fair and honest criticism so that on all questions both sides may be presented, but any submissions containing personal attacks / libel / slander will not be accepted.
Kindly do not attack the editor, the paper or the authors of previous articles.
All articles for submission must bear the author's name, town of residence, address and phone number. The address and phone number will not be published but are for verification purposes only.
Letter writers will be given the chance to respond over a suitable period of time. Subjects may be closed at the editor's discretion. Please make sure of your facts. Do not write submissions just to let off steam. Articles most commonly published are those relating to current community issues.
Keep articles short, simple and to the point. Letters are restricted to 300 words or fewer.
The editor reserves the right to edit any submission for grammar, spelling or reduction in size where necessary. All letters/emails must include your full name, address and phone number.
The Valley and East Coast Voice Inc. reserves the right at all times, without notice, to update, change or amend our guidelines.
All information is correct at time of printing. Whilst we value and welcome community input, the Valley and East Coast Voice Inc. does not provide specific feedback regarding any decision made not to

Community Notices

ROSSARDEN Fire training and BBQ dates are: April 1, May 6, June 3, July 1, August 5, September 2, October 7, November 4 and December 2.
Fire Brigade training is 10am prior to each BBQ.
Mike Prewer, Rossarden. 6385 2184

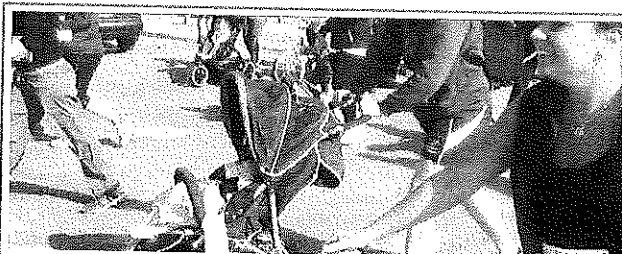
Rossarden Progress Association meeting dates for 2017: 3pm at Marlene's on April 17, June 12, August 14 AGM.
Mary Knowles, Secretary, Gipps Creek. 6385 2002

GET meeting dates for 2017
April 17, June 12, August 14 AGM,
October 9, November 24 and December 4.
Usually 7pm at the Fingal Valley Neighbourhood House, but the next meeting on **Monday March 13 is a meal at Bean There Café, Fingal 6:30 for 7pm.**
Please RSVP if you would like to join us. All welcome
Mary Knowles 6385 2002
gippscreek@skymesh.com.au

St Helens Soccer Club invite interested junior (aged 5 and over) and senior players to come to the Recreation Ground on April 1, at 10am. Everyone welcome.



Bronwyn Gunner, President, St Helens. 6376 1405



It's time to get into training for the **3rd Anzac Fun Run and Walk** at St Helens on the 22nd April, commencing 10.30am.
Trophies will be awarded to 1st male and female runner in the 2km, 5km, 10km and under 16 events.
The course is pram and wheelchair friendly, with all categories starting at the St Helens Sporting Complex. This is a fundraising event for the Local Chaplaincy Committee at the St Helens District School. Participants are invited to register at www.registernow.com.au or via a registration pack at Good Sports in St Helens, or at the St Helens School office.
If you are interested, follow us on [https://www.facebook.com/St-Helens-Local-Chaplaincy-Committee-1548985978693901/?hc_ref=SEARCH&fref=nf](https://www.facebook.com/St-Helens-Local-Chaplaincy-Committee-1548985978693901/)
A fun day for everyone is assured.
Enquiries to: Carole Withers, Chairperson, St Helens Local Chaplaincy Committee on 6376 1638

Community Notices

Fingal Valley Neighbourhood House Inc.

Talbot St Fingal
6374 2344 / admin@fvnh.org.au



Facebook We have a new Facebook page which is our main communication tool for what is happening at the FVNH. Like our page to keep up to date. <https://www.facebook.com/fingalvalleyneighbourhoodhouse/?fref=ts>

Play Centre We are now taking enrolments for 2017.

School Holiday Activity Aquatic Centre and MacDonald's. Wednesday April 26. Leave FVNH 9.30am. Cost only \$10 for Bus. Bring along bathers, towel, packed lunch or buy at Aquatic Centre. MacDonald's \$5 limit.

Morning Tea Is now on every Wednesday morning at 10am. Come in and have a cuppa, snack and chat or if you wish, bring a plate to share.

Wedding Dress Parade Due to unforeseen circumstances the Wedding Dress Parade will now take place in September. Date to be advised.

Some Up and Coming Events Agfest Saturday May 6, Carrick. **Blooming Tasmania Flower and Garden Festival** Saturday September 23, Launceston. **Bloomin' Tulips Festival Day** Saturday October 14, Wynyard. **Tasmanian Craft Fair** Saturday November 4, Deloraine. These are a few of many trips being organised.

Hub4Health St Marys Gym Starting Monday March 20, 2017 from 6.30 - 7.30pm. Bus leaving FVNH 6pm. Gold coin for Bus and Gym would be appreciated. Contact the FVNH for more information during office hours.

OP Shop Call in to our lovely op shop and pick up some great bargains at \$5 a bag. If you wish to donate any items please call into the op shop during opening hours.

Contact the FVNH on 6374 2344 or call into Office from 9am - 3pm Monday to Friday for more information.

The Fingal Valley Neighbourhood House Inc. is funded by the Crown through the Department of Health and Human Services

For Sale

Coogan's Style **Robe and dressing table**. Circa 1940, dark stain, possibly Tas oak. Robe has long and short hanging space and inbuilt drawers. Dressing table has drawers and cabinet space (with shelves) plus nice mirror. \$200 ono St Marys **0429 370 629**

Chicken litter to be used as fertilizer. 20lt bags for \$5 per bag, St Marys. **Ph Jason or Tracey on 0419 514 947**

I may be old and feeble, but I'm still selling moo poo. **Norm 6372 2380**

Large round bales hay, not rain effected. \$55. **Alan 0407 944 158**

Small bales of **pea straw**, \$8 / bale, negotiable depending on quantity bought. Avoca. **6384 2160**

3mtr loads **firewood** for sale, \$180 St Marys, \$190 Fingal. **Ph. Danny and Jenny. 0417 385 935**

GARAGE SALE

We are moving and must downsize.

Furniture, tools, lots of books, homewares, sound system, wetsuit, children's books & toys, old bottles, collectables, etc. No reasonable offer refused!
Sat 25 and Sun 26 March - gate open from 8am
22 Denneys Rd St Marys (off Lower Germantown Rd).
6372 2686 or 0458 648 927

GARAGE SALE

25 Gardiners Creek Road, St Marys
Saturday & Sunday March 25 & 26
9.30am - 3.30pm

Lots for sale at very reasonable prices, mainly household items.

Community Feedback wanted on the St Marys Toilet block



The St Marys Public Toilet block located to the rear of the St Marys library has been identified as a high use facility, and is due for replacement based on its age and demand. Council intends to demolish the existing facility and replace it with a new modular design, that includes access for persons with a disability and will be designed to withstand the impact of any possible future flooding of the area. (See plans under 'Latest News' on the Break O'Day Council website, www.bodc.tas.gov.au). A future proposal also includes upgrade of the BBQ facility, tables and picnic area to accommodate for current demands. Council seeks your input in relation to the location and potential improvements to this project. **Feedback can be emailed to admin@bodc.tas.gov.au addressed to Council's Building Services Coordinator, Jake Ihnen.**

International Worker's Memorial Day, an event which commemorates employees who have lost their lives at work, will be marked at an event on the St Helens foreshore on Friday April 28 at 8am. The commemoration will be followed by a barbecue breakfast. All welcome.

The event has been organised by the Break O'Day Branch of the ALP.

More details in the next Valley and East Coast Voice Inc.

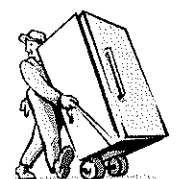
For Rent

3bd house in St Marys for rent, walk to school and shops. \$190 / week. **Ph 0447 77 687**

Ransley's Appliance Service

POB 136 Scamander Tasmania 7215

*Washing machine noisy?
Refrigerator runs too long?
Clothes dryer blows cold air?*



then you need the services of our technicians
6372 5307 / 0428 761 811

Letter to the Editor

Dear Editor

I was saddened to hear last week that pews from the St Marys Anglican Church are up for sale on Gumtree, for \$700 each. These pews date back to 1890.

I had this confirmed by Rev Alexander Withers of St Helens; it was a decision made by him, Rev Michael Wakefield of St Helens, Christine Waters of St Marys and agreed to by the Property Council of the Church in Hobart.

Evidently the pews are to be replaced by some armchairs which will be more comfortable to sit on, plus tables and chairs already set up in the Church. At present the pews are pushed to the northern and southern sides of the church and only used when there is a funeral or a wedding.

I am not a regular Church-goer now, but I was born here, grew up here, attended Sunday school, was confirmed in the old Church, married in 1967 in the old Church and I am still here.

The original Church was demolished in late 1967 for, I believe, unsound engineering advice. The stained glass windows and the Pipe Organ were sold off to private buyers. These items could well have been used in the new Church, but it was not to be.

Once items like the pews are sold, they can never be replaced.

The replacement Church was constructed mainly through the efforts of a community fundraising exercise, topped up by the Government and others, so the local community have a long term interest in the ongoing future of OUR Church.

Ruth McGiveron, St Marys

Dear Editor

I would like to commend the Valley Voice for its article regarding Nicorette chewing gum. I personally find myself chewing too much in my war with cigarette addiction. Albeit, I haven't lost my hair or teeth and I will not be giving up tomatoes or potatoes where nicotine is found naturally. I have done previous research on this particular product and my interest was aroused again to do further investigation. Following this informative commentary I thought the Valley Voice could follow up with more health issues. I personally would like to see more conversation about the obesity problem and its detrimental effect on health. Recreational smoking of marijuana and the effect it can have on long term memory loss as described in "Scientific America" and the abuse of over the counter pain tablets which are in the process of becoming prescription based. Especially, Mersyndol which is now called the new "Bex" of the twenty first century. I am not trying to proselytize or regard anyone as a social pariah who partakes in any form of self medication and I personally will always remain a strong advocate for medical marijuana, I just believe informed people make the best decisions.

Wendy Brennan, St Marys

Hilly's IGA St Marys

Open 7 days a week



'think Hilly's, think convenience'

Pizzas made wholly in house,
ready to cook.

Large range of salads
made fresh in-store.

Succulent BBQ Chickens
cooked to perfection.

Cookies fried chicken

and hot chips available 7 days.



Hilly's IGA St Marys and St Helens

'we stand for fresh'

TasWater Chairman Miles Hampton responds to Treasurer's media release March 15, 2017



Yesterday the Treasurer made a number of statements that need to be addressed. Firstly he stated "I stand by the comment I have made, we have raised this issue over and over again ... what do you think the head of an infrastructure corporation talks to the Treasurer of the state about?" While I have no desire to enter an ongoing debate with the Treasurer, the simple facts are that in 2015 we sought help from the Treasurer to address drinking water quality in small towns. We were advised by him that tanks were an acceptable solution and that no support would be forthcoming. As a result, we developed our own plan to solve the issue. Our subsequent discussions with the Treasurer focused on a \$1.8b proposal by TasWater to fix Tasmania's water and sewerage system, including that would both resolve the relocation of Macquarie Point Sewage Treatment Plant and address overflows from Launceston's combined stormwater and sewage system. While the Treasurer was initially supportive of this proposal, ultimately the state and federal government advised they were not in a position to offer assistance. As a result of this we developed an alternative \$1.55b plan that excluded Macquarie Point and Launceston's combined stormwater and sewage system on the basis that without government support, we could not justify water and sewage customers paying for these projects. While I do not wish to continue in an ongoing public debate over what was and wasn't said in meetings with the Treasurer, I cannot let the statement that '...we have raised the issue over and over with TasWater' remain unchallenged, given that it is simply not true. I stand by my comments yesterday that not once did the Treasurer raise concerns about our progress, in writing or directly to myself or our CEO. The Treasurer has also provided a media release confirming my statement in the recent GBE Scrutiny hearings that with more money we could build things faster. Of course, with careful planning and additional external funding, we can look to accelerate certain elements of our program. The concern is that the Treasurer has stated that the 10 year plan can be halved without any attempt to engage with us in order to understand the complexity and risks of such an acceleration, which we believe is unachievable and will result in significant wasted public money. Unfortunately, since August last year the Treasurer has made no attempt to engage with us on proposals including the recently announced halving of our plan. To date we have not seen his plan on how he will achieve a halving of the time-frame. The Board of TasWater is comprised of independent professional directors, each of whom has a fiduciary duty under company law to act in the best interests of the corporation and ensure that it remains viable now and into the future. Based on our financial modelling of the government's announcements, by 2021 TasWater will no longer be a viable entity and therefore require substantial ongoing external support, or a significant sustained increase in customer prices to allow it to continue operating. This is not a situation that any responsible independent Board operating under company law can ignore. To date we have not seen any modelling by the Treasurer of the long term effect of his plan on TasWater's financial viability. We remain willing to work with the government and our owner councils on how we could sensibly accelerate elements of our plan, and would certainly welcome additional funding, provided it is made available in a manner which is sustainable in the long term and does not unfairly penalise future TasWater customers.

Further information: Simon Pilkington, 6237 8201

East Coast Vet Clinic

Dr Jeff Parsons regularly visits
the Fingal Valley
for all your veterinary needs.



*For appointments, please call the
clinic in St Helens on 6376 1577*

**Splash
Seymour**

**You swill it, we fill it!
You dump it, we pump it!**

**Water cartage
Septic pumping**

**Contact Mick
0488 777 713**

The Say, by Cagerattler

Talking to Louis, my friend in Baltimore last Saturday night again, really opened my eyes to how unfair some people can be. Back in December last year there was a terrible crash on Highway I-95 in Baltimore. Louis's wife Angela was driving to work that morning about 5 am and a frantic panicking woman decided to climb out of her car during the carnage in which two people died, and 11 were injured. The road was extremely slippery, covered in thick ice, and as Angela approached the woman's decision to jump out at her caused Angela to have to change direction to avoid running directly over the woman. There was a minimal contact instead as Angela's car stopped, and had a very low repairable impact on both cars etc., but thankfully Angela's awareness severely limited what could have been much much worse. The police praised Angela for her awareness and attention, and she had no charges laid against her for anything she did or didn't do. Her speed was very low, she was driving to the conditions, and was praised by the authorities - unlike many others caught up in the horrific carnage.

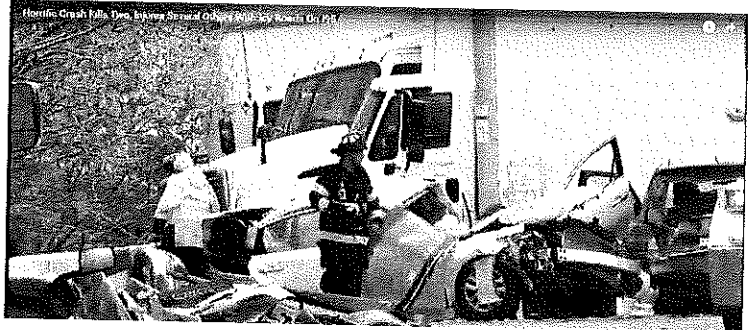
The other woman basically caused the collision by stepping out in the severely icy road.

On Saturday Louis told me that the other woman was threatening to sue them for causing her injury. Instead of thanking Angela for saving her from her own stupidity, she was trying it on to see what she could get out of it. Thankfully it looks like common sense will prevail and a ruling that is fair and equitable, given the extreme and unusual circumstances, will occur.

After the call I began thinking how often the law and fairness are potentially not always the case. I hate the term "By the letter of the law". To me that usually means someone is trolling through an incident to try and find something to hang their hat on, and gain an advantage, and that is perhaps what laws of the land are NOT intended for. All this really does is feed unethical practices by complainant's and lawyers alike if they are so inclined. Thankfully most are not but some are, like in Angela and Louis's case it seems.

This stuff happens here too and I hope the people who do try it on think of the consequences of using the law to gain advantage instead of just getting fair justice, as it would be originally intended. What do you think?

Rod McGiveron, St Marys



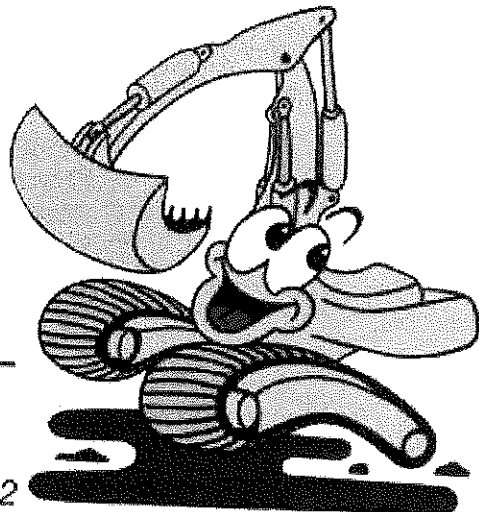
<https://www.youtube.com/watch?v=ePzrh16BenE&authuser=0>

C & D EXCAVATIONS

For all your earthmoving requirements

- Road gravel.
- Top soil, screened topsoil.
- Sand and rocks.
- On sight screener 20mm - 75mm.
- 20 tonne excavators with tilt bucket, ripper, rock and log grabber and quick hitch.
- D65 Komatsu dozer with ripper and tilt blade.
- 10 yard tipper.
- Compaction roller.
- Wheel loader.

**Dams, roads, firebreaks,
land clearing, house sites,
drainage, bridge construction
and much, much more ...**



**LOCAL OWNER/OPERATOR WITH
OVER 25 YEARS EXPERIENCE**

Call Dana or Craig: 6372 2033/0439 722 032

Break O'Day Council to introduce kerbside recycling



March 20, 2017

Break O'Day Council unanimously passed a motion recently to introduce kerbside recycling to the Break O'Day area for the 2017 – 2018 Financial Year. This decision involved a thorough audit of Break O'Day's current waste systems, ensuring that the cost would not come at a large cost to rate payers. Current costings anticipate the charge of this service to be less than \$1 p /week p / property, with Council working to identify further operational system improvements to reduce the costs further.

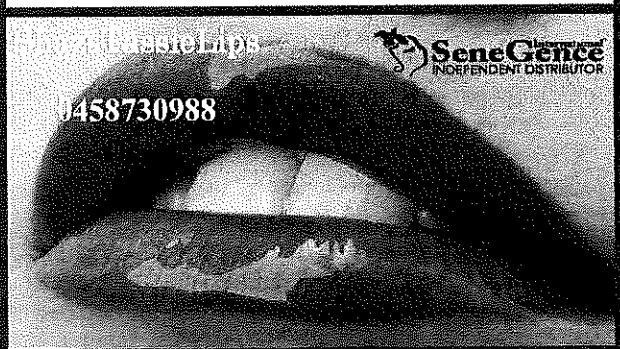
"This is something that our community has wanted for some time and we are pleased to be able to finally offer this service. While there is still some detail to finalise, including a tender process for a contractor, Council believes this is a big step towards a more sustainable and environmentally friendly Break O'Day region, and is certainly something I am proud to be a part of," Mayor Mick Tucker said.

Mayor Tucker said introducing the kerbside recycling program to the municipality will include community education on which bin to use and what can and cannot be recycled. The Break O'Day area is unusual in that it uses blue and yellow bins for general waste, however bins with yellow lids are recognised the nation over as recycle bins. This means that when residents receive a new bin, which will have a red lid, this bin will become the general waste bin.

"We understand that we have a lot of work to do to ensure people understand the process and dos and don'ts of recycling, and we will be working with the community via various mediums to ensure these messages have a wide reach. It is our hope that the community embrace these changes to our waste systems, and make the most of the new service," Mayor Tucker said.

For any inquiries please call Break O'Day Council Communications Coordinator Jayne Richardson on 6376 7900 / 0400 454 089.

Lipstick that STAYS on!



YES LADIES. IT'S TRUE! A REVOLUTIONARY HIGH QUALITY LIPSTICK THAT IS:

- KISS-PROOF
- WATER-PROOF
- SMUDGE-PROOF
- BLEED-PROOF
- WAX FREE
- LEAD FREE
- NOT TESTED ON ANIMALS

Over 70 colours to choose from!

FIRST TIME USERS:
PURCHASE A STARTER SET FOR \$74
Colour, Glossy Glos & Ooops! Remover
INDIVIDUAL COLOURS \$34 EACH
GLOSSES \$26 EACH

www.senegence.com/ShazsTassieLips
Facebook : ShazsTassieLips



HARMONY DAY



A Feature Documentary

Cast From the Storm

March 29 ~ 7pm start

St Marys Town Hall

Ordinary Teenagers ~ Extraordinary Stories

Cast From the Storm tells the tender story of a group of teenage refugees who share their extraordinary stories when they join Treehouse Theatre, an after-school theatre group. A coming of age story, this uplifting documentary shares the reality of what it means to be a teenager and a displaced person.

This is the story of what comes after, and what it means to re-make your home. This isn't your typical refugee film.

PG Rating - Mild Themes
72 minutes - All Welcome
Light refreshments will be served
Gold coin donation



ROAD CLOSURES

Mathinna area

APRIL 1st

The first round of the Tasmanian Rally Championship will be conducted in the Mathinna area on April 1st, with permission from Forestry Tasmania and Tasmania Police
Roads will be closed from 7am to 7pm

The closures effect the following areas:

Tower Hill

- Tower Road
- Cox Road
- Malahide Road (top end)

Mt Nicholas

- Barnes Road
- Hogans Road
- Evercreech Road (including Evercreech Forest Reserve)
- Back Gully Ridge
- Talbots Road
- Durham Road
- Sugarloaf Road
- Pimple Road

Saddleback

- Claytons Road
- Robinsons Link

For further information, please contact rallies@500carclub.com.au or phone Graham on 0438 728 910



Tasmanian Pollie Pedal 2017

9 March 2017

The annual three day Diabetes Tasmania Pollie Pedal completed over last weekend raises awareness and much needed funds for people with diabetes in Tasmania and those at risk. It is also designed to promote a healthy lifestyle.

Since establishing the event with Diabetes Tasmania in 2006, I have cycled every kilometre of the nearly 3300 kilometres of Tasmania for this special cause, and over \$560,000 has been raised to date. Over \$43,000 has been raised from this ride alone, with donations still coming in!

This year we were honoured to be joined by Her Excellency the Governor, Professor Kate Warner, and Mr Warner, on day three of the ride. We were also delighted Diabetes Australia Chief Executive Officer, Greg Johnson, could join our riding team that included Dr Vanessa Goodwin, Mr Mark Shelton and Mr Ivan Dean MLC.

We had terrific sponsors and community leaders supporting the event, visiting schools, aged care homes and hosted community events along the way.

On day one we started at the Hadspen Caravan Park, farewelled by Meander Valley Mayor Craig Perkins. Riding on to Cressy District School we met and mingled with the grade six students. Mayor David Downie officially launched us from Cressy and then we rode on towards Poatina.

Although it felt insurmountable we finally conquered Poatina Hill and were warmly welcomed by Fusion and members of the local community, where we had a short break before continuing on to the Great Lake Hotel at Miena in the beautiful Central Highlands.

We had a fly fishing demonstration prior to the dinner at the Great Lake Hotel, thanks to Garry France, the Anglers' Alliance of Tasmania President, and also Malcolm Crosse who gave us some words on the World Fly Fishing championships coming to Tasmania in 2019.

Day two saw us depart the Highlands heading to Bothwell where we were welcomed by Mayor Lou Triffitt. We enjoyed the Bothwell Spin In and met patron Barbara and many others. Riding on in 28 degree heat to the Gretna Green Hotel, we had a quiet one to get us all the way through to New Norfolk. We were welcomed by the Derwent Valley Mayor Martyn Evans and were hosted at a community BBQ.

On day three we toured Willow Court, thanks to Mayor Evans and Damien Lester. We were given an overview of the Agrarian Kitchen thanks to Rodney Dunn, and heard some of his great plans for his new restaurant and

cafe at Willow Court. We left New Norfolk and headed towards Government House with Her Excellency and Mr Warner, stopping at Barossa Park OneCare aged care facility on the way through.

The community support over the years has been fantastic, with some people stopping us on the street to donate and offer support.

The Diabetes Tasmania Pollie Pedal is designed to make a difference and it has. We have helped thousands of Tasmanians and with community support we will continue doing so.

We could not do this without the fantastic support from our corporate sponsors: Norgine, OneCare, MAIB, Tasmanian Medial Laboratories and IGA; and also Colin Etter of Crisp Ikin Agencies and Marcos Ambrose from Thousand Lakes Lodge who donated auction items.



Guy Barnett MP with Her Excellency Governor Kate Warner and riders at Government House, Hobart.

A special thank you to Nelson Humber, and the many volunteers of the Rapid Relief Team. They were always welcoming, professional and willing to go above and beyond to support the riders.

Finally, a special thanks to the team at Diabetes Tasmania. In particular CEO Caroline Wells, who has spearheaded this event together with myself for some 12 years now, and this year with terrific support from Ange Headlam, the Fundraising and Marketing Coordinator.

Thanks also for the wonderful support of Caroline Thomas, who also has Type I diabetes like myself, and Sally Stubbs who provided support in terms of massages at the end of the day as and when required. It was a terrific effort.

In its twelfth year, another successful year, I'm delighted to have been able to saddle up, support and ride all the way - 270-odd kilometres - for people with diabetes, their families and those at risk.

Guy Barnett MP is a State Member for Lyons and Diabetes Australia Ambassador.

There is still time to donate: <https://polliepedal2017.everydayhero.com/au/Guy2017>



10 years ago conclusion

We are now into the final stages of extinguishing the fire and mopping up any hot spots, we need a black edge around the entire circumference of the fire at a distance far enough into the burnt area so as to stop any internal burning embers blowing out and reigniting a fire. When I say black, this means exactly that, no sign of smoke whatsoever, each and every log or limb to be turned over and any sign of fire eliminated, every tree within this area to be fully encircled with appropriate action taken, any stumps burning or suspect to be broken up and extinguished, any hot spots in the ground to be raked out (where possible) or blasted with high pressure water so as to turn the hot spot into a porridge (by just pouring water on these spots, all you do is cause the fire to bubble up disturbing the ash bed, this then has a sealing effect across the top of the fire, you think it is out, move on and bingo up it pops again).

Hot spots of major concern

A quick recon of the area tells us that we have several spots burning in the peat marsh, that is what most people would regard as a lagoon at the Scamander end of Steels Strait as you round the corner. This area had been dry for so long that it had caught alight in several spots; being peat presented a problem, this will burn underground for some distance undetectable before popping up again and presenting the same problem.

Coal seams dotted throughout the region alight, the slack heap at the foot of Cornwall hill burning, coal and slack that had built up over the years of production and had become a natural part of the landscape, before the bridge, burning underground.

Dangerous trees still burning throughout the entire area

How to deal with these situations, because the coal and peat were unique in their own way, each had to be dealt with differently (no use just pouring water on them).

Let us deal with the peat first, identify the hot spots - at least most times you would see signs of smoke by observing the area which at times meant standing there watching for a puff of smoke. Then the task was to manually dig the area out, blast it with high pressure water, check for any continuing signs of steam indicating that there was still underground fire. All looks good so move on to the next spot and repeat the performance, then re-check the previous area, more smoke or steam, go through it all again, no sign of either, move onto another spot. When you were satisfied that there were no more visible signs, move on to the next task and return to check the area later in the day or next day, only to find more spots had popped up. This process was followed until it was totally extinguished.

You may well ask why not use an excavator to dig it out, peat given what it is, one small undetected piece still smouldering in a bucketfull of dirt will set the whole pile off again in probably a few hours or a few days, but ignite again it would. This would be like a dog chasing its tail, you never catch up, so go the hard yards in the first place. This was quite an effort really, not being able to get the truck (appliance) near the burning area meant we had to run a long hose lay sometimes up to 7 lengths (each length is 30 meters), then depending how close the next trouble spot was, we had to uncouple each section and relocate (trying to drag more than one length at a time can at times cause problems). It was a slow arduous task, but had to be done, with sheer determination we eventually won that battle.

The way I have written this, you may get the impression that we only dealt with one particular problem at a time, this is not so, we had crews working right across the region simultaneously and I am just giving an overview of each problem.

The dangerous trees

These had to be identified and dealt with, identification usually came from the crews doing the blackening out, however we would also get calls from concerned residents regarding a partly burnt out tree on their property, in some cases leaning over the buildings. These such trees were dealt with by very experienced fallers, quite often with the aid of a machine to push the tree in the required direction. Falling any burnt out tree requires considerable skill; because they are burnt out, you do not have the necessary wood left to put in a decent front, if at all (a front is where the faller cuts out a wedge shape of the trunk to assist the tree to fall in that direction). There may not be enough wood left in the rear to wedge the tree if you need to assist the tree in its ability to fall where you want it.

Probably one of the most dangerous burnt out trees to fall is the one that is burnt out up into the head area. The problem here is that quite often when the tree starts to move, it does so with a sudden lurch, this has the effect of snapping off the entire head or individual limbs which fall where you had been standing. Another danger is what is known as the widow maker, where a loose limb is hanging in the top with the possibility of falling to ground at any time.

The burning coal

Over a period of time this gave us a lot of grief and required a combined effort from TFS crews, Cornwall Coal and private contractors. Just to find the burning area at times proved difficult. We would get a call regarding the sighting of



Backburning at Cornwall, photographer Ian Gabites, Firefighter of Hadspen Brigade

One seam in particular necessitated that we had to construct a water hole (carting the water in to fill the hole), then with the aid of an excavator dig the white hot coal out and dump it into the water to extinguish it. The bucket on the machine was so hot each time that we were continually cooling it down. To get the water to the hole and onto the bucket meant pumping it a considerable distance. This also called for additional personnel to relay messages by hand signal back and forth as the appliance was out of sight (this is necessary because with the pump running hard, no water being used, the friction of the impeller in the pump will boil the internal water and blow the seals out, rendering the pump unusable).

Now let us move to the foot of Cornwall hill, with a lot of under the surface activity covering a significant area, virtually undetectable, what to do? With a very small flow of water in the creek, it meant constructing a small temporary dam for a water supply point. Christmas morning, up early, do a patrol of the area (all available brigade members taking part), make arrangements to pick up additional equipment in Launceston, tell the family in there that we would be in for Christmas dinner and head in. While we were having our dinner, the TFS District Officer loaded the required equipment into the vehicle for us so as to save time later. Dinner over, time spent with family, notify members back home that we were heading back to Cornwall to meet there and set up the equipment (referred to as a ground monitor).

This unit consists of a petrol driven pump, hoses and an adjustable spray unit to be placed as required. The idea is to pump water 24 hours a day onto the burning area until it is saturated and all signs of fire eliminated. As I have said before, this type of action with under surface fire (especially coal) will not work, the only thing to do is bring in the heavy pumping unit. With the unit in place and another 1-2 units carting water to keep the main one full, hoses run out, appropriate branch (nozzle) selected, the pump is running to near maximum pressure; the water is then blasted into the ground to a depth required to reach the seat of the fire. The whole area has to be treated like this.

I will try to paint a picture of this. We have one main unit (truck) with the pump running at 1,000 - 1,200 kpa pressure with a pump operator closely monitoring the pump at all times, hoses run out to the area where needed, one or two people to help move the hoses as required, then two people on the end (branch) to control and direct the jet of water to the needed place. This is a very tiring job especially for the branch operators, so they have to be rotated at least every 20 minutes if not sooner, grappling with that pressure for long periods certainly takes it out of you; as well as that, the hoses under that pressure become stiff and hard to drag (hence the hose handlers). The branch operator can adjust the water flow at the branch, turning it off if necessary. If the water is turned off at the branch end, the pump operator must closely monitor the temperature of the water in the pump, because water under this pressure with the friction of the pump operation will soon boil. The operator has a range of options to control this, but at the same time has to watch the branch person to ensure the required water is there when it is needed (these messages are conveyed through a series of hand signals), as well as this the operator has the responsibility of not letting the pump run out of water (this is not detrimental to the pump but it may cause the branch operators to sustain burns). The backup units with a minimum of two people on each unit are kept busy supplying water for the main unit.



Sector leader at Cornwall, photographer Ian Gabites, Firefighter of Hadspen Brigade

Continued p13

At this point I feel that the story is becoming too repetitious and would continue to do so, because this is the type of work that we undertook for some weeks after the fire. It was work that had to be done and it is a necessary part of blacking out.

TRAGEDY

One evening, towards the end of operations, came the heart wrenching phone call to advise us that one man had just paid the ultimate price, losing his life while helping to fight this fire and put an end to this disaster.

I am not going to dwell on this, only to say that the accident was caused by a domino effect of a falling tree. Ten years later if I sit and think about how this young man lost his life helping us fight this fire (a man who loved his work and still had his life in front of him), it brings a tear to my eye. Yes we had lost houses, sheds, vehicles, machinery, animals, irreplaceable family memorabilia, the list goes on and on; we had a totally devastated landscape, electricity and communication systems down. There had been some minor injuries throughout both fires and residents, fatigue, smoke inhalation etc. For a man to lose his life at all, let alone so close to the end of operations, was totally devastating.

R.I.P. THOMAS ORR



*St Marys Pass, photographer Ian Gabites,
Firefighter of Hadspen Brigade*

This has been my story on the 2006 fires, each and every person who helped fight that fire will have their own story. Each and every person who lived through that fire (residents or loved ones living away, anxiously awaiting news) will have their own story. Our loved ones at home, not knowing where we were or if we were ok, we knew we were alright but they had no idea, they will have their own story. Possibly the most difficult part now is where to start thanking people for their help, assistance and understanding, for it is inevitable someone will be missed out, so I will say a general thank you across the board, noting a few.

- All Firefighters and TFS personnel**
- Forestry Tas.**
- Parks and Wildlife**
- Police**
- SES**
- Ambulance Tas**
- Aurora**
- Telstra**
- All business places**
- Residents (combined)**
- Lions Club of St Marys**
- Break O'Day Council**
- People who supplied and helped deliver food, Red Cross, Salvos**
- Private Contractors (some donated time or equipment to the event)**



Fire appliances, David Gully Road, photographer Ian Gabites, Firefighter of Hadspen Brigade

The list goes on and on, it is inevitable that I have missed some, so in closing I will say THANK YOU to one and all, especially to our loved ones who were anxiously awaiting our safe return.

Gerald C Ausich, (AFSM)



Where do you find us?

5 Portland Court, St Helens, 7216

Phone: 6376 2971

Email: admin@hub4health.org.au

Web: www.hub4health.org.au

Our Aim:

To deliver health and wellbeing programs to rural and remote communities within the Break O' Day Municipality.

Funding Challenges Ahead

Changes to the way allied and preventative health services are funded mean Hub4Health is looking at all its services and how these are provided. It will be challenging as we move forward but we are focusing on improving and expanding our services as we continue to fight for more funding. Rural and remote living should not be a disadvantage in terms of health care provision. We are determined that availability, quality and cost of health services should be within reach of all residents of Break O' Day and the east coast. All Hub4Health services are open and available to all residents. We appreciate your support during these changing times



Australian Hearing will be at Hub4Health on **Friday April 28** conducting **FREE** hearing tests between 10am and 2pm.
How often should you get your hearing checked?

18 - 45yrs	Every 5yrs
45 - 60 yrs	Every 3yrs
60 + yrs	Every 2yrs

Permanent Doctors



Ochre Health Medical is looking forward to welcoming two permanent doctors to its St Helens practice based at Hub4Health.

Dr Janet Cantley has had several short term positions and is excited to join the team permanently at the end of April.

Dr Molly Shorthouse will take up a permanent position at the start of May. Dr Shorthouse has a particular interest and vast expertise in mental health, and completed a locum in St Helens over the Christmas and New Year period.

She enjoyed the area so much, she is relocating with her husband and young family from the Northern Territory, where she has been working in rural communities.



Podiatry Clinic

St John's Foot Clinic will be visiting St Marys again over the next few months to provide podiatry services to those in the Fingal Valley region.

The first clinic will be on April 4. Virginia from St John's can provide care and advice around all your foot care concerns, including diabetes management.

Appointments fill quickly so please phone Hub4Health on 6376 2971 for information on session times, and to secure your appointment.

MENTAL HEALTH OUTREACH

A service of practical support to assist and connect people in our community.

Phone Bunty on 0429 666 002 or Hub4Health on 6376 2971

DIETITIAN VISITS IN APRIL

Georgia Rossetto from Launceston Dietetics will be back at Hub4Health in St Helens on April 9 and 10.

Appointments are available for anyone needing dietary advice, particularly around weight loss, allergies and gastric issues, including the management of coeliac disease.

Contact us for an appointment on 6376 2971.

Hub4Health Walking Group

Skeleton Bay - Twin Poles: Leaders - Fran and Stewart Taylor

A party of 21 enjoyed a very pleasant coastal walk starting from Skeleton Bay Car park, Binalong Bay. The track was easy with some undulations. We took in the view from Skeleton Point north towards Eddystone Point. We then proceeded on to our destination, Twin Poles (these mark the boundary of a marine reserve), 10 minutes past Grants Point where we had more good views towards Elephant Rock and the entrance to Georges Bay. The walk included a stop at Australia Rock for a photo or two. The bird watchers in the group pointed out Gannets diving for fish, and shy Firetails calling in the bush. Contributors: Fran and Stewart Taylor

Scamander Golf Course to River Walk: Leader - Ted Thornley

What a wonderful day it was. We met in Scamander at the BP service Station and drove to the golf course, leaving the cars near the entrance to a track that skirts the course.

Twenty-two of us then walked along this track to the river, which took about two hours return, and as usual everyone had a great time. There is always so much to see and talk about, apart from the keep fit aspect - it is a truly wonderful opportunity for social contact. There was a large variety of birds, interesting botanical specimens, evidence of prospecting holes and beautiful views of the river. One downside however, which is found on all tracks close to the towns here in north east Tasmania, is the evidence of dumped rubbish and garden waste; this despite being only a couple of hundred metres from the Scamander waste disposal centre! Garden waste is particularly irresponsible because of its propensity to spread weeds throughout the bush. Introduced species are often a serious problem.

Apart from this it was a simple walk with only a couple of steep slopes, but the 4wd track made it easy. There were some good sites used by fishermen and quite a lot of evidence of firewood collection. This walk is always popular because of the variety of interests in a short distance. We returned to the cars about midday, refreshed and looking forward to the next excursion. Contributor: Ted Thornley

New members are most welcome. Please call Hub4Health on 6376 2971 or Bryan Edhouse on 0414 987 435. Come join up soon!

Wayne Fulford, Publicity Officer, H4H Walking Group



Beautiful Skeleton Bay, photo taken by Wayne Fulford

Georg Friedrich Händel's best known work is probably the oratorio, "Messiah", written within a 24-day period, and completed on 14 September 1741. An oratorio is a large musical composition for orchestra, vocal soloists and chorus, telling a sacred story without costumes, scenery, or acting. "Messiah" is the story of the prophecy of the coming Messiah as told in the Old Testament, and the life and death of Jesus, set to texts from the King James Bible. Originally conceived as an Easter oratorio, it has become popular to perform it at Christmas, particularly as it culminates with the powerful "Hallelujah" chorus. During the London premiere of "Messiah" on 23 March 1743, King George II rose to his feet during the Hallelujah chorus and remained standing until its end. Thus began the tradition that still endures today, of the audience standing for the Hallelujah chorus.



Scamander Golf Course to River walk, photo taken by Ted Thornley

Surf Coast Realty

Ph: (03) 6372 5321



Your Independent, Locally Owned & Operated Real Estate Agency!

- ⇒ Extensive market knowledge & personalised, caring service.
- ⇒ Window displays in Scamander, St Marys, St Helens and Bicheno.
- ⇒ Specialised website & mobile website designed to showcase the wonderful East Coast lifestyle.

If you are thinking of buying or selling, please contact Surf Coast Realty for market advice or an Obligation-free appraisal.

Suite 1/ 15B Scamander Ave, Scamander TAS 7215

Honest . Reliable . Professional

Surveying Town Planning Aerial Photography & 3D Modelling

- Property boundary checks and remarks
- House set-outs
- Land development and management
- Strata developments
- Engineering and feature surveys for design
- Construction set-out
- Development investigations and assessments
- Town planning services
- Aerial photography for real estate and other
- Agriculture services such as drainage and dams
- Quantity surveys for stockpiles and quarries
- Machine Control setup, establishment and onsite management
- Mapping and monitoring of sites
- Project feasibility studies
- Aerial and terrestrial 3D modelling
- Near Infra Red (NIR) and Normalised Difference Vegetation Index (NDVI) imagery for vegetation and crop health
- Thermal imagery capture



**EAST COAST
SURVEYING**
PROFESSIONAL SURVEYING
& LAND PLANNERS

Avery House, Level 1
48 Cecilia Street
St Helens TAS 7216
Phone (03) 6376 1972
admin@ecosurv.com.au.

3D

MAPPING SOLUTIONS

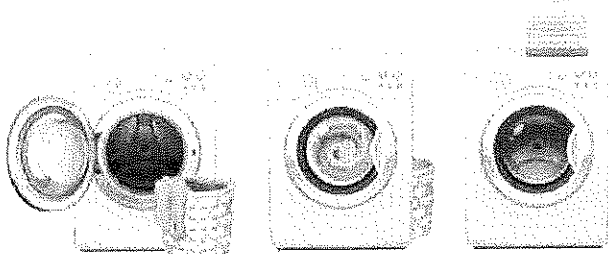
Phone 0458 353 946
admin@3dmappingsolutions.com.au

“The first colonial teenagers rejected their parents’ values, as teenagers have done ever since Cain and Abel decided to get away from all that hippy nature stuff. They were sober, industrious and, if truth be told, not much fun. They laboured uncomplainingly in the sun, exercised in the fresh air, swam in the sea and were, on average, six inches taller than the malnourished British stock from which they had sprung. Within a single generation, the Artful Dodger had transformed into Chesty Bond.”

— David Hunt, *Girt: The Unauthorised History of Australia*

CLEAN CRACK LAUNDROMAT

32 Main Street St Marys



Coin operated washers
and dryers
6.30am - 8pm

St Marys Bakery

Ph: 6372 2131
OPEN 7 DAYS
A WEEK



Fresh bread, rolls &
buns, pies, pasties,
cakes, hot food,
coffee, cold drinks, ice
cream

52 Main Street St Marys

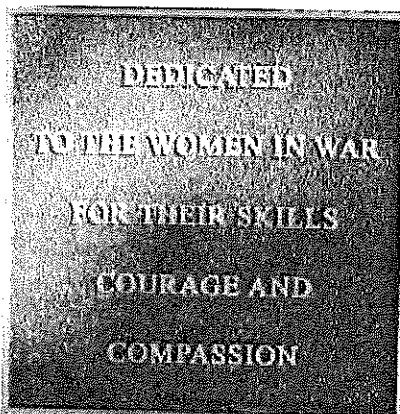
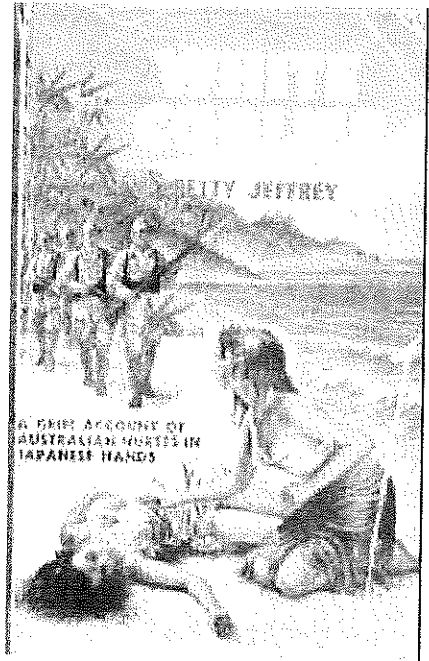
Mt Elephant and Beyond Book Review

Our book for this past month was **White Coolies**, the diary of Betty Jeffrey, an Army nurse based in Malaya with the 8th Division AIF in 1941. Days before the fall of Singapore in February 1942, she and hundreds of other nursing sisters were evacuated by ships that were then bombed by the advancing Japanese forces. Many were killed in the attacks or shot on the beaches, but she and a group of fellow Australian sisters were captured and taken to Sumatra to so-called internment camps. They were joined there by British nursing sisters, Dutch nuns and Dutch women and children civilians. This book is the account she wrote periodically during her 3 1/2 years of imprisonment, and it is now held in the Australian War Memorial in Canberra as a testament of the suffering and bravery of these women.

Today in 2017 it is hard to believe the conditions and treatment that these women had to endure. They were brutally treated by their captors who despised them and they were starved, tortured and humiliated. Red Cross donation packages were withheld, letters from home were given to them years after they were received and they suffered terribly from typhoid, malaria and berri-berri. Despite all of this the tone of her account is often cheerful, always stoic. We wondered whether this was because of the fact that their nursing training had somewhat prepared them for hardship, or whether it was simply the way people had learned to live - not to dwell on the negatives and to maintain the "stiff upper lip". In any case, the ethos of the Army nurse shines through.

The courage and resourcefulness of these sisters in coping with illness, injury, extreme food shortage and overcrowding is amazing. There is no self pity expressed, no dwelling on what might happen to them and discretion on the compromises some made with the Japanese in order to survive.

There are occasional comments on their Japanese captors but focus is on the selflessness of these sisters, and the daily grind of survival under shocking deprivation.



Readers from St Marys will remember the late **Jan Sparkes** (right), who, as a Dutch child living in Indonesia, was taken prisoner with her parents by the Japanese and remembered vividly the bravery and endurance of the women during her time in an internment camp. Before her death, Jan raised funds for and organised the placing of a plaque (left) in the garden in front of the St Marys Town Hall, to honour the contribution and valour of all women in wartime.



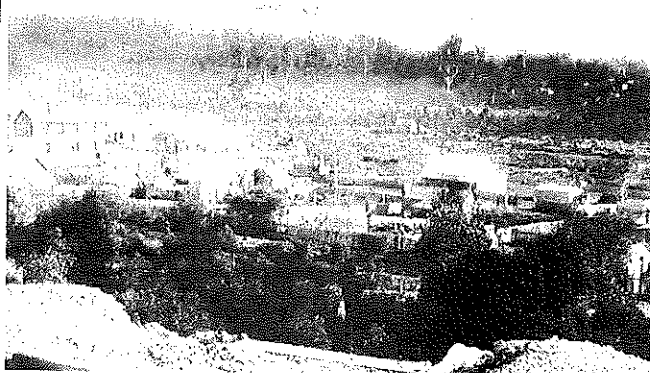
One of the questions this account raises for the reader is how we would cope in similar circumstances. The comradeship, the resilience, the inventiveness and spirit of these sisters remain with the reader long after the account finishes with the eventual repatriation of some of

them. Many died in the camps but Betty Jeffrey went on to lead a life devoted to others and died at 92, despite weighing 30kg upon release and spending the next two years in hospital with TB.

This was unanimously voted to be an inspiring and informative read.

Pam Bretz, St Marys

Tasmania Way Back When - <https://www.facebook.com/tastime/photos/>



Mathinna 1900s



Waterloo Point, Swansea . 1859



OUT OF THE WOODWORK

The Guild is open every day except Friday Saturday and Sunday 10am-4pm (depending on volunteers) and other times by appointment.

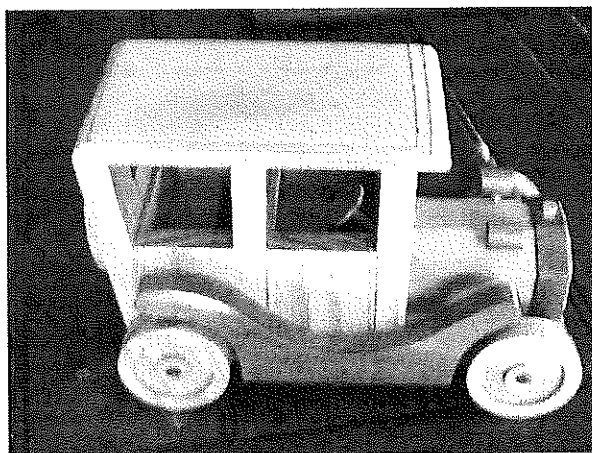
Please keep a lookout for the Woodcraft Guild raffle on the verandah of the St Marys IGA. First ticket drawn has choice of either a garden seat or one of Graham Derbyshire's beautifully hand crafted wooden motor cars; prizes pictured below.

All monies raised are returned to the Guild which supports our organisation in providing a service to our community.

Many thanks to Mark who every year provides the space for us to utilize our fund raising effort. Not to forget the top IGA who approached the sizzler king and gave him the option of selling out front. These kind gestures were very much appreciated by all members.

Don't forget our Open Day Fair 8 April if you would like a stall cost is \$5 per table please call Reon 6372 2094

Photographs and article by Wendy Brennan, Secretary of the Break O'Day Woodcraft Guild Lot 1 Esk Highway, St Marys 6372 2094



Harris Funerals
St Helens, Bicheno & Fingal Valley

*We are here when you need us.
Burial or cremation, traditional or
unique funeral services available.*

Office & Chapel:

46 Tully Street St Helens
6376 1153 ~ 0418 133 420

tamara@harrisfunerals.com.au

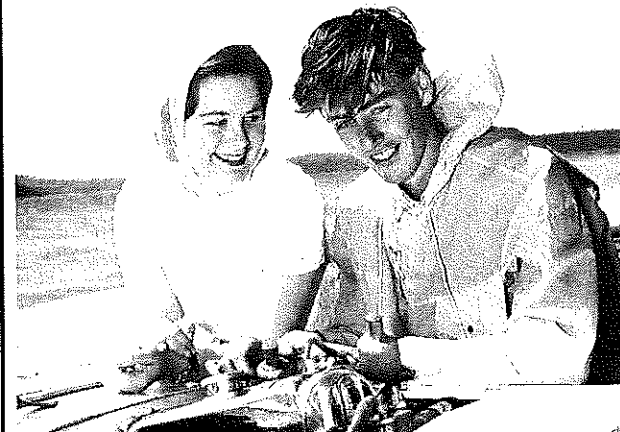
Member of the
Australian Funeral Directors Association



Below are photos reprinted from The Valley and East Coast Voice 44.21 March 22, 2012 article - 'More Need For Speed?'



Bill Targett and Bruce King



Ruth and John McGiveron, taken in 1960.

Rex (Robert) Burr from Humans of Launceston

Sit down big fella and I'll be happy to tell you my story. But you better hurry up, so I can read it because I only have a few weeks left and I'll be gone. And by gone I mean dead, hahaha. I'm sick of being bloody crook. But, I've lived a good life and I'm happy to go.

My mother Edwina got snakebit when I was three months old. She was walking in the bush up at Goshen near Pyengana. I was the youngest of three boys so once mum died, my father had to raise us three boys on his own. So, we moved down to Garden Island in the Huon Valley for a while and dad picked apples for a few seasons. I'll just tell you this before I go on. My mother's maiden name was Burr. And my father's name was Burr. It was just a coincidence. I swear they weren't related, hahaha.

I was born in Scottsdale on the 21st of October, 1935. One of my first memories was catching the tram in Hobart and waking up in my Gran's house in Bryan Street, Invermay, and thinking we'd caught the tram all the way from Hobart, haha talk about laugh. I was just thinking about that as you knocked on my door. It's funny what you remember. I've been reminiscing a lot lately so it's good you're here. I need a chat.

And it'll be good for the littlies in my family to know a bit more about me.

My grandmother was a bit crook when we moved back to Launceston so she could only take on one of us boys. So my eldest brother Wally moved in with her. Dad, Jimmy and me moved into a boarding house. It was still the Depression era so work was very hard to find for most folks.

After a while, Dad decided to move up to Rossarden to work and Gran said "No, you can't take Robert, he is too young to live out there". Jimmy was a really wild kid so Gran couldn't have him. So an old lady named Mrs O'Connor from George Street took me in and Dad paid her thirteen shillings a week to look after me. I was just turned four the week before. I lived with her for the next four years. She was a good old stick from what I remember.

One day, I was almost nine years old by then I think, Mrs O'Connor was standing on a table washing the roof, and she fell off and broke both her kneecaps. Poor love. Whilst she was in hospital, I was looking after myself pretty much. My dad had bought me a bike by then and I was riding down the street and a girl threw a big piece of wood at me whilst I rode past her and it hit me in the hip. I dunno why she did that but I can tell you this, it bloody hurt, hahaha.

My dad Bill (William Burr) was working at Calvert's Sawmill out at Nunamara by then, so I took off to find him. I had no idea how to get there but knew that it was over the hills behind Mowbray so off I went. I stopped at farms on the way and people gave me food and a drink and pointed me in the right direction. Everywhere I stopped I showed them my bruised hip, haha. By dark time I had arrived in Nunamara.

I somehow found the Calverts' house and Mrs Calvert welcomed me, then rang a bloke named Jimmy Pearton to come and get me and take me to Dads' house. She fed me and gave me a bath and that fella took me to Dad's huts. Dad came out to greet us a bit shocked I think and I showed him the bruise on my hip and he hugged me. He was living in two huts on the Calvert's property with my brother Jimmy and he said to me "Robert, you can live in one of these huts and stay with me from now on.

I started going to school in Nunamara and stayed for about four years. I hated school but I loved being with Dad again, so I stuck it out. And Nunamara was a kids paradise. Rabbits and bush and the river. Then Dad got a job fixing the roads up at Camden, up near the Myrtle Park turnoff. They were tiny narrow roads I remember, only wide enough for a horse and cart. I had to ride eight mile to get to school and by the time I got home, I had to cook tea. I had to feed all the fowls too. The youngest always had to cook, that was the rule back then. Our hut was so tiny we all couldn't sit in there at the same time. I suppose life was tough but it's all I knew. And I loved cooking for Dad. And just being with him. I'd missed my family a lot. I hated that snake that killed my mum. I used to dream about finding it and killing it before it got to bite Mum. But anyway...

After I left school at 14, I started hanging out at Gunns Sawmill and would go in the trucks for a drive and give the men a hand. My cousin was driving a D7 dozer and I used to sit in it with him. I'd even drive the loco once it had been loaded with logs. Just two stops and in second gear only. The blokes kept it all hush hush and looked out for me and I loved it. I learnt a hell of a lot that's for sure.



My family. Mum holding me. Dad in the middle. My aunt and uncle and my grandfather on the left. Gran on the right



Our wedding day

Then one day the boss called me in and had a chat with me and I thought 'Hello, I'm in strife here', but he gave me a cheque for nine pounds. I asked him why and he winked at me and said it was for all the work I had done over the last year. He then said you need to come work for us after Christmas. So I did. I worked at several different Gunns sites over the next few years and I learnt a great deal about the forestry industry and how to work hard.

There was a family with four daughters who lived up the road from me when I lived in George Street with Mrs O'Connor and when I got older, I was sweet on the eldest sister Mary. Dunno why, 'cos she was the one who threw the piece of wood at me, haha. I was working at the Gunns Paper mill up at Boardmills in Killifaddy Road and one night, I had to give one of Marys' younger sisters a lift home.

Her name was Patricia and she was almost the same age as me, and before I dropped her at home she asked me to kiss her. So I did. Nine kids we had after that, so it was a pretty powerful kiss *laughs*. Six girls and three boys; Cheryl, Robert, Michael, Leanne, Peter, Lynette, Trish, Tanya and Chris. We married soon after and it was time to get a new job. Pat's father had died years earlier after he had a heart attack while painting up on a roof. He was dead before he hit the ground. Poor buggler.

Her mum got married again to a Polish man and he told me he knew of a job going at a farm. I went and had an interview with a farmer named Mr Norman Gatenby, whose farm was Cressy Station halfway between Longford and Cressy. I told him "Mr Gatenby, I am green. I have hardly any farming experience with stock and ploughing but I am well known as a loyal and hard worker". He looked me straight in the eye, shook my hand said to come back in a few weeks and I'll give you a job and a farm house to live in. Just give the house a lick of paint and it'll be fine. I knew it was all going to work out just fine.



My family

My first job on the farm was driving a tractor with a binder on the back, binding hay for feed. The farm also had a milkman, a gardener, three farmhands, an odd jobs man and two jackaroos. I was earning 75 pounds a month and life was good. Every March we would get a bonus, I was told. Well, by then I was working very hard. Mr Gatenby gave me a bonus of 500 pounds. I was shocked. It was the most money I had ever had.

Another time he went up to our house and Pat was in a tither 'cos our washing machine had blown up. Mr Gatenby had a look at it and realised it was stuffed. And do you know what he did? He went and bought us a brand spanking new one. No charge to us. Such a lovely man he was.

I stayed there for twelve years at Cressy Station. The house we lived in is long gone, replaced by the Longford Golf Course.

My beloved wife Pat died about five years ago. She had a brain tumour the poor thing. When we married, they said we would last six months. Fifty-eight years we were married. So that showed them *laughs*. She had a great personality and we got along real well.

She was a great mum to our children and held the fort as I worked a lot. Probably too much really.

I have 12 grandchildren and 18 great grandchildren. I love 'em all. If there is anything I'd like to tell them about what I have learnt in life, it's just work hard, don't hurt anyone and be happy.

Life in Launceston has been good to me and I have enjoyed living in this home. They look after ya pretty good. I've got my budgie George to keep me company but I've had enough of the sickness. I'm tired and sick of fighting. It's not easy getting old. But I'm glad you are going to put my life story out there. That means a lot to me. I miss my Pat every day but you know, it's been a good life.

Please share Rex's post as he was quite keen to "go viral" before he dies. <https://www.facebook.com/humansoflaunceston/posts/340188393049323>



Wally, Jimmy and me

My mum got married again to a Polish man and he told me he knew of a job going at a farm. I went and had an interview with a farmer named Mr Norman Gatenby, whose farm was Cressy Station halfway between Longford and Cressy. I told him "Mr Gatenby, I am green. I have hardly any farming experience with stock and ploughing but I am well known as a loyal and hard worker". He looked me straight in the eye, shook my hand said to come back in a few weeks and I'll give you a job and a farm house to live in. Just give the house a lick of paint and it'll be fine. I knew it was all going to work out just fine.

My first job on the farm was driving a tractor with a binder on the back, binding hay for feed. The farm also had a milkman, a gardener, three farmhands, an odd jobs man and two



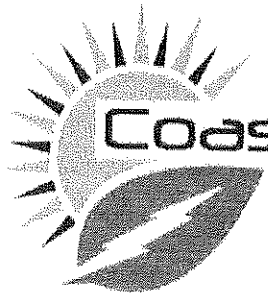
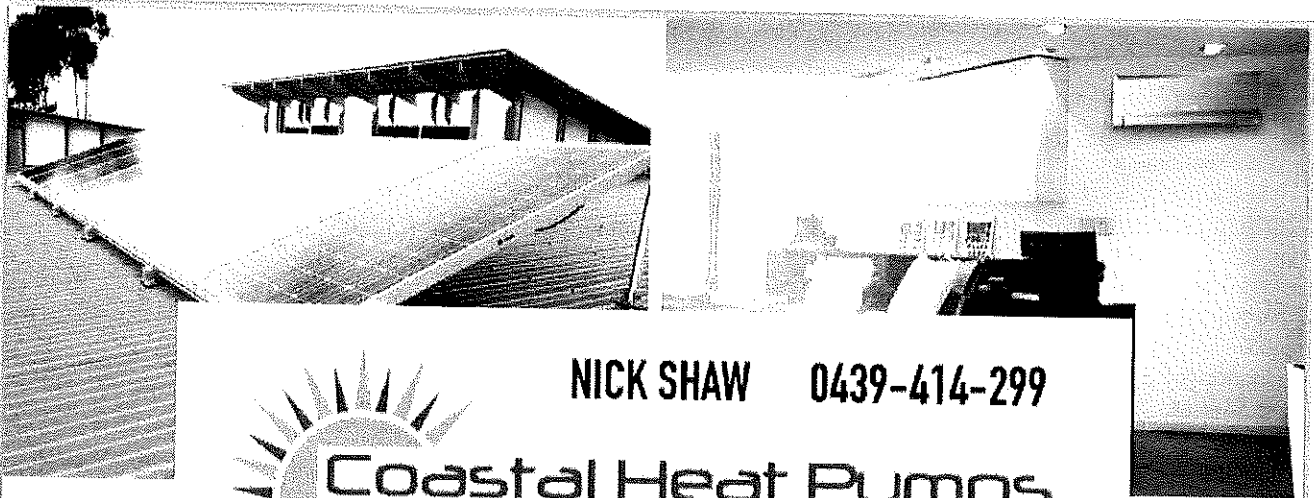
CALTEX ST MARYS

**MECHANICAL REPAIRS
& SERVICE**

41 Main Street

6372 2335 / 0419 503 109

Fax 6372 2822



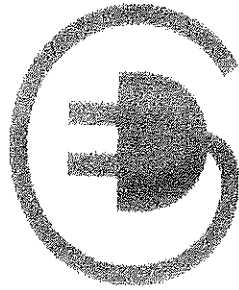
NICK SHAW 0439-414-299

Coastal Heat Pumps & Solar

Lic no. L076081
Lic no. A4155228

Specialising in both Domestic and Commercial projects
Tax deductible for business
Tier 1 supplier, for the best quality solar systems
1 kW - 100 kW systems available
Call us today for a **FREE SOLAR QUOTE**
Already have a quote?
WE'LL BEAT IT BY 5%

Install one of our leading brands of
Heat Pumps today and stay **WARM** this **WINTER**
while still staying **COOL** in **SUMMER**.
-Floor mounted-
-Wall mounted-
-Fully Ducted systems
-up to 18kW



St. Helens Electrical

Domestic, Commercial, Industrial
New houses, wiring and repairs
Underground mains supply

Lighting Specialist
Interior and Exterior
Advice, sales, and installation

Heat Pump/Heater Installations
Supply and install all brands
Floor, Wall, Ducted
Advice on all home heating

Solar Installation
Domestic and business
1kW to 100kW

Call for a free quote

Rod Shaw 0407-615-072

Nick Shaw 0439-414-299

24798 Tasman Highway
St. Helens, Tas. 7216

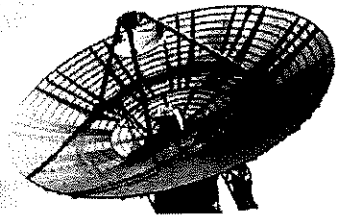
Email:
sth.electrical@gmail.com



Coastal Heat Pumps
& Solar

Electrical Contractors
Servicing the East Coast from Pyengana down Coles Bay
and through the Fingal Valley
Lic: 933671

365
T O M O R R O W S



Father's Day

Author D J Rozell, March 12, 2017

Agent Jackson sat down across the table from the bio-hacker and started in before the guy had a chance to size him up. "We're not here to collect evidence – we've got plenty of that – but to discuss motives. Clearly you are a genius." The agent was priming the pump. "So, why use your considerable talents for this?"

"Well, as the media correctly surmised, my little experiment had a social agenda. I decided to give the world a nudge in the right direction."

"That was some nudge," Agent Jackson remained polite despite the annoying false modesty.

"True, my expectations have been exceeded."

"How so?"

"Well, as you know, the virus copies the genetic material of an infected male to a subsequent infected male's sperm, but only those with Y chromosomes. The result is male offspring with random paternal genetic origin, but female offspring that still bear the original parents' genes. This manages to preserve both the traditional mate selection process and the basis for families, while at the same time elevating the status of females in society. I'm pleased to see that nobody prefers male children anymore."

"Except for families in isolationist compounds and the wealthy who can afford sorted invitro fertilization."

"One virus can't fix every problem..."

"Yeah, back to the main point. Did you actually think you could end sexism with a viral infection?"

"End, no. Greatly diminish, yes." The bio-hacker was getting more animated. "The current generation of children already accepts the new paradigm. Unless a vaccine is developed soon, motivation to return to the old ways will quickly fade."

"What about men with genetic diseases who were ostracized or worse?"

The bio-hacker inspected the table. "Every technology has unintended consequences."

"Unintended consequences?" said the speaker in the wall. Agent Williams was standing on the other side of the mirrored glass. His marriage had been part of the early collateral damage of the virus before scientists realized what was happening.

Agent Jackson segued, "Yes, one unintended consequence has been for our profession. Violence has emptied some countries of bioengineers, while others are stockpiling them like weapons. So, the real reason we have you here is to offer you a job."

"Why?" The bio-hacker was faking surprise.

"Reformed bio-hackers are the best security specialists."

"What if I say no?" Now he was trying to bargain.

"We go public with your identity. Long trial. Life in prison." There was a long pause. "OK, I'm in."

"Good. The official story will be that the virus was created by a scientist who died three years ago. Case closed. Meanwhile, you create a treatment and vaccine." The bio-hacker's eyes narrowed.

"Consider it the appropriate conclusion of your 'experiment.' A good scientist always cleans up when done. Right?"

The bio-hacker brightened and leaned in, "Actually, now that we're colleagues, I think you'll be more interested in what I've been working on since the first release. It's a benign bacterium that will end religious conflict."

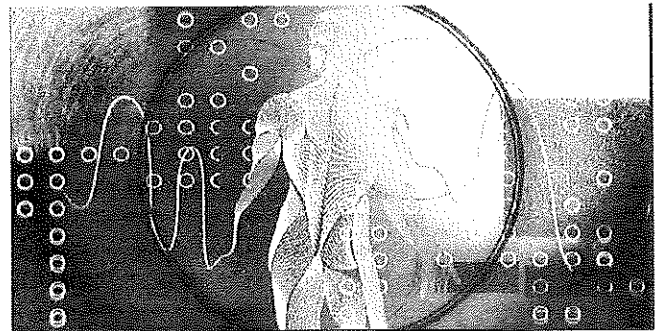
"Very interesting. Excuse me for a moment."

Agent Jackson and Williams had a brief discussion and then sent the bio-hacker home with a handshake and some paperwork to complete. Agent Williams made a phone call.

Later that evening, the bio-hacker would be abducted by an isolationists group in black ninja-like bio-hazard suits.

Agent Williams said it was apropos – vigilante justice for vigilante science. Meanwhile, Agent Jackson erased all records of the day.

Then, both agents went home to enjoy their Father's Day weekend.



DON'T LET A BAD HAIR DAY

STOP YOU FROM COMING TO THE WOODCRAFT GUILD OPEN DAY FAIR

8th April 10am - 2pm

OLD RAILWAY GOODS SHED ESK HIGHWAY ST MARYS

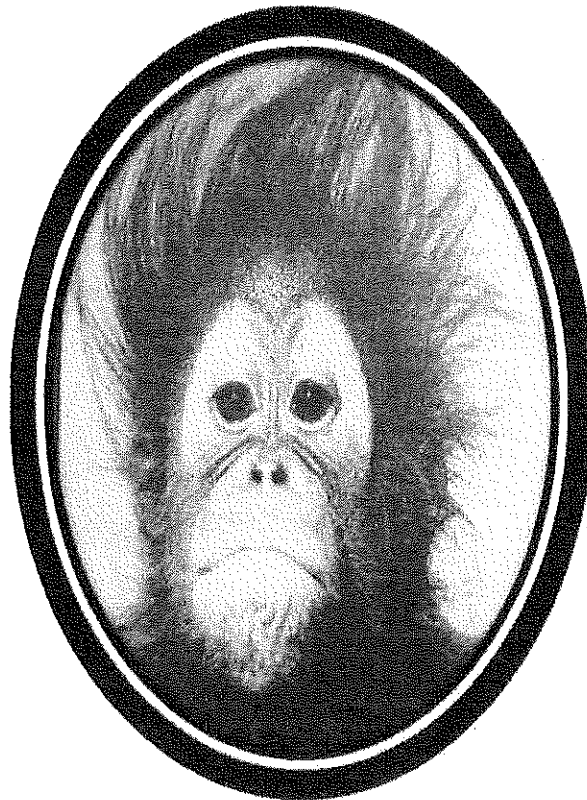
JUMPING CASTLE

GO KART DISPLAY

REPTILE RESCUE

FACE PAINTING

FOOD STALLS



OLD MACHINERY CLUB

EAST COAST RC

FLYERS



LOCAL MUSICIANS 4X2'S

THE COLONIAL STROLLERS

MARKETS

CRAFT DISPLAY

WE SUPPORT MEN'S HEALTH

FOR FURTHER INFORMATION RING REON 6372 2094

ACROSS

- 1. Meddle
- 6. Largest continent
- 10. Was cognizant
- 14. Nigerian monetary unit
- 15. An indistinct shapeless form
- 16. Exploded star
- 17. Lazybones
- 18. Mend (archaic)
- 19. Egg-shaped
- 20. Corridor
- 22. Formally surrender
- 23. Alcove
- 24. Foot joint
- 26. Envelop
- 30. Devilfish
- 32. Two-door car
- 33. The skin of a traditional canoe
- 37. Astrological transition point
- 38. Compel
- 39. Double-reed woodwind
- 40. Stimulates
- 42. Soft leather
- 43. European currency
- 44. Make plump
- 45. "Beau ____"
- 47. A parcel of land
- 48. "Oh my!"
- 49. Cures bacterial infections
- 56. Wise men
- 57. Harvest
- 58. Tint
- 59. Chocolate cookie
- 60. French Sudan
- 61. Satiates
- 62. Composer Jerome
- 63. Hurried
- 64. Pairs of oxen

1	2	3	4	5		6	7	8	9		10	11	12	13	
14						15					16				
17						18					19				
20					21						22				
				23				24	25						
26	27	28	29				30	31							
32						33						34	35	36	
37					38						39				
40				41						42					
			43						44						
	45	46						47							
48						49	50	51				52	53	54	55
56						57					58				
59						60					61				
62						63					64				

DOWN

- 1. Trim
- 21. Wander aimlessly
- 41. Destroy the inside of
- 2. Zero
- 25. Greatest possible
- 42. Gratify
- 3. Anagram of "Silo"
- 26. Behold, in old Rome
- 44. Watch chain
- 4. Mining finds
- 27. Person, place or thing
- 45. Menacing look
- 5. A short moral story
- 28. Circuit breaker
- 46. Keen
- 6. Monastery
- 29. Subjugation
- 47. Fat
- 7. Killed
- 30. Bogs down
- 48. Out of control
- 8. Greek letter
- 31. Circle fragments
- 50. Half-moon tide
- 9. Temporary cessation
- 33. Clown
- 51. Story
- 10. Boisterous
- 34. Assist in crime
- 52. Buckeye State
- 11. Book of fiction
- 35. Was a passenger
- 53. Chat
- 12. Avoid
- 36. Avid
- 54. Doing nothing
- 13. Welt
- 38. Guns
- 55. To tax or access

Solution on p27

Libraries (Closed public holidays)

61 Cecilia Street **St Helens**
6387 5530
Mon, Tue, Wed, Thurs
10am - 1pm, 2 - 5pm
Fri 10am - 1pm, 2 - 6pm
Sat 10am - 12pm

31 Main Street **St Marys**
6372 2114
Monday, Wednesday &
Friday 12.30 - 4pm
Tuesday & Thursday
10am - 12.45pm

Fingal Online Access Centre
29 Talbot Street 6374 2222
Monday, Wednesday &
Friday 9am - 4pm
Tuesday & Thursday 9am -
12pm



St Marys Community Health Centre
Gardiners Creek Rd St Marys Tasmania 7215
6387 5555

GP Surgery Hours

Monday - Friday

8.50 - 10am

(10 - 10.30am reception closed)

10.30am - 12.30pm

(12.30 - 1.30pm reception closed)

1.30 - 2.45pm

(2.45 - 3.15pm Reception closed)

3.15 - 4.30pm

Pathology Service – Bloods

There is no pathology service prior to 8.30am.

If you require pathology prior to 8.30am i.e. urgent blood test and / or a fasting test, an appointment must be made at the Nurses' Station the day / evening before on 6387 5555

Pathology hours are 8.30 - 11am and 2 - 4pm, Monday-Friday

Scripts and Doctors Appointments

Please ensure doctors appointments are booked **PRIOR** to your medications running out, or **IN ADVANCE** if you attend this practice regularly.

Please be patient Waiting periods to see your doctor may be experienced. We are not able to issue scripts during the weekends, please ensure you have enough in advance.

Please be aware we are not able to issue scripts by phone

A.H. contact numbers

GP Assist 1300 780 011

Ambulance or
Emergency 1800 008 008
000

Lifeline - Saving lives, crisis
support and suicide prevention 131 114

St Marys Community Health
Centre - please ring before
presenting after hours 6387 5555

**Non attendance of
Doctor's appointments**

Please be aware there is a non attendance policy at this practice. If you miss three appointments you will be sent an account. If you miss a fourth appointment you may be referred to another Medical Practice.

Due to demand doctor's appointments need to be booked at least **two weeks in advance**. Waiting periods can apply.

Doctors' Roster

Dr C Latt

23/3/17 – 7/4/17

Dr K Nash-Rawnsley

24/3, 28/3, 31/3, 4/4 & 7/4 2017

Waiting area at the Health Centre

The waiting area for **ALL** services at the St Marys Community Health Centre is in the reception area.

Please report to reception upon arrival and the consultant you are here to see will be told and they will come and collect you from this area.

St Marys Medical Practice reminder

Dr Latt wished to remind the community of the following exceptions to bulk billing at the SMCHC:

Driving licence renewals	Insurance medicals
Requested medical reports	Harness medicals
	Pre-employment checks

These are **NOT** covered by Medicare, and may incur costs. Please discuss this with reception when booking. If you have any concerns, please contact us and we will try and address them

SMCHC Teaching Site

We are a UTAS teaching site. We regularly host students from various health faculties, who attend our site to participate in training placement.

If you are attending this practice and would prefer the students do not sit in on your consultation, please inform reception prior to your appointment. These placements are very important for the students, so your cooperation is greatly appreciated.

INR tests require a 5 minute doctors' consultation.
Please inform reception when booking

ARE YOUR DETAILS UP TO DATE?

Do you have a new address / phone number?

Do you have a new Centrelink / Medicare card?

Have you updated these details with us?

You may also be charged for some medical services if your Centrelink / Medicare cards are not current

If **any** of your details have changed, please contact us on 6387 5555 or call in and see our friendly reception staff for assistance

St Marys Community Health Centre
Gardiners Creek Rd St Marys Tasmania 7215
6387 5555

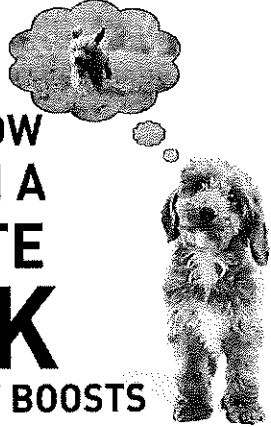
- March 23 **Social Worker** Shan Williams
Ph 6387 5555 for appts
2nd Bite Delivery Bags are ready for collection at 2:30pm from Reception
- March 24 **Social Worker** Shan Williams
Ph 6387 5555 for appts
Physiotherapist Naomi Ide please see your GP or health professional for a referral
Dietician Diabetes Tasmania Melanie Hortle please see your GP for a referral
- March 27 **Physiotherapist** Naomi Ide please see your GP or health professional for a referral
- March 28 **Max Employment** 8:30am-5pm downstairs.
Rae & Partners Lawyers consult fortnightly at the SMCHC. Ph 6337 5555 for appointments.
Occupational Therapist Danyelle Briggs by referral from your Health Professional.
Child Health Session with Mary Mumford Tuesday fortnights, by appt only. Ph 0428 136 381
Physiotherapist Naomi Ide please see your GP or health professional for a referral
- March 29 **Day Centre** Ph Hayley Gilbert on 6387 5555 for information on the group
- March 30 **2nd Bite Delivery** Bags are ready for collection at 2:30pm from Reception
Eyelines- For appts please ph 1300 139 363.
All consultations are Bulk Billed to Medicare.
Social Worker Shan Williams
Ph 6387 5555 for appts
- March 31 **Physiotherapist** Naomi Ide please see your GP or health professional for a referral
Social Worker Shan Williams
Ph 6387 5555 for appts
- April 3 **Physiotherapist** Naomi Ide please see your GP or health professional for a referral
Hospital Auxiliary Meeting 2pm in the Family Room
- April 4 **Physiotherapist** Naomi Ide please see your GP or health professional for a referral
- April 5 **Social Worker** Shan Williams
Ph 6387 5555 for appts
Day Centre Ph Hayley Gilbert on 6387 5555 for information on the group
Consumer & Carer Advocacy Group 12 -2pm downstairs at the SMCHC.
Call Shan on 6387 5555
- April 6 **Social Worker** Shan Williams
Ph 6387 5555 for appts
Adult Community Mental Health Worker
1 - 3pm

- April 7 **Social Worker** Shan Williams
Ph 6387 5555 for appts
Physiotherapist Naomi Ide please see your GP or health professional for a referral

*Preceding information on this page supplied by
St Marys Community Health Centre, Gardiners Creek Rd
St Marys Tasmania 7215*

**WALK YOURSELF
OUT OF YOUR
BAD MOOD.**

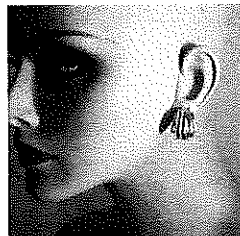
**STUDIES SHOW
THAT EVEN A
10 MINUTE
WALK
IMMEDIATELY BOOSTS
BRAIN CHEMISTRY
TO INCREASE HAPPINESS.**



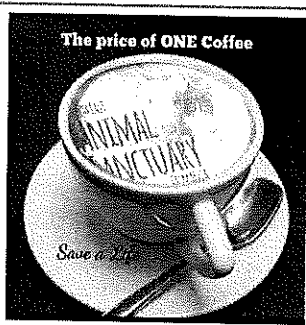
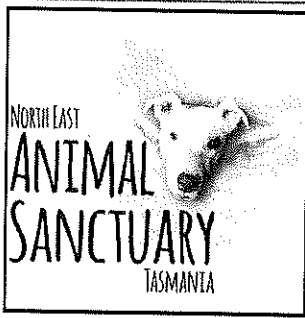
St Marys
PHARMACY

Main Street St Marys
Ph 6372 2844
Kodak prints from 45¢

Ear piercing \$27
includes earrings
and solution
with qualified staff
Bec, Sally and
Cassie



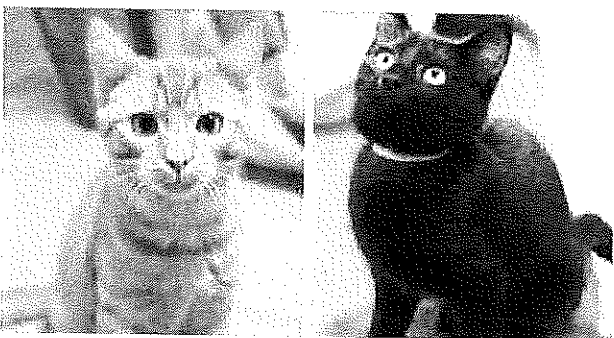
Pharmacist instore Monday to Friday



Some of our most recent adoptions, bringing us up to a grand total of 54 adoptions!!
 41 from last year
 13 so far this year (since February 1.)



Phone Michelle for information on our next adoption day on Saturday April 22 in St Helens. We still have 22 little souls and 3 bigger ones looking for homes So come along and find your purrfect match!!



ADOPT, DON'T SHOP

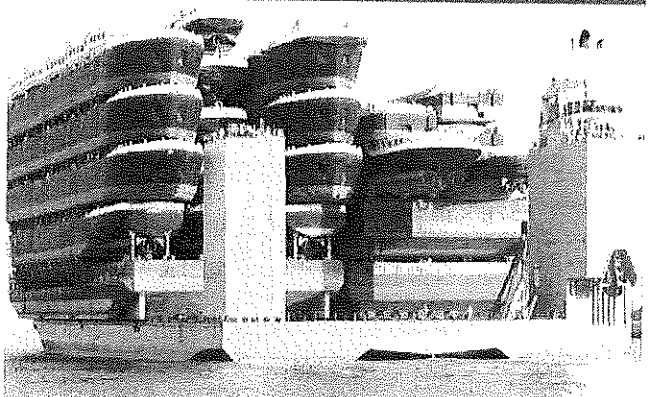
0457 081 533

michelle.jesson@bigpond.com

Meals on Wheels 0488 384 344

March 23	Valmai Spencer
24	Drew Adam
27	Karl Balzer
28	Lundy Vosper
29	Valmai Spencer
30	Judy Duckett
31	Drew Adam
April 3	Ruth Aulich
4	Louise Keady
5	Valmai Spencer
6	Heather Griffiths
7	Drew Adam
10	Karl Balzer
11	Valmai Spencer
12	Lundy Vosper
13	Pam Bretz
14	Drew Adam
17	Ruth Aulich
18	Valmai Spencer
19	Karl Balzer
20	Heather Griffiths
21	Drew Adam
24	Ruth Aulich
25	Valmai Spencer
26	Louise Keady
27	Judy Duckett
28	Drew Adam

This is a ship-shipping ship, shipping shipping ships.

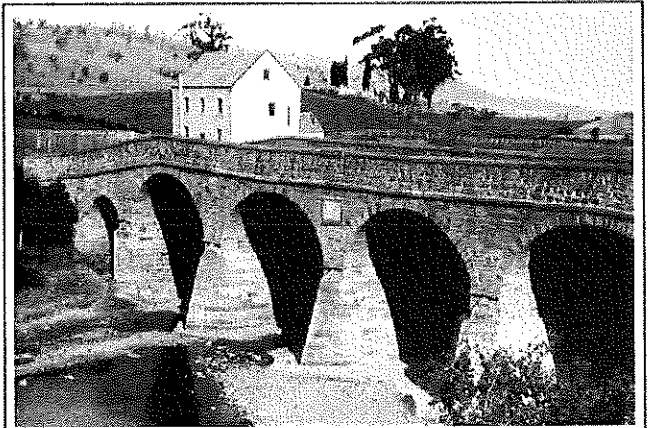


284 words of three letters or more were found in ANATIDAEPHOBIA

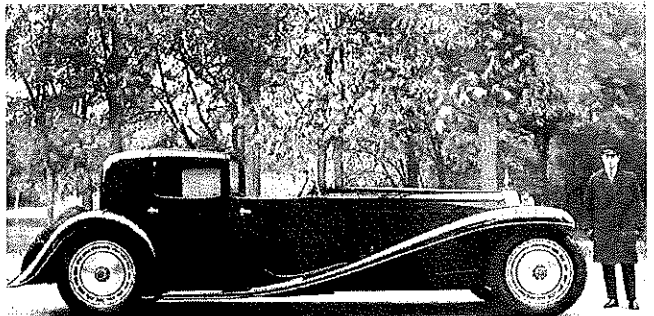


aah	bed	end	nip	
aahed	bedpan	eon	nit	
abate	behind	eta	nob	
abated	bend	habit	nod	
abet	bent	had	node	pine
abide	bet	hand	nope	pined
abode	beta	hap	not	pinhead
adapt	beth	hat	note	pint
adaption	bid	hatband	noted	pinto
adept	bide	hate	notepad	pit
ado	bidet	hated	oat	pita
adobe	bin	hatpin	oath	pith
adopt	bind	head	obtain	pithead
aha	biota	headon	obtained	pitied
ahead	biotin	headpin	ode	piton
aid	biped	heap	one	pod
aide	bipod	heat	open	poet
anatida-	bit	hen	opiate	point
ephobia	bite	hepatoid	opiated	pointed
and	boa	het	opine	pond
anode	boat	hid	opined	pot
anotia	boated	hide	opt	pothead
ant	bode	hind	opted	tab
ante	bond	hint	pad	tabid
antipode	bone	hinted	paean	tad
ape	boned	hip	paid	tahini
aped	bop	hipbone	pain	tan
aphanite	both	hit	pained	tap
aphid	dab	hoe	paint	tape
aphonia	data	hoed	painted	taped
apnea	date	hone	pan	tea
apt	dean	honed	panda	ten
ate	death	hop	pane	tend
atone	debit	hope	paned	tepid
atoned	debt	hoped	pant	than
atonia	den	hot	panted	the
atop	dent	hotbed	pat	then
baa	depot	ide	pate	thin
baaed	depth	idea	path	thine
bad	detain	ideation	patina	tibia
bade	dhoti	idiot	patio	tibiae
baht	die	indepth	pea	tide
bait	diet	indite	peat	tie
baited	din	inept	pedant	tied
ban	dine	inhabit	pen	tin
band	dione	inhabited	pend	tine
bandit	dip	into	pent	tinea
bane	doe	iodine	peon	tined
baned	don	ion	pet	tip
bat	donate	iota	phi	tipi
bated	done	nab	phobia	toad
bath	dope	naiad	phone	toe
bathe	dot	nap	phoned	toed
bathed	dote	nape	piano	ton
baton	doth	neap	pie	tone
bead	eat	neat	pie	toned
bean	edit	net	pieta	top
beat	edition	nib	pin	

How many words of three letters or more can be found in QUINCEANERA?
Answer in 49.22



Can you see the ghost of George Grover in this 1890s photograph of Richmond Bridge?
Supplied: University of Tasmania



Bugatti Type 41 Royale In 1928 Ettore Bugatti asserted that "this year King Alfonso of Spain will receive his Royale", but the Spanish king was deposed without taking delivery, and the first of the cars to find a customer was not delivered until 1932. The Royale, with a basic chassis price of \$30,000, was launched just as the world economy began to deteriorate into the 1930s Great Depression. Six Royales were built between 1929 and 1933, with just three sold to external customers. Intended for royalty, none were eventually sold to any royals, and Bugatti even refused to sell one to King Zog of Albania, claiming that "the man's table manners are beyond belief!" All six production Royales still exist, the prototype was destroyed in an accident in 1931, and each has a different body, some having been rebodied several times.

S	N	O	O	P		A	S	I	A		K	N	E	W
N	A	I	R	A		B	L	O	B		N	O	V	A
I	D	L	E	R		B	E	T	E		O	V	A	L
P	A	S	S	A	G	E	W	A	Y		C	E	D	E
					B	A	Y			A	N	K	L	E
E	N	F	O	L	D		M	A	N	T	A			
C	O	U	P	E		B	I	R	C	H	B	A	R	K
C	U	S	P			F	O	R	C	E		O	B	O
E	N	E	R	G	I	Z	E	S			S	U	E	D
					E	U	R	O	S		F	A	T	T
					G	E	S	T	E		L	O	T	
A	L	A	S			A	N	T	I	B	I	O	T	I
M	A	G	I			R	E	A	P		S	H	A	D
O	R	E	O			M	A	L	I		F	I	L	L
K	E	R	N			S	P	E	D		Y	O	K	E



St Marys IGA Supermarket

38 Main Street Ph 6372 2240 Butcher instore weekdays 8am - 2.30pm 6372 2274
 Monday - Friday 8am - 6.30pm Saturday 8am - 5pm Sunday 10am - 5pm

Butchery specials March 22 - 28

	p/kg
Corned Silverside	8.99
Gerello Roast	11.99
Lamb BBQ Chops	12.99
Nichols Chicken Breast Fillets	9.99
Ingham Chicken Drumsticks	3.99

Butchery specials March 29 - April 4

	p/kg
Rump Steak	19.99
Leg of Lamb	10.99
Smoked Bacon Bones/Hocks	8.55
Nichols Salt & Pepper Tenders	12.99
Ingham Chicken Cuts	3.49

Two week specials March 22 - April 4

Peters Ice Cream 2L	2.79 save 2.00	Palmolive Naturals Shower Gel 500ml	2.99 save 3.50
Nannas Snack Apple Pies 4pk	1.99 save 2.01	Golden Circle Cordial Syrup 2L	2.99 save 1.36
Bega Super Cheese Slices 250g	1.99 save 2.00	Trix Dish Washing Liquid 1L	1.49 save 1.50
Coon Tasty Cheese Block 1kg	7.99 save 1.91	Maggi Cup Noodles 58 - 65g	.89 save .91
Pedigree Canned Dog Food 1.2kg	2.69 save 1.00	Kleenex Viva Paper Towel 2pk	2.49 save 1.01
Cold Power Laundry Powder 900g/Liquid 1L	4.99 save 5.01	Herbal Essences Shampoo / Conditioner 300ml	2.75 save 2.75
Safe Toilet Tissue 12pk	4.99 save 6.00	Doritos Corn Chips 150 - 170g	1.64 save 1.65
John West Tuna Tempters 95g	.99 save 1.01	Nanda Pasta Range 500g	.87 save .88
Mars Range Fun Size Bags 144 - 216g	2.29 save 2.30	Coca Cola Range 10pk	5.99 save 6.31
Peats Ridge Water 600mlx24pk	7.99 save 8.00	Nestle Milo 1.25kg	13.99 save 4.40

St Marys Sports Centre

Gray Road St Marys

Bar open Thursday 6 - 8pm Friday 6pm until close
 Saturday 2pm onwards - warm fire, cheap prices
 Sunday 1.30 - 4.30pm Friday Happy Hour 6.30 - 7.30pm with Pick the Pen, raffles and bar snacks

Golf news: Swish and Fish on Friday April 14, 3 person Ambrose with a meal of fish, chips and salad. Starts 1pm for 1.30pm, price \$15. Visitors and non-members to sign into Centre. After 3 sign-ins it is \$30 for a Social Membership. Thank You!

As you are aware, we are a Sports Centre and not a hotel, and we have to comply with new laws. Thank you again for your cooperation.

Licensee / treasurer *Jim Turner 6372 2441*
 Interim secretary *Glenn McDonald 6372 2429*
 President *Jacqui Bianchi 0439 978 156*
 Vice President *Tamatha Grose 0427 332 085*
 e:stmaryssportsctr@internode.on.net
<https://www.facebook.com/stmarysportscentreinc/>

Bowls news: On Saturday March 18 St Marys def Bicheno at home, and Swansea def Scamander. On Sunday March 19 St Marys hosted the first of the finals between Swansea and Scamander, which Swansea won. Saturday March 25, the **Grand Final** will be played at St Marys - St Marys v's Swansea. Spectators are invited to attend and food will be available at a minimal price.

The Valley and East Coast Voice Inc.
 is available at the following outlets:

Avoca Post Office	Holder Bros Fingal
Coach House Restaurant	Mathinna Post Office
St Marys	Scamander S/market
The Farm Shed, Bicheno	St Marys IGA
Hilly's IGA St Helens	St Marys Newsagency
Hilly's IGA St Marys	

Shower Thoughts:

The scientific field with the most groundbreaking discoveries is geology.

Printed and published by
 The Valley and East Coast
 Voice Inc.
 POB 230
 St Marys Tasmania 7215.

